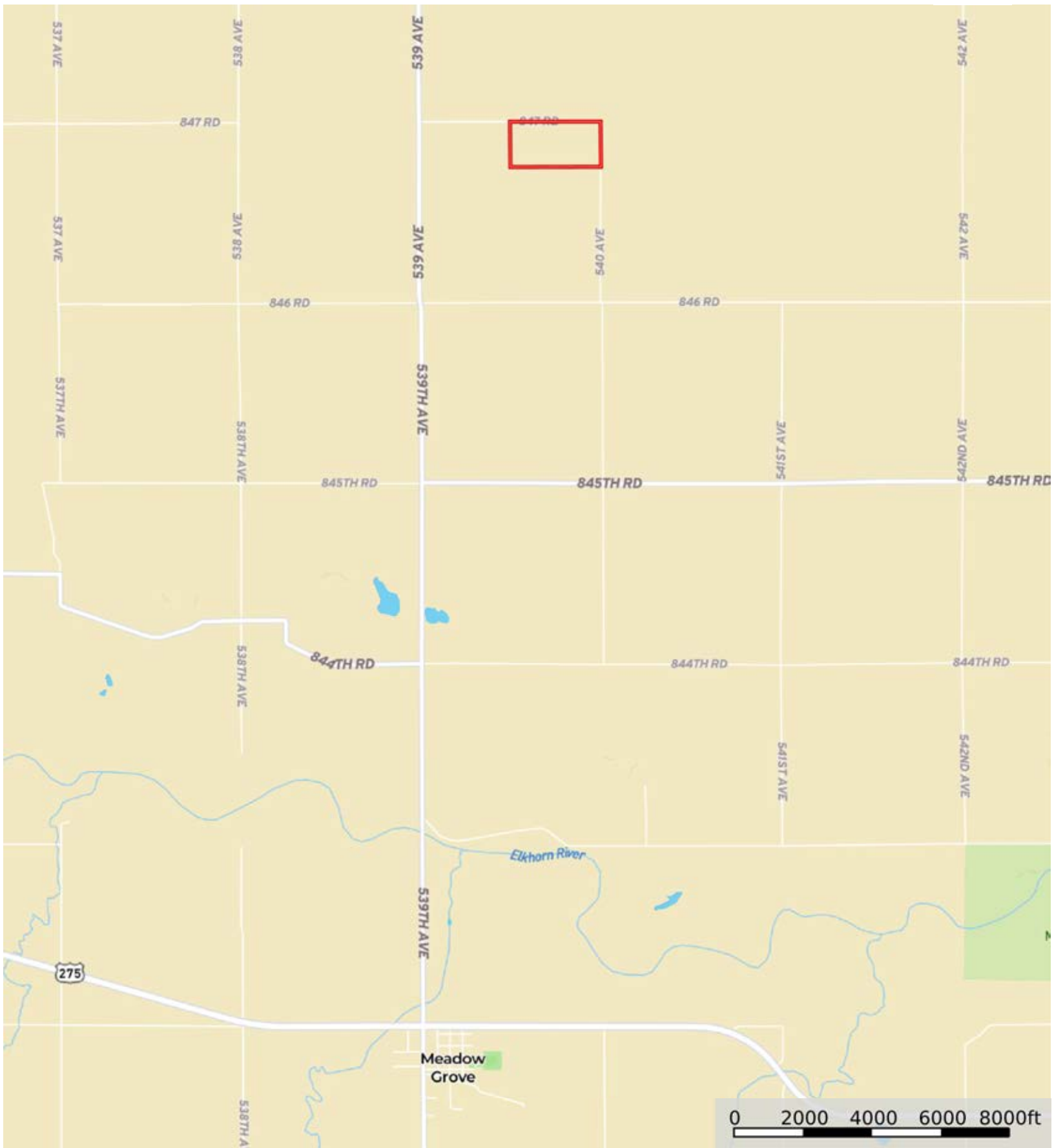



L-2300195

Pierce County, Nebraska, 80 AC +/-



 Boundary



The information contained herein was obtained from sources deemed to be reliable. MapRight Services makes no warranties or guarantees as to the completeness or accuracy thereof.

L-2300195

Pierce County, Nebraska, 80 AC +/-



 Boundary



The information contained herein was obtained from sources deemed to be reliable. MapRight Services makes no warranties or guarantees as to the completeness or accuracy thereof.

L-2300195

Pierce County, Nebraska, 80 AC +/-



Boundary



The information contained herein was obtained from sources deemed to be reliable. MapRight Services makes no warranties or guarantees as to the completeness or accuracy thereof.

|  Boundary 79.85 ac

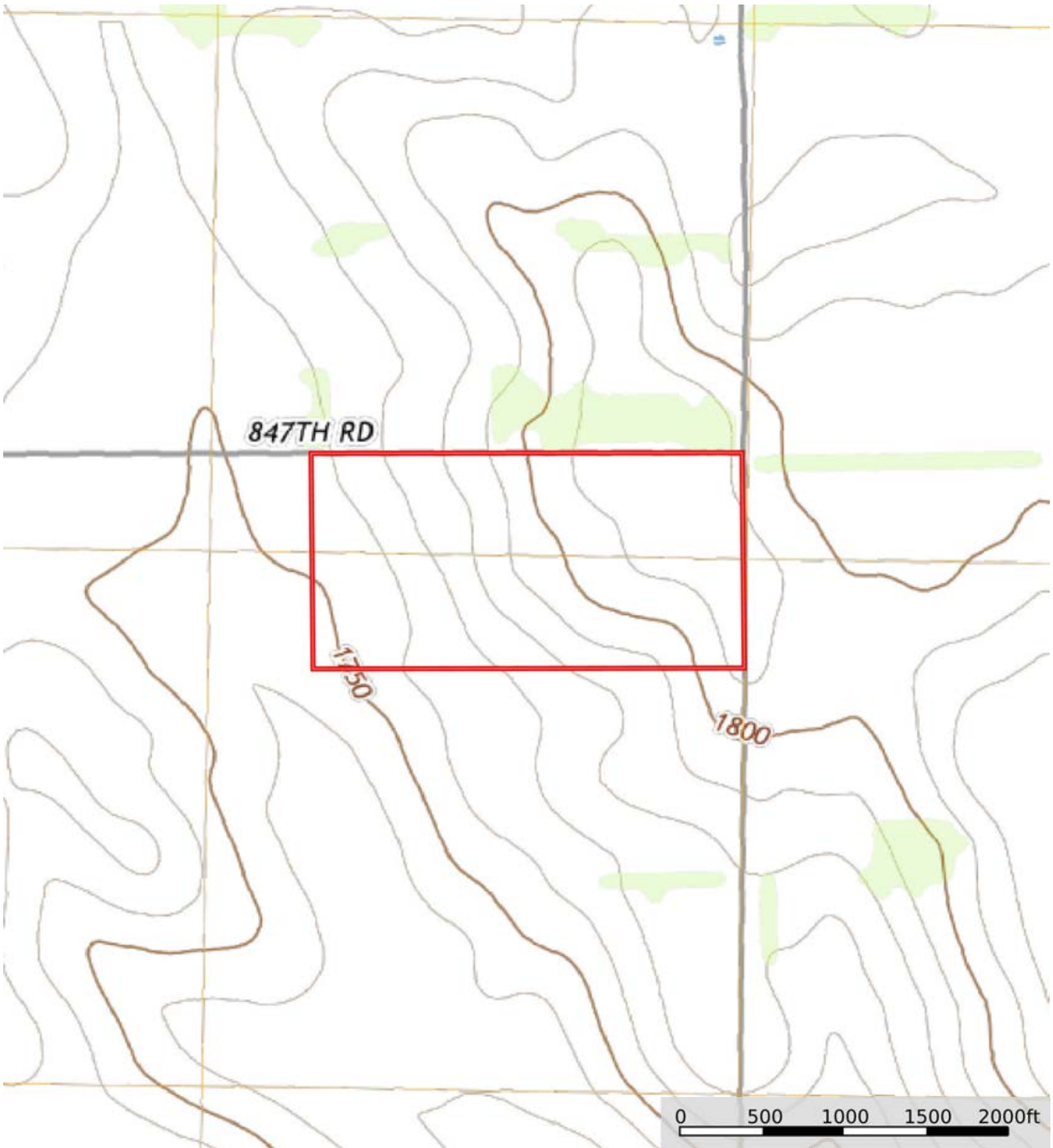
SOIL CODE	SOIL DESCRIPTION	ACRES	%	CPI	NCCPI	CAP
6578	Ortello fine sandy loam, 0 to 2 percent slopes	30.86	38.65	0	65	2e
6647	Boelus-Loretto complex, 2 to 6 percent slopes	18.71	23.43	0	50	3e
6703	Thurman loamy fine sand, 2 to 6 percent slopes	16.49	20.65	45	49	4e
6811	Moody silty clay loam, 2 to 6 percent slopes	13.79	17.27	67	76	2e
TOTALS		79.85(*)	100%	20.87	60.09	2.65


(*) Total acres may differ in the second decimal compared to the sum of each acreage soil. This is due to a round error because we only show the acres of each soil with two decimal.



L-2300195

Pierce County, Nebraska, 80 AC +/-



 Boundary