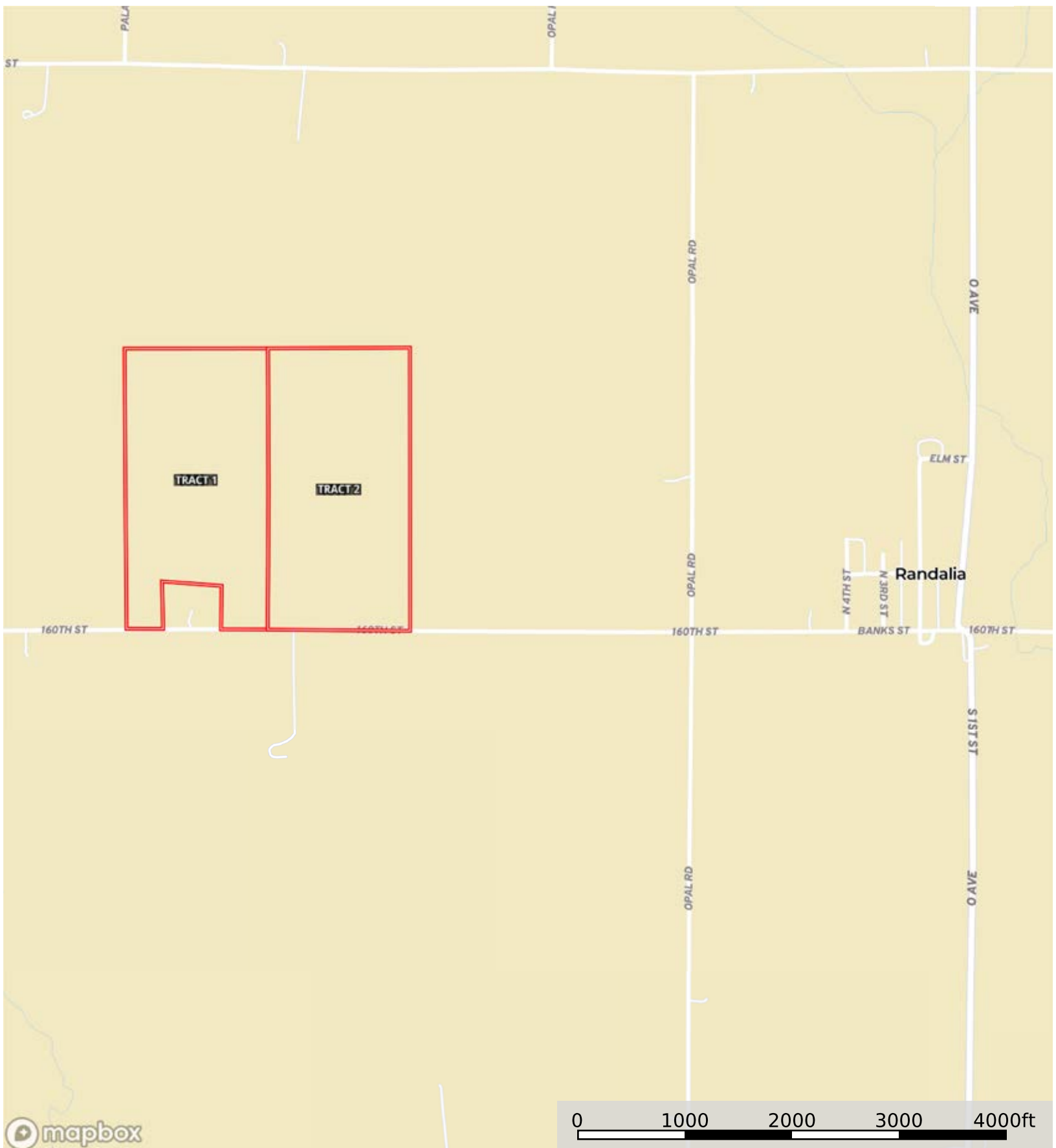
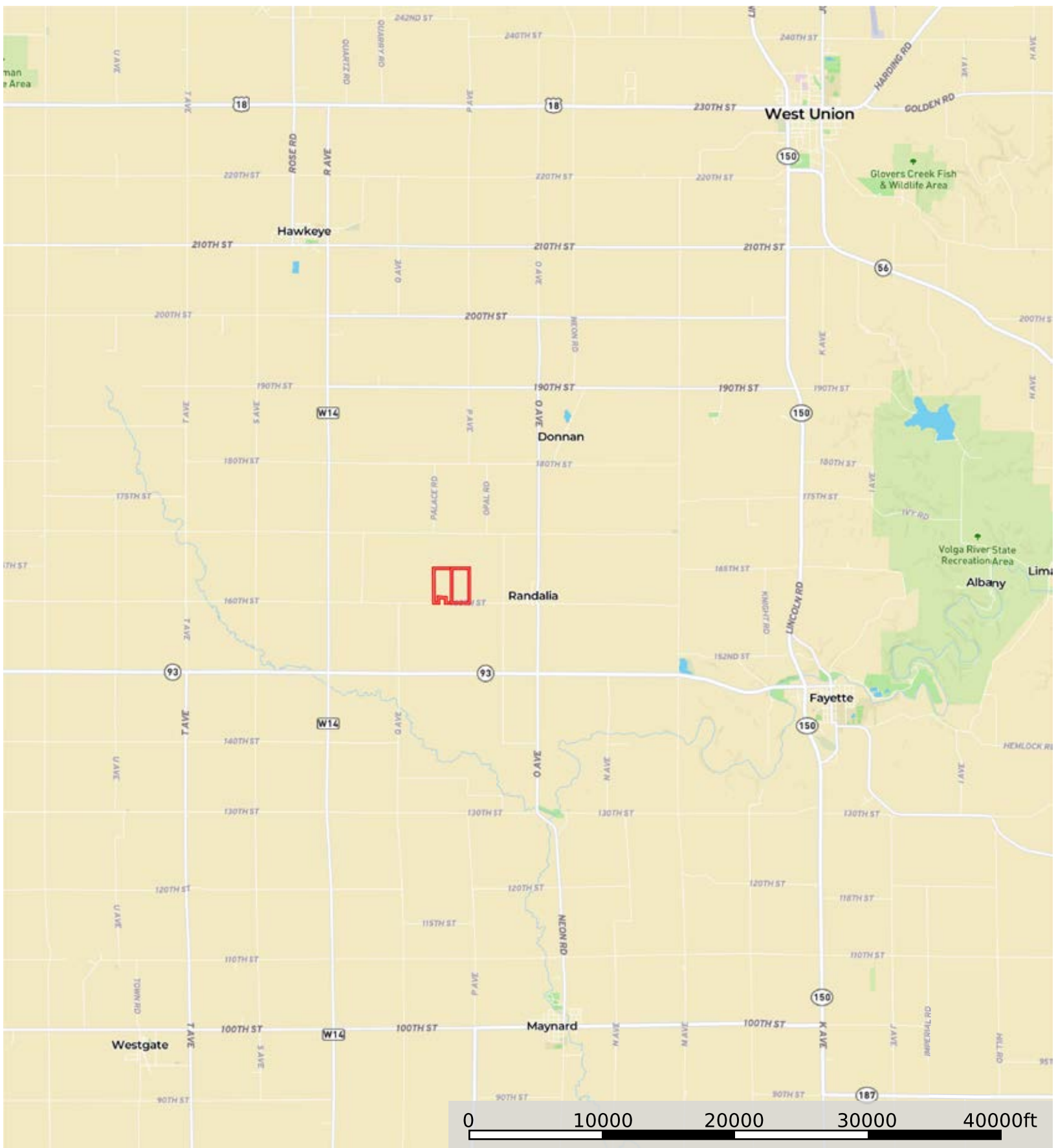


L-2300217  
Fayette County, Iowa, 155 AC +/-



- Tract 2
- Tract 1

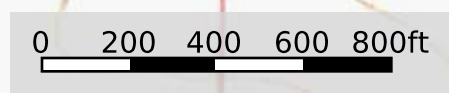
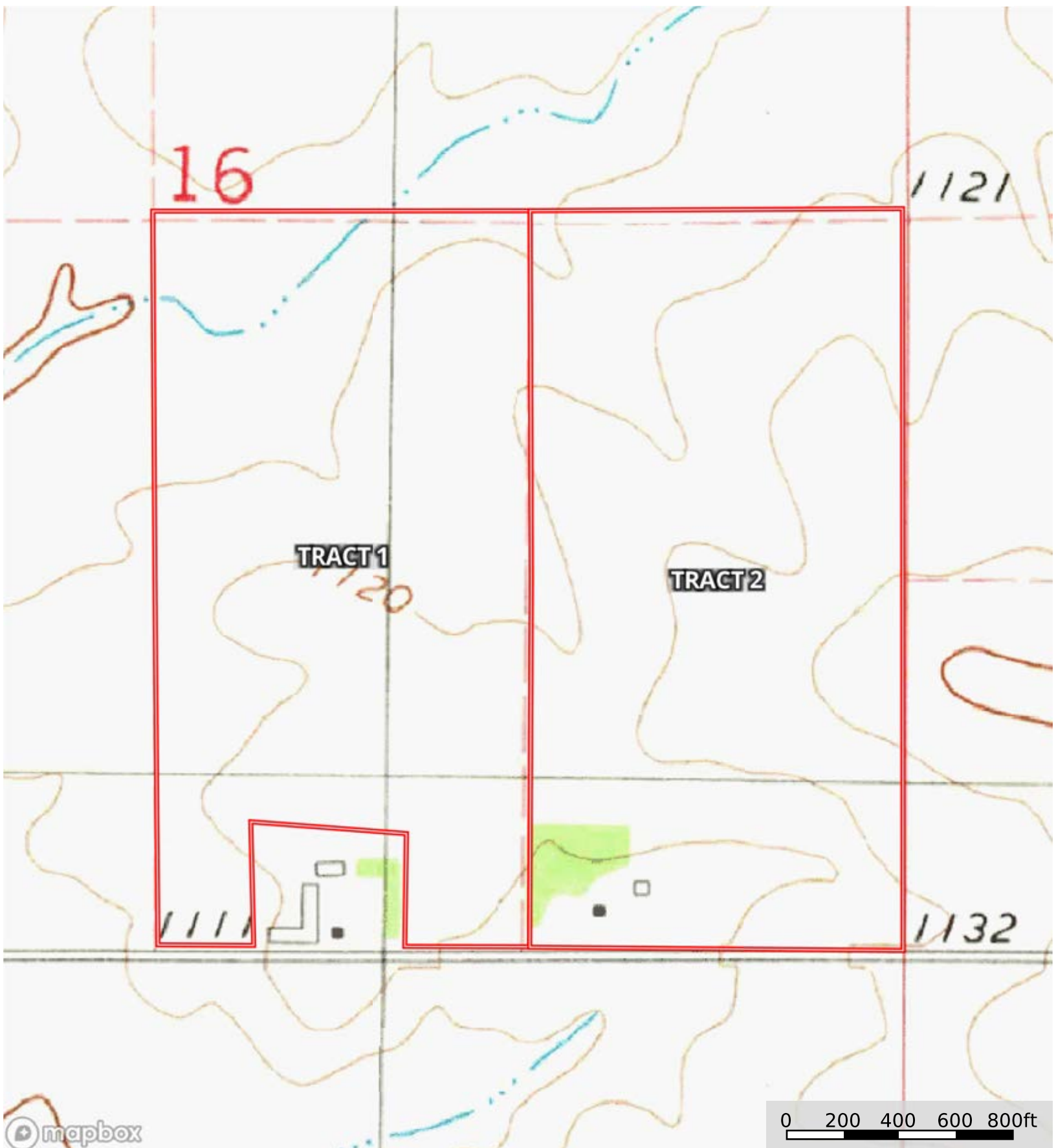
L-2300217  
Fayette County, Iowa, 155 AC +/-



Tract 2      Tract 1



- Tract 2
- Tract 1



- Tract 2
- Tract 1




- Tract 2
- Tract 1

|  All Polygons 154.66 ac


SOIL CODE	SOIL DESCRIPTION	ACRES	%	CSR2	CPI	NCCPI	CAP
83B	Kenyon loam, 2 to 5 percent slopes	70.21	45.4	90.0	0	87	2e
177	Saude loam, 0 to 2 percent slopes	21.98	14.21	60.0	0	77	2s
391B	Clyde-Floyd complex, 1 to 4 percent slopes	19.78	12.79	87.0	0	89	2w
84	Clyde clay loam, 0 to 3 percent slopes	9.55	6.17	88.0	0	91	2w
394B	Ostrander loam, 2 to 5 percent slopes	8.91	5.76	88.0	0	77	2e
175B	Dickinson fine sandy loam, 2 to 5 percent slopes	7.18	4.64	50.0	0	61	3e
1226	Lawler loam, 0 to 2 percent slopes, rarely flooded	4.73	3.06	59.0	0	87	2s
198B	Floyd loam, 1 to 4 percent slopes	4.7	3.04	89.0	0	88	2w
408B	Olin sandy loam, 2 to 5 percent slopes	2.44	1.58	64.0	5	73	2e
221	Klossner muck, 1 to 4 percent slopes	2.0	1.29	48.0	77	89	3w
782B	Donnan loam, 2 to 5 percent slopes	1.98	1.28	43.0	0	69	2e
409B	Dickinson fine sandy loam, till substratum, 2 to 5 percent slopes	1.2	0.78	74.0	0	55	3e
TOTALS		154.66(*)	100%	80.6	1.07	83.66	2.07

(\*) Total acres may differ in the second decimal compared to the sum of each acreage soil. This is due to a round error because we only show the acres of each soil with two decimal.

|  Tract 1 74.83 ac

SOIL CODE	SOIL DESCRIPTION	ACRES	%	CSR2	CPI	NCCPI	CAP
83B	Kenyon loam, 2 to 5 percent slopes	33.18	44.33	90.0	0	87	2e
177	Saude loam, 0 to 2 percent slopes	21.98	29.37	60.0	0	77	2s
175B	Dickinson fine sandy loam, 2 to 5 percent slopes	7.18	9.59	50.0	0	61	3e
1226	Lawler loam, 0 to 2 percent slopes, rarely flooded	4.73	6.32	59.0	0	87	2s
391B	Clyde-Floyd complex, 1 to 4 percent slopes	2.62	3.5	87.0	0	89	2w
84	Clyde clay loam, 0 to 3 percent slopes	2.54	3.39	88.0	0	91	2w
408B	Olin sandy loam, 2 to 5 percent slopes	2.44	3.26	64.0	5	73	2e
198B	Floyd loam, 1 to 4 percent slopes	0.13	0.17	89.0	0	88	2w
221	Klossner muck, 1 to 4 percent slopes	0.03	0.04	48.0	77	89	3w
TOTALS		74.83(*)	100%	74.34	0.19	81.31	2.1

(\*) Total acres may differ in the second decimal compared to the sum of each acreage soil. This is due to a round error because we only show the acres of each soil with two decimal.

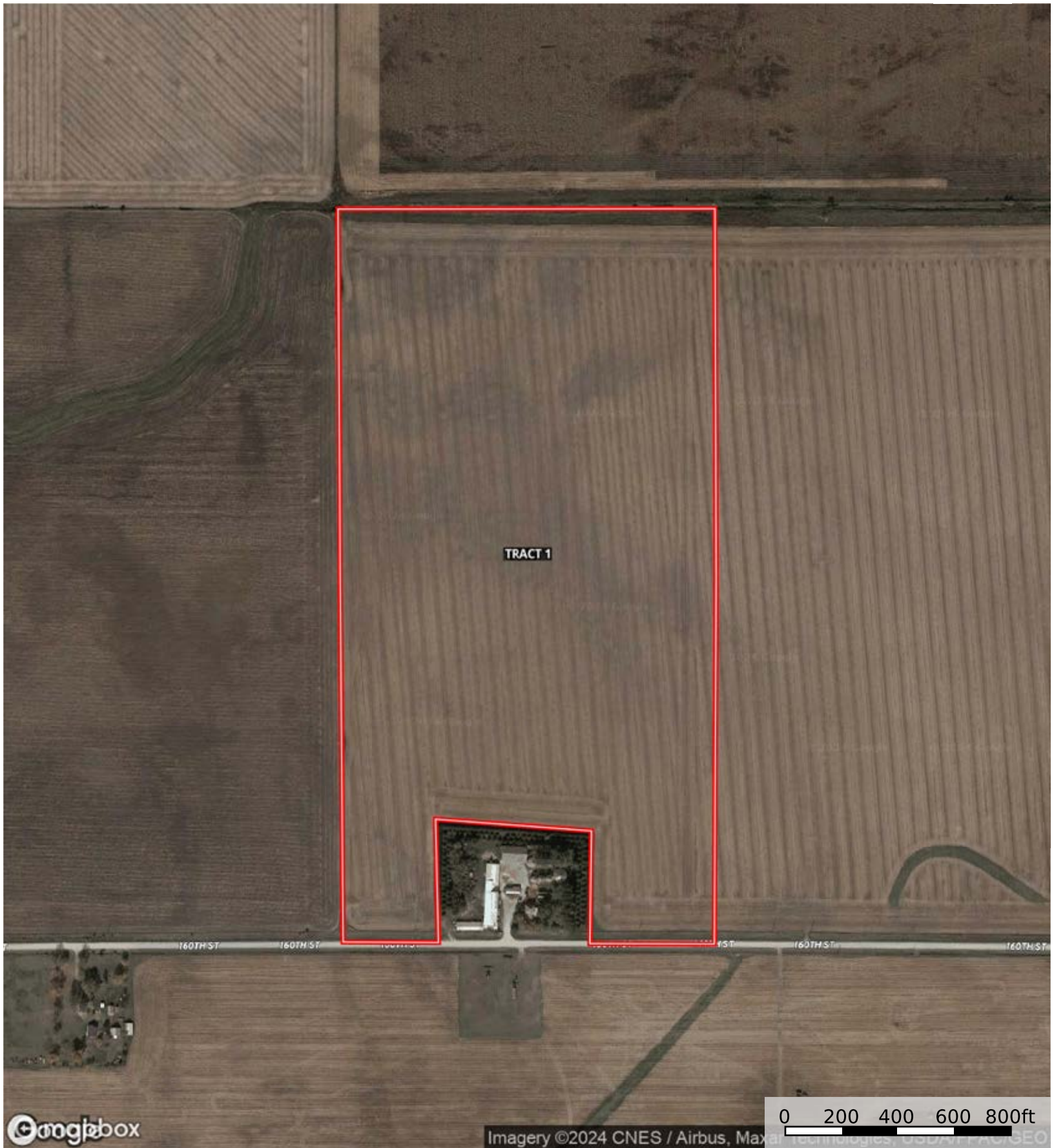
|  Tract 2 79.83 ac

SOIL CODE	SOIL DESCRIPTION	ACRES	%	CSR2	CPI	NCCPI	CAP
83B	Kenyon loam, 2 to 5 percent slopes	37.03	46.39	90.0	0	87	2e

391B	Clyde-Floyd complex, 1 to 4 percent slopes	17.16	21.5	87.0	0	89	2w
394B	Ostrander loam, 2 to 5 percent slopes	8.91	11.16	88.0	0	77	2e
84	Clyde clay loam, 0 to 3 percent slopes	7.01	8.78	88.0	0	91	2w
198B	Floyd loam, 1 to 4 percent slopes	4.57	5.73	89.0	0	88	2w
782B	Donnan loam, 2 to 5 percent slopes	1.98	2.48	43.0	0	69	2e
221	Klossner muck, 1 to 4 percent slopes	1.97	2.47	48.0	77	89	3w
409B	Dickinson fine sandy loam, till substratum, 2 to 5 percent slopes	1.2	1.5	74.0	0	55	3e
TOTALS		79.83(*)	100%	86.47	1.9	85.85	2.04

(\*) Total acres may differ in the second decimal compared to the sum of each acreage soil. This is due to a round error because we only show the acres of each soil with two decimal.

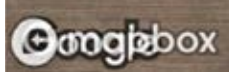




Tract 1

Kara Feller





Imagery ©2024 CNES / Airbus, Maxar Technologies, GeoEye, and Geo

Tract 1

Tract 1 74.83 ac

SOIL CODE	SOIL DESCRIPTION	ACRES	%	CSR2	CPI	NCCPI	CAP
83B	Kenyon loam, 2 to 5 percent slopes	33.18	44.33	90.0	0	87	2e
177	Saude loam, 0 to 2 percent slopes	21.98	29.37	60.0	0	77	2s
175B	Dickinson fine sandy loam, 2 to 5 percent slopes	7.18	9.59	50.0	0	61	3e
1226	Lawler loam, 0 to 2 percent slopes, rarely flooded	4.73	6.32	59.0	0	87	2s
391B	Clyde-Floyd complex, 1 to 4 percent slopes	2.62	3.5	87.0	0	89	2w
84	Clyde clay loam, 0 to 3 percent slopes	2.54	3.39	88.0	0	91	2w
408B	Olin sandy loam, 2 to 5 percent slopes	2.44	3.26	64.0	5	73	2e
198B	Floyd loam, 1 to 4 percent slopes	0.13	0.17	89.0	0	88	2w
221	Klossner muck, 1 to 4 percent slopes	0.03	0.04	48.0	77	89	3w
TOTALS		74.83(*)	100%	74.34	0.19	81.31	2.1

(\*) Total acres may differ in the second decimal compared to the sum of each acreage soil. This is due to a round error because we only show the acres of each soil with two decimal.





 Tract 2

L-2300217

Fayette County, Iowa, 80 AC +/-



Googlebox

Imagery ©2024 CNES / Airbus, Maxar Technologies, GeoEye, AeroGEO

0 200 400 600 800ft

Tract 2

Kara Feller

The information contained herein was obtained from sources deemed to be reliable. Land id™ Services makes no warranties or guarantees as to the completeness or accuracy thereof.

Tract 2 79.83 ac

SOIL CODE	SOIL DESCRIPTION	ACRES	%	CSR2	CPI	NCCPI	CAP
83B	Kenyon loam, 2 to 5 percent slopes	37.03	46.39	90.0	0	87	2e
391B	Clyde-Floyd complex, 1 to 4 percent slopes	17.16	21.5	87.0	0	89	2w
394B	Ostrander loam, 2 to 5 percent slopes	8.91	11.16	88.0	0	77	2e
84	Clyde clay loam, 0 to 3 percent slopes	7.01	8.78	88.0	0	91	2w
198B	Floyd loam, 1 to 4 percent slopes	4.57	5.73	89.0	0	88	2w
782B	Donnan loam, 2 to 5 percent slopes	1.98	2.48	43.0	0	69	2e
221	Klossner muck, 1 to 4 percent slopes	1.97	2.47	48.0	77	89	3w
409B	Dickinson fine sandy loam, till substratum, 2 to 5 percent slopes	1.2	1.5	74.0	0	55	3e
TOTALS		79.83(*)	100%	86.47	1.9	85.85	2.04

(\*) Total acres may differ in the second decimal compared to the sum of each acreage soil. This is due to a round error because we only show the acres of each soil with two decimal.

