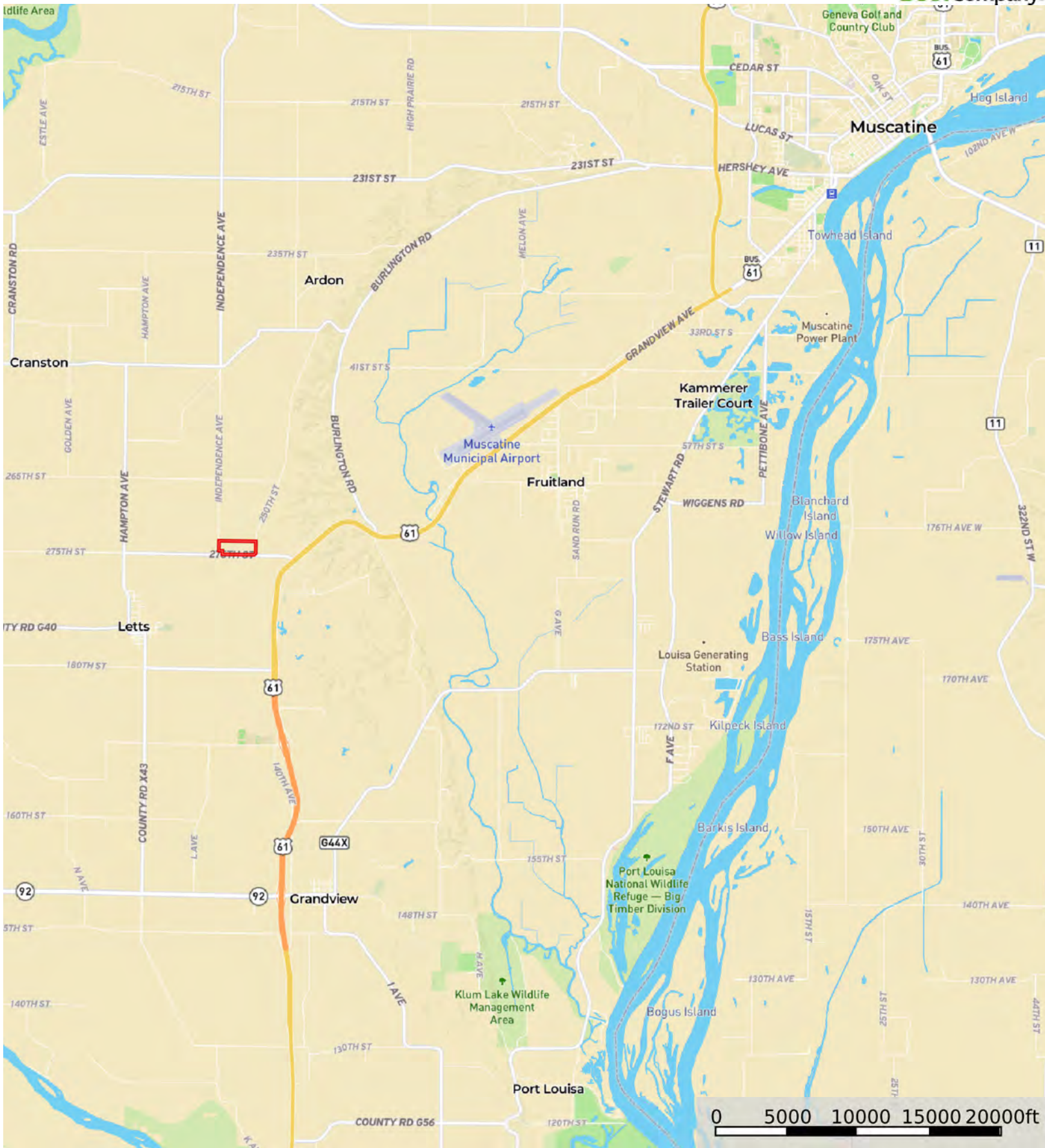
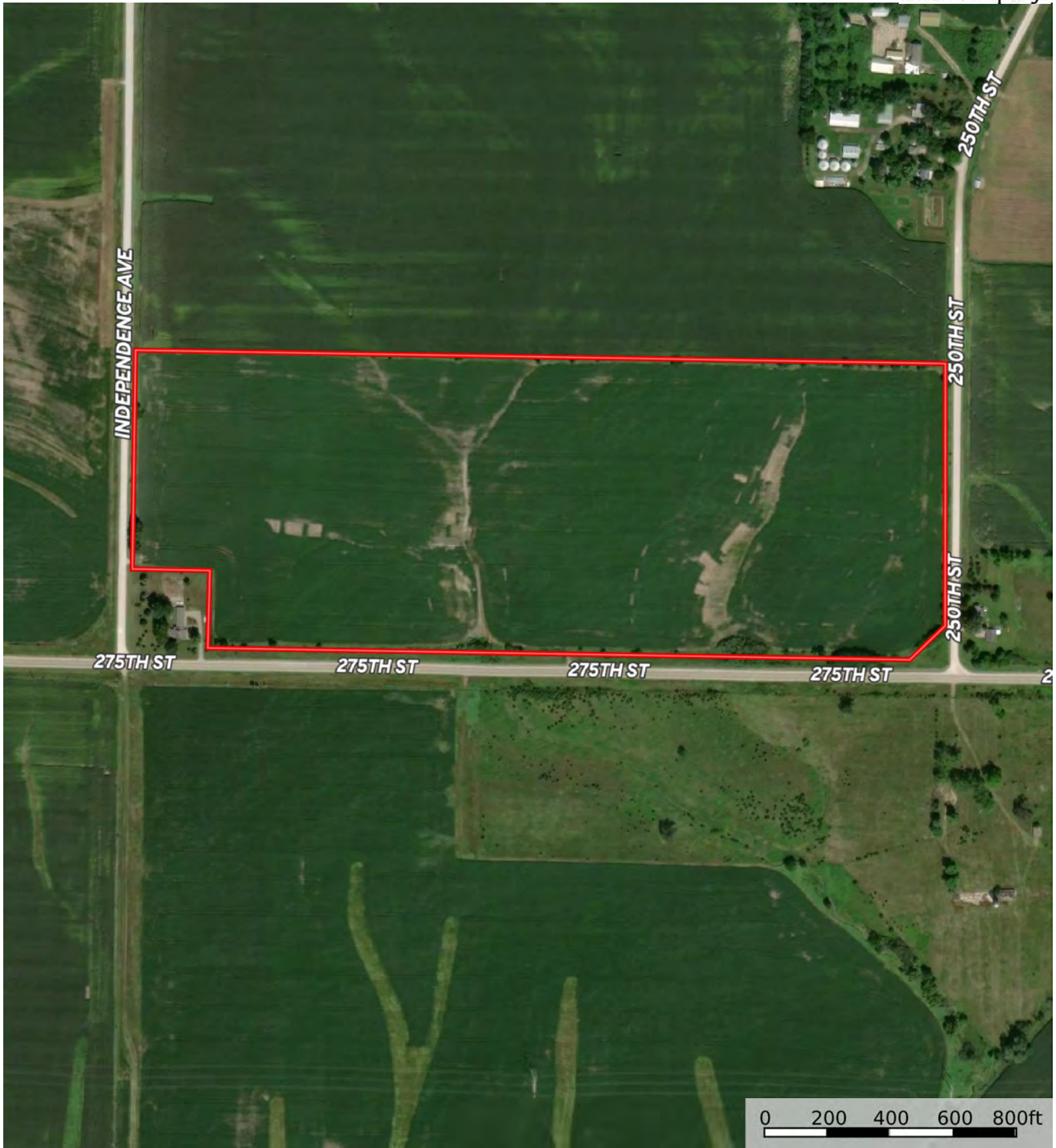


L-2300219

Muscatine County, Iowa, 58 AC +/-



Boundary



INDEPENDENCE AVE

250TH ST

250TH ST

250TH ST

275TH ST

275TH ST

275TH ST

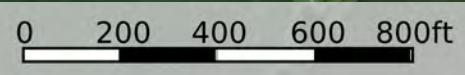
275TH ST

0 200 400 600 800ft

 Boundary



 Boundary



Boundary 54.49 ac

SOIL CODE	SOIL DESCRIPTION	ACRES	%	CSR2	CPI	NCCPI	CAP
121B	Tama silt loam, 2 to 5 percent slopes	15.28	28.04	95.0	0	94	2e
916C2	Downs silt loam, sandy substratum, 5 to 9 percent slopes, eroded	14.94	27.42	80.0	0	85	3e
467B	Radford silt loam, 2 to 5 percent slopes	7.56	13.87	75.0	0	83	2w
916B	Downs silt loam, sandy substratum, 2 to 5 percent slopes	5.91	10.85	88.0	0	92	2e
160	Walford silt loam, 0 to 2 percent slopes	5.55	10.19	82.0	0	93	3w
488C2	Newvienna silt loam, 5 to 9 percent slopes, moderately eroded	2.99	5.49	77.0	0	90	3e
291	Atterberry silt loam, 0 to 2 percent slopes	2.1	3.85	90.0	0	98	1
352D2	Whittier silt loam, 9 to 14 percent slopes, moderately eroded	0.16	0.29	15.0	0	72	4e
TOTALS		54.49(*)	100%	84.61	-	89.56	2.4

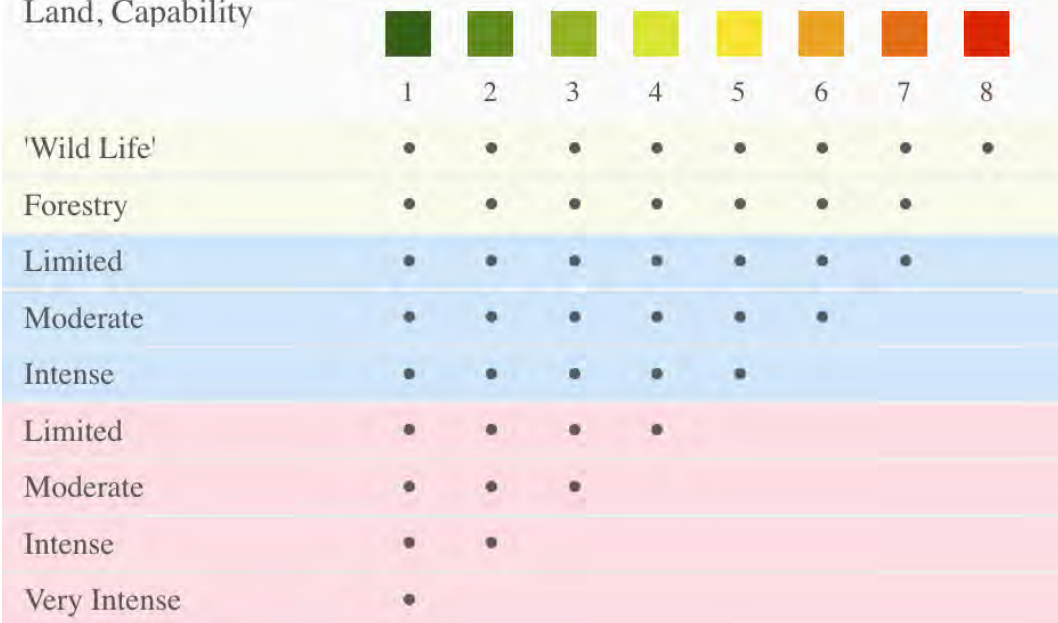
(*) Total acres may differ in the second decimal compared to the sum of each acreage soil. This is due to a round error because we only show the acres of each soil with two decimal.

Capability Legend

Increased Limitations and Hazards

Decreased Adaptability and Freedom of Choice Users

Land, Capability



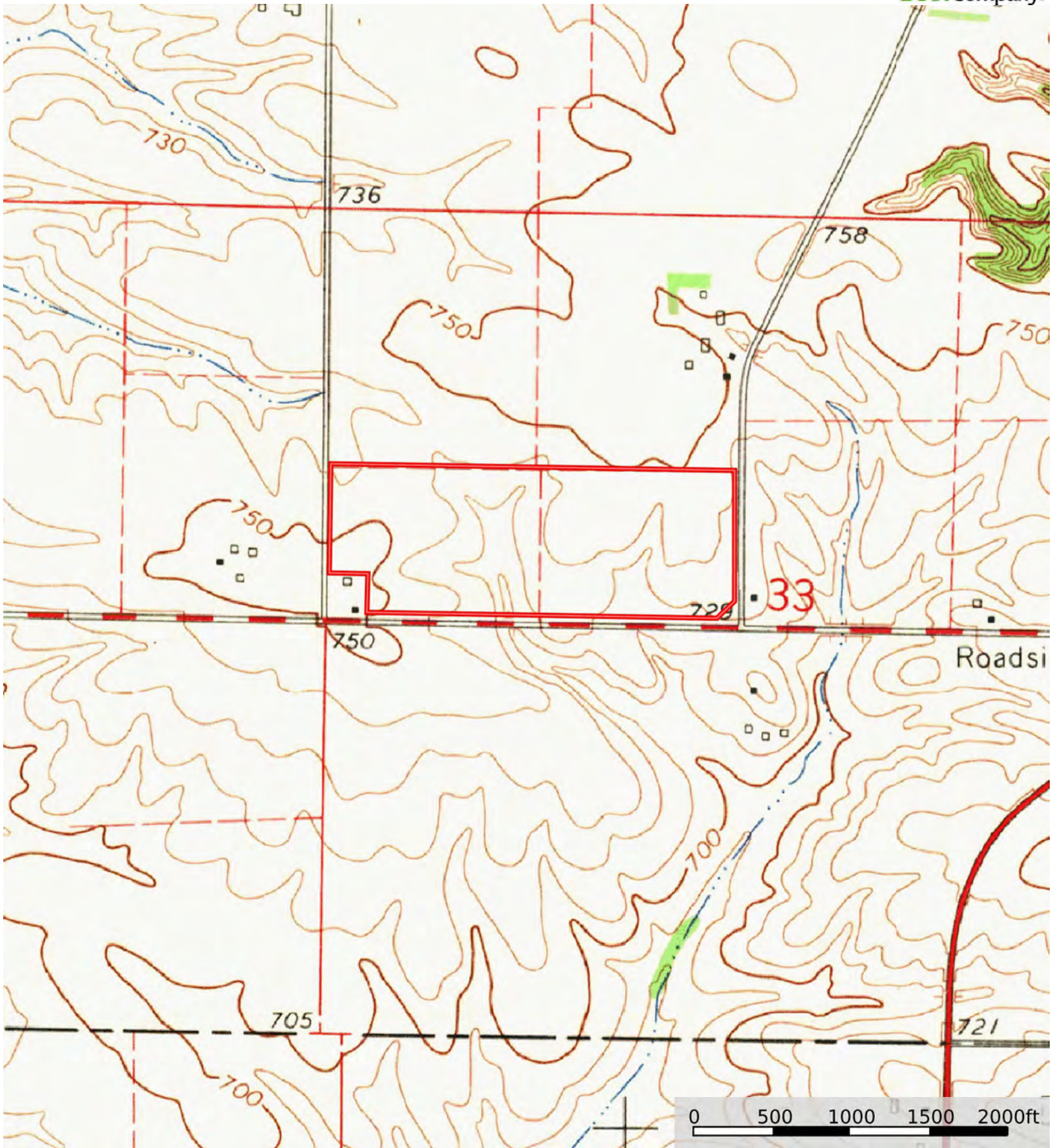
Grazing Cultivation

(c) climatic limitations (e) susceptibility to erosion

(s) soil limitations within the rooting zone (w) excess of water

L-2300219

Muscatine County, Iowa, 58 AC +/-



 Boundary