

L-2300221

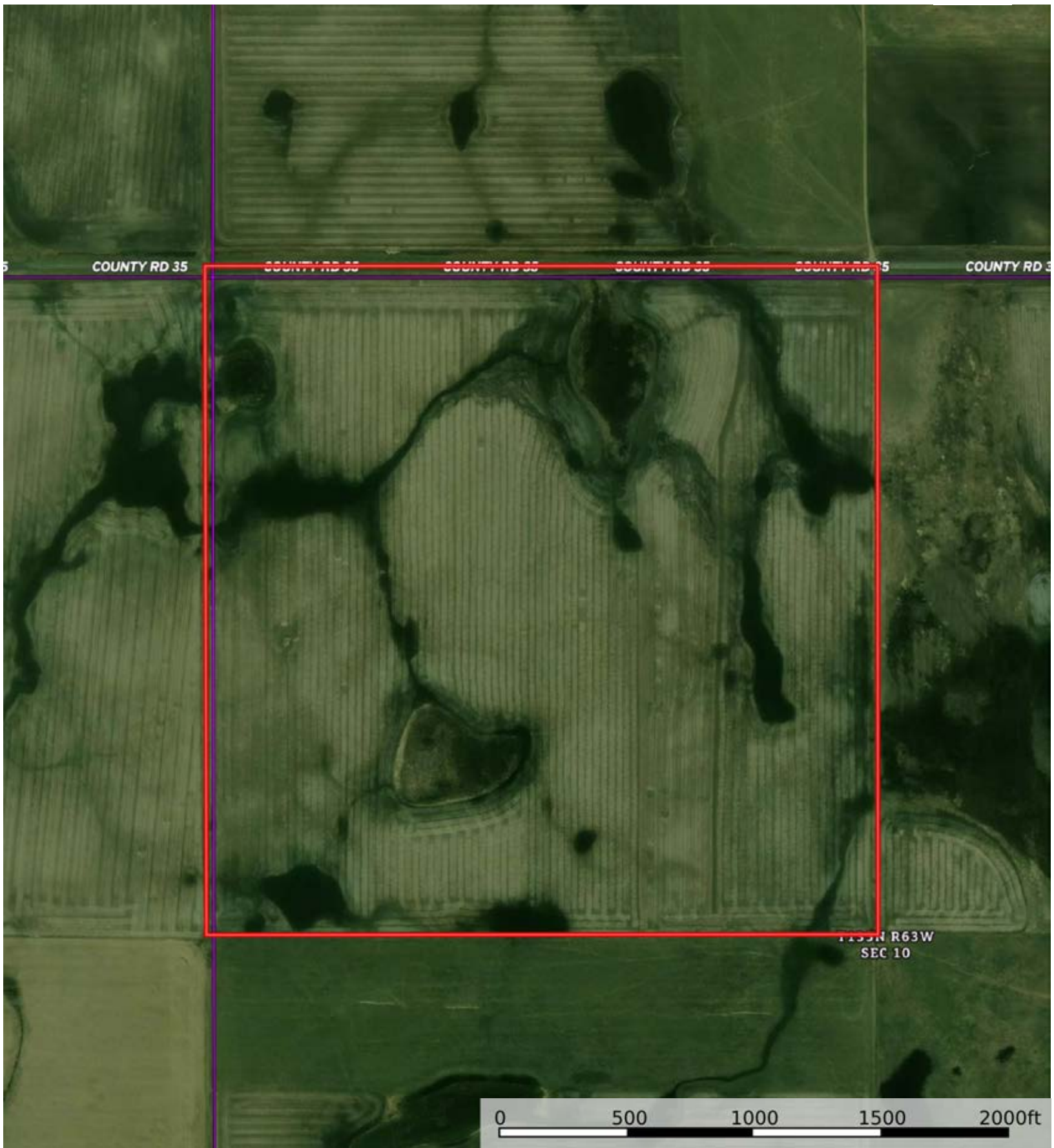
LaMoure County, North Dakota, 160 AC +/-



 Boundary

L-2300221

LaMoure County, North Dakota, 160 AC +/-



 Boundary




The information contained herein was obtained from sources deemed to be reliable. MapRight Services makes no warranties or guarantees as to the completeness or accuracy thereof.

L-2300221

LaMoure County, North Dakota, 160 AC +/-



 Boundary

|  Boundary 160.16 ac

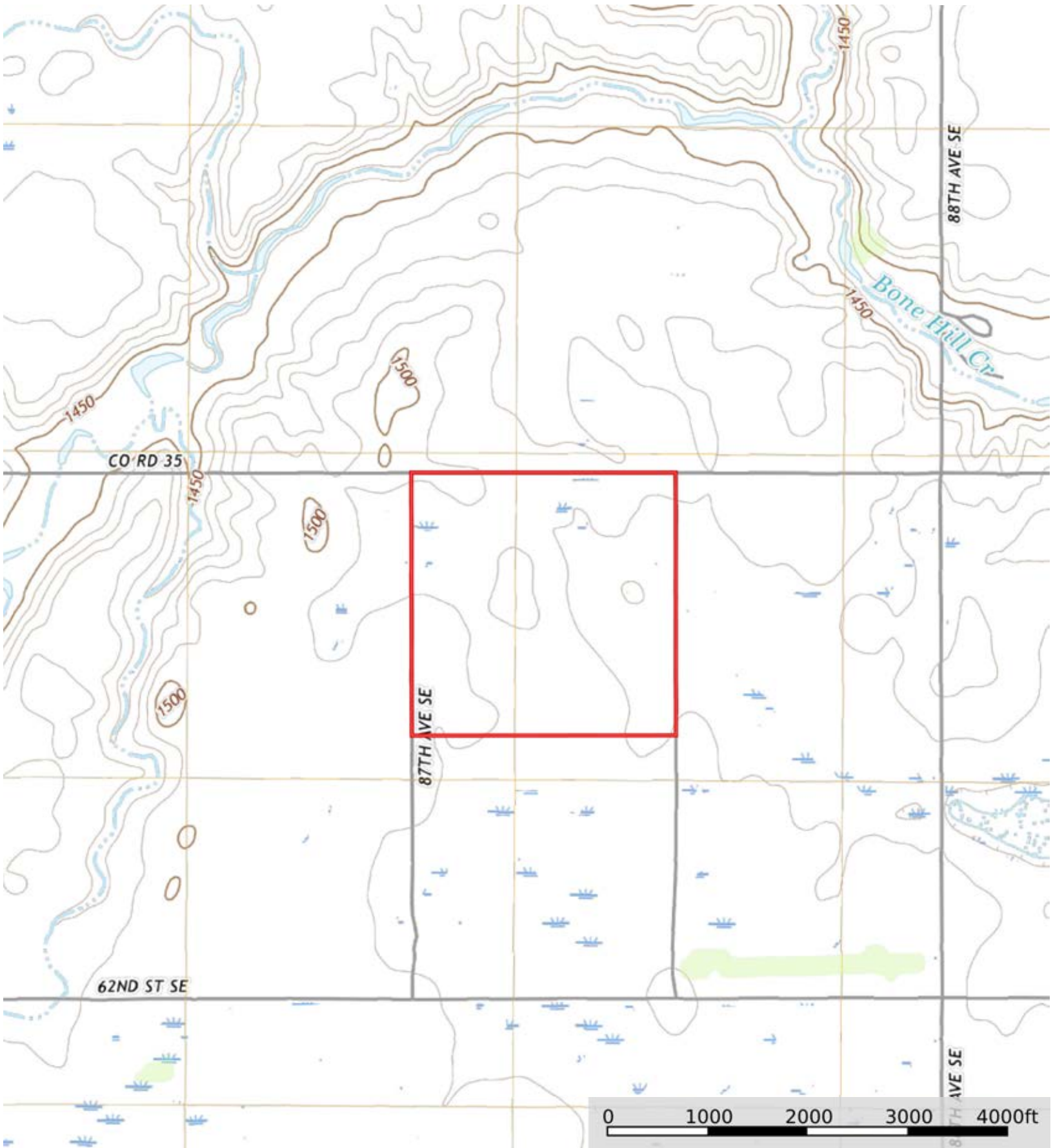
SOIL CODE	SOIL DESCRIPTION	ACRES	%	CPI	NCCPI	CAP
G143A	Barnes-Svea loams, 0 to 3 percent slopes	87.22	54.46	86	64	2c
G143B	Barnes-Svea loams, 3 to 6 percent slopes	48.13	30.05	76	62	2e
G3A	Parnell silty clay loam, 0 to 1 percent slopes	13.44	8.39	26	23	5w
G275A	Renshaw loam, 0 to 2 percent slopes	10.55	6.59	45	31	4s
G276A	Renshaw-Sioux complex, 0 to 2 percent slopes	0.63	0.39	42	26	4s
G6A	Vallers loam, 0 to 1 percent slopes	0.19	0.12	47	58	4w
TOTALS		160.16(*)	100%	75.04	57.63	2.39

(\*) Total acres may differ in the second decimal compared to the sum of each acreage soil. This is due to a round error because we only show the acres of each soil with two decimal.



L-2300221

LaMoure County, North Dakota, 160 AC +/-



 Boundary