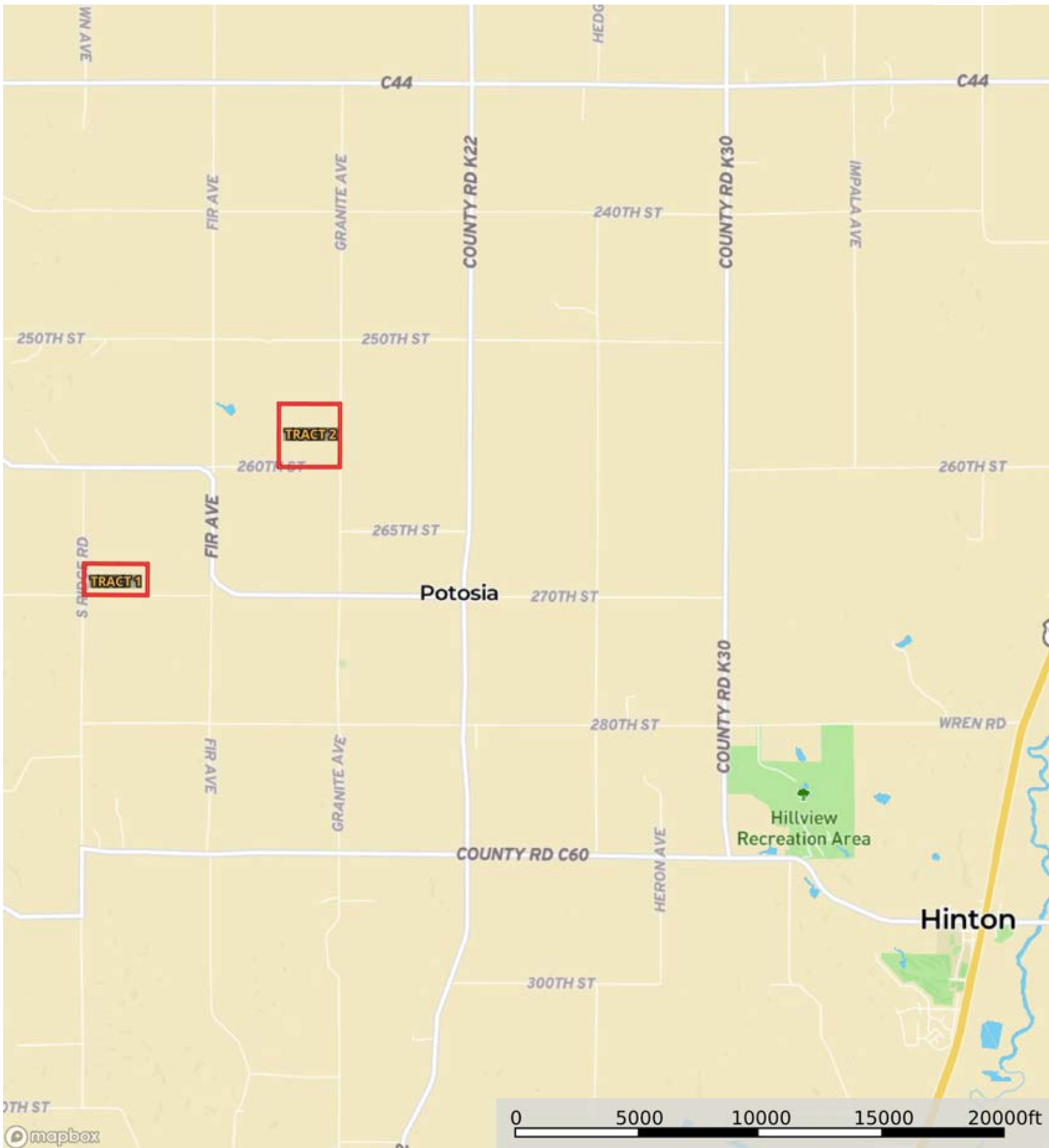


L-2300238

Plymouth County, Iowa, 220 AC +/-



Boundary

**Beaulieu Trust**



The information contained herein was obtained from sources deemed to be reliable. MapRight Services makes no warranties or guarantees as to the completeness or accuracy thereof.

L-2300238

Plymouth County, Iowa, 220 AC +/-



Boundary

**Beaulieu Trust**

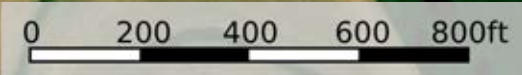


The information contained herein was obtained from sources deemed to be reliable. MapRight Services makes no warranties or guarantees as to the completeness or accuracy thereof.





mapbox



Boundary

**Beaulieu Trust**

|  Boundary 76.74 ac

SOIL CODE	SOIL DESCRIPTION	ACRES	%	CSR2	CPI	NCCPI	CAP
10C2	Monona silt loam, 5 to 9 percent slopes, eroded	31.87	41.54	86.0	0	84	3e
1D3	Ida silt loam, 9 to 14 percent slopes, severely eroded	21.26	27.71	32.0	0	61	3e
18B	McPaul-Kennebec silt loams, 2 to 5 percent slopes	12.07	15.73	75.0	0	84	2e
1C3	Ida silt loam, 5 to 9 percent slopes, severely eroded	4.08	5.32	58.0	0	63	3e
1E3	Ida silt loam, 14 to 20 percent slopes, severely eroded	3.94	5.13	18.0	0	57	4e
10B	Monona silt loam, 2 to 5 percent slopes	3.52	4.59	95.0	0	90	2e
TOTALS		76.74(*)	100%	64.75	-	75.41	2.85

(\*) Total acres may differ in the second decimal compared to the sum of each acreage soil. This is due to a round error because we only show the acres of each soil with two decimal.





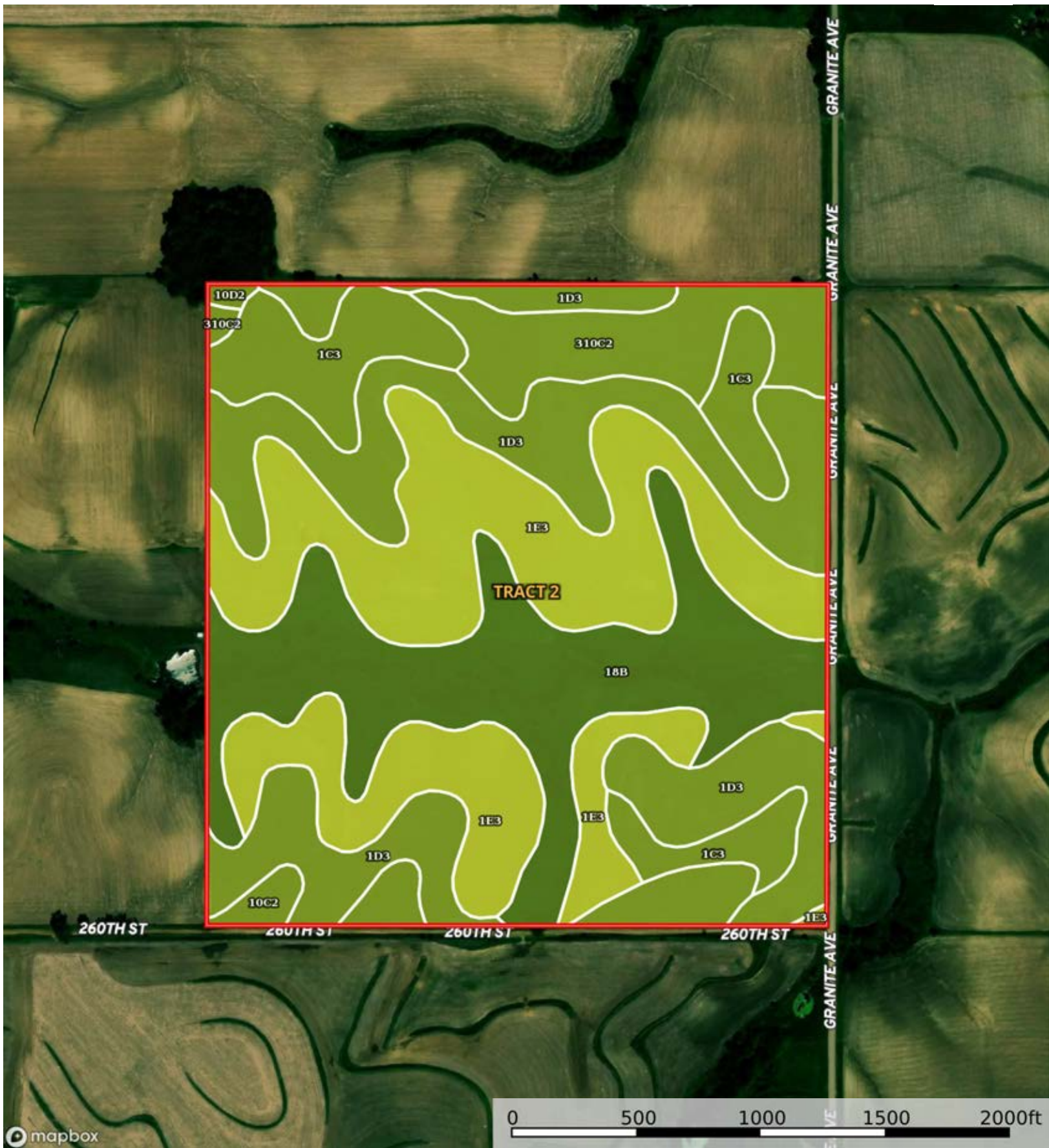


Boundary  
**Beaulieu Trust**



L-2300238

Plymouth County, Iowa, 220 AC +/-



Boundary



The information contained herein was obtained from sources deemed to be reliable. MapRight Services makes no warranties or guarantees as to the completeness or accuracy thereof.

Boundary 148.88 ac

SOIL CODE	SOIL DESCRIPTION	ACRES	%	CSR2	CPI	NCCPI	CAP
1E3	Ida silt loam, 14 to 20 percent slopes, severely eroded	45.0	30.23	18.0	0	57	4e
1D3	Ida silt loam, 9 to 14 percent slopes, severely eroded	39.65	26.63	32.0	0	61	3e
18B	McPaul-Kennebec silt loams, 2 to 5 percent slopes	32.08	21.55	75.0	0	84	2e
1C3	Ida silt loam, 5 to 9 percent slopes, severely eroded	14.59	9.8	58.0	0	63	3e
310C2	Galva silty clay loam, 5 to 9 percent slopes, eroded	11.73	7.88	84.0	82	69	3e
10C2	Monona silt loam, 5 to 9 percent slopes, eroded	5.45	3.66	86.0	0	84	3e
10D2	Monona silt loam, 9 to 14 percent slopes, eroded	0.38	0.26	60.0	0	80	3e
TOTALS		148.88(*)	100%	45.73	6.46	66.46	3.09

(\*) Total acres may differ in the second decimal compared to the sum of each acreage soil. This is due to a round error because we only show the acres of each soil with two decimal.

