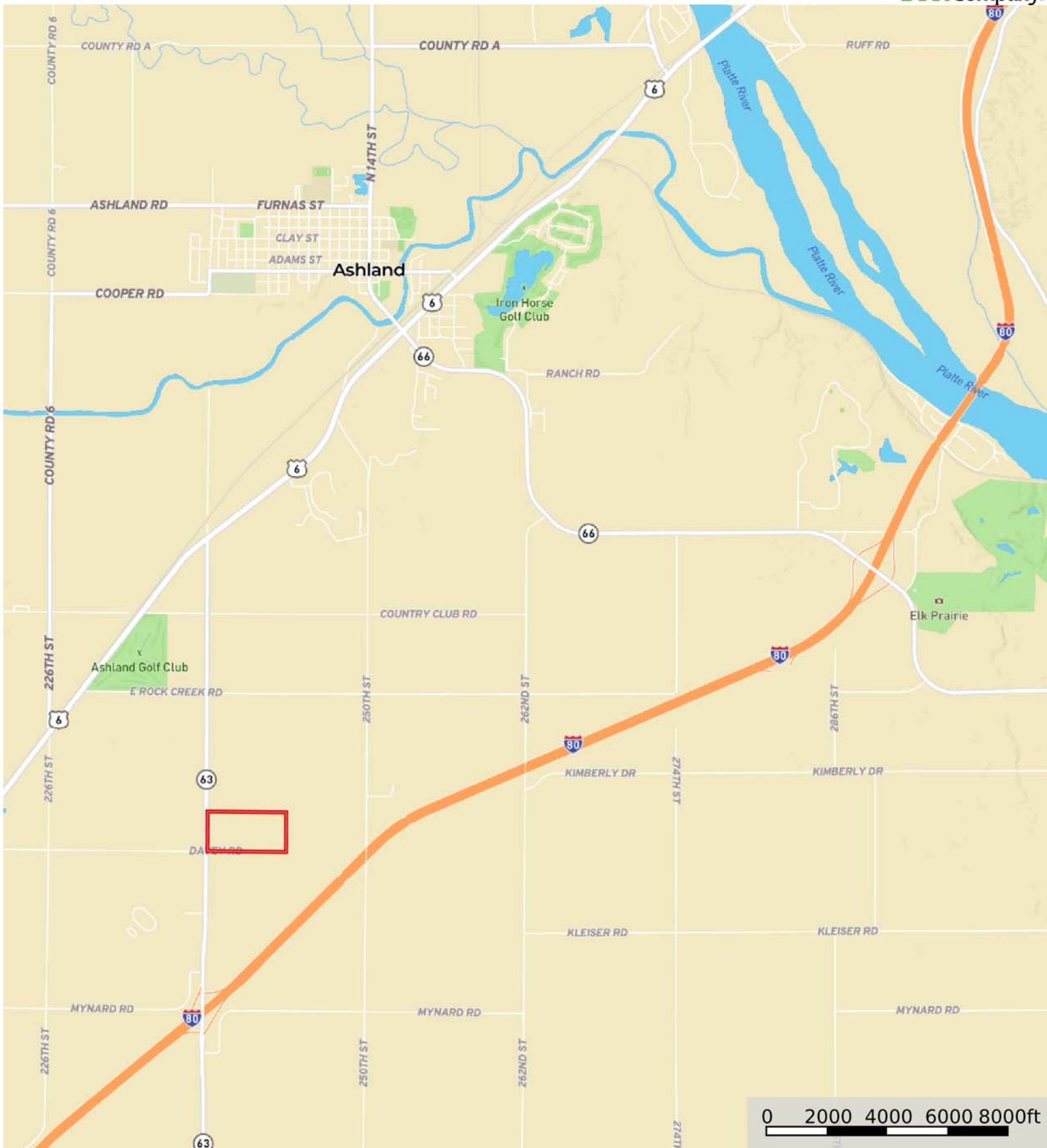


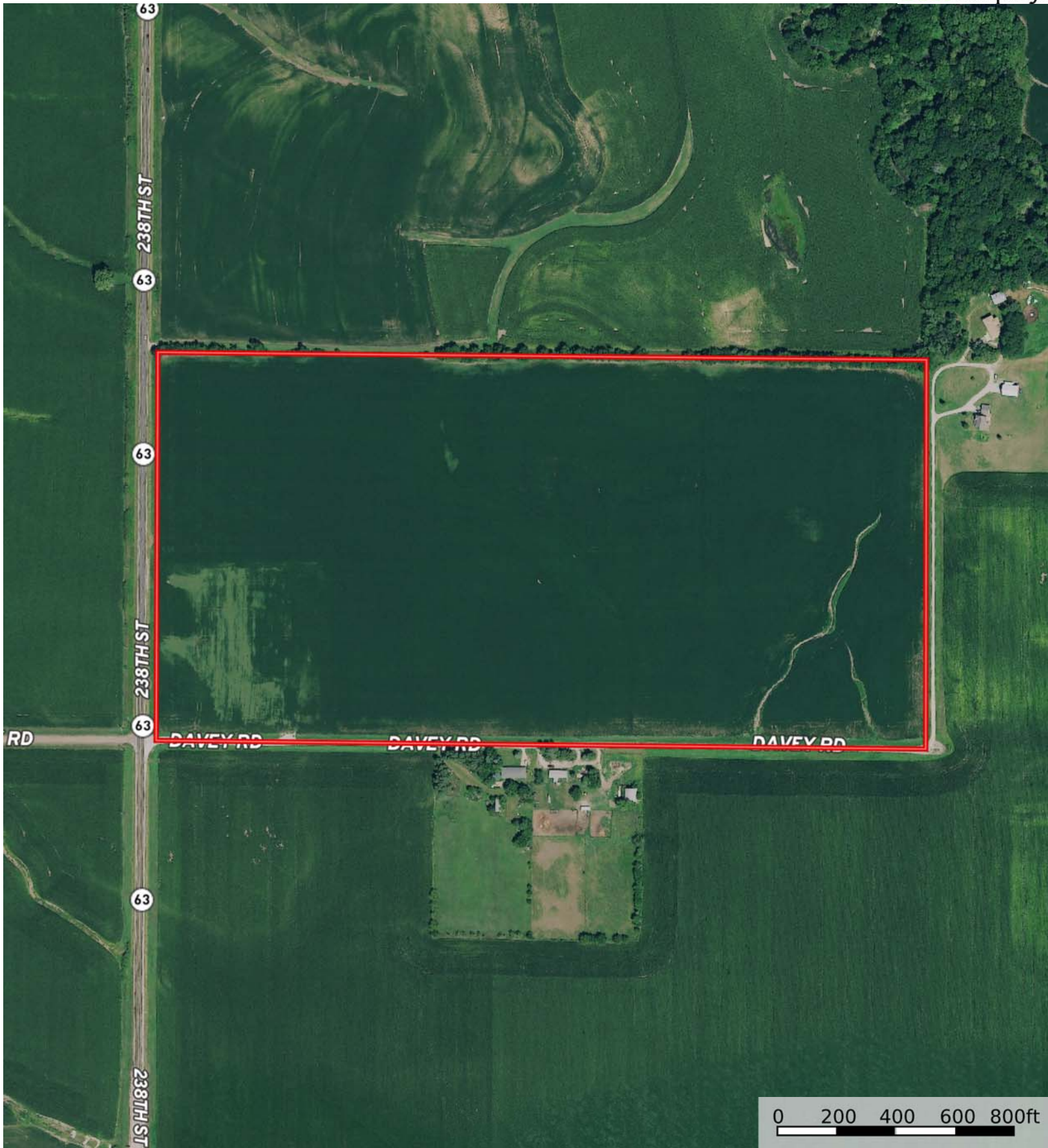
L-2300244

Cass County, Nebraska, 78.7 AC +/-



Boundary





 Boundary



 Boundary

|  Boundary 78.68 ac

SOIL CODE	SOIL DESCRIPTION	ACRES	%	CPI	NCCPI	CAP
7644	Yutan silty clay loam, 6 to 11 percent slopes, eroded	39.28	49.92	0	60	3e
7206	Aksarben silty clay loam, 2 to 6 percent slopes	27.96	35.54	0	68	2e
7050	Kennebec silt loam, occasionally flooded	8.63	10.97	0	94	2w
7641	Yutan silty clay loam, 2 to 6 percent slopes, eroded	2.81	3.57	0	61	2e
TOTALS		78.68(*)	100%	-	66.61	2.5









(\*) Total acres may differ in the second decimal compared to the sum of each acreage soil. This is due to a round error because we only show the acres of each soil with two decimal.

### Capability Legend

Increased Limitations and Hazards

Decreased Adaptability and Freedom of Choice Users

Land, Capability

								
	1	2	3	4	5	6	7	8
'Wild Life'	•	•	•	•	•	•	•	•
Forestry	•	•	•	•	•	•	•	
Limited	•	•	•	•	•	•	•	
Moderate	•	•	•	•	•	•		
Intense	•	•	•	•	•			
Limited	•	•	•	•				
Moderate	•	•	•					
Intense	•	•						
Very Intense	•							

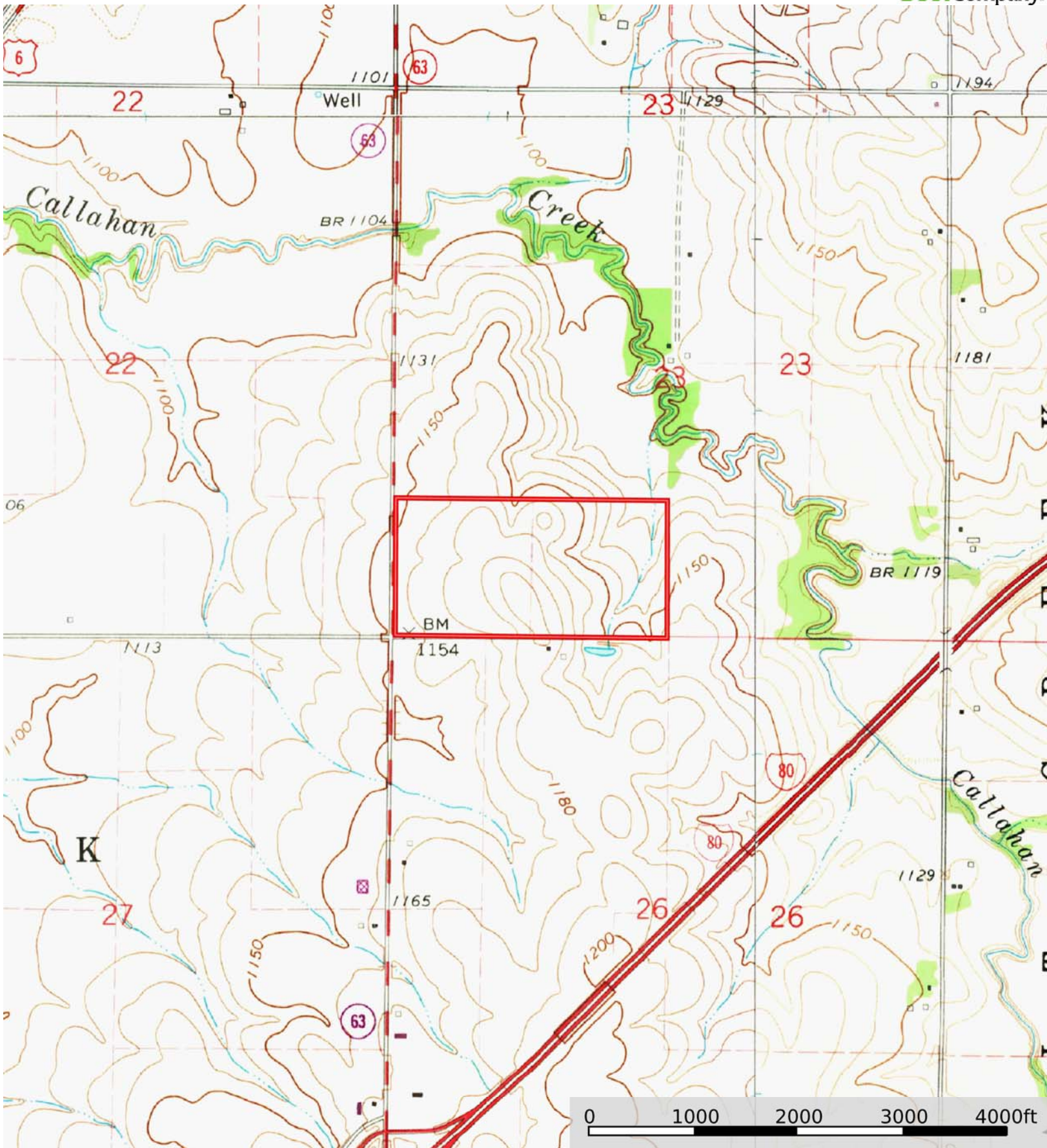
### Grazing Cultivation

(c) climatic limitations (e) susceptibility to erosion

(s) soil limitations within the rooting zone (w) excess of water

L-2300244

Cass County, Nebraska, 78.7 AC +/-



Boundary