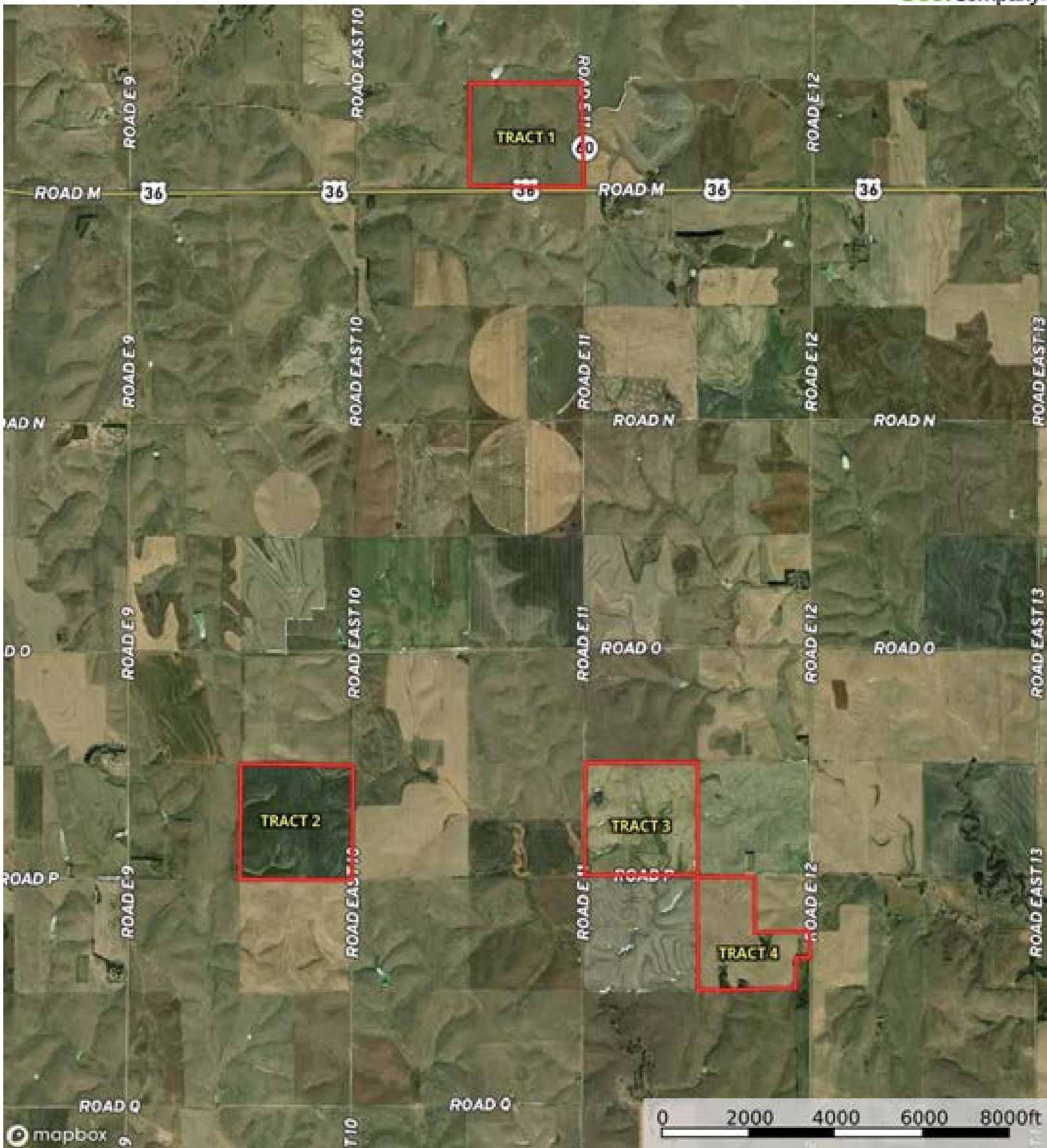


L-2300251

Norton County, Kansas, 569.96 AC +/-



Boundary



Boundary

L-2300251

Norton County, Kansas, 569.96 AC +/-



Boundary



The information contained herein was obtained from sources deemed to be reliable. MapRight Services makes no warranties or guarantees as to the completeness or accuracy thereof.

L-2300251

Norton County, Kansas, 569.96 AC +/-



mapbox

Boundary

|  Boundary 142.4 ac

SOIL CODE	SOIL DESCRIPTION	ACRES	%	CPI	NCCPI	CAP
2828	Uly-Penden complex, 6 to 20 percent slopes	69.03	48.48	0	65	6e
2578	Coly and Uly silt loams, 6 to 10 percent slopes, eroded	45.62	32.04	0	65	4e
2674	Holdrege silt loam, 1 to 3 percent slopes, plains and breaks	25.83	18.14	0	78	2e
2812	Uly silt loam, 10 to 20 percent slopes	1.92	1.35	0	68	6e
TOTALS		142.4(*)	100%	-	67.4	4.63


(\*) Total acres may differ in the second decimal compared to the sum of each acreage soil. This is due to a round error because we only show the acres of each soil with two decimal.



L-2300251

Norton County, Kansas, 569.96 AC +/-



 Boundary

L-2300251

Norton County, Kansas, 569.96 AC +/-



Boundary

|  Boundary 158.38 ac

SOIL CODE	SOIL DESCRIPTION	ACRES	%	CPI	NCCPI	CAP
2674	Holdrege silt loam, 1 to 3 percent slopes, plains and breaks	64.27	40.58	0	78	2e
2812	Uly silt loam, 10 to 20 percent slopes	50.02	31.58	0	68	6e
2578	Coly and Uly silt loams, 6 to 10 percent slopes, eroded	23.3	14.71	0	65	4e
2819	Uly silt loam, 6 to 11 percent slopes	20.79	13.13	0	75	4e
TOTALS		158.38(*)	100%	-	72.54	3.82

(\*) Total acres may differ in the second decimal compared to the sum of each acreage soil. This is due to a round error because we only show the acres of each soil with two decimal.





L-2300251

Norton County, Kansas, 569.96 AC +/-



Boundary



Boundary

|  Boundary 155.17 ac

SOIL CODE	SOIL DESCRIPTION	ACRES	%	CPI	NCCPI	CAP
2578	Coly and Uly silt loams, 6 to 10 percent slopes, eroded	67.65	43.59	0	65	4e
2674	Holdrege silt loam, 1 to 3 percent slopes, plains and breaks	23.26	14.99	0	78	2e
2579	Coly and Uly silt loams, 10 to 20 percent slopes, eroded	22.33	14.39	0	50	6e
2812	Uly silt loam, 10 to 20 percent slopes	20.65	13.31	0	68	6e
2669	Holdrege silt loam, 1 to 3 percent slopes, eroded	16.54	10.66	0	70	2e
3561	Hobbs silt loam, occasionally flooded	4.74	3.05	0	80	2w
TOTALS		155.17(*)	100%	-	66.17	3.98

(\*) Total acres may differ in the second decimal compared to the sum of each acreage soil. This is due to a round error because we only show the acres of each soil with two decimal.



L-2300251

Norton County, Kansas, 569.96 AC +/-



Boundary



The information contained herein was obtained from sources deemed to be reliable. MapRight Services makes no warranties or guarantees as to the completeness or accuracy thereof.

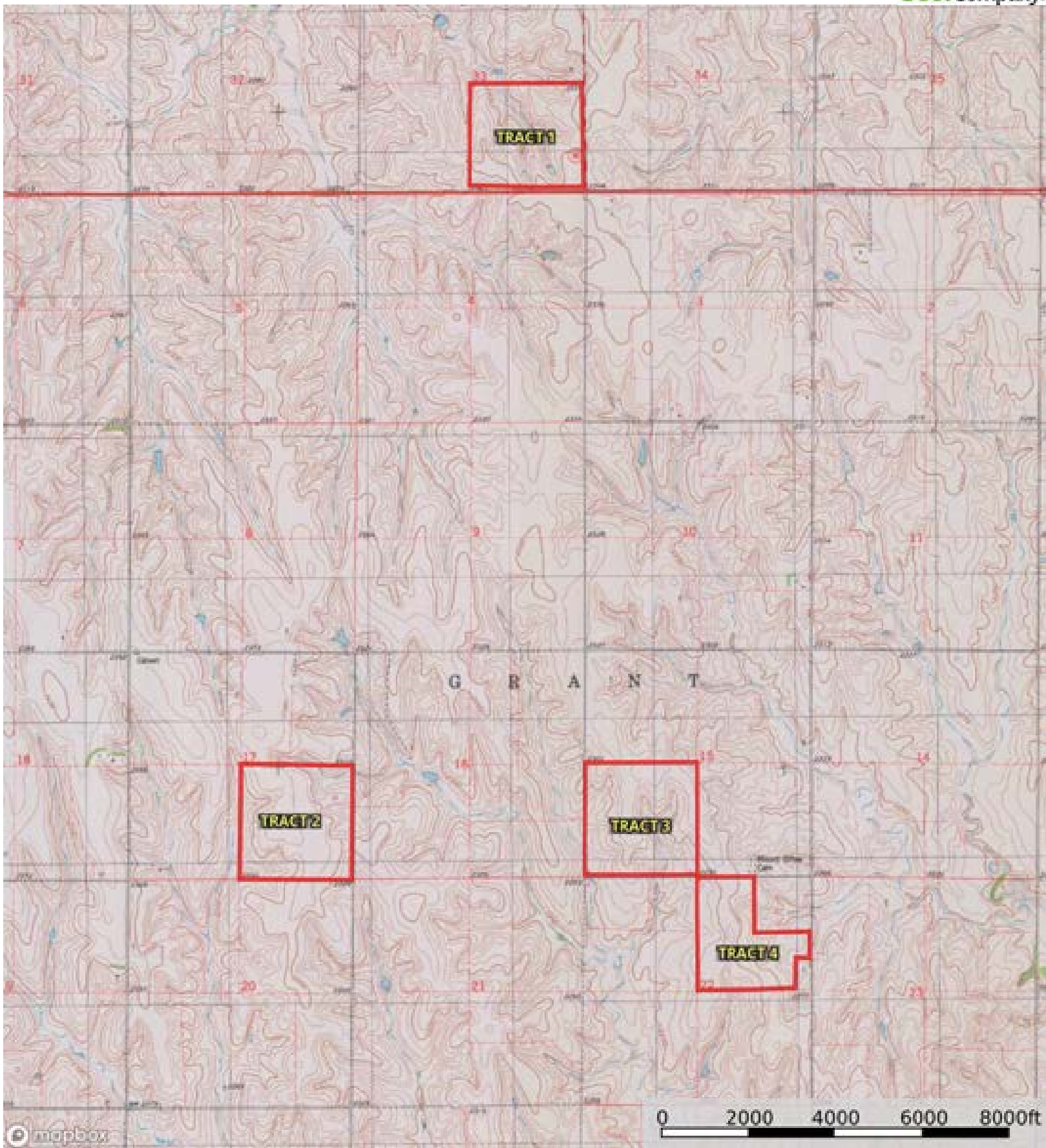



|  Boundary 112.26 ac

SOIL CODE	SOIL DESCRIPTION	ACRES	%	CPI	NCCPI	CAP
2578	Coly and Uly silt loams, 6 to 10 percent slopes, eroded	46.65	41.55	0	65	4e
2669	Holdrege silt loam, 1 to 3 percent slopes, eroded	34.21	30.47	0	70	2e
2812	Uly silt loam, 10 to 20 percent slopes	20.02	17.83	0	68	6e
2674	Holdrege silt loam, 1 to 3 percent slopes, plains and breaks	7.02	6.25	0	78	2e
2676	Holdrege silt loam, 3 to 7 percent slopes, eroded, plains and breaks	4.36	3.88	0	70	3e
TOTALS		112.26(*)	100%	-	68.06	3.58

(\*) Total acres may differ in the second decimal compared to the sum of each acreage soil. This is due to a round error because we only show the acres of each soil with two decimal.





 Boundary