

L-2300263

Knox County, Nebraska, 343 AC +/-



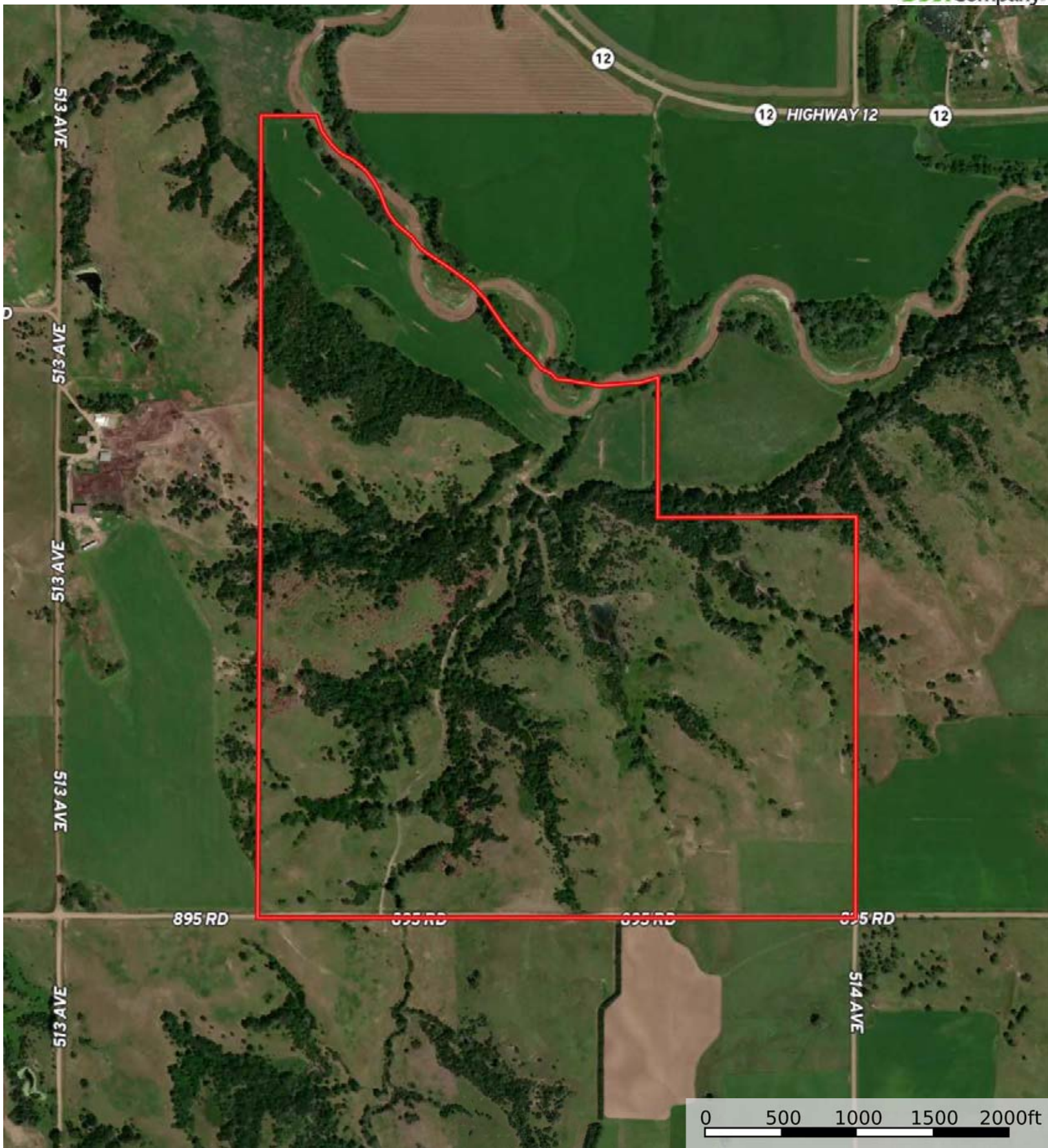
 Boundary




The information contained herein was obtained from sources deemed to be reliable. MapRight Services makes no warranties or guarantees as to the completeness or accuracy thereof.

L-2300263

Knox County, Nebraska, 343 AC +/-



 Boundary

|  Boundary 336.36 ac

SOIL CODE	SOIL DESCRIPTION	ACRES	%	CPI	NCCPI	CAP
3225	Labu-Sansarc silty clays, 9 to 35 percent slopes	97.67	29.04	33	20	6e
8931	Simeon sand, 6 to 30 percent slopes, eroded	77.87	23.15	0	17	6s
6727	Thurman fine sandy loam, 2 to 11 percent slopes	49.33	14.67	0	35	4e
6300	Aowa silt loam, occasionally flooded	34.12	10.14	0	66	2w
2322	Inavale fine sand, 0 to 5 percent slopes, channeled, frequently flooded	20.29	6.03	0	16	6w
3320	Sansarc silty clay, 9 to 35 percent slopes	15.89	4.72	0	13	7e
6726	Thurman fine sandy loam, 11 to 30 percent slopes	15.35	4.56	0	27	6e
6605	Bazile loam, 2 to 6 percent slopes	12.21	3.63	6	68	3e
6301	Aowa silt loam, channeled, frequently flooded	10.0	2.97	0	41	6w
3329	Verdel silty clay, 6 to 11 percent slopes	3.48	1.03	0	43	4e
7883	Onawa silty clay, rarely flooded	0.12	0.04	0	60	2w
3336	Verdigre loam, 6 to 11 percent slopes	0.03	0.01	0	50	4e
TOTALS		336.36(*)	100%	9.8	28.54	5.22









(*) Total acres may differ in the second decimal compared to the sum of each acreage soil. This is due to a round error because we only show the acres of each soil with two decimal.

Capability Legend

Increased Limitations and Hazards

Decreased Adaptability and Freedom of Choice Users

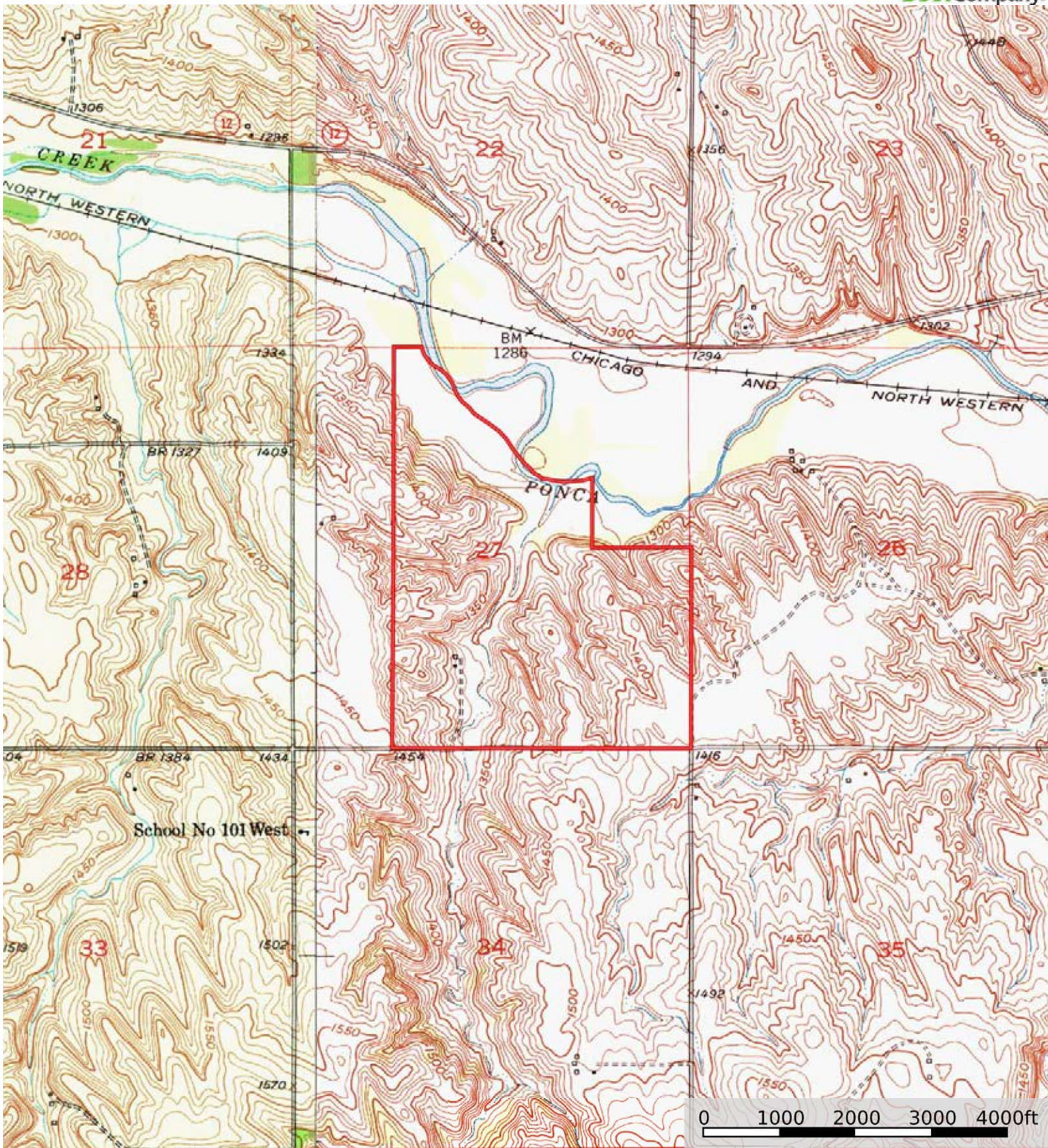
Land, Capability


								
	1	2	3	4	5	6	7	8
'Wild Life'	•	•	•	•	•	•	•	•
Forestry	•	•	•	•	•	•	•	
Limited	•	•	•	•	•	•	•	
Moderate	•	•	•	•	•	•		
Intense	•	•	•	•	•			
Limited	•	•	•	•				
Moderate	•	•	•					
Intense	•	•						
Very Intense	•							

Grazing Cultivation

(c) climatic limitations (e) susceptibility to erosion

(s) soil limitations within the rooting zone (w) excess of water



 Boundary