

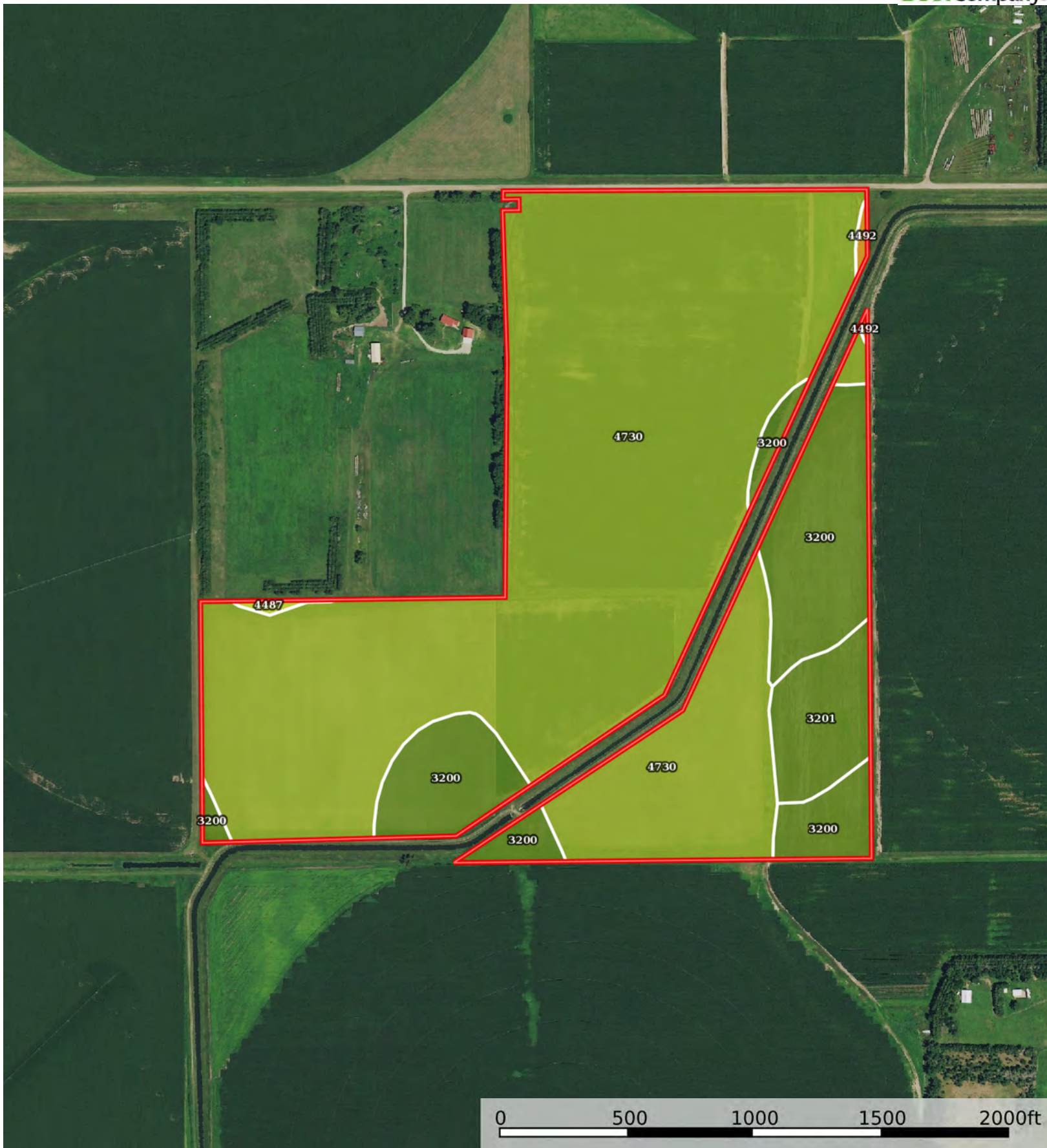
 Boundary

L-2300277

Brown County, Nebraska, 107.53 AC +/-



 Boundary



 Boundary

|  All Polygons 107.17 ac

SOIL CODE	SOIL DESCRIPTION	ACRES	%	CPI	NCCPI	CAP
4730	Sandose loamy fine sand, 0 to 3 percent slopes	84.34	78.71	0	41	3e
3200	Johnstown fine sandy loam, 0 to 2 percent slopes	17.56	16.39	0	61	2e
3201	Johnstown loam, 0 to 2 percent slopes	4.74	4.42	0	56	2c
4492	Dunday loamy fine sand, 3 to 9 percent slopes, moist	0.28	0.26	0	34	6e
4487	Dunday loamy fine sand, 0 to 3 percent slopes, moist	0.25	0.23	0	34	4e
TOTALS		107.17(*)	100%	-	44.91	2.8

(*) Total acres may differ in the second decimal compared to the sum of each acreage soil. This is due to a round error because we only show the acres of each soil with two decimal.

|  Boundary 77.7 ac

SOIL CODE	SOIL DESCRIPTION	ACRES	%	CPI	NCCPI	CAP
4730	Sandose loamy fine sand, 0 to 3 percent slopes	71.35	91.83	0	41	3e
3200	Johnstown fine sandy loam, 0 to 2 percent slopes	5.88	7.57	0	61	2e
4487	Dunday loamy fine sand, 0 to 3 percent slopes, moist	0.25	0.32	0	34	4e
4492	Dunday loamy fine sand, 3 to 9 percent slopes, moist	0.22	0.28	0	34	6e
TOTALS		77.7(*)	100%	-	42.47	2.94

(*) Total acres may differ in the second decimal compared to the sum of each acreage soil. This is due to a round error because we only show the acres of each soil with two decimal.

|  Boundary 29.47 ac

SOIL CODE	SOIL DESCRIPTION	ACRES	%	CPI	NCCPI	CAP
4730	Sandose loamy fine sand, 0 to 3 percent slopes	12.99	44.11	0	41	3e
3200	Johnstown fine sandy loam, 0 to 2 percent slopes	11.68	39.66	0	61	2e
3201	Johnstown loam, 0 to 2 percent slopes	4.74	16.1	0	56	2c
4492	Dunday loamy fine sand, 3 to 9 percent slopes, moist	0.06	0.2	0	34	6e
TOTALS		29.47(*)	100%	-	51.36	2.45









(*) Total acres may differ in the second decimal compared to the sum of each acreage soil. This is due to a round error because we only show the acres of each soil with two decimal.

Capability Legend

Increased Limitations and Hazards

Decreased Adaptability and Freedom of Choice Users

Land, Capability

								
	1	2	3	4	5	6	7	8
'Wild Life'	•	•	•	•	•	•	•	•
Forestry	•	•	•	•	•	•	•	
Limited	•	•	•	•	•	•	•	
Moderate	•	•	•	•	•	•		
Intense	•	•	•	•	•			
Limited	•	•	•	•				
Moderate	•	•	•					
Intense	•	•						
Very Intense	•							

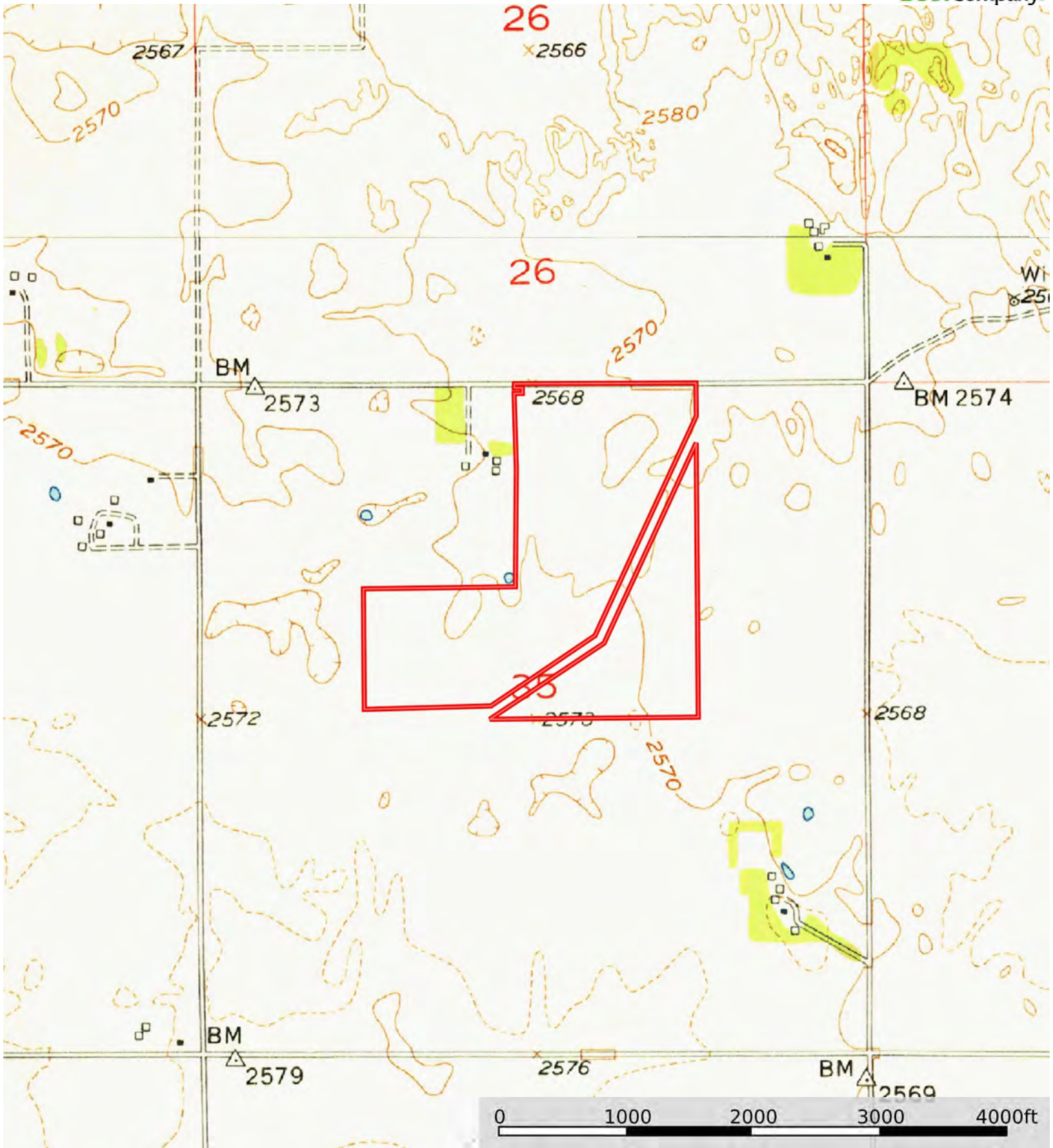
Grazing Cultivation

(c) climatic limitations (e) susceptibility to erosion

(s) soil limitations within the rooting zone (w) excess of water

L-2300277

Brown County, Nebraska, 107.53 AC +/-



 Boundary