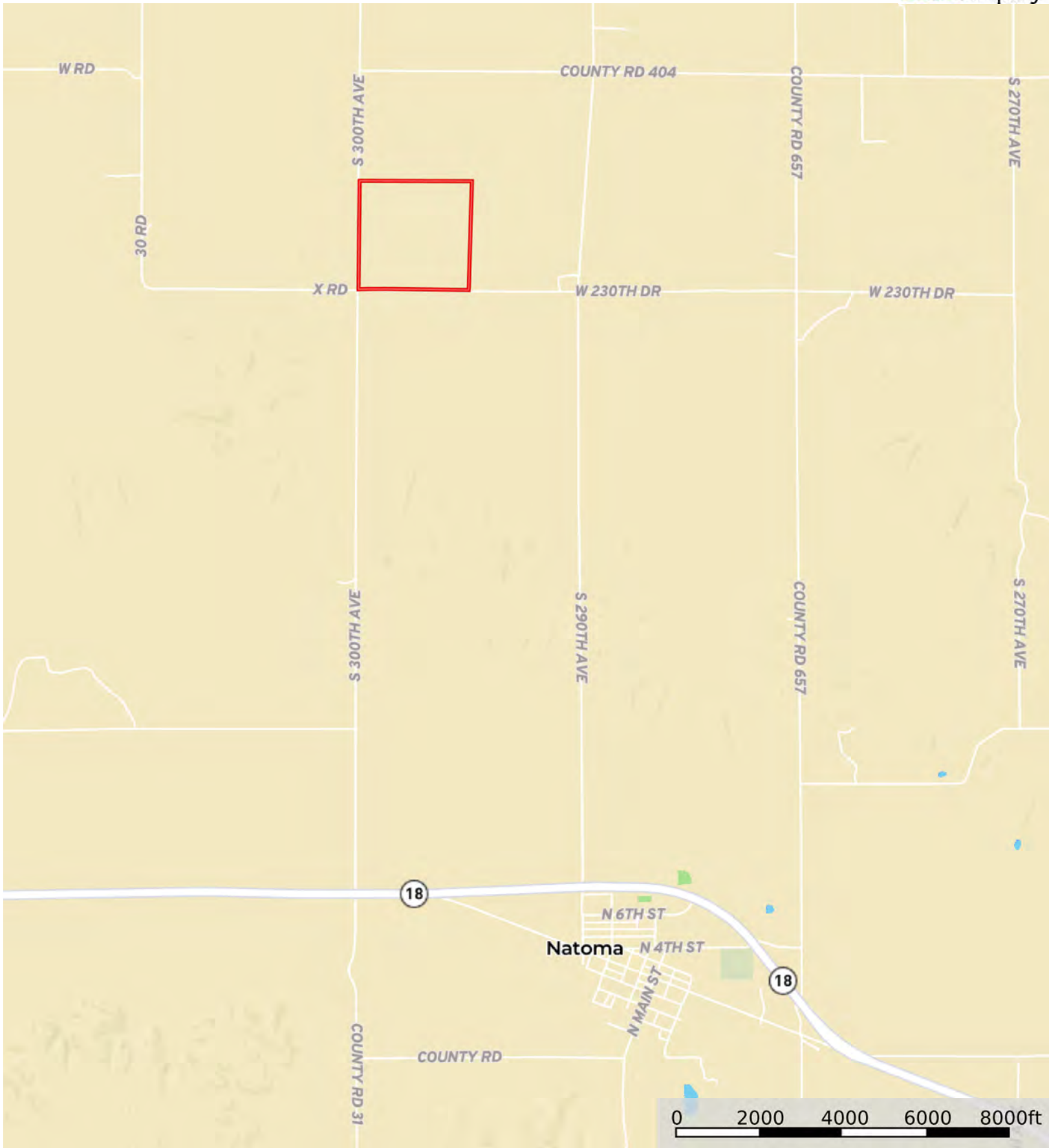


L-2300304

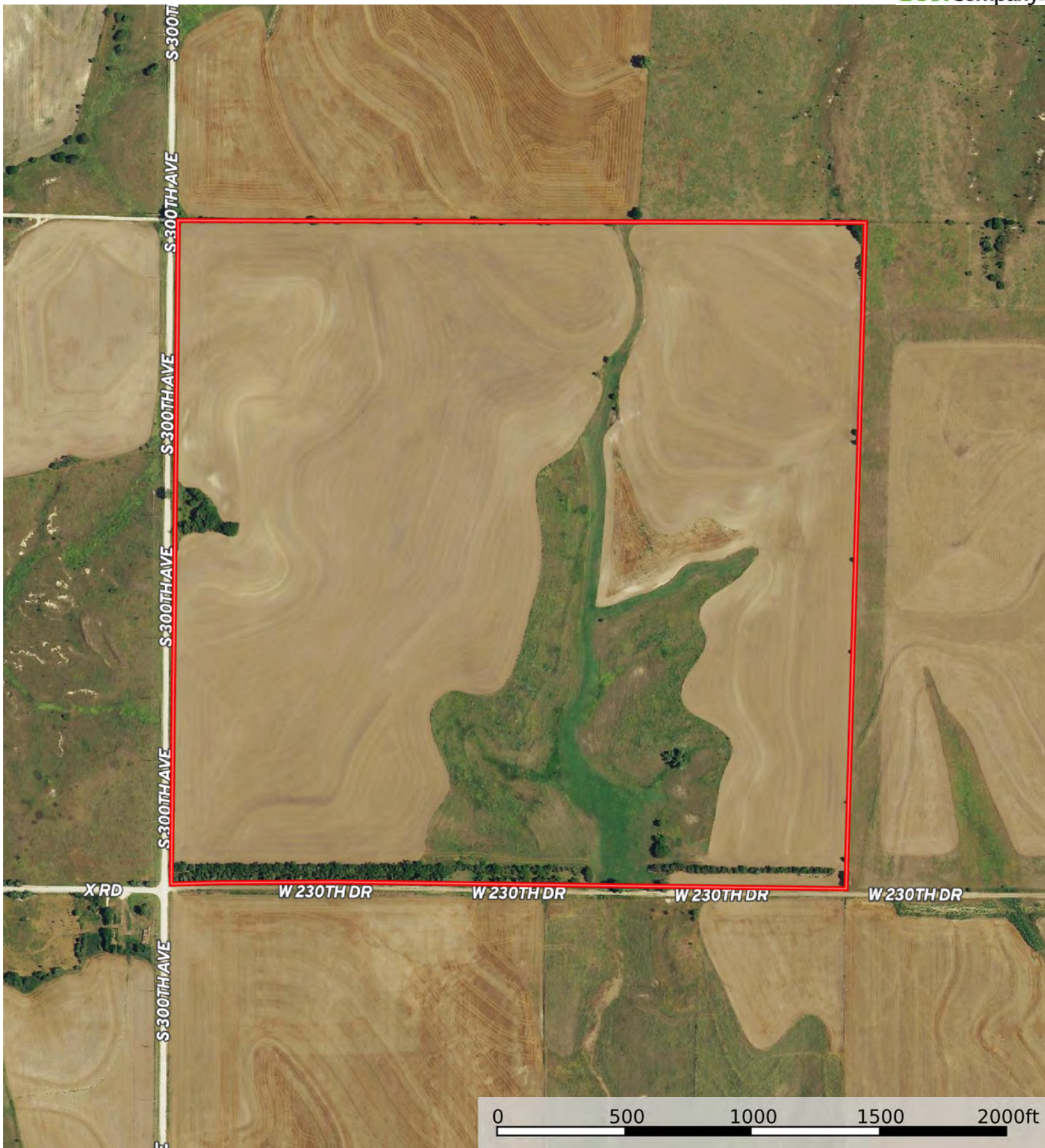
Osborne County, Kansas, 160 AC +/-




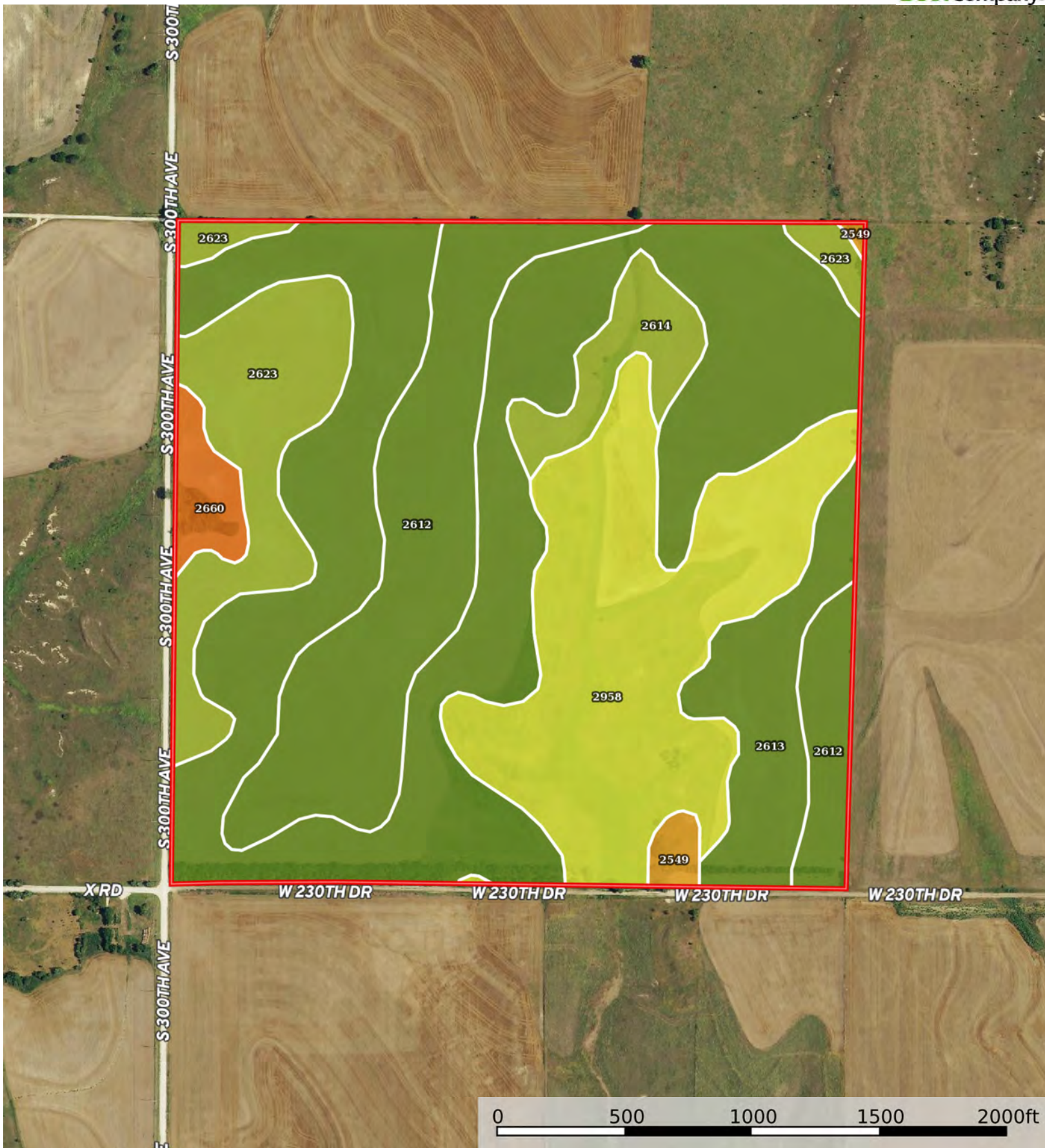
Boundary

L-2300304

Osborne County, Kansas, 160 AC +/-



 Boundary



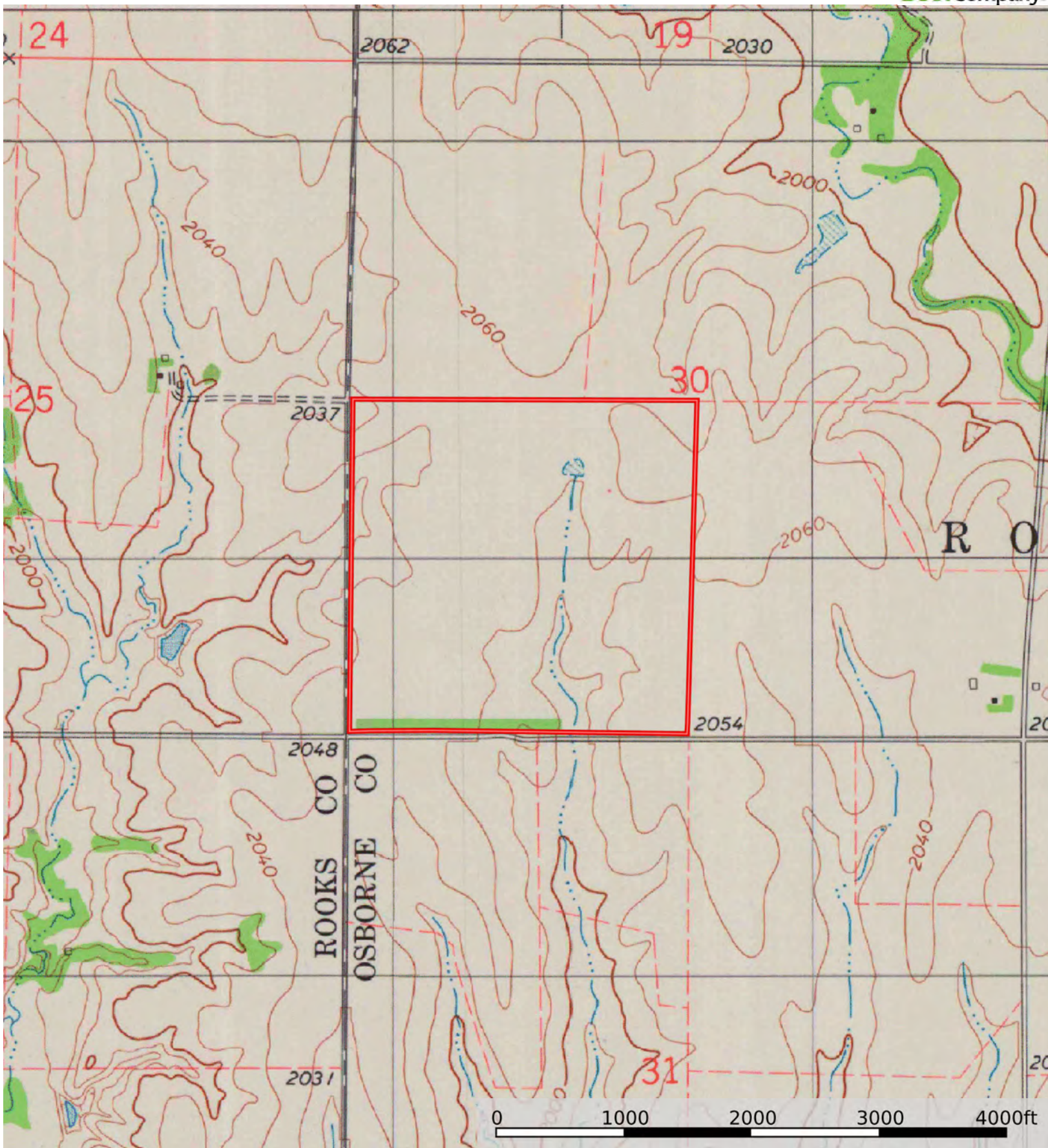
 Boundary


Boundary 159.8 ac

SOIL CODE	SOIL DESCRIPTION	ACRES	%	CPI	NCCPI	CAP
2613	Harney silt loam, 1 to 3 percent slopes	70.72	44.26	0	70	2e
2958	Wakeen-Mento complex, 3 to 7 percent slopes	34.42	21.54	0	50	4e
2612	Harney silt loam, 0 to 1 percent slopes	28.51	17.84	0	71	2c
2623	Harney-Mento complex, 3 to 7 percent slopes	15.93	9.97	0	66	3e
2614	Harney silt loam, 3 to 7 percent slopes	5.67	3.55	0	69	3e
2660	Heizer-Brownell complex, 5 to 30 percent slopes	3.15	1.97	0	18	7s
2549	Brownell-Wakeen complex, 8 to 20 percent slopes	1.4	0.88	0	32	6e
TOTALS		159.8(*)	100%	-	64.08	2.7

(*) Total acres may differ in the second decimal compared to the sum of each acreage soil. This is due to a round error because we only show the acres of each soil with two decimal.





 Boundary