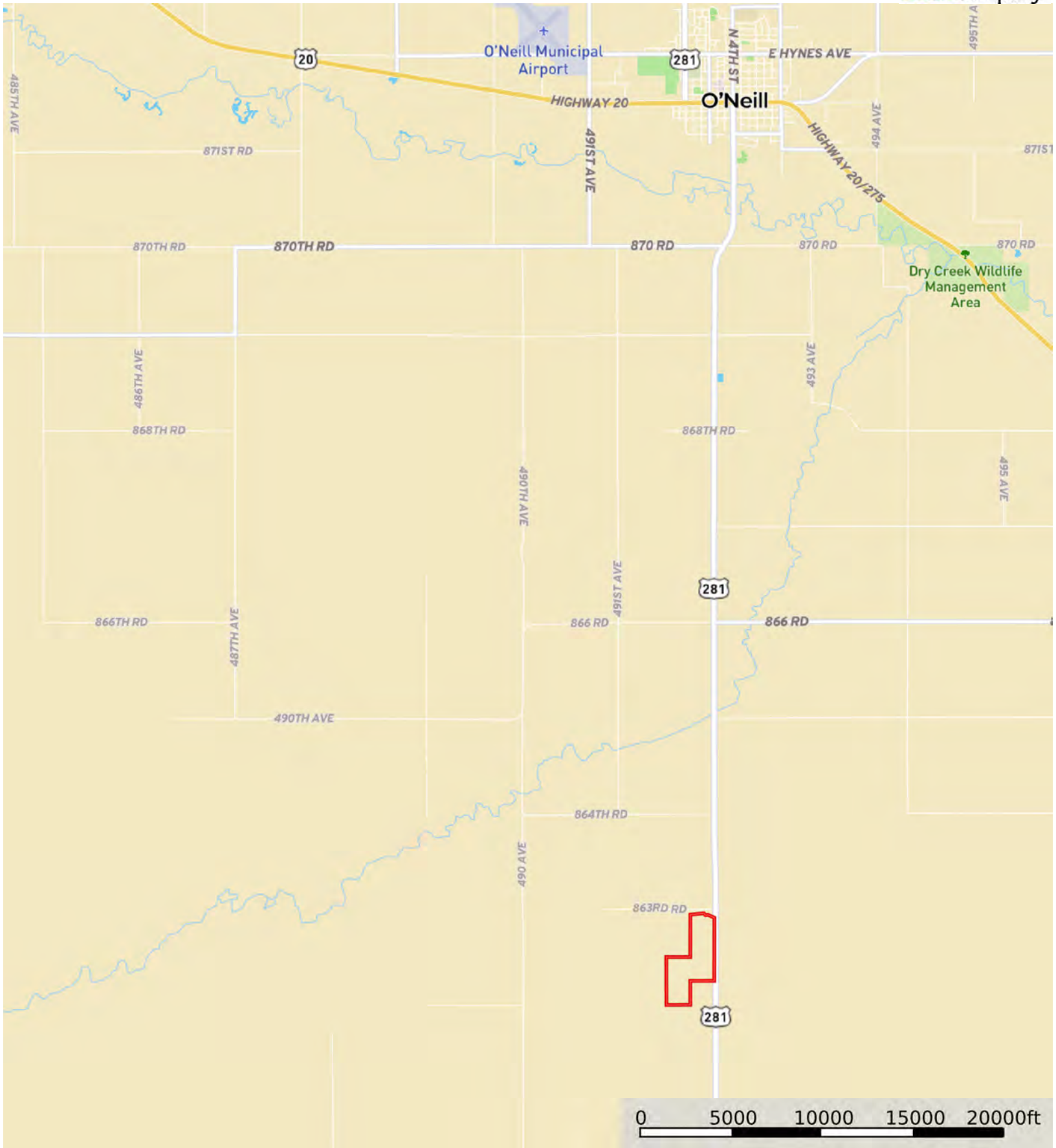
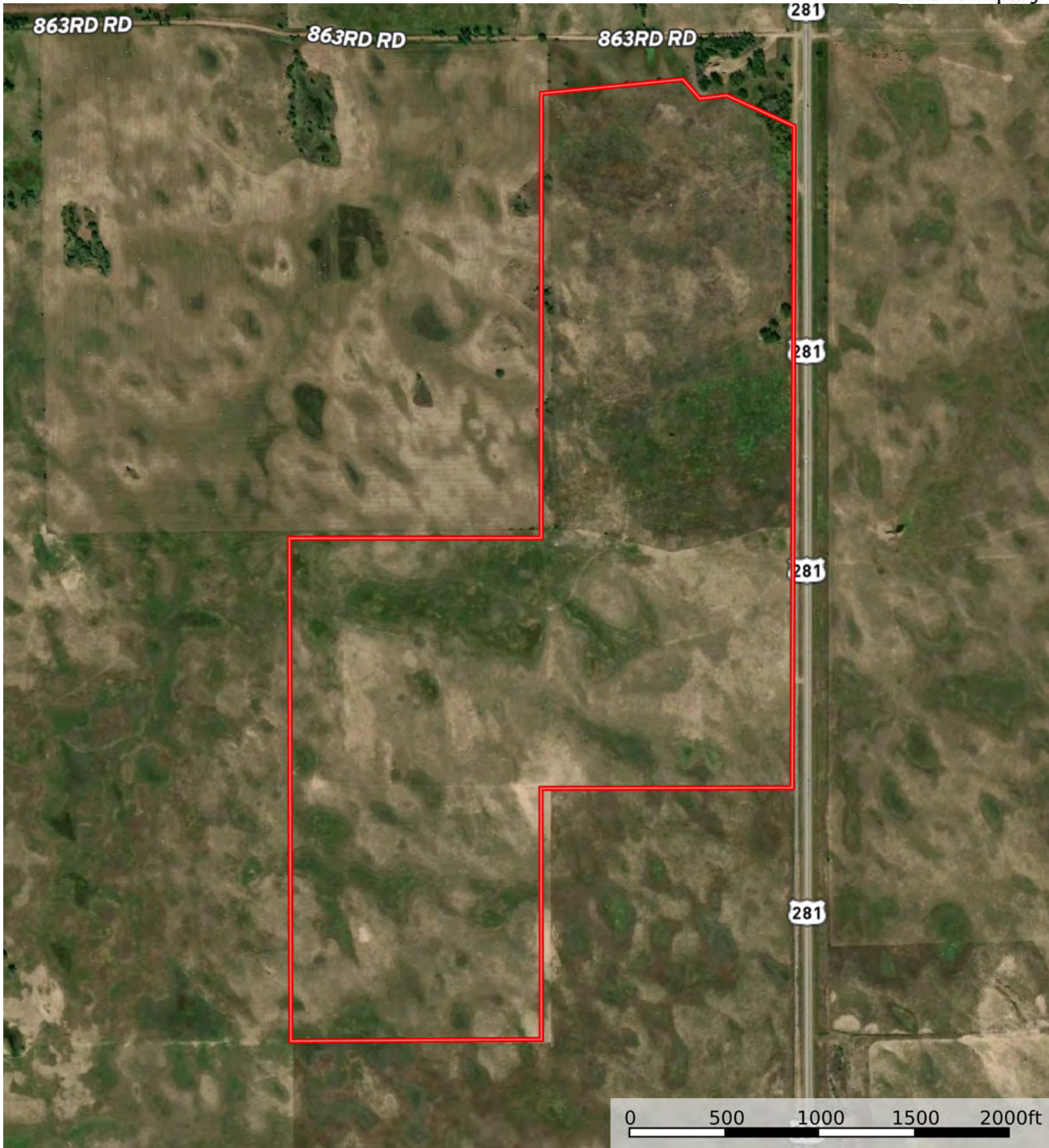


L-2300312

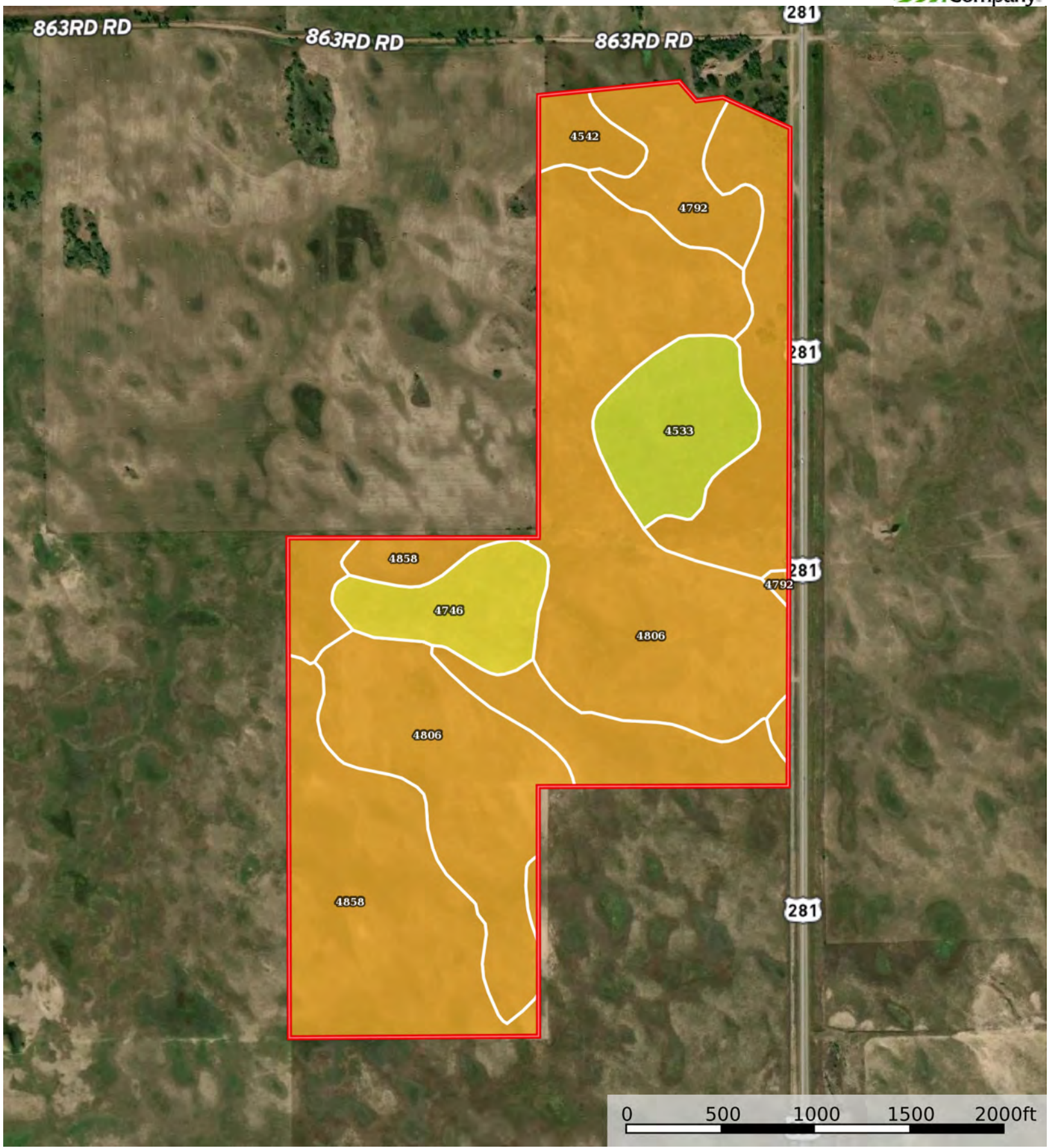
Holt County, Nebraska, 191.02 AC +/-



 Boundary



 Boundary



 Boundary

|  Boundary 191.28 ac

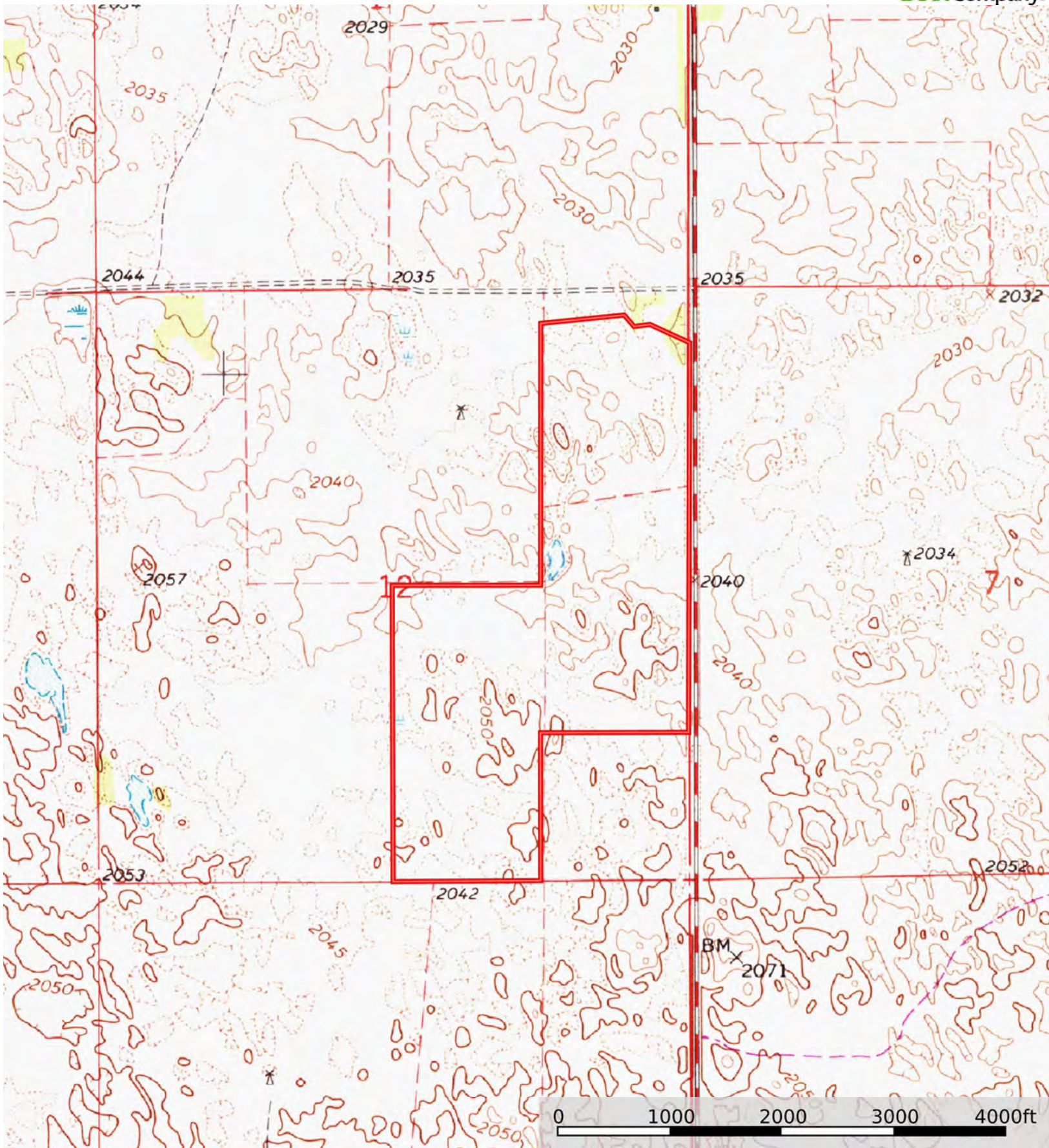
SOIL CODE	SOIL DESCRIPTION	ACRES	%	CPI	NCCPI	CAP
4806	Valentine fine sand, rolling, 9 to 24 percent slopes, moist	80.3	41.98	0	22	6e
4858	Valentine-Els complex, moist, 0 to 9 percent slopes	48.52	25.37	0	27	6e
4542	Els-lpage complex, 0 to 3 percent slopes	26.58	13.9	0	19	6w
4533	Els loamy sand, 0 to 3 percent slopes	13.77	7.2	0	21	4w
4792	Valentine fine sand, 3 to 9 percent slopes, moist	11.1	5.8	0	31	6e
4746	Tryon loamy fine sand, 0 to 3 percent slopes	11.01	5.76	0	17	5w
TOTALS		191.28(*)	100%	-	23.01	5.8


(*) Total acres may differ in the second decimal compared to the sum of each acreage soil. This is due to a round error because we only show the acres of each soil with two decimal.



L-2300312

Holt County, Nebraska, 191.02 AC +/-



 Boundary