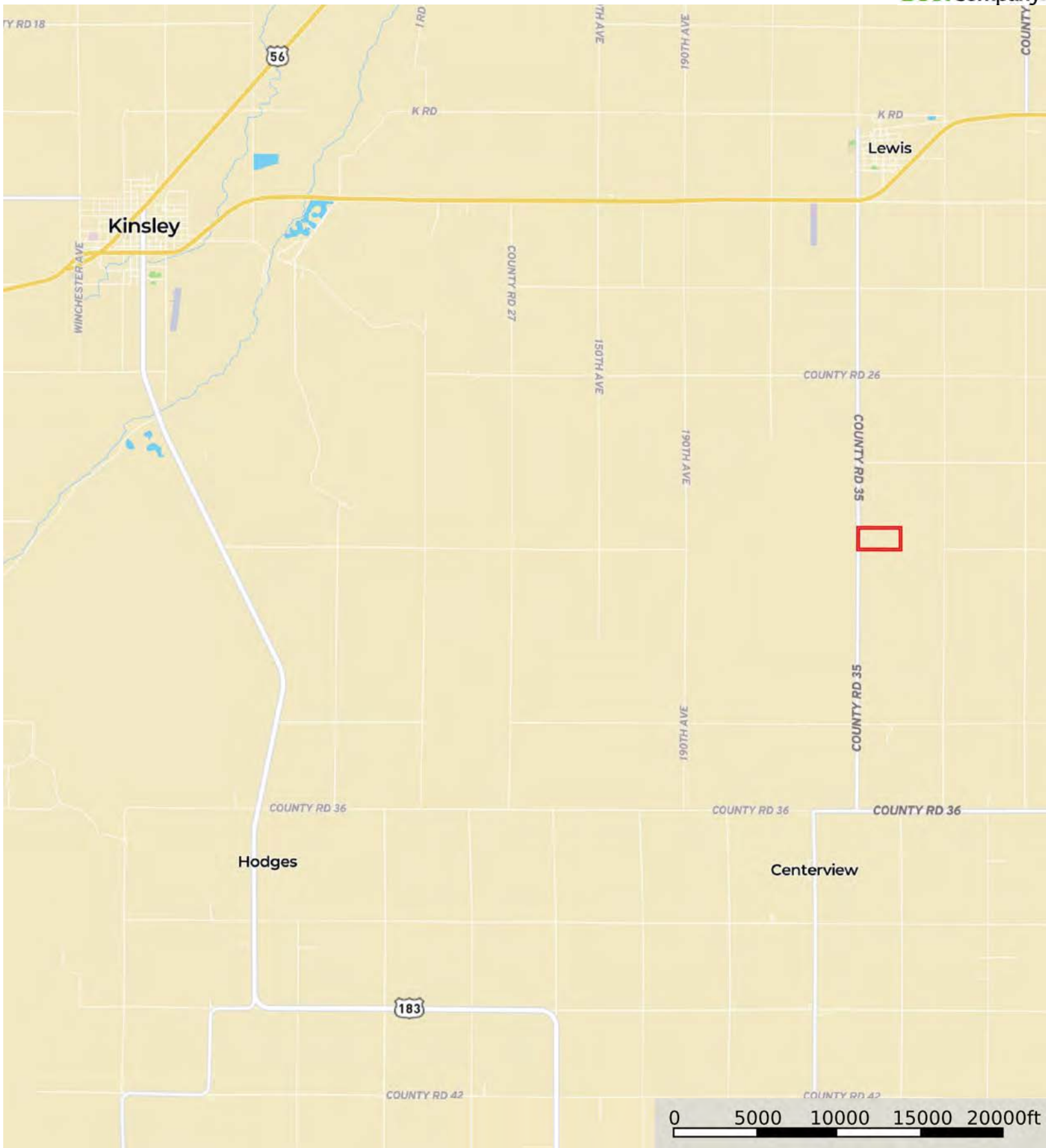


L-2300316

Edwards County, Kansas, 79 AC +/-



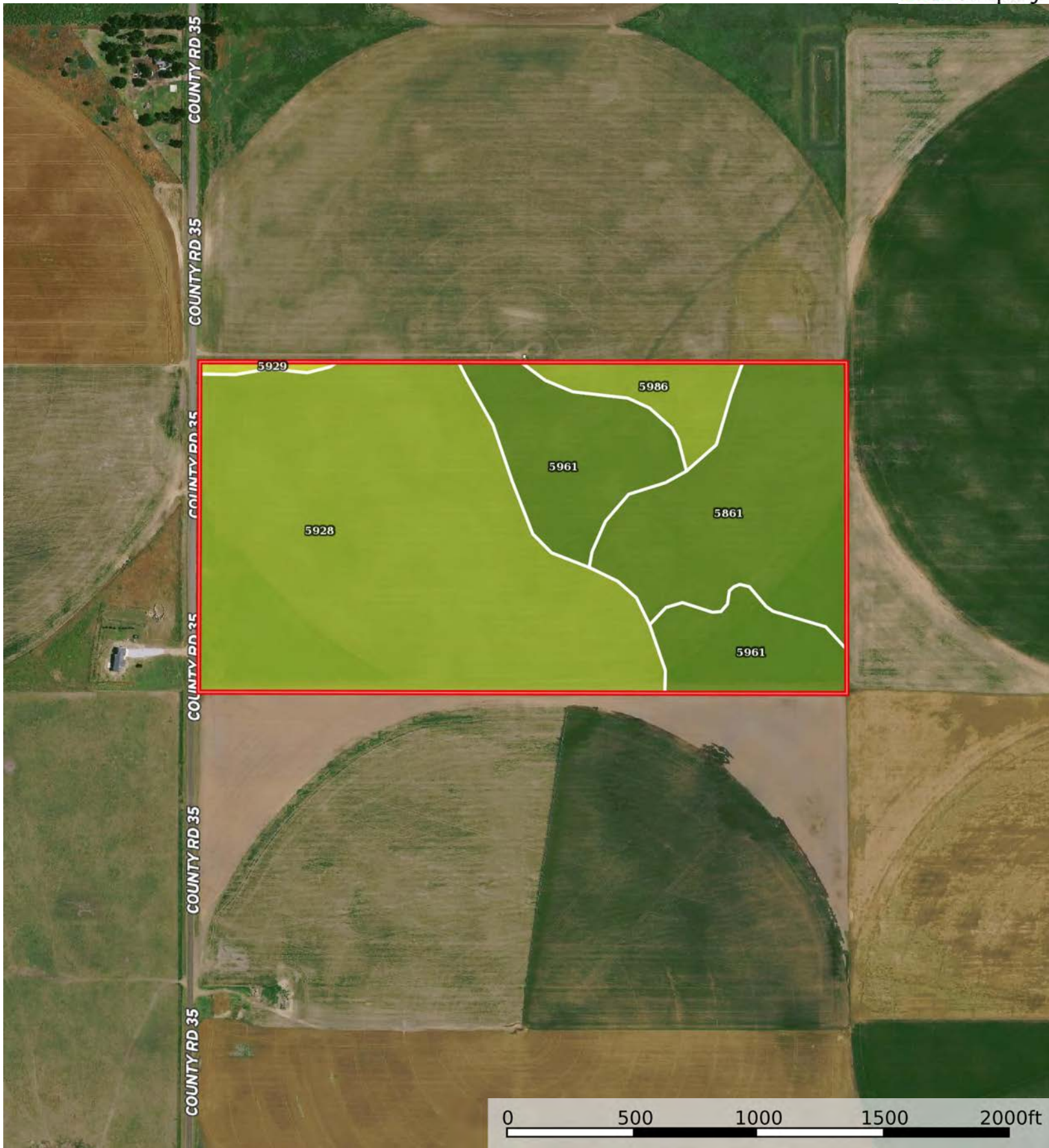
 Boundary



 Boundary

L-2300316

Edwards County, Kansas, 79 AC +/-



 Boundary

Boundary 78.32 ac

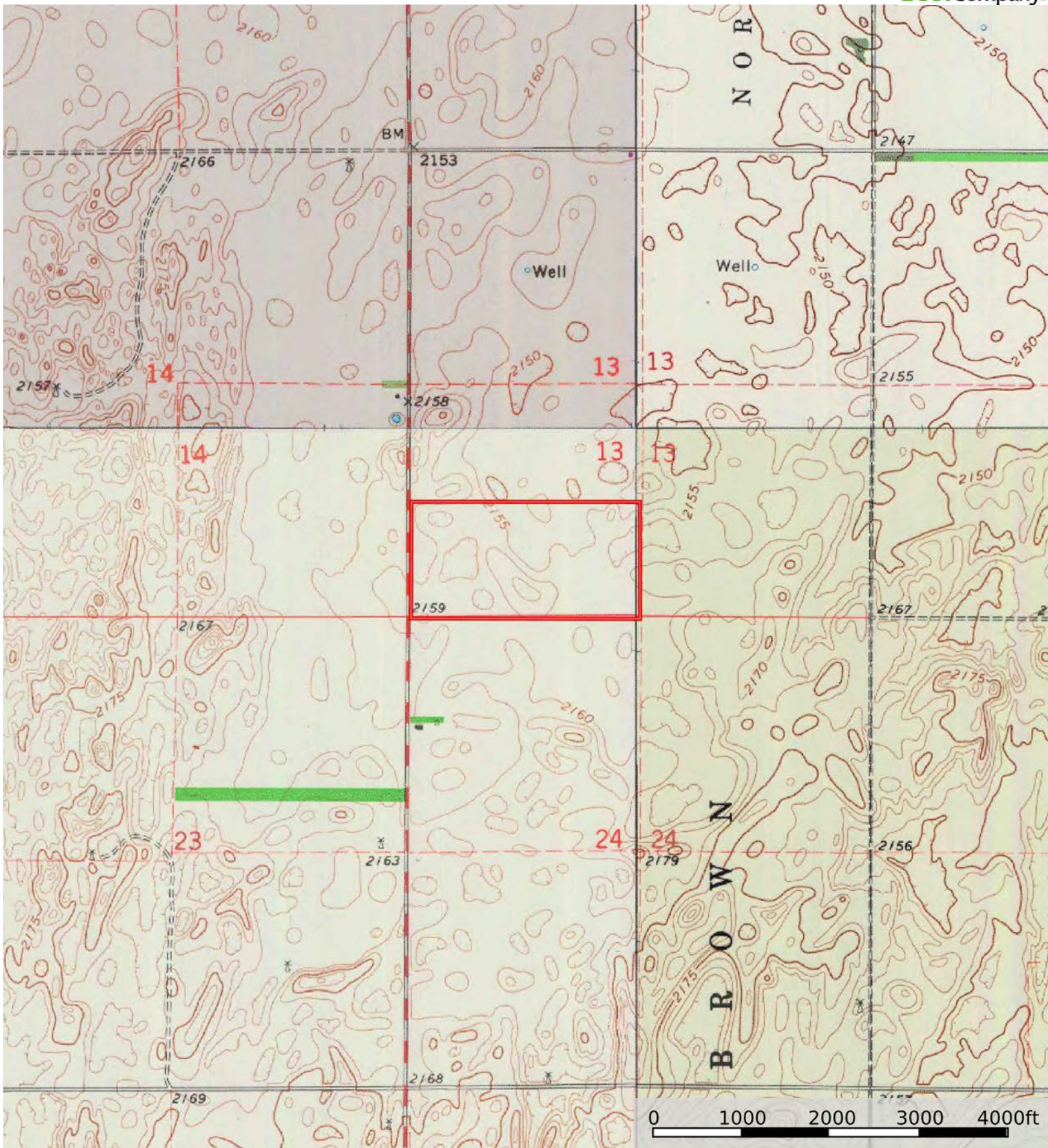
SOIL CODE	SOIL DESCRIPTION	ACRES	%	CPI	NCCPI	CAP
5928	Pratt loamy fine sand, 1 to 5 percent slopes	43.16	55.11	0	32	3e
5861	Attica fine sandy loam, 1 to 3 percent slopes	16.62	21.22	0	51	2e
5961	Solvay loamy fine sand, 0 to 2 percent slopes	14.43	18.42	0	50	2e
5986	Attica-Solvay complex, 0 to 3 percent slopes	3.63	4.63	0	48	3e
5929	Pratt loamy fine sand, 5 to 12 percent slopes	0.48	0.61	0	32	4e
TOTALS		78.32(*)	100%	-	40.09	2.61

(\*) Total acres may differ in the second decimal compared to the sum of each acreage soil. This is due to a round error because we only show the acres of each soil with two decimal.



L-2300316

Edwards County, Kansas, 79 AC +/-



Boundary