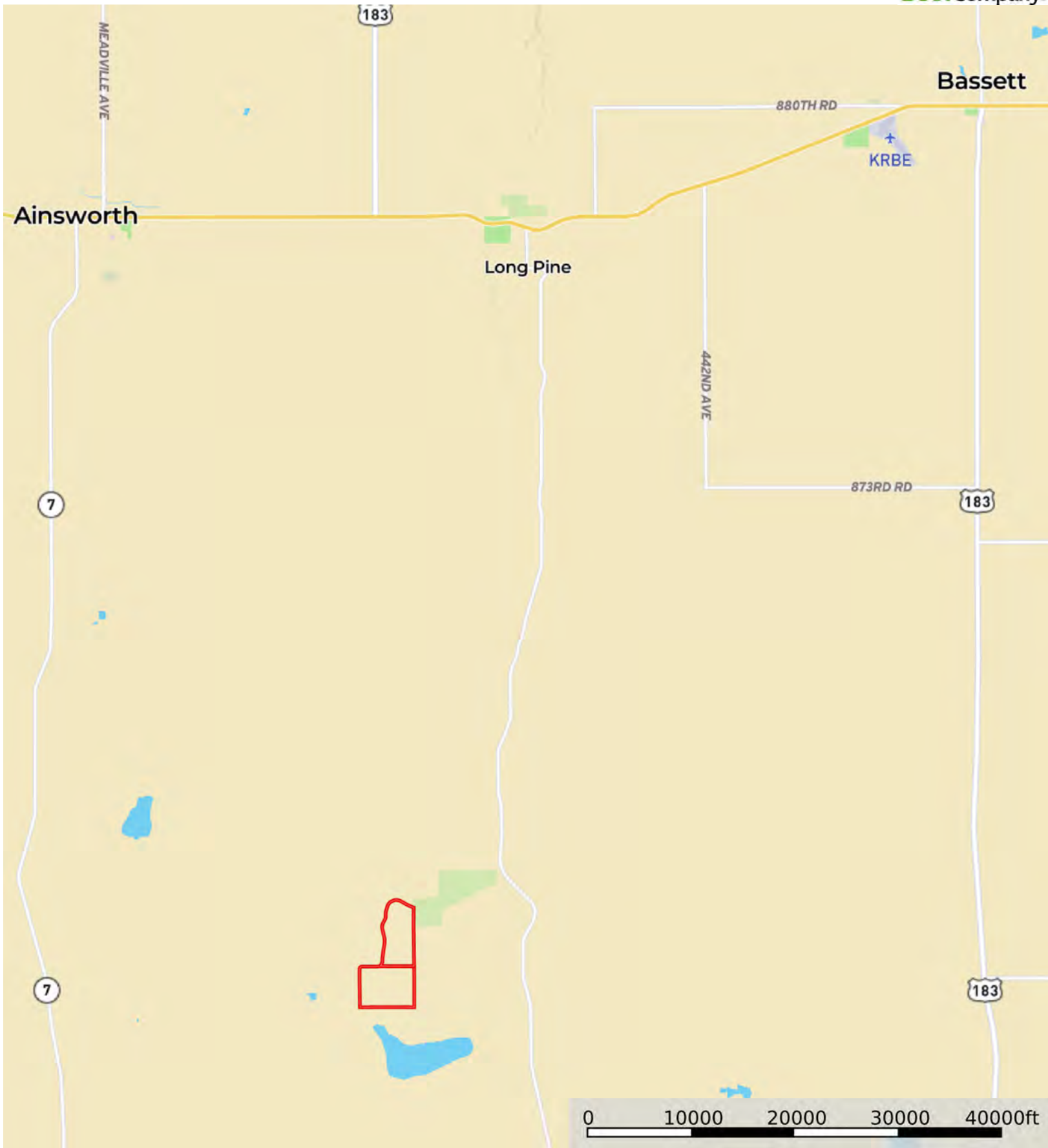


L-2300322

Brown County, Nebraska, 888 AC +/-



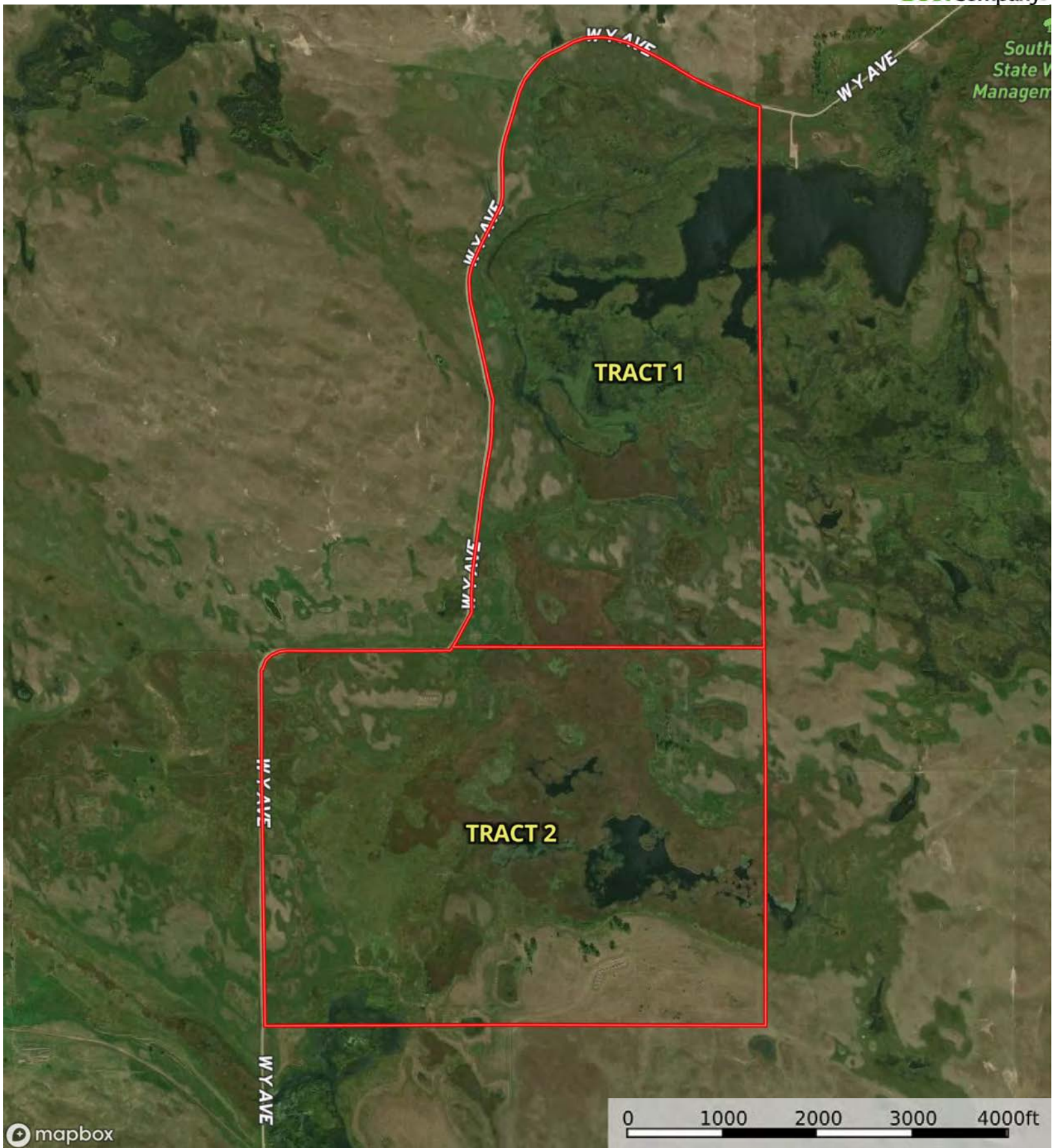
 Boundary

L-2300322

Brown County, Nebraska, 888 AC +/-



South  
State V  
Managem

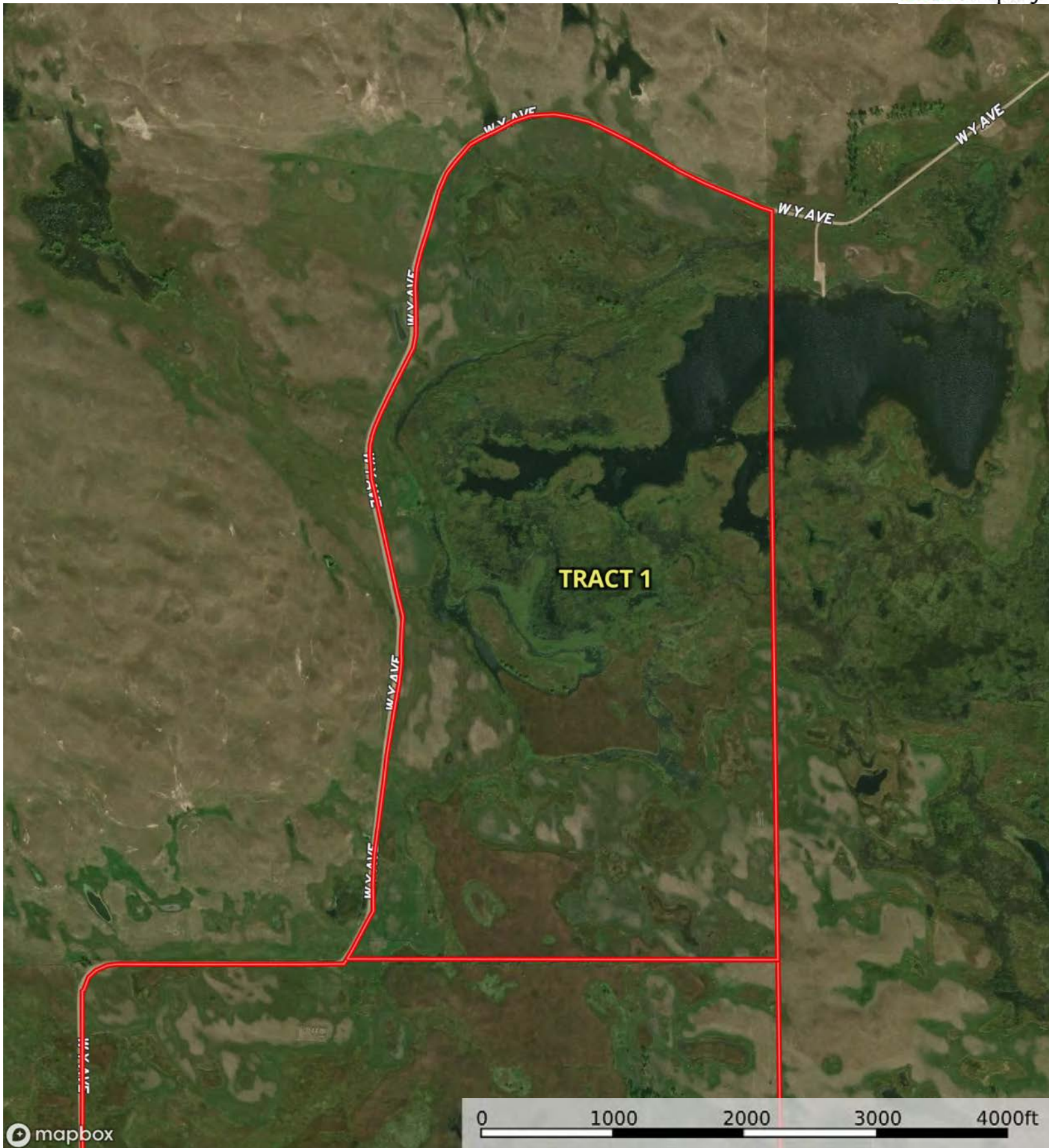



Boundary



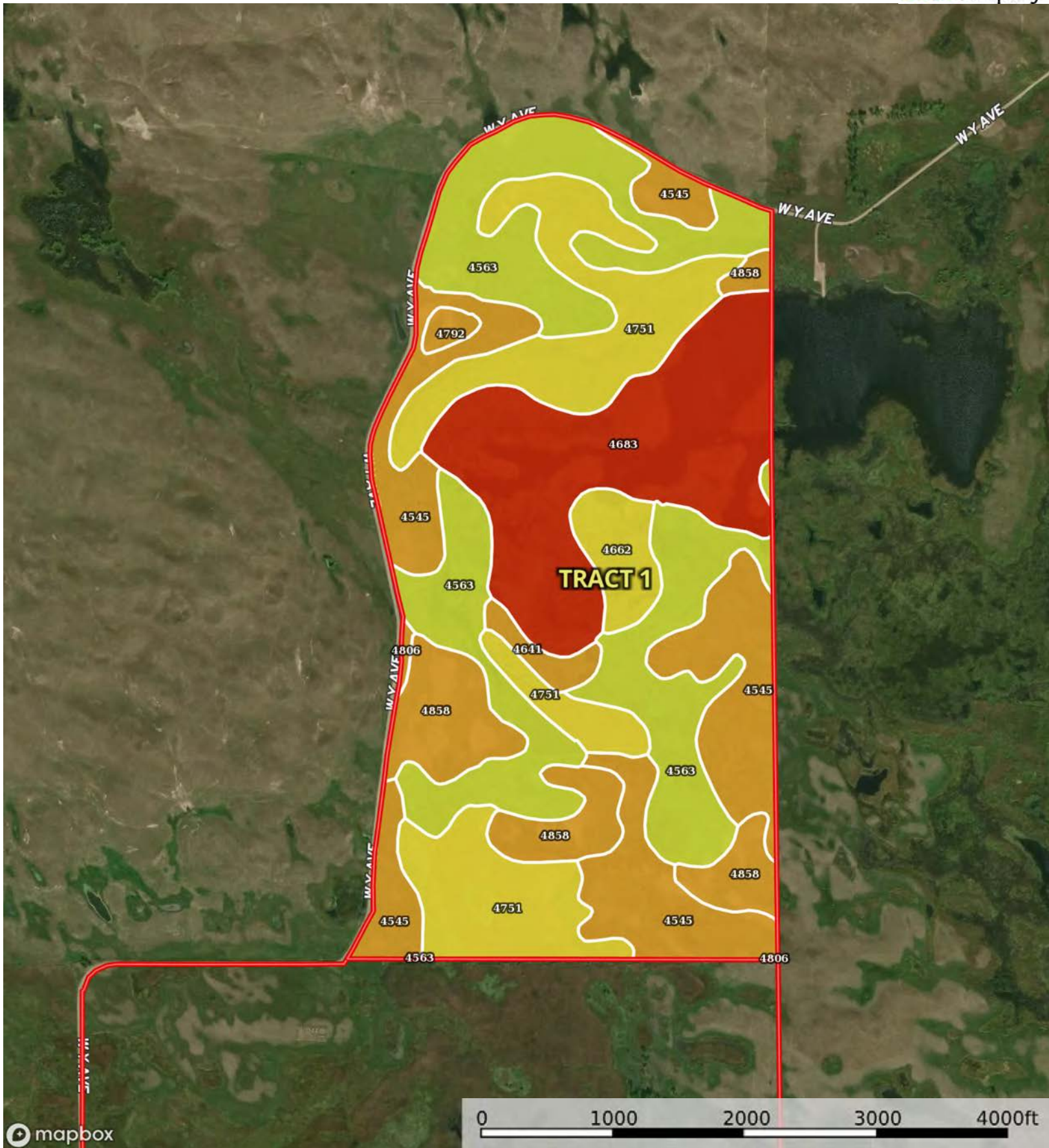
The information contained herein was obtained from sources deemed to be reliable. Land id™ Services makes no warranties or guarantees as to the completeness or accuracy thereof.






 Boundary





 Boundary

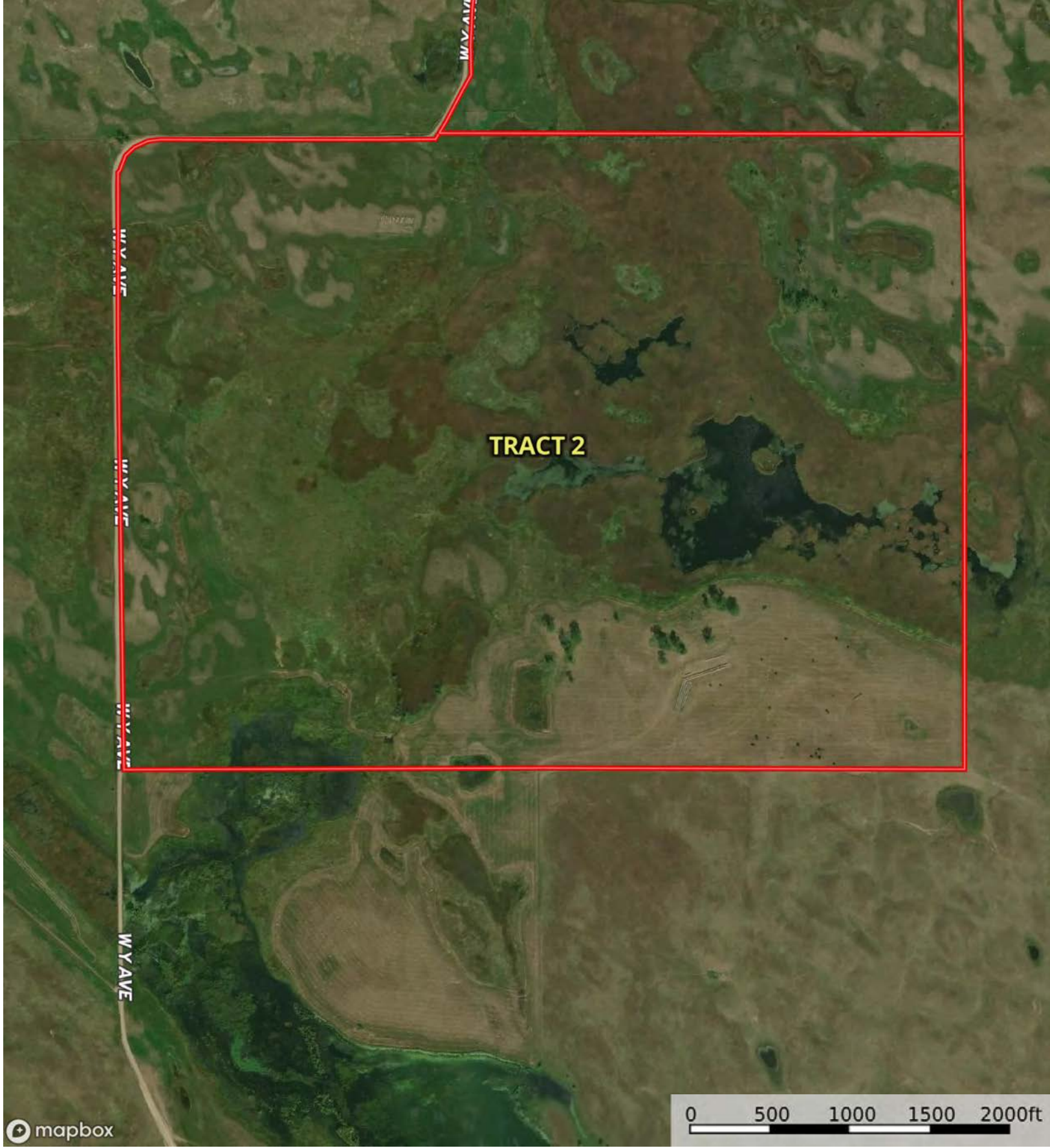
Boundary 406.21 ac

SOIL CODE	SOIL DESCRIPTION	ACRES	%	CPI	NCCPI	CAP
4563	Els-Tryon complex, 0 to 3 percent slopes	110.56	27.22	21	20	4w
4545	Els-lpage fine sands, 0 to 3 percent slopes	82.16	20.23	38	19	6w
4683	Marlake fine sandy loam, frequently ponded	78.84	19.41	5	1	8w
4751	Tryon loamy fine sand, frequently ponded, 0 to 3 percent slopes	77.82	19.16	0	5	5w
4858	Valentine-Els complex, moist, 0 to 9 percent slopes	37.42	9.21	0	27	6e
4662	Loup fine sandy loam, 0 to 1 percent slopes	11.47	2.82	30	19	5w
4641	lpage fine sand, 0 to 3 percent slopes	4.78	1.18	53	18	6e
4792	Valentine fine sand, 3 to 9 percent slopes, moist	2.33	0.57	0	31	6e
4806	Valentine fine sand, rolling, 9 to 24 percent slopes, moist	0.83	0.2	0	22	6e
TOTALS		406.21(*)	100%	15.84	13.9	5.62

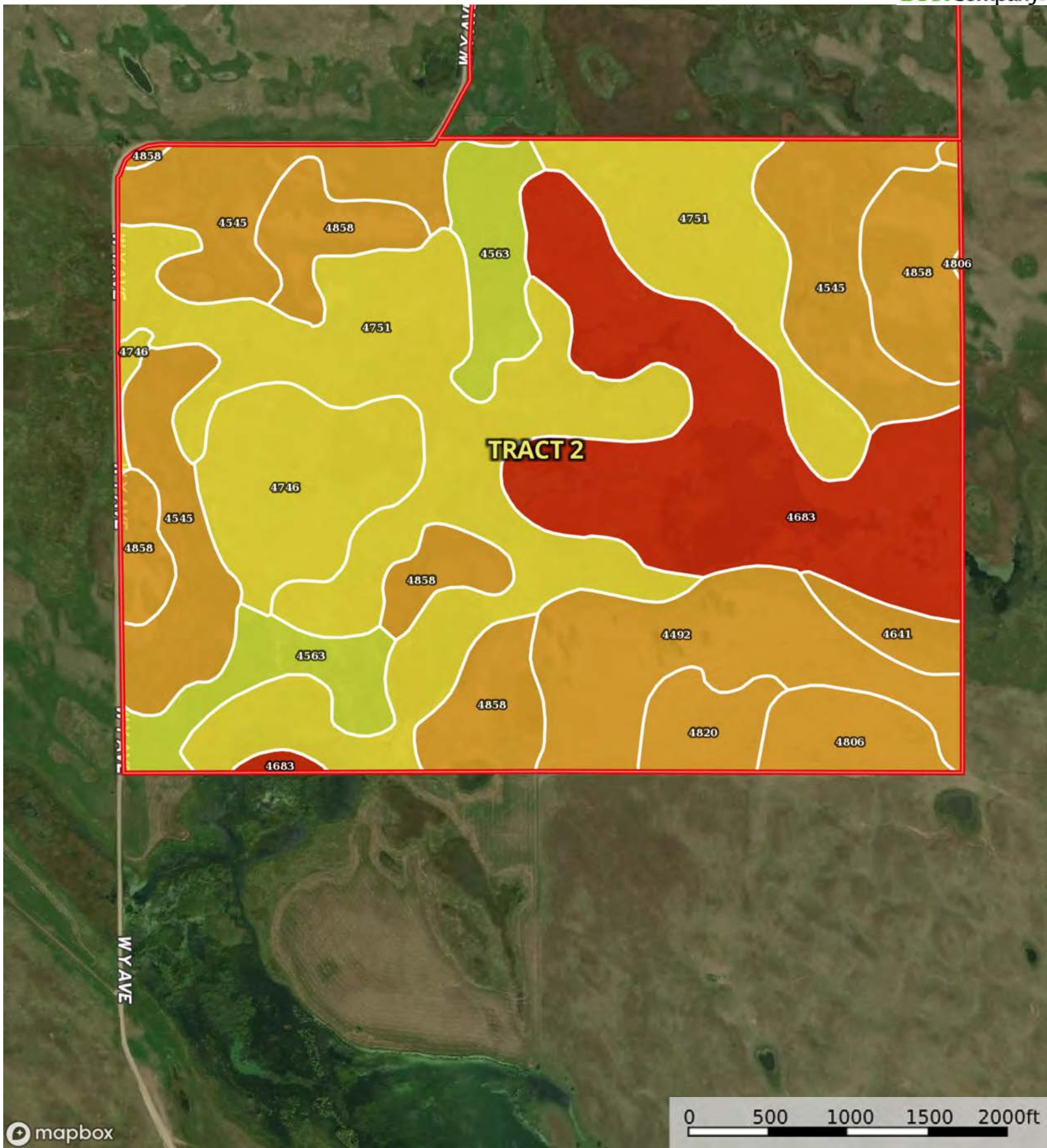
(\*) Total acres may differ in the second decimal compared to the sum of each acreage soil. This is due to a round error because we only show the acres of each soil with two decimal.












 Boundary

|  Boundary 481.59 ac

SOIL CODE	SOIL DESCRIPTION	ACRES	%	CPI	NCCPI	CAP
4751	Tryon loamy fine sand, frequently ponded, 0 to 3 percent slopes	136.8 5	28.42	0	5	5w
4683	Marlake fine sandy loam, frequently ponded	81.98	17.02	5	1	8w
4545	Els-lpage fine sands, 0 to 3 percent slopes	73.56	15.27	38	19	6w
4858	Valentine-Els complex, moist, 0 to 9 percent slopes	54.89	11.4	0	27	6e
4492	Dunday loamy fine sand, 3 to 9 percent slopes, moist	40.58	8.43	0	34	6e
4746	Tryon loamy fine sand, 0 to 3 percent slopes	33.24	6.9	0	17	5w
4563	Els-Tryon complex, 0 to 3 percent slopes	30.94	6.42	21	20	4w
4806	Valentine fine sand, rolling, 9 to 24 percent slopes, moist	12.62	2.62	0	22	6e
4820	Valentine loamy fine sand, 3 to 9 percent slopes, moist	10.29	2.14	0	31	6e
4641	lpage fine sand, 0 to 3 percent slopes	6.64	1.38	53	18	6e
TOTALS		481.5 9(*)	100%	8.74	14.38	5.86

(\*) Total acres may differ in the second decimal compared to the sum of each acreage soil. This is due to a round error because we only show the acres of each soil with two decimal.











## Capability Legend

Increased Limitations and Hazards

Decreased Adaptability and Freedom of Choice Users

Land, Capability

								
	1	2	3	4	5	6	7	8
'Wild Life'	•	•	•	•	•	•	•	•
Forestry	•	•	•	•	•	•	•	
Limited	•	•	•	•	•	•	•	
Moderate	•	•	•	•	•	•		
Intense	•	•	•	•	•			
Limited	•	•	•	•				
Moderate	•	•	•					
Intense	•	•						
Very Intense	•							

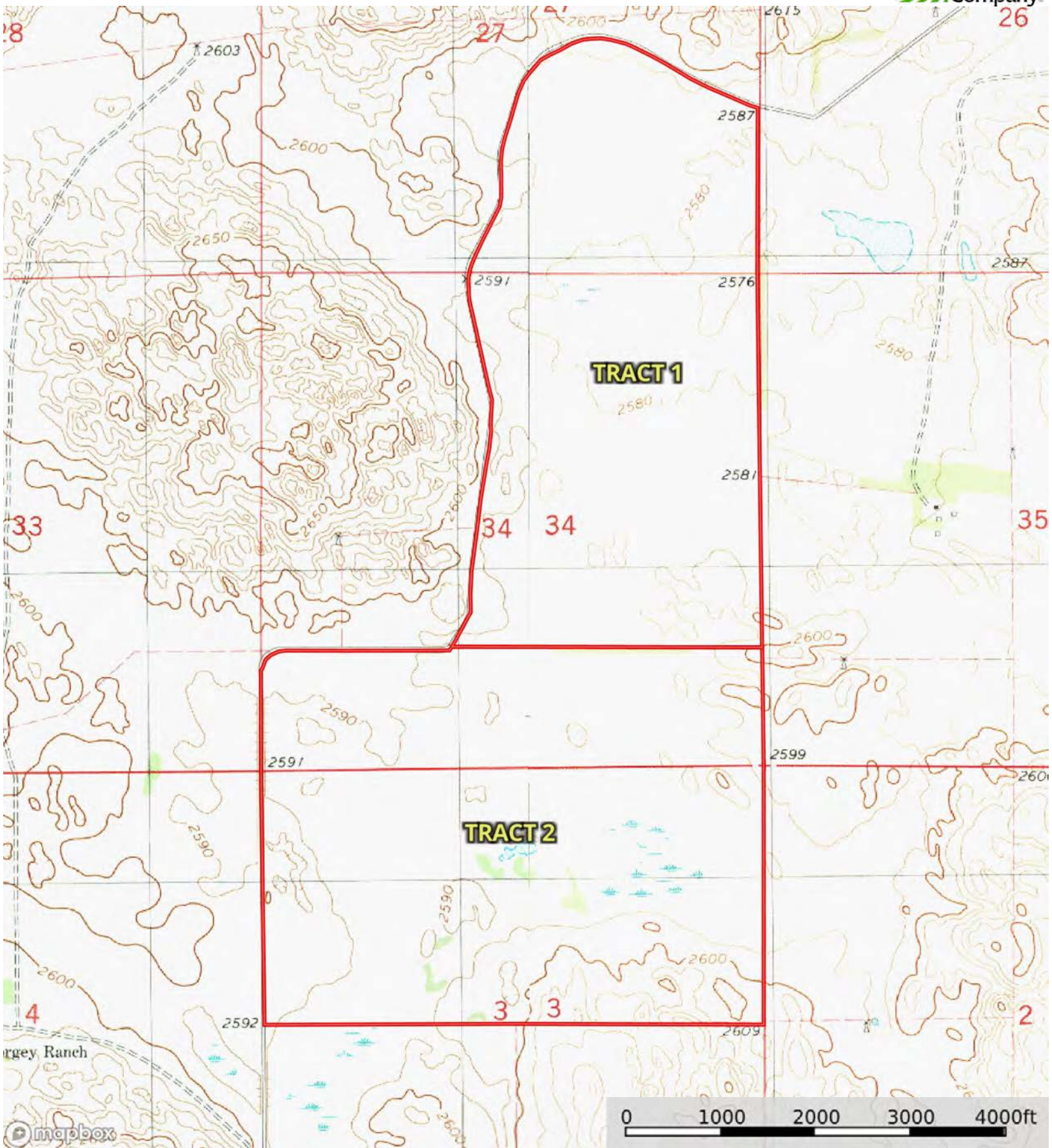
### Grazing Cultivation

(c) climatic limitations (e) susceptibility to erosion

(s) soil limitations within the rooting zone (w) excess of water

L-2300322

Brown County, Nebraska, 888 AC +/-



Boundary