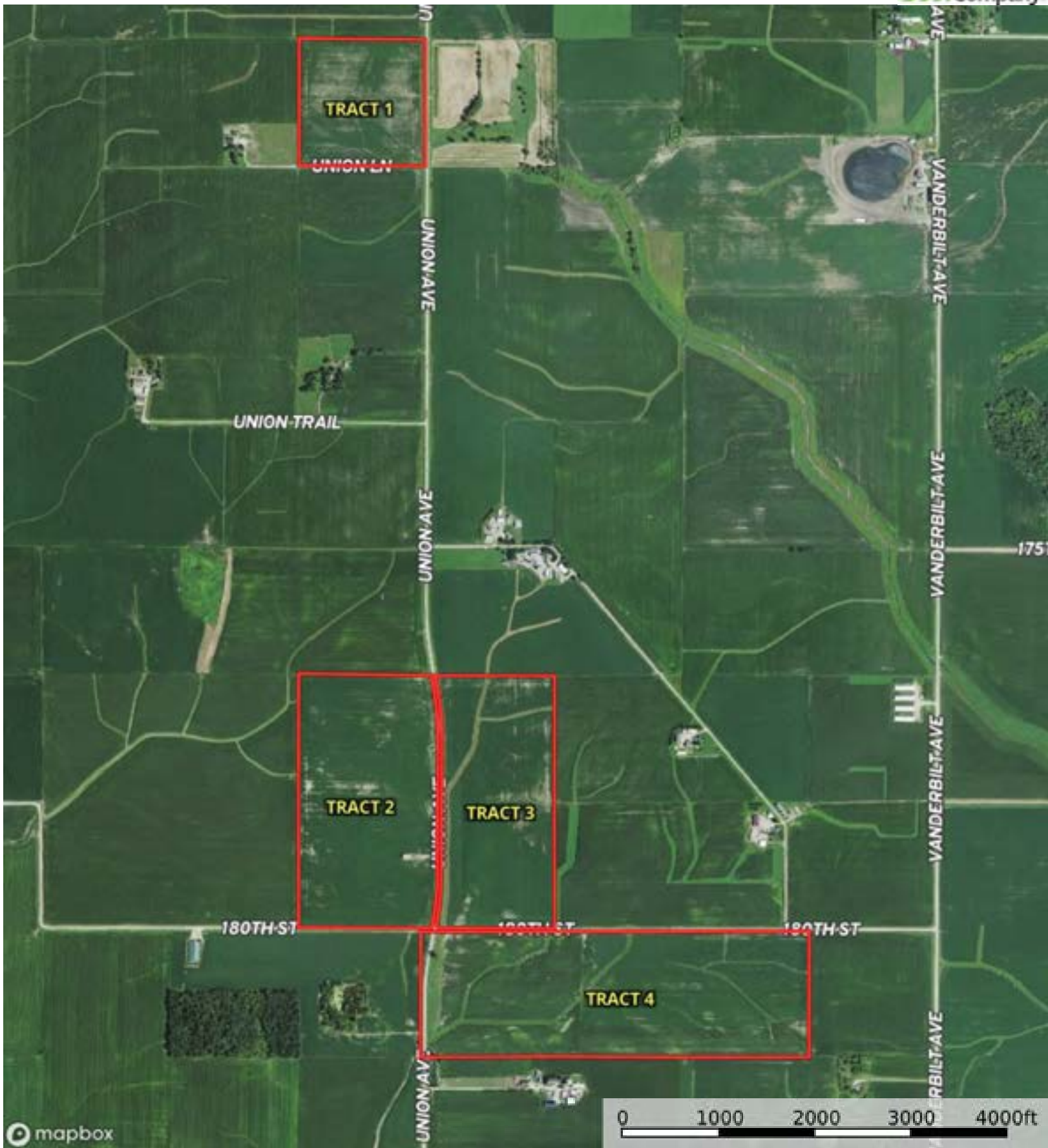
 Boundary

L-2300330

Chickasaw County, Iowa, 307.76 AC +/-



mapbox

Boundary

L-2300330

Chickasaw County, Iowa, 307.76 AC +/-



Boundary

L-2300330

Chickasaw County, Iowa, 307.76 AC +/-



Boundary

|  Boundary 39.58 ac

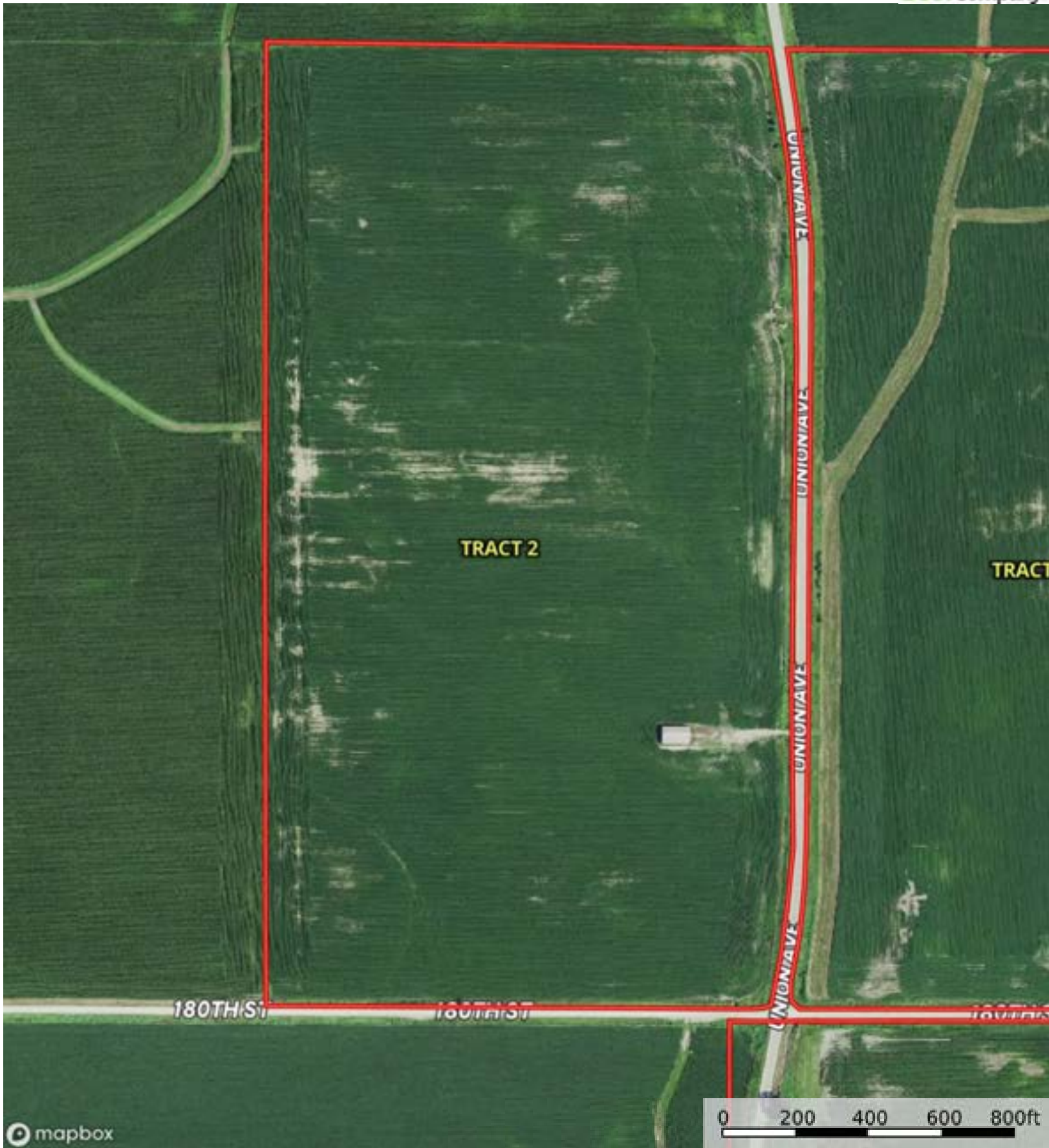
SOIL CODE	SOIL DESCRIPTION	ACRES	%	CSR2	CPI	NCCPI	CAP
84	Clyde clay loam, 0 to 3 percent slopes	16.49	41.65	88.0	0	91	2w
399	Readlyn silt loam, 1 to 3 percent slopes	10.56	26.67	91.0	0	79	1
783B	Cresco loam, 2 to 5 percent slopes	6.81	17.2	73.0	0	76	2e
198B	Floyd loam, 1 to 4 percent slopes	5.72	14.45	89.0	0	88	2w
TOTALS		39.58(*)	100%	86.34	-	84.76	1.73


(*) Total acres may differ in the second decimal compared to the sum of each acreage soil. This is due to a round error because we only show the acres of each soil with two decimal.



L-2300330

Chickasaw County, Iowa, 307.76 AC +/-



 Boundary



|  Boundary 87.0 ac

SOIL CODE	SOIL DESCRIPTION	ACRES	%	CSR2	CPI	NCCPI	CAP
407B	Schley loam, 1 to 4 percent slopes	20.92	24.04	81.0	0	95	2w
84	Clyde clay loam, 0 to 3 percent slopes	17.52	20.13	88.0	0	91	2w
198B	Floyd loam, 1 to 4 percent slopes	9.46	10.87	89.0	0	88	2w
399	Readlyn silt loam, 1 to 3 percent slopes	9.11	10.47	91.0	0	79	1
482B	Racine loam, 2 to 5 percent slopes	7.01	8.06	76.0	0	63	2e
391B	Clyde-Floyd complex, 1 to 4 percent slopes	5.94	6.83	87.0	0	89	2w
83B	Kenyon loam, 2 to 5 percent slopes	5.6	6.44	90.0	0	87	2e
171B	Bassett loam, 2 to 5 percent slopes	4.52	5.19	85.0	0	86	2e
1152	Marshan clay loam, 0 to 2 percent slopes, rarely flooded	2.87	3.3	54.0	0	82	2w
177B	Saude loam, 2 to 5 percent slopes	1.28	1.47	55.0	0	77	2s
394B	Ostrander loam, 2 to 5 percent slopes	1.24	1.42	88.0	0	77	2e
798B	Protivin loam, 1 to 4 percent slopes	1.21	1.39	61.0	0	79	2e
471B	Oran loam, 2 to 5 percent slopes	0.32	0.37	74.0	0	77	1
TOTALS		87.0(*)	100%	83.62	-	86.53	1.89









(*) Total acres may differ in the second decimal compared to the sum of each acreage soil. This is due to a round error because we only show the acres of each soil with two decimal.

Capability Legend

Increased Limitations and Hazards

Decreased Adaptability and Freedom of Choice Users

Land, Capability

								
	1	2	3	4	5	6	7	8
'Wild Life'	•	•	•	•	•	•	•	•
Forestry	•	•	•	•	•	•	•	
Limited	•	•	•	•	•	•	•	
Moderate	•	•	•	•	•	•		
Intense	•	•	•	•	•			
Limited	•	•	•	•				
Moderate	•	•	•					
Intense	•	•						
Very Intense	•							

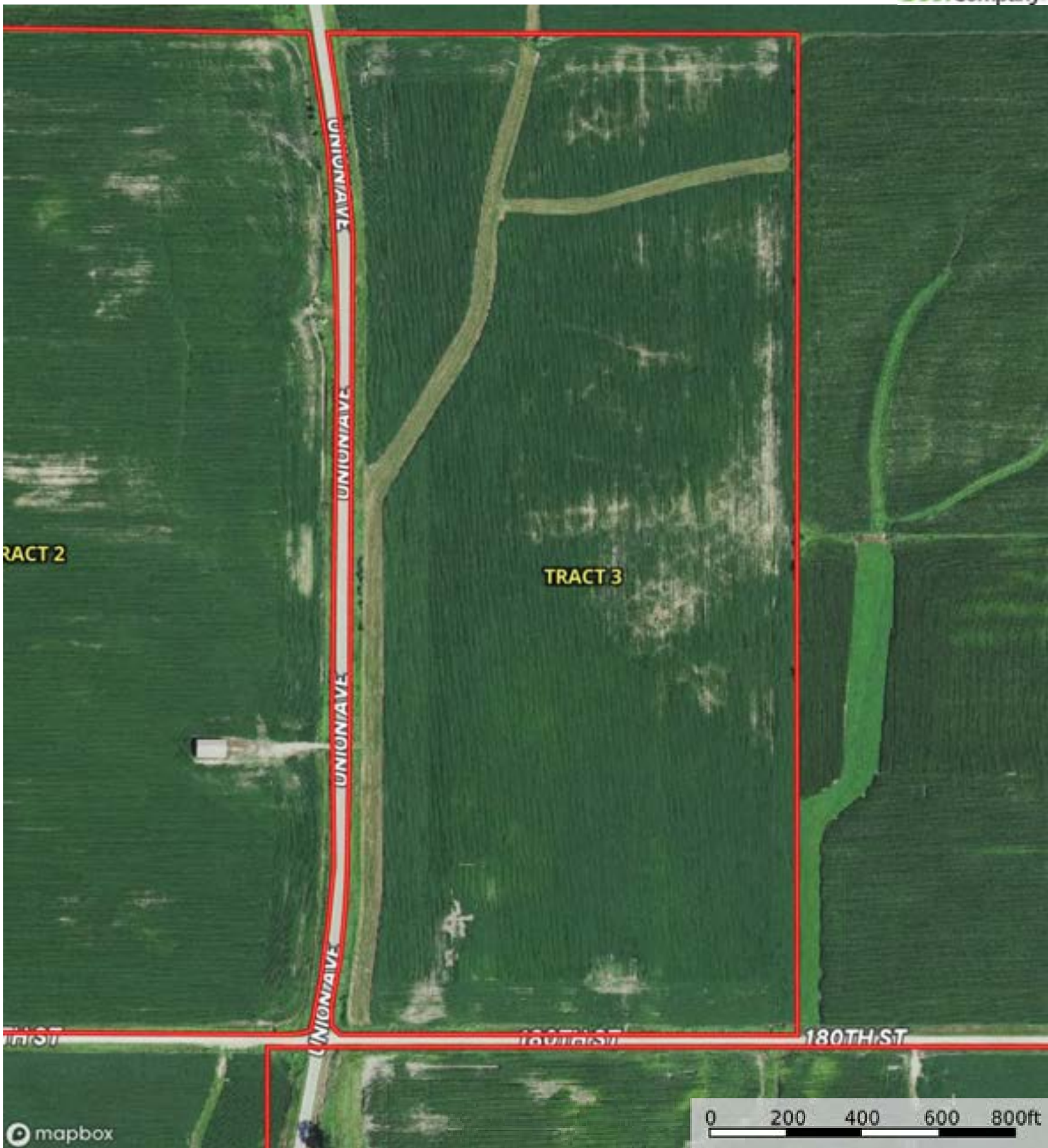
Grazing Cultivation

(c) climatic limitations (e) susceptibility to erosion

(s) soil limitations within the rooting zone (w) excess of water

L-2300330

Chickasaw County, Iowa, 307.76 AC +/-



Boundary

L-2300330

Chickasaw County, Iowa, 307.76 AC +/-



mapbox



Boundary

|  Boundary 71.41 ac

SOIL CODE	SOIL DESCRIPTION	ACRES	%	CSR2	CPI	NCCPI	CAP
84	Clyde clay loam, 0 to 3 percent slopes	21.12	29.58	88.0	0	91	2w
394B	Ostrander loam, 2 to 5 percent slopes	10.82	15.15	88.0	0	77	2e
781B	Lourdes loam, 2 to 5 percent slopes	10.6	14.85	68.0	0	78	2e
783B	Cresco loam, 2 to 5 percent slopes	6.2	8.68	73.0	0	76	2e
798B	Protivin loam, 1 to 4 percent slopes	5.92	8.29	61.0	0	79	2e
1152	Marshan clay loam, 0 to 2 percent slopes, rarely flooded	3.51	4.92	54.0	0	82	2w
285B	Burkhardt sandy loam, 2 to 5 percent slopes	3.46	4.85	18.0	0	48	3e
323B	Fort Dodge loam, 2 to 5 percent slopes	2.6	3.64	79.0	4	96	2e
399	Readlyn silt loam, 1 to 3 percent slopes	2.6	3.64	91.0	0	79	1
783C2	Cresco loam, 5 to 9 percent slopes, moderately eroded	2.18	3.05	78.0	0	81	3e
83C	Kenyon loam, 5 to 9 percent slopes	1.76	2.46	85.0	0	86	3e
177B	Saude loam, 2 to 5 percent slopes	0.36	0.5	55.0	0	77	2s
83B	Kenyon loam, 2 to 5 percent slopes	0.18	0.25	90.0	0	87	2e
1727	Udolpho loam, 0 to 2 percent slopes, rarely flooded	0.1	0.14	48.0	0	78	2w
TOTALS		71.41(*)	100%	75.62	0.15	81.36	2.07









(*) Total acres may differ in the second decimal compared to the sum of each acreage soil. This is due to a round error because we only show the acres of each soil with two decimal.

Capability Legend

Increased Limitations and Hazards

Decreased Adaptability and Freedom of Choice Users

Land, Capability

								
	1	2	3	4	5	6	7	8
'Wild Life'	•	•	•	•	•	•	•	•
Forestry	•	•	•	•	•	•	•	
Limited	•	•	•	•	•	•	•	
Moderate	•	•	•	•	•	•		
Intense	•	•	•	•	•			
Limited	•	•	•	•				
Moderate	•	•	•					
Intense	•	•						
Very Intense	•							

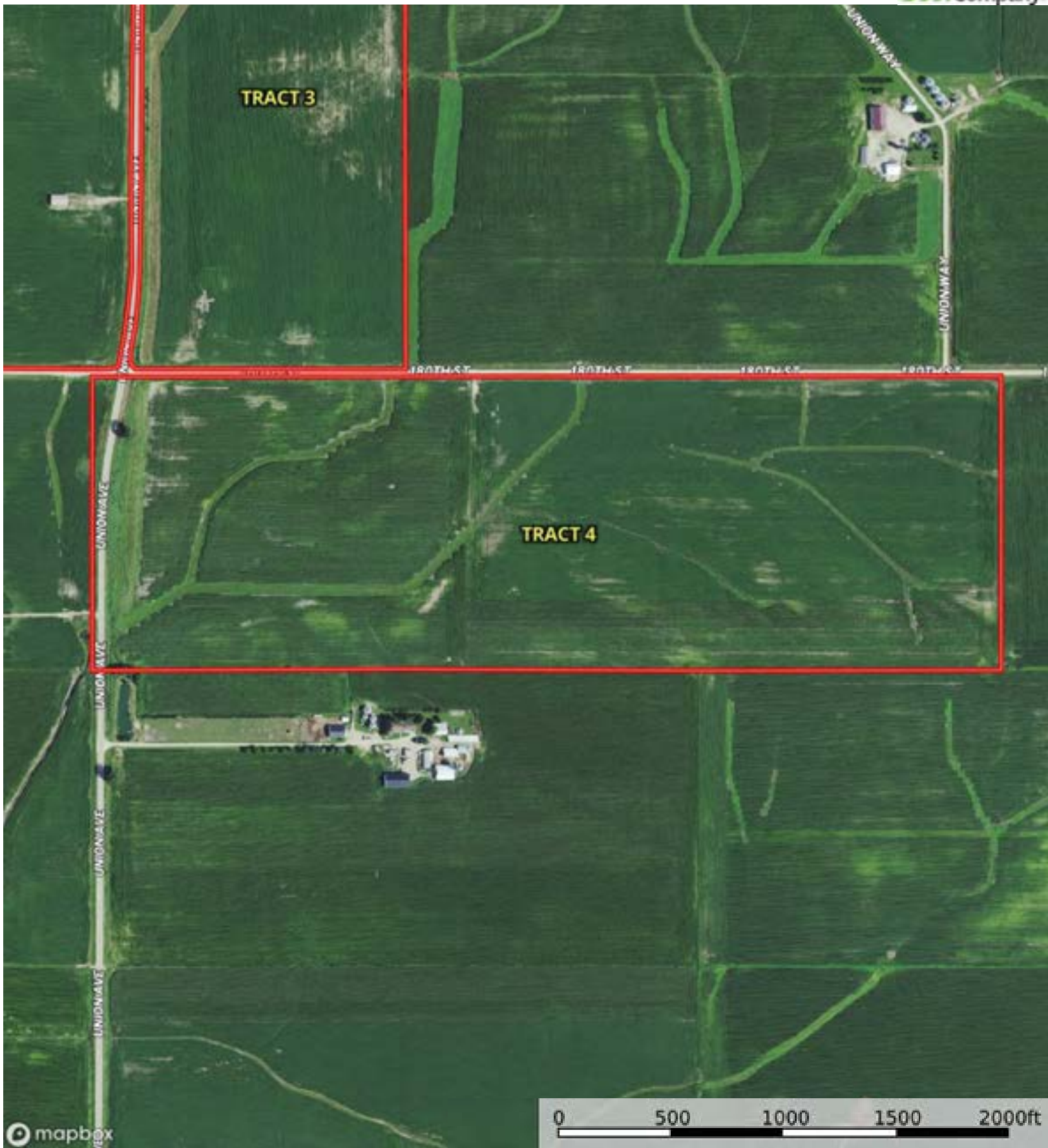
Grazing Cultivation


(c) climatic limitations (e) susceptibility to erosion

(s) soil limitations within the rooting zone (w) excess of water

L-2300330

Chickasaw County, Iowa, 307.76 AC +/-



 Boundary

L-2300330

Chickasaw County, Iowa, 307.76 AC +/-



Boundary



The information contained herein was obtained from sources deemed to be reliable. Land id™ Services makes no warranties or guarantees as to the completeness or accuracy thereof.

|  Boundary 121.26 ac

SOIL CODE	SOIL DESCRIPTION	ACRES	%	CSR2	CPI	NCCPI	CAP
1152	Marshan clay loam, 0 to 2 percent slopes, rarely flooded	25.3	20.86	54.0	0	82	2w
391B	Clyde-Floyd complex, 1 to 4 percent slopes	17.5	14.43	87.0	0	89	2w
394B	Ostrander loam, 2 to 5 percent slopes	13.88	11.45	88.0	0	77	2e
83B	Kenyon loam, 2 to 5 percent slopes	11.99	9.89	90.0	0	87	2e
83C2	Kenyon loam, 5 to 9 percent slopes, eroded	11.5	9.48	84.0	0	77	3e
323B	Fort Dodge loam, 2 to 5 percent slopes	9.6	7.92	79.0	4	96	2e
1727	Udolpho loam, 0 to 2 percent slopes, rarely flooded	8.53	7.03	48.0	0	78	2w
285B	Burkhardt sandy loam, 2 to 5 percent slopes	6.17	5.09	18.0	0	48	3e
407B	Schley loam, 1 to 4 percent slopes	5.57	4.59	81.0	0	95	2w
198B	Floyd loam, 1 to 4 percent slopes	3.77	3.11	89.0	0	88	2w
177B	Saude loam, 2 to 5 percent slopes	2.78	2.29	55.0	0	77	2s
171B	Bassett loam, 2 to 5 percent slopes	2.49	2.05	85.0	0	86	2e
284C2	Flagler sandy loam, 5 to 9 percent slopes, moderately eroded	2.18	1.8	41.0	0	55	3e
TOTALS		121.26(*)	100%	71.53	0.32	81.81	2.16









(*) Total acres may differ in the second decimal compared to the sum of each acreage soil. This is due to a round error because we only show the acres of each soil with two decimal.

Capability Legend

Increased Limitations and Hazards

Decreased Adaptability and Freedom of Choice Users

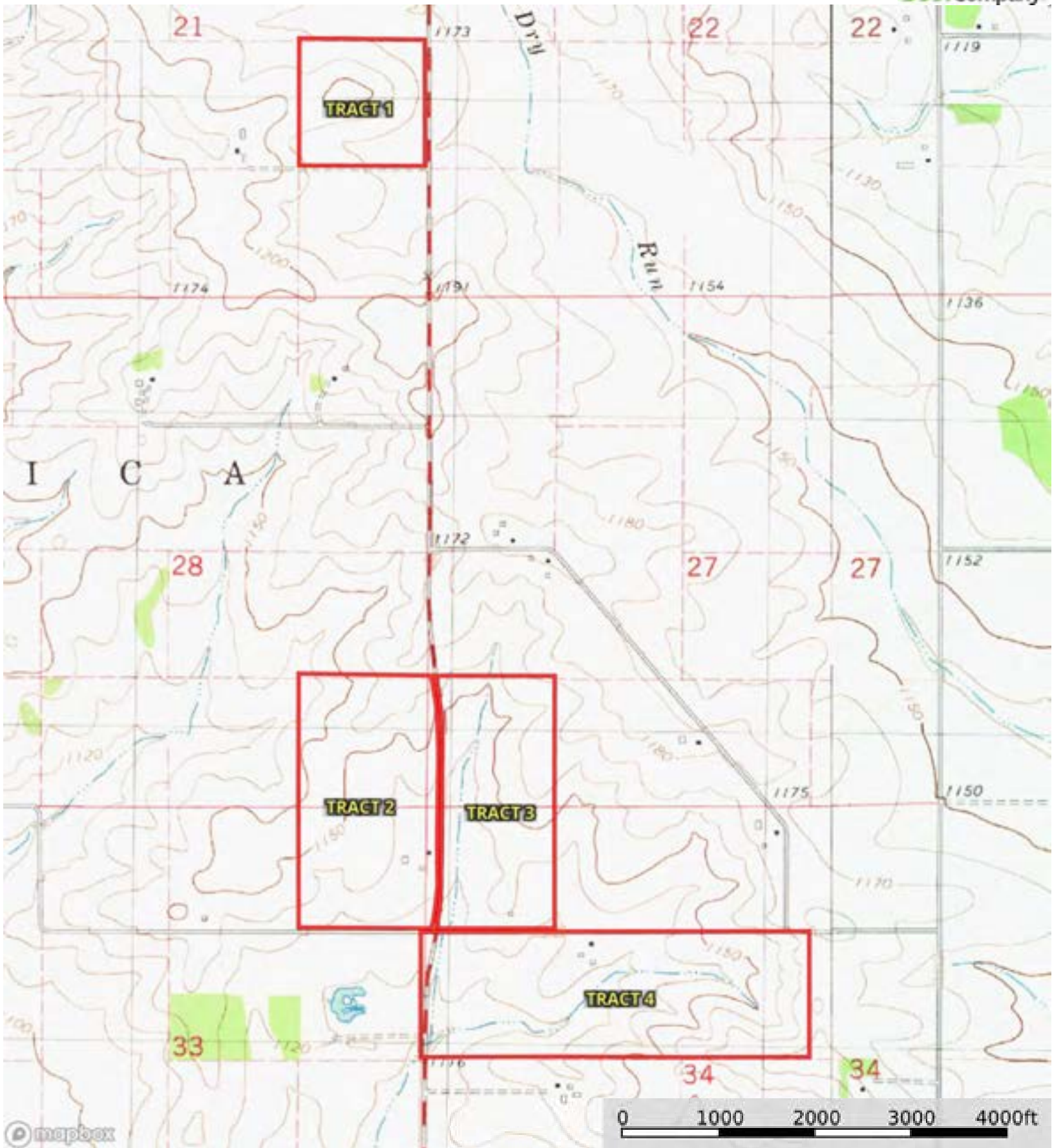
Land, Capability

								
	1	2	3	4	5	6	7	8
'Wild Life'	•	•	•	•	•	•	•	•
Forestry	•	•	•	•	•	•	•	
Limited	•	•	•	•	•	•	•	
Moderate	•	•	•	•	•	•		
Intense	•	•	•	•	•			
Limited	•	•	•	•				
Moderate	•	•	•					
Intense	•	•						
Very Intense	•							

Grazing Cultivation

(c) climatic limitations (e) susceptibility to erosion

(s) soil limitations within the rooting zone (w) excess of water



Boundary