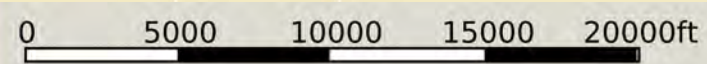
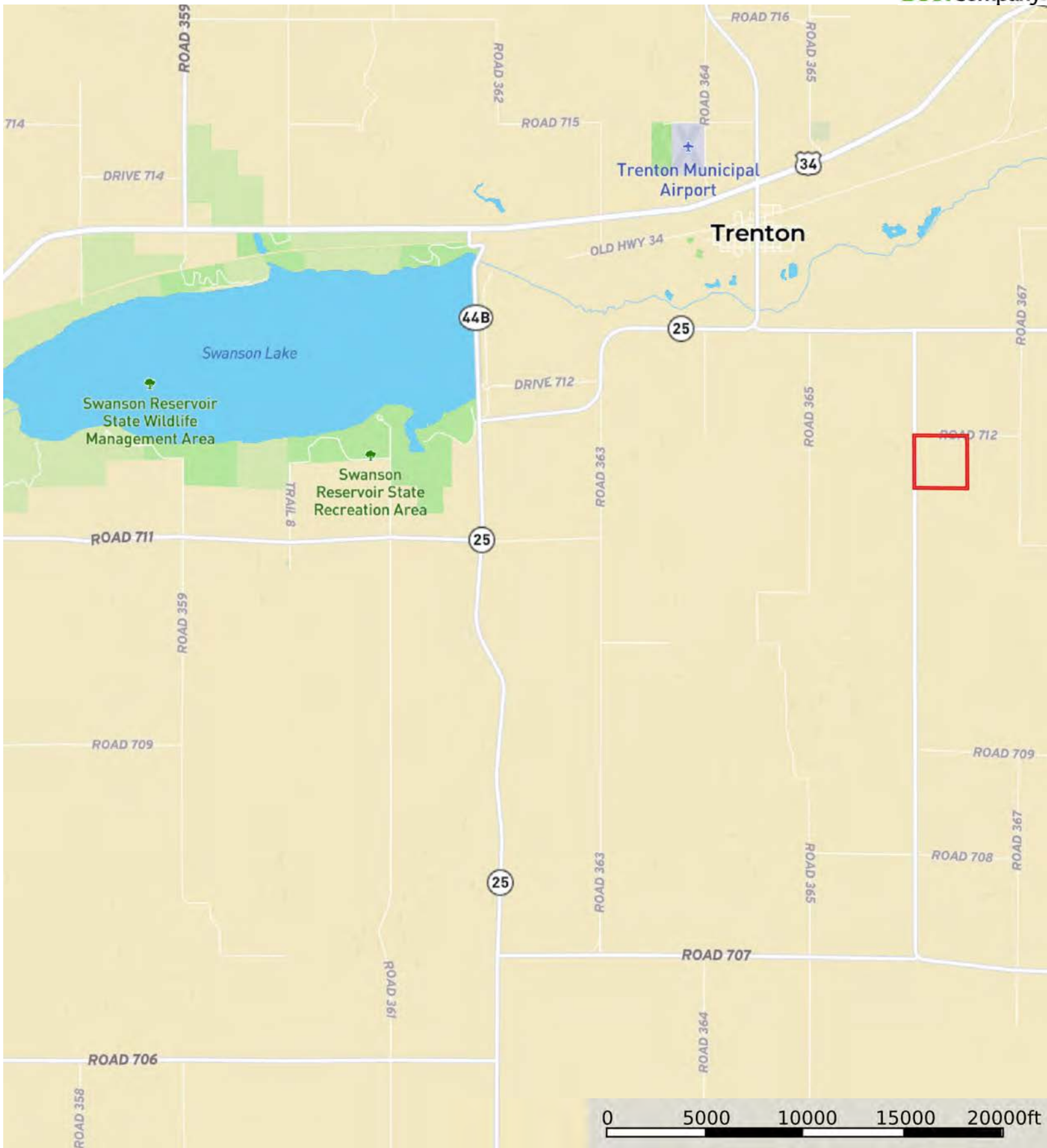


L-2300343

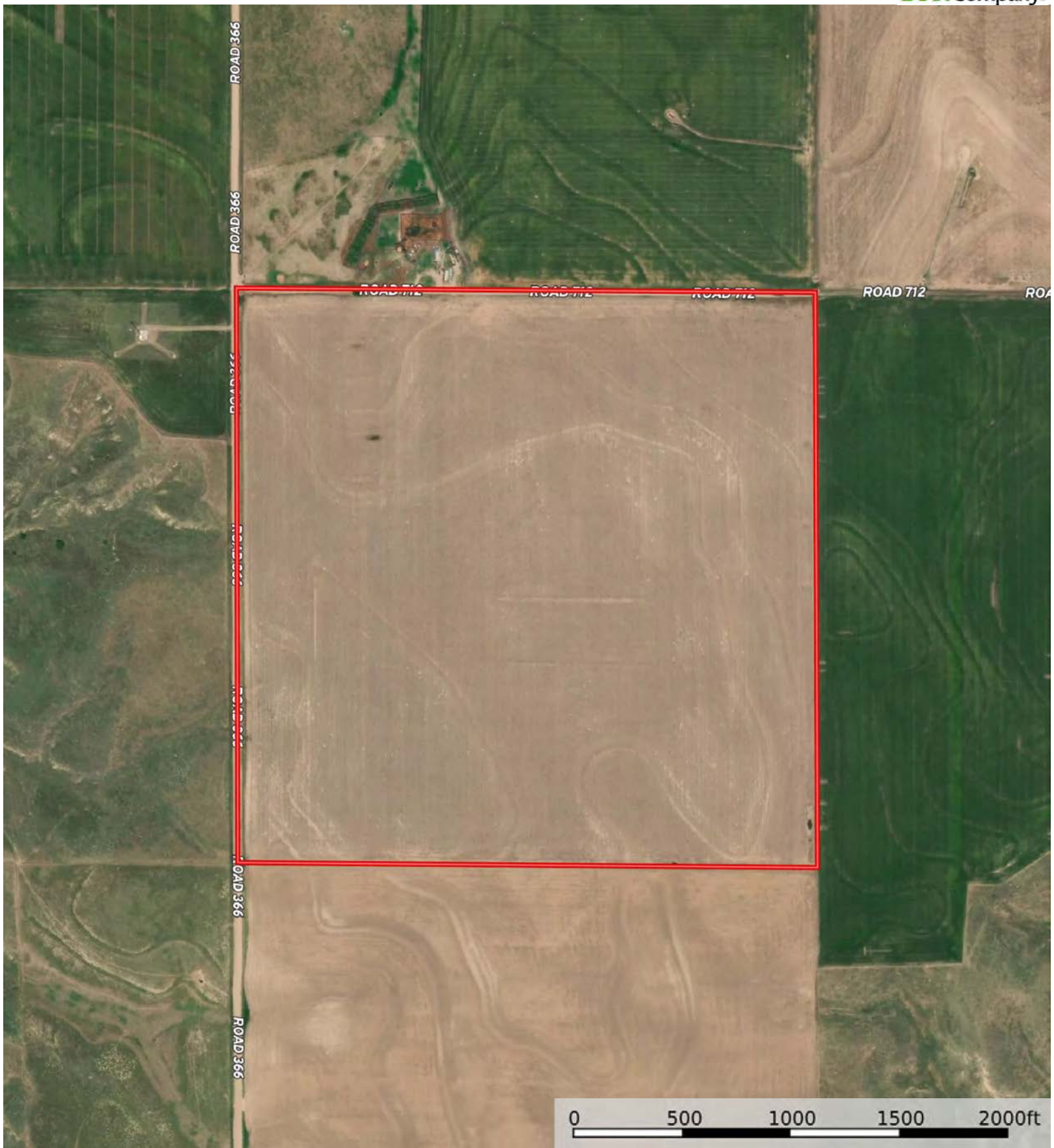
Hitchcock County, Nebraska, 165 AC +/-




Boundary

L-2300343

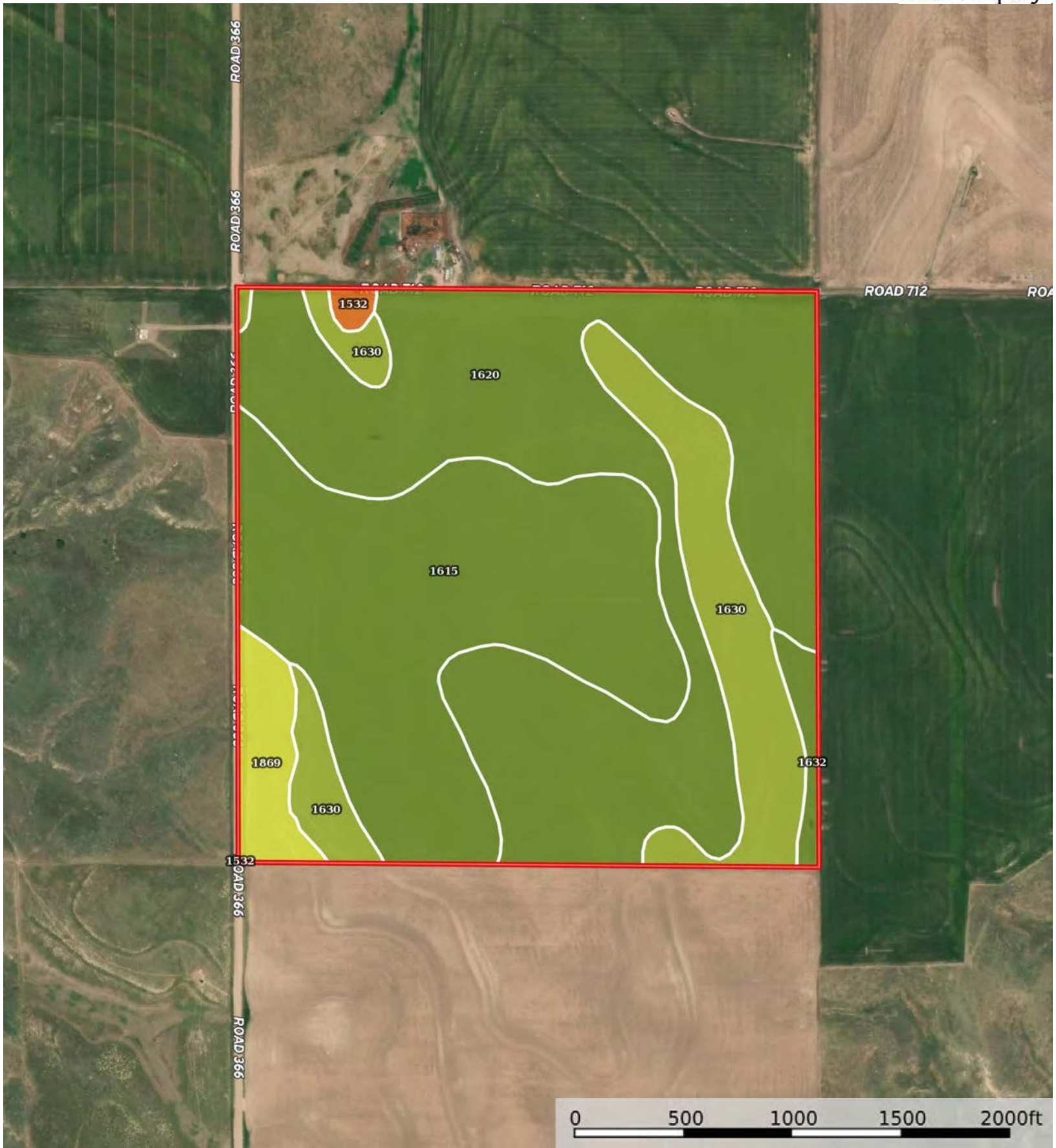
Hitchcock County, Nebraska, 165 AC +/-




 Boundary

L-2300343

Hitchcock County, Nebraska, 165 AC +/-



 Boundary

Boundary 162.71 ac

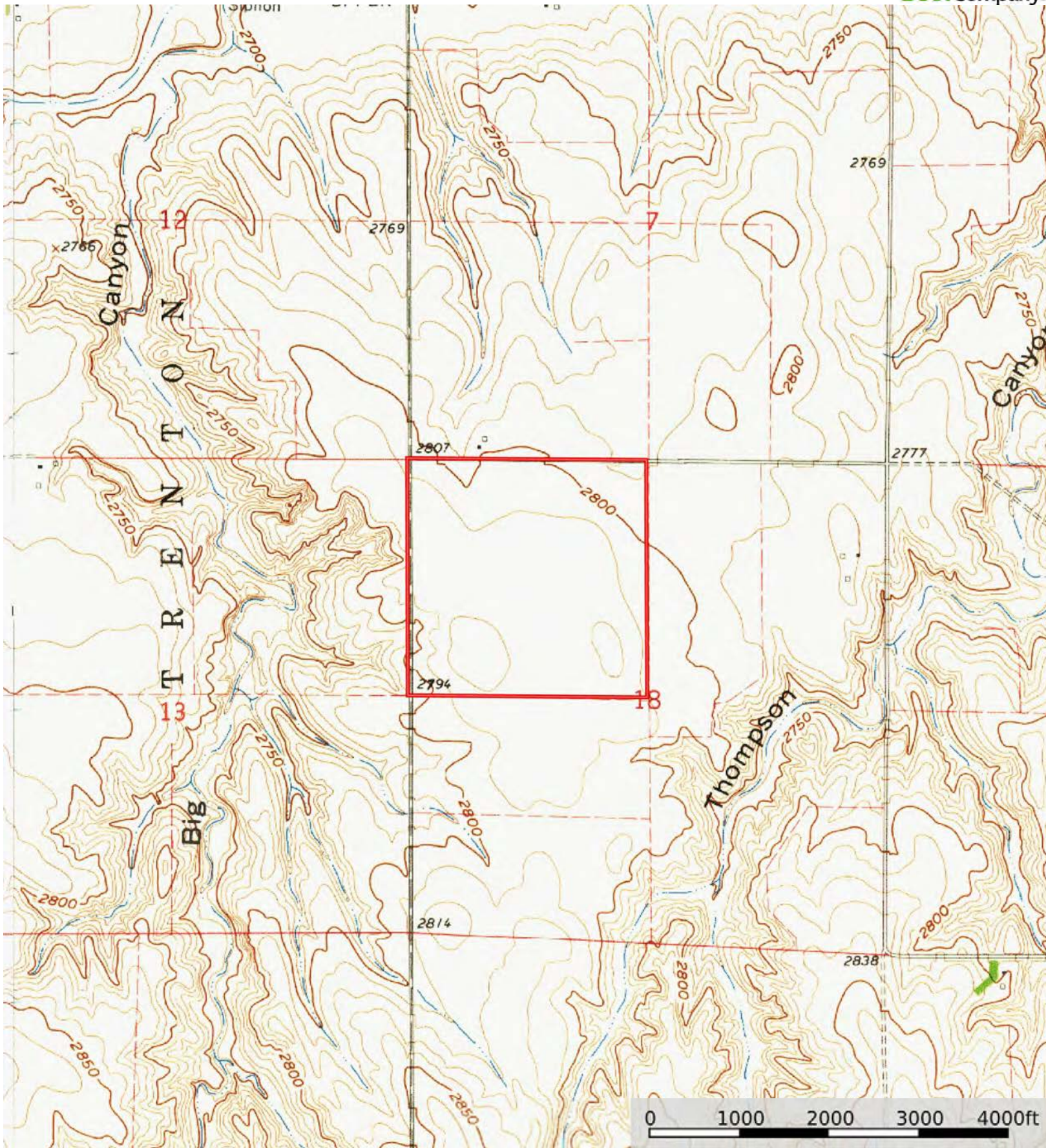
SOIL CODE	SOIL DESCRIPTION	ACRES	%	CPI	NCCPI	CAP
1620	Keith silt loam, 1 to 3 percent slopes	75.33	46.3	0	69	2e
1615	Keith and Blackwood silt loams, 0 to 1 percent slopes	53.87	33.11	0	61	2c
1630	Keith silt loam, 3 to 6 percent slopes, eroded	23.9	14.69	0	50	3e
1869	Ulysses-Sulco silt loams, 6 to 9 percent slopes, eroded	6.24	3.84	0	46	4e
1632	Keith silt loam, 1 to 3 percent slopes, eroded	2.54	1.56	0	52	2e
1532	Sulco silt loam, 9 to 30 percent slopes	0.83	0.51	0	31	7e
TOTALS		162.71(*)	100%	-	62.23	2.25


(\*) Total acres may differ in the second decimal compared to the sum of each acreage soil. This is due to a round error because we only show the acres of each soil with two decimal.



L-2300343

Hitchcock County, Nebraska, 165 AC +/-



 Boundary