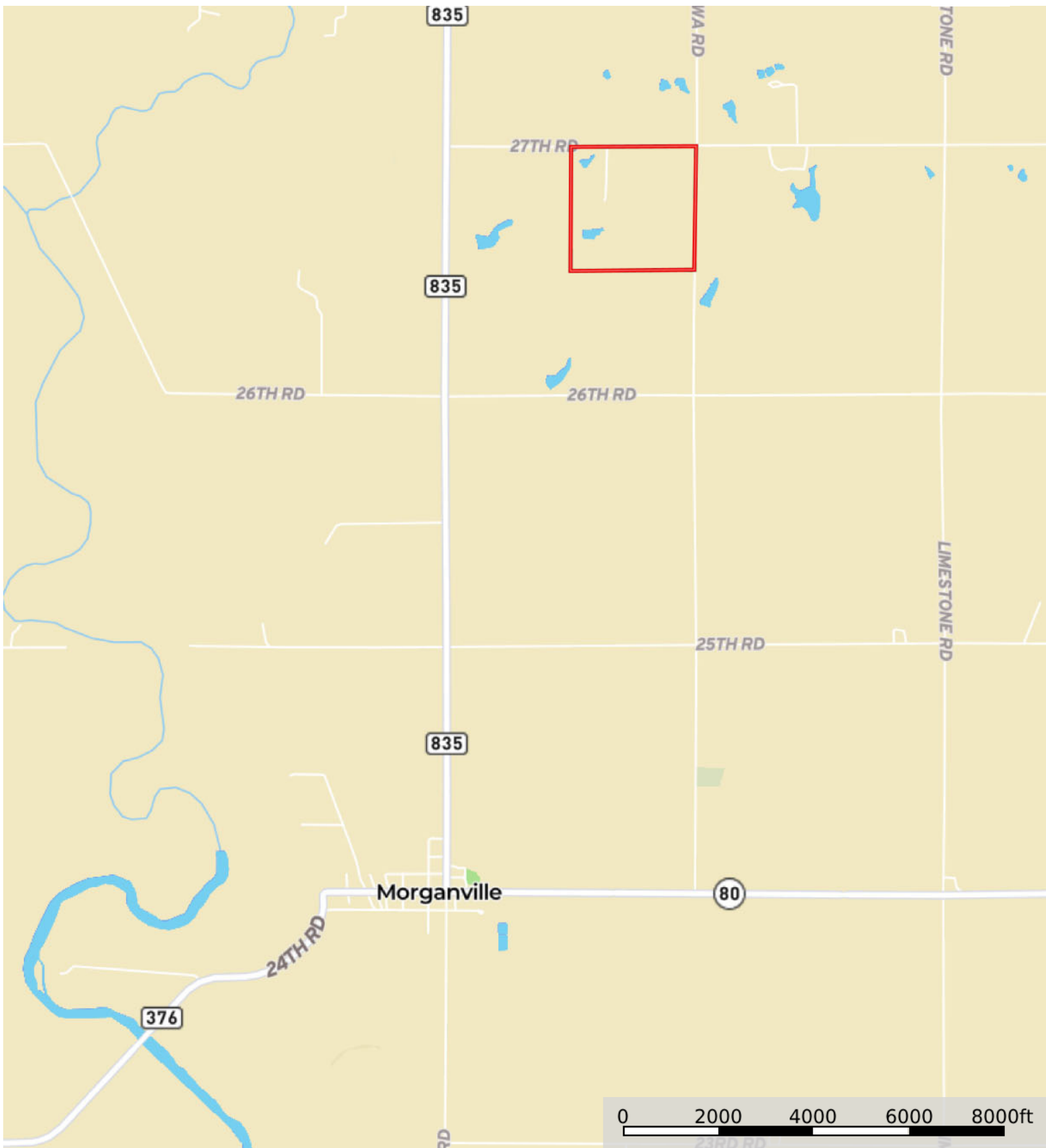

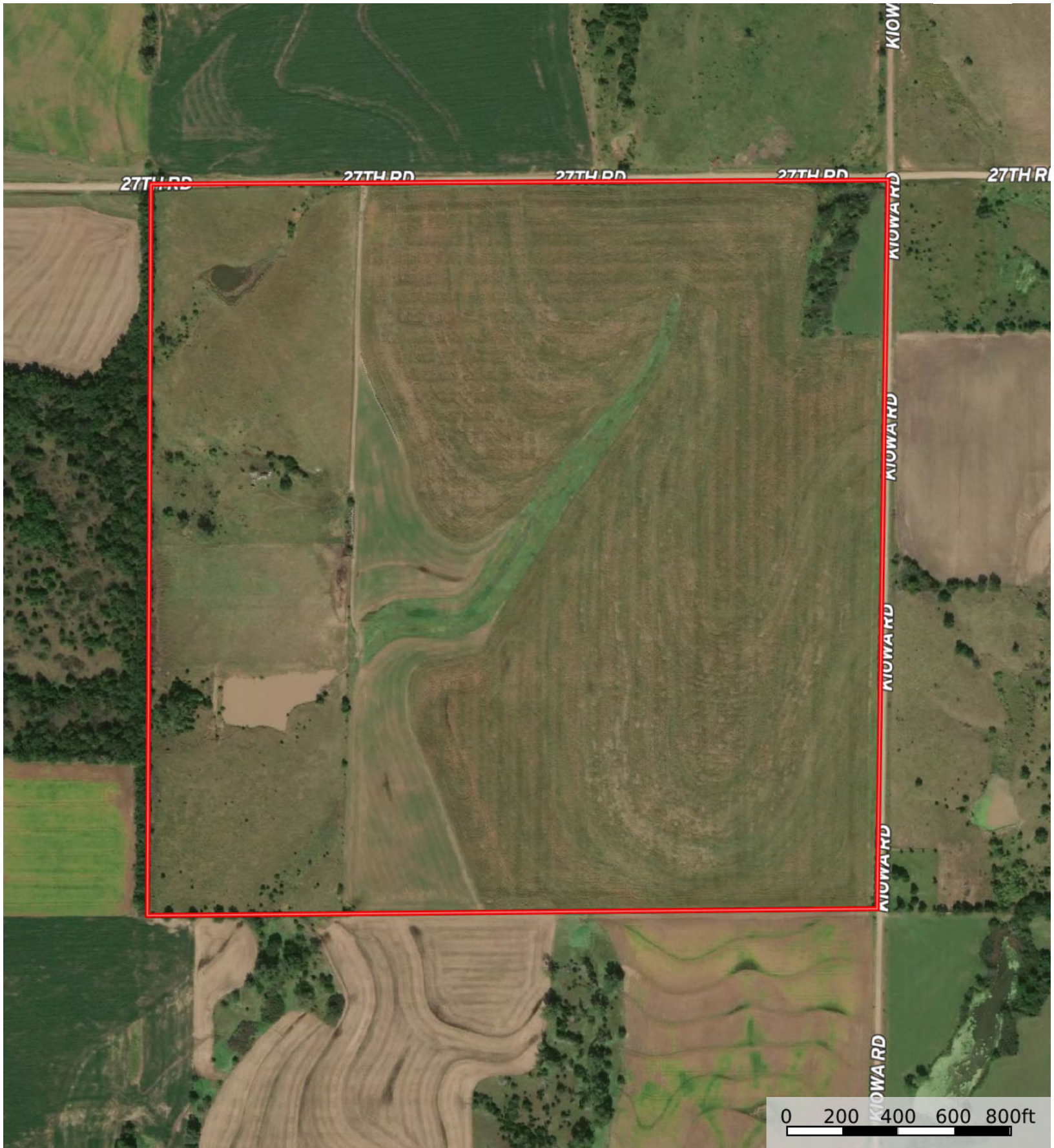



L-2300356

Clay County, Kansas, 157.25 AC +/-



 Boundary




 Boundary

L-2300356

Clay County, Kansas, 157.25 AC +/-



 Boundary

|  Boundary 157.09 ac

SOIL CODE	SOIL DESCRIPTION	ACRES	%	CPI	NCCPI	CAP
3828	Crete silty clay loam, 1 to 3 percent slopes	118.12	75.19	0	64	2e
3844	Geary silt loam, 3 to 7 percent slopes	21.4	13.62	0	73	3e
3830	Crete silty clay loam, 3 to 7 percent slopes	16.34	10.4	0	62	3e
3846	Geary silty clay loam, 3 to 7 percent slopes, eroded	1.09	0.69	0	62	3e
3845	Geary silt loam, 7 to 15 percent slopes	0.14	0.09	0	67	6e
TOTALS		157.09(*)	100%	-	65.0	2.25

(*) Total acres may differ in the second decimal compared to the sum of each acreage soil. This is due to a round error because we only show the acres of each soil with two decimal.

Capability Legend

Increased Limitations and Hazards

Decreased Adaptability and Freedom of Choice Users

Land, Capability

	1	2	3	4	5	6	7	8
'Wild Life'	•	•	•	•	•	•	•	•
Forestry	•	•	•	•	•	•	•	
Limited	•	•	•	•	•	•	•	
Moderate	•	•	•	•	•	•		
Intense	•	•	•	•	•			
Limited	•	•	•	•				
Moderate	•	•	•					
Intense	•	•						
Very Intense	•							

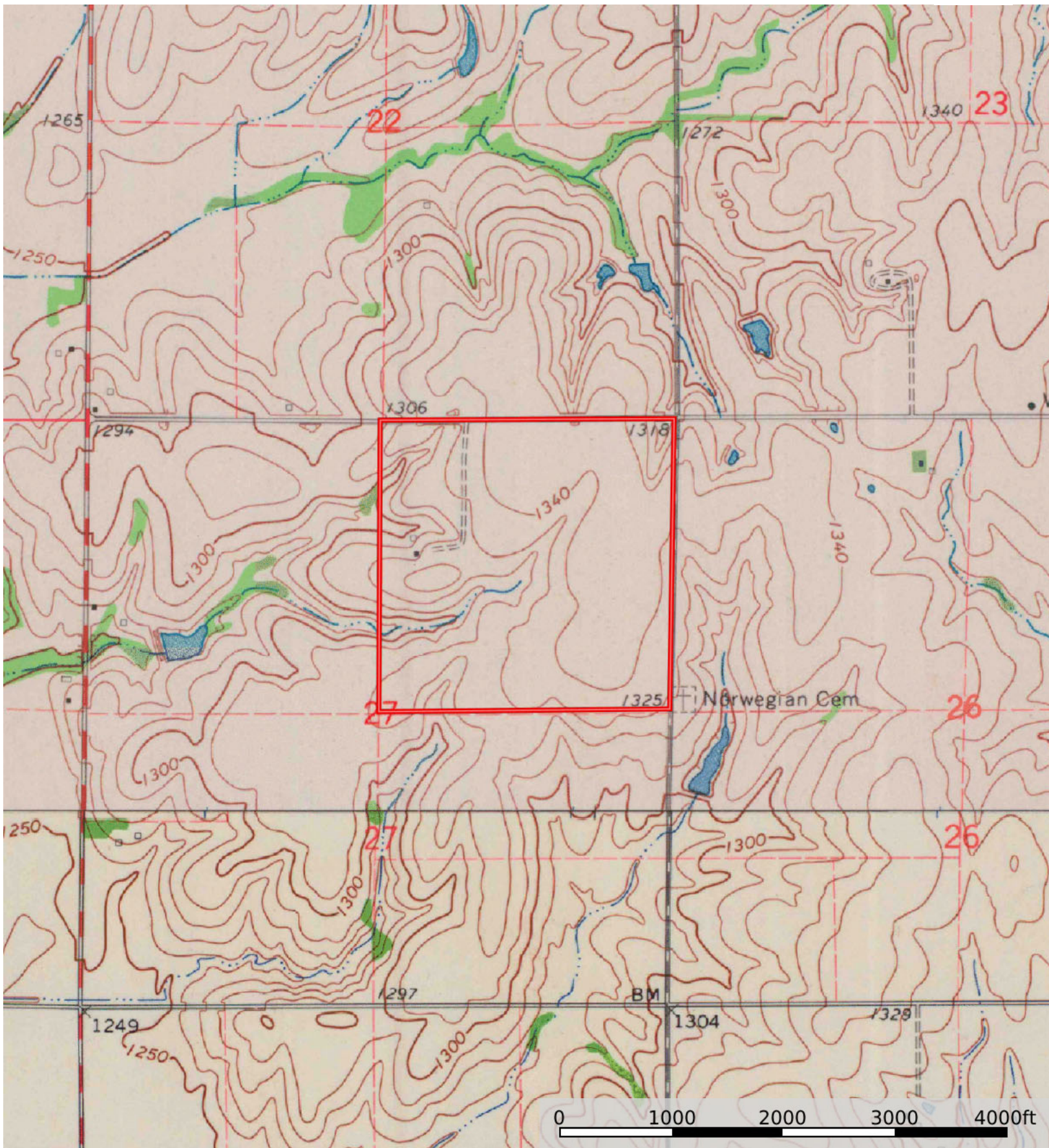
Grazing Cultivation


(c) climatic limitations (e) susceptibility to erosion

(s) soil limitations within the rooting zone (w) excess of water

L-2300356

Clay County, Kansas, 157.25 AC +/-



 Boundary