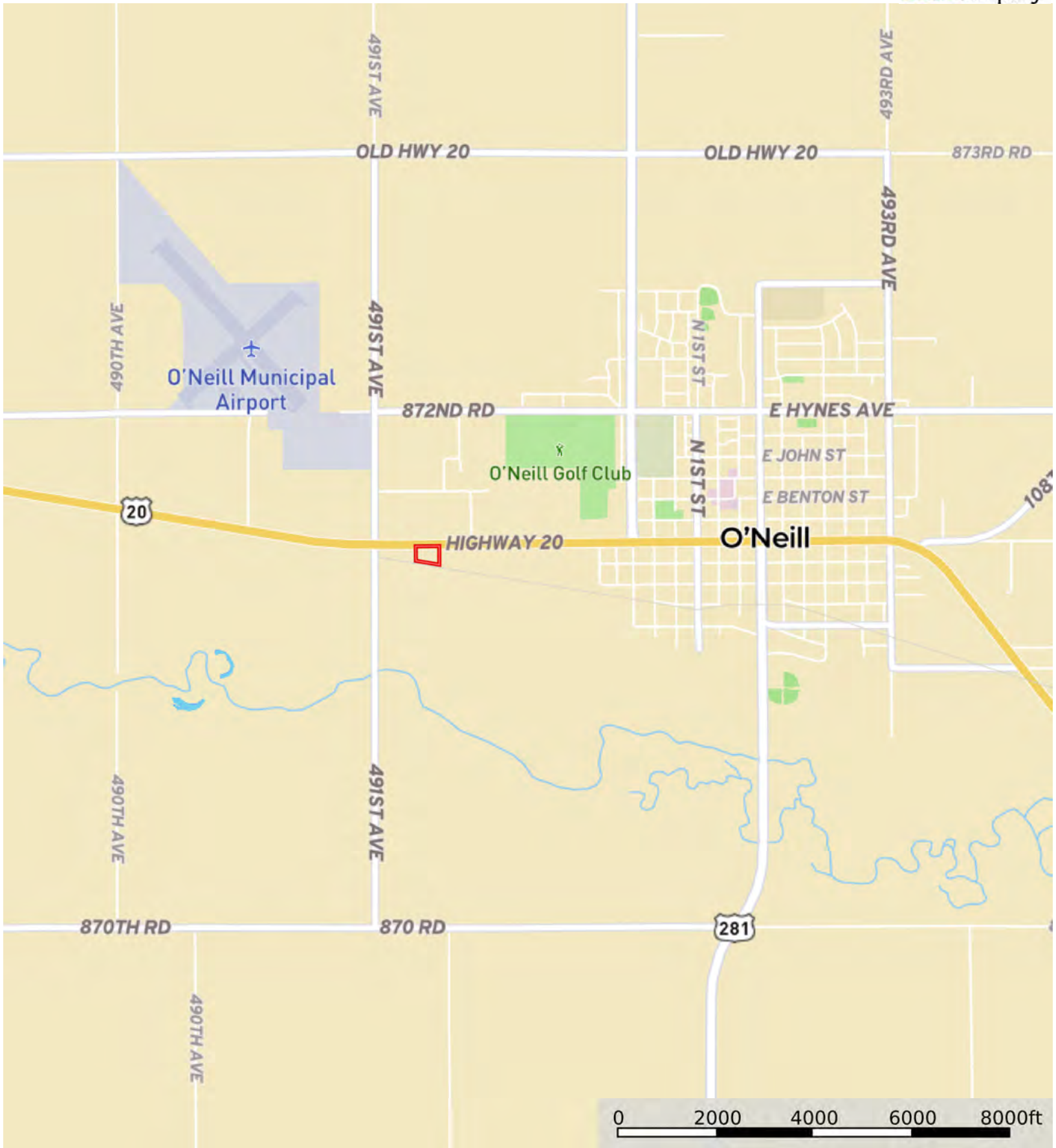


L-2300359

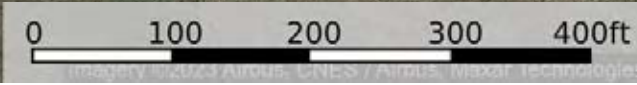
Holt County, Nebraska, 3.71 AC +/-



 Boundary



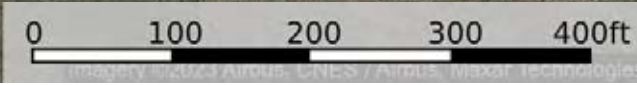
Google



Boundary



Google



 Boundary

|  Boundary 3.73 ac

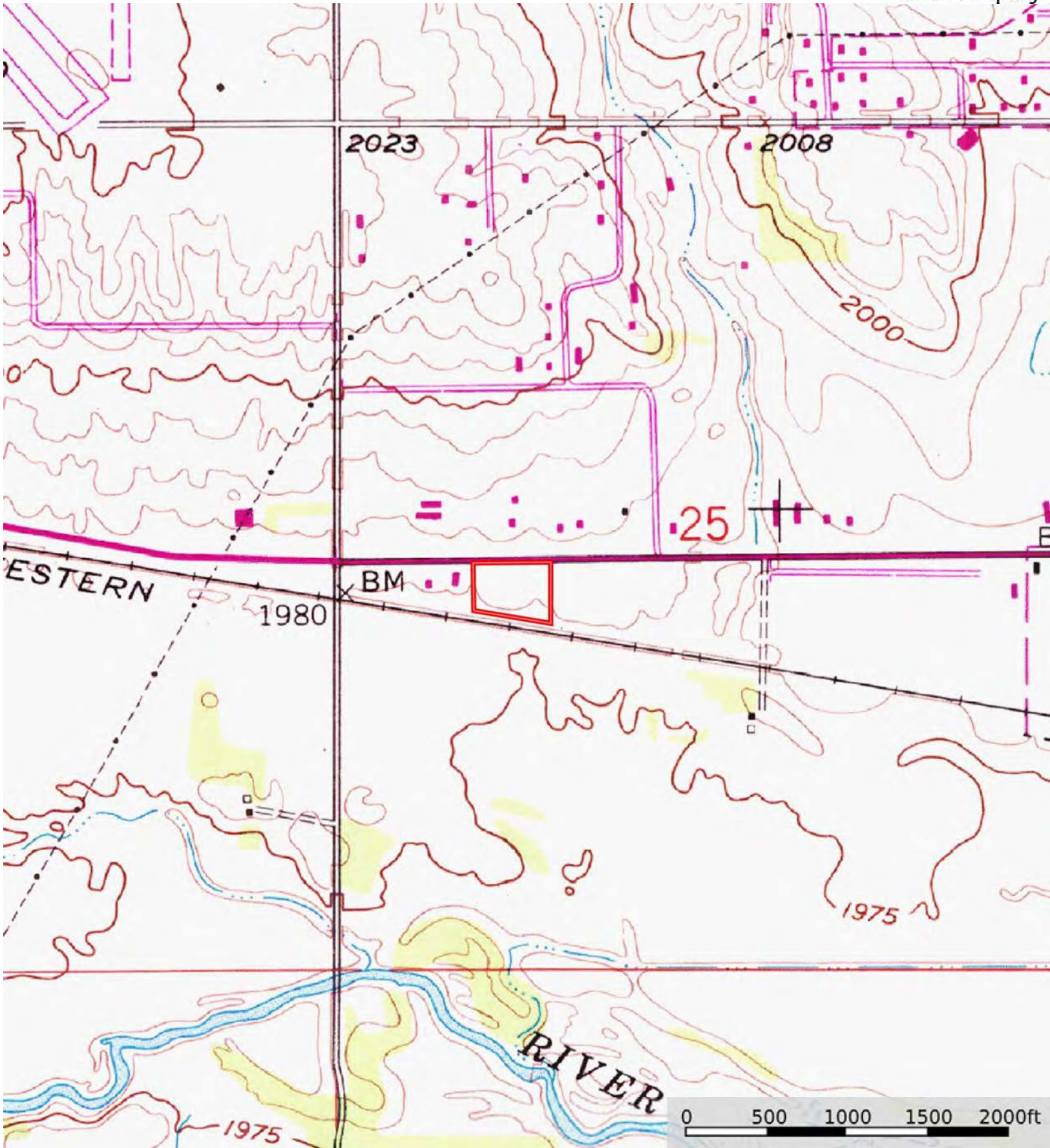
SOIL CODE	SOIL DESCRIPTION	ACRES	%	CPI	NCCPI	CAP
8807	Anselmo-O'Neill sandy loams, 0 to 3 percent slopes	3.73	100.0	0	37	2e
TOTALS		3.73(*)	100%	-	37.0	2.0

(*) Total acres may differ in the second decimal compared to the sum of each acreage soil. This is due to a round error because we only show the acres of each soil with two decimal.



L-2300359

Holt County, Nebraska, 3.71 AC +/-



 Boundary