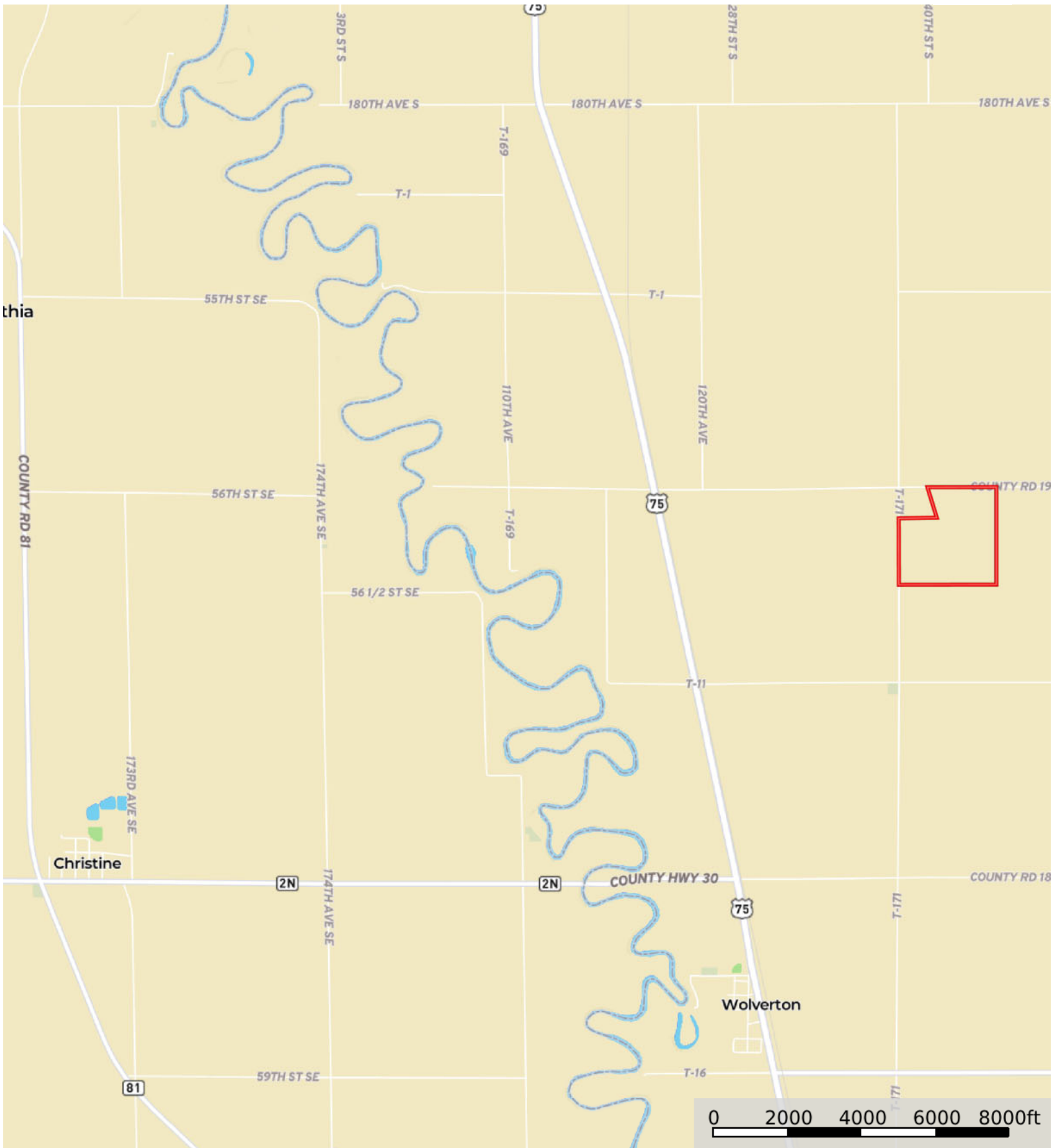



L-2300362

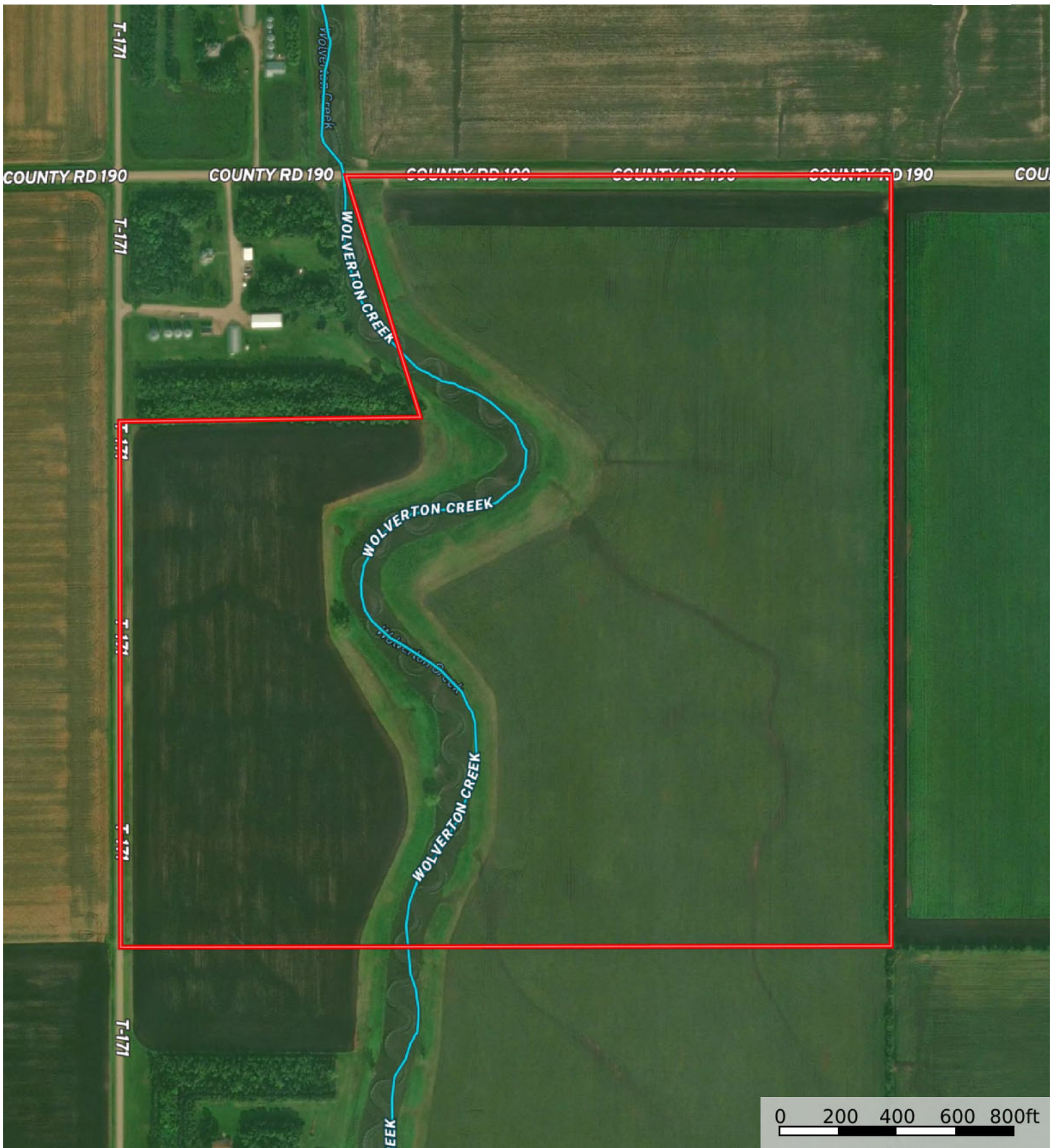
Wilkin County, Minnesota, 142.63 AC +/-



 Boundary

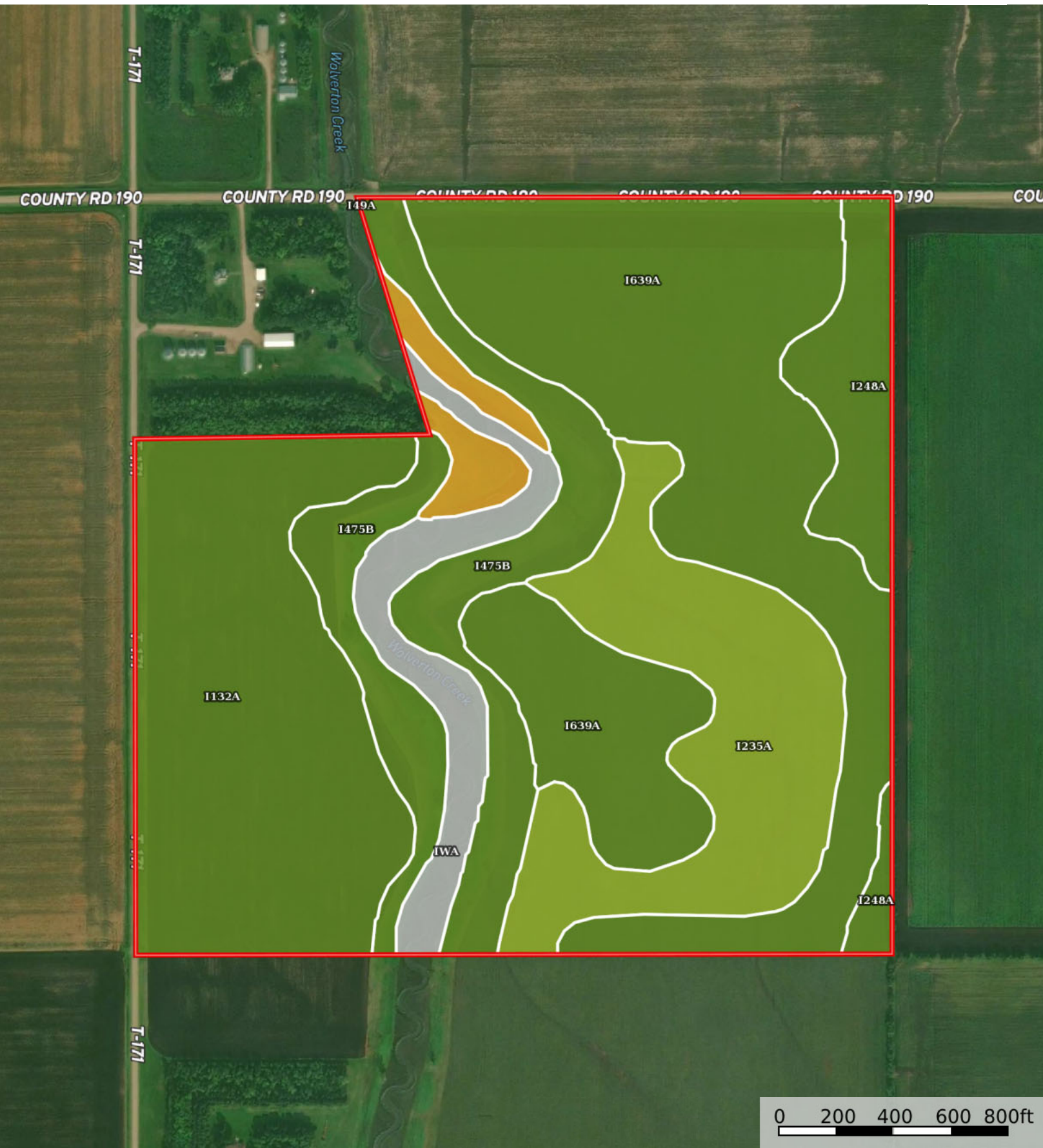
L-2300362


Wilkin County, Minnesota, 142.63 AC +/-



0 200 400 600 800ft

-  Boundary
-  Stream, Intermittent
-  River/Creek
-  Water Body



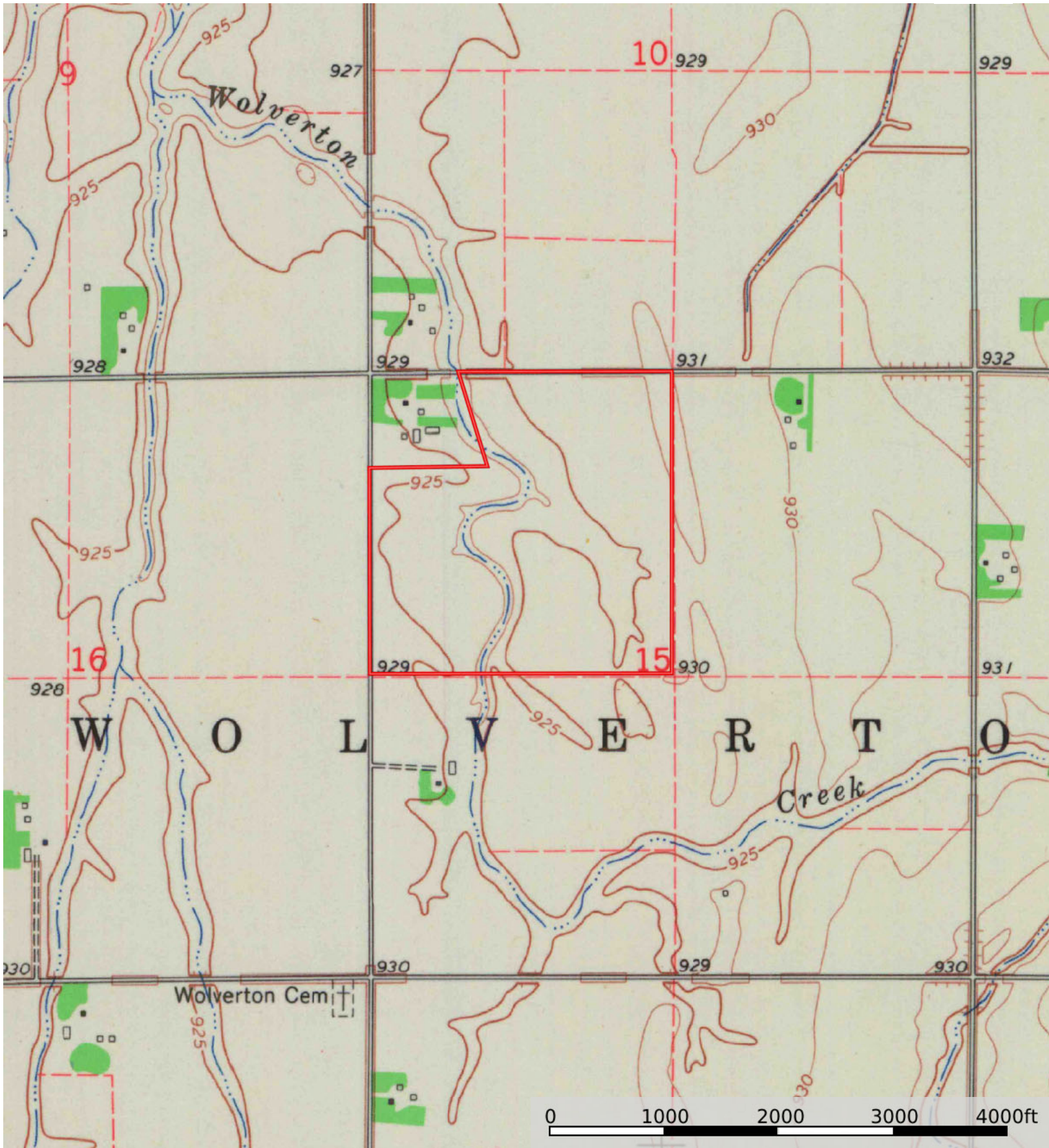
 Boundary


Boundary 142.96 ac

SOIL CODE	SOIL DESCRIPTION	ACRES	%	CPI	NCCPI	CAP
I639A	Fargo silty clay, till-floored lake plain, 0 to 1 percent slopes	48.78	34.12	94	52	2w
I132A	Northcote-Eaglepoint clays, 0 to 1 percent slopes	33.26	23.27	75	46	2w
I235A	Fargo silty clay, depressional, 0 to 1 percent slopes	21.99	15.38	83	23	3w
I475B	Sinai silty clay, levees, 0 to 6 percent slopes	19.09	13.35	93	46	2e
I248A	Wahpeton silty clay, 0 to 2 percent slopes, occasionally flooded	8.29	5.8	84	51	2e
IWa	Water	7.98	5.58	0	-	-
I49A	Rauville silty clay loam, 0 to 2 percent slopes, frequently flooded	3.57	2.5	20	7	6w
TOTALS		142.96(*)	100%	80.08	41.26	2.27

(*) Total acres may differ in the second decimal compared to the sum of each acreage soil. This is due to a round error because we only show the acres of each soil with two decimal.





 Boundary