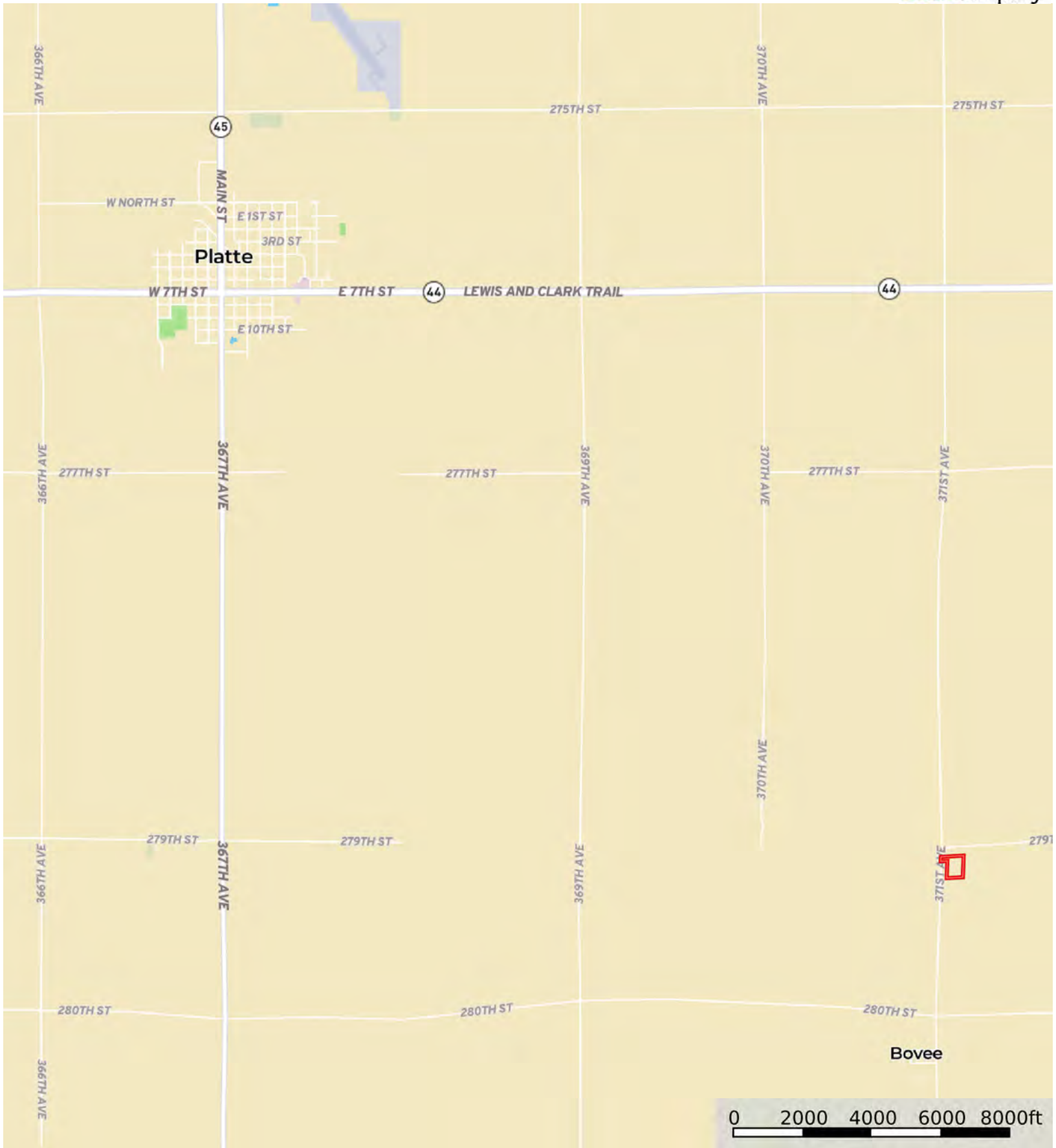


L-2300372

Charles Mix County, South Dakota, 7.37 AC +/-



 Boundary



The information contained herein was obtained from sources deemed to be reliable. Land id™ Services makes no warranties or guarantees as to the completeness or accuracy thereof.

L-2300372

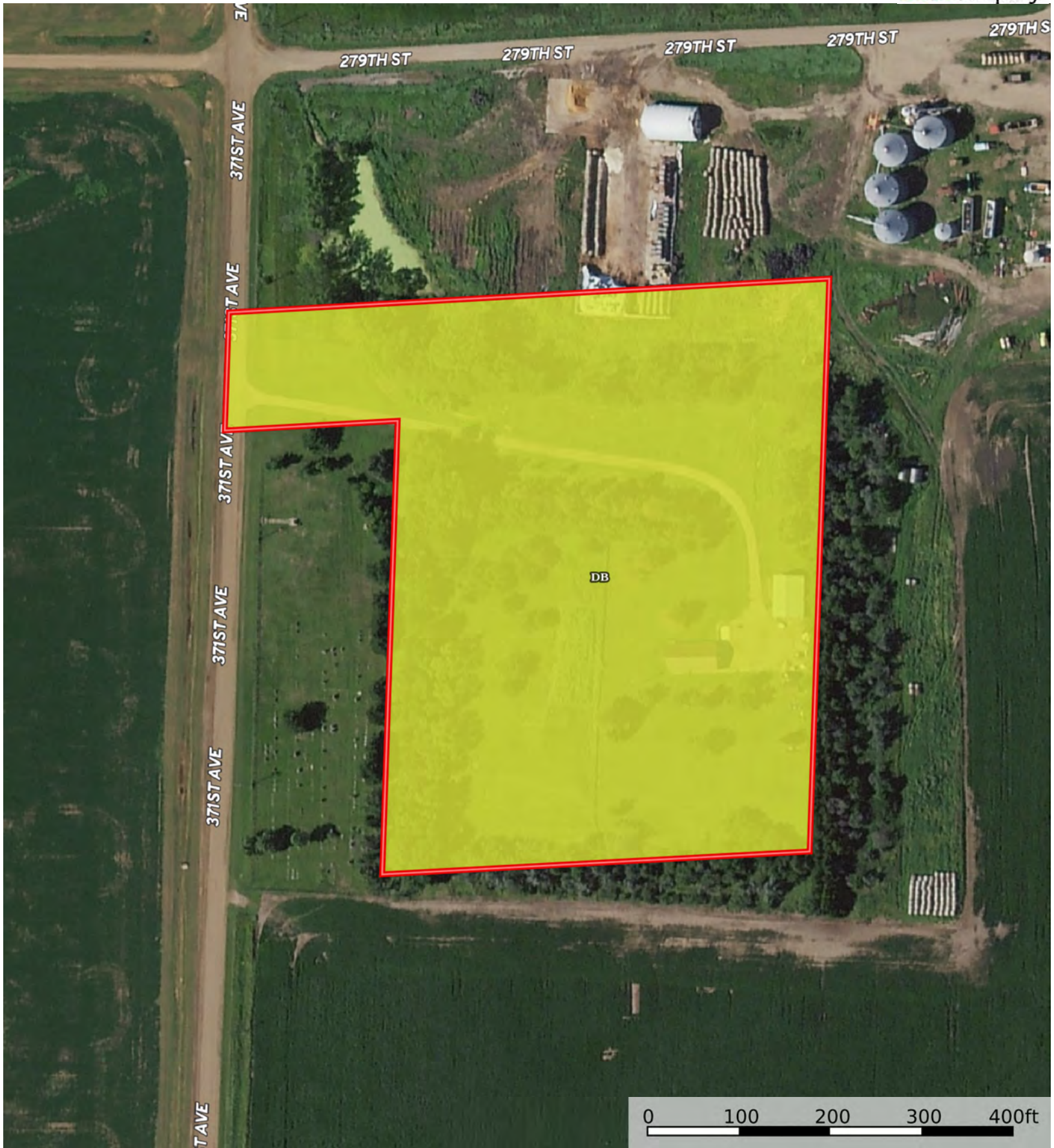
Charles Mix County, South Dakota, 7.37 AC +/-




 Boundary

L-2300372

Charles Mix County, South Dakota, 7.37 AC +/-



 Boundary

|  Boundary 7.32 ac

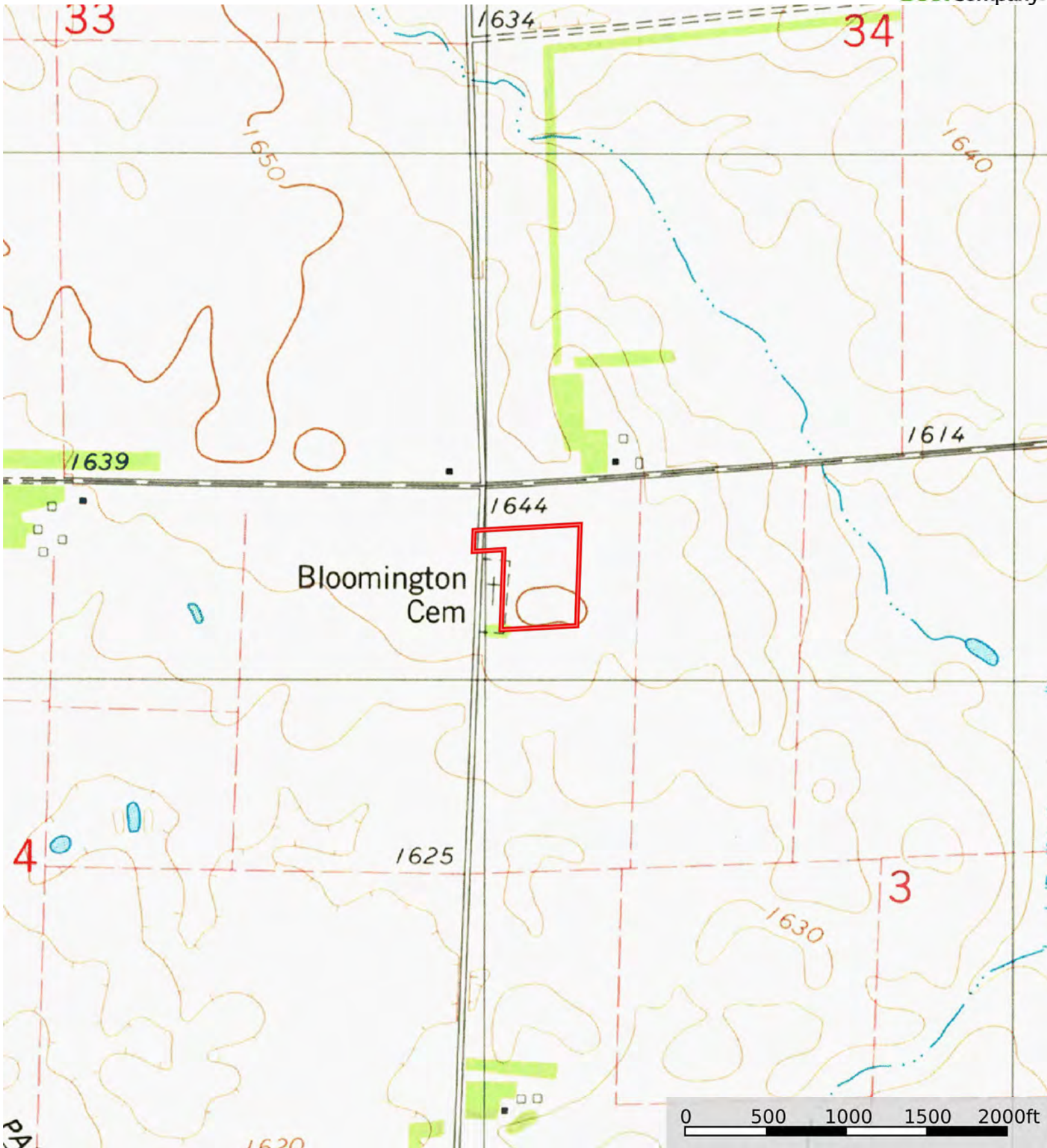
| SOIL CODE | SOIL DESCRIPTION | ACRES | % | CPI | NCCPI | CAP |
|-----------|------------------------------------------------|---------|-------|------|-------|-----|
| Db | DeGrey-Walke silt loams, 0 to 2 percent slopes | 7.32 | 100.0 | 56 | 34 | 4s |
| TOTALS | | 7.32(*) | 100% | 56.0 | 34.0 | 4.0 |

(*) Total acres may differ in the second decimal compared to the sum of each acreage soil. This is due to a round error because we only show the acres of each soil with two decimal.



L-2300372

Charles Mix County, South Dakota, 7.37 AC +/-



□ Boundary