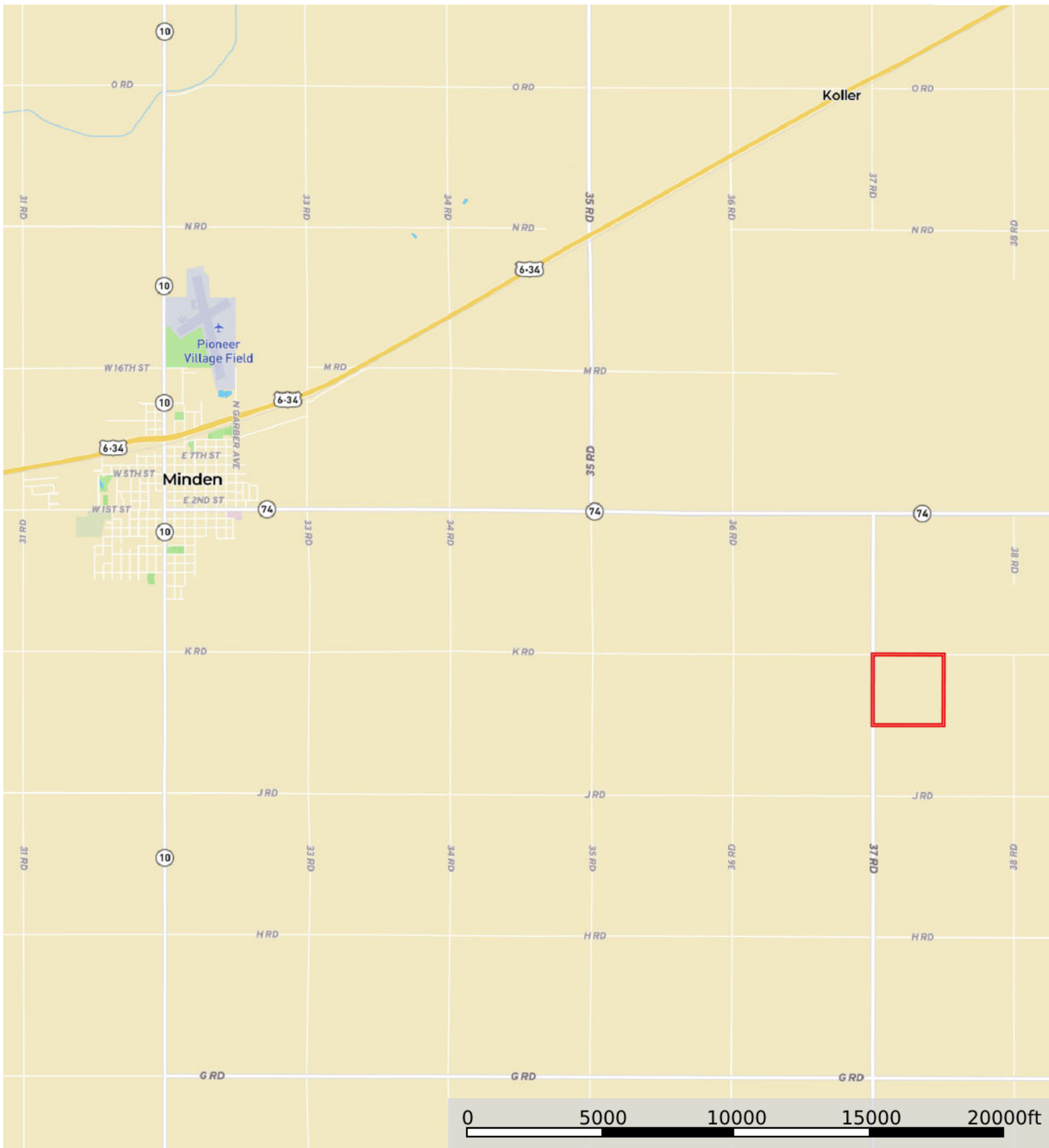



L-2300373

Kearney County, Nebraska, 160.18 AC +/-




 Boundary

L-2300373

Kearney County, Nebraska, 160.18 AC +/-

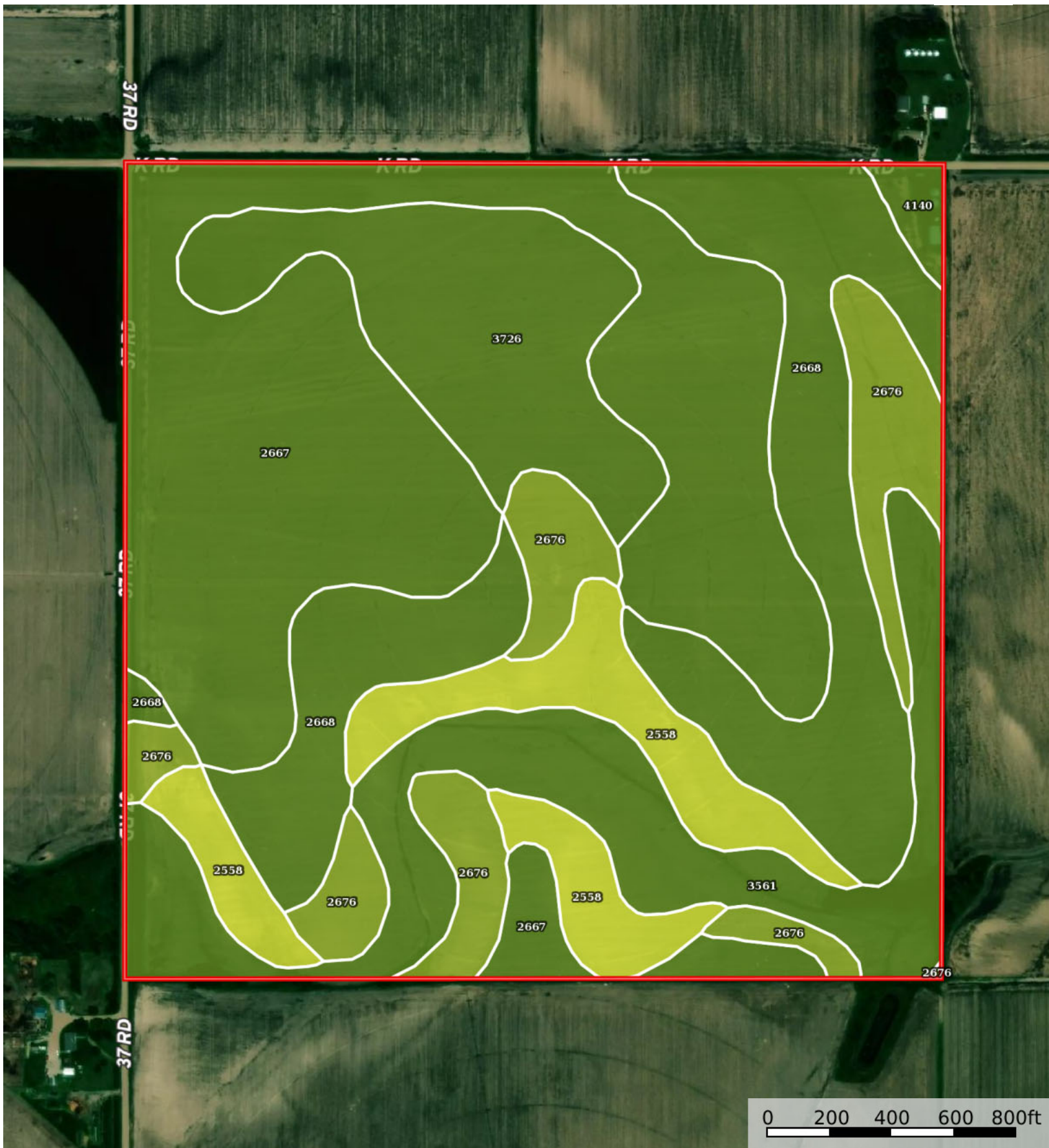



 Boundary

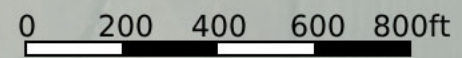
0 200 400 600 800ft

L-2300373

Kearney County, Nebraska, 160.18 AC +/-



 Boundary



Boundary 160.04 ac

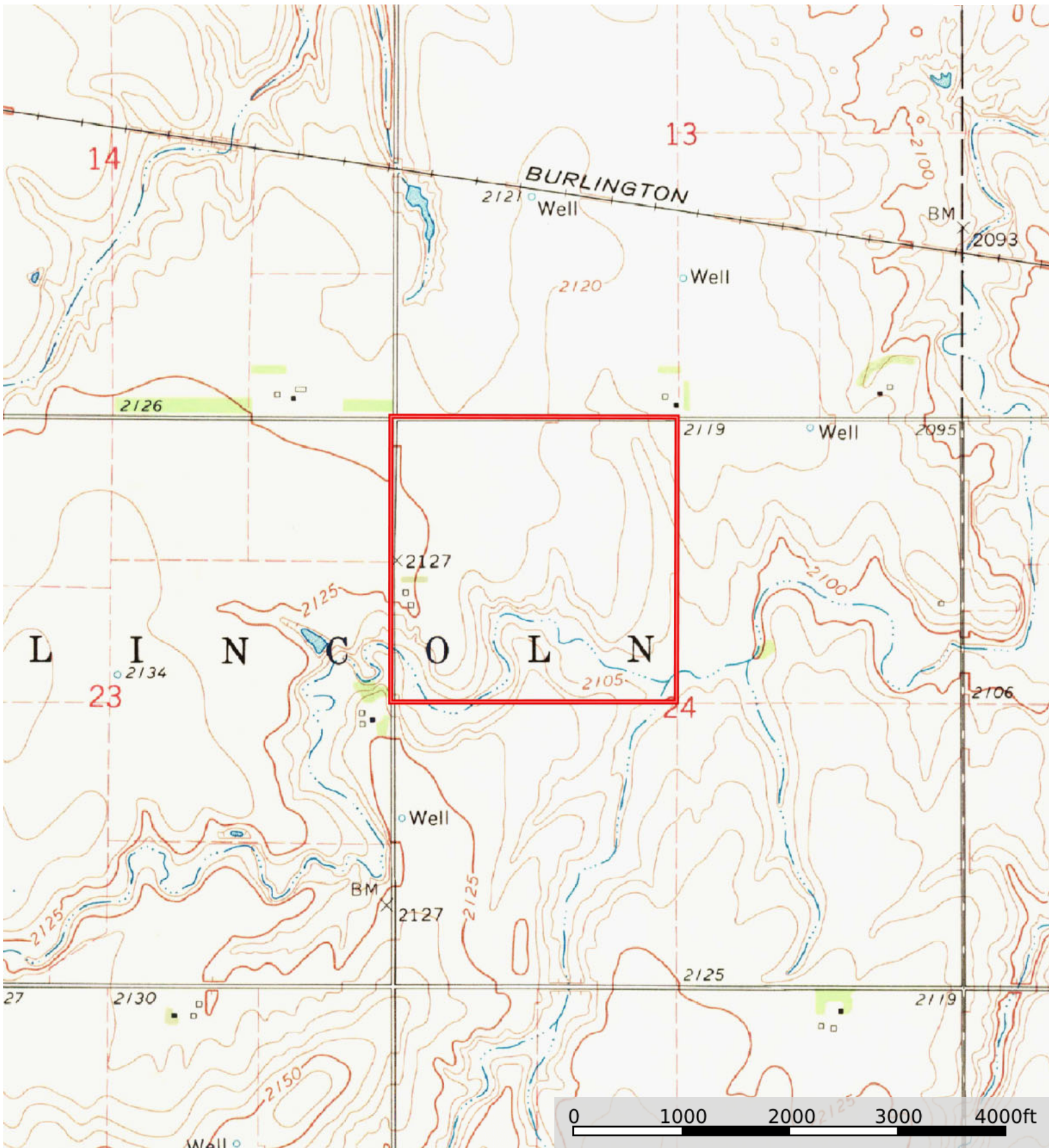
SOIL CODE	SOIL DESCRIPTION	ACRES	%	CPI	NCCPI	CAP
2667	Holdrege silt loam, 0 to 1 percent slopes	55.95	34.96	0	81	2e
2668	Holdrege silt loam, 1 to 3 percent slopes	31.96	19.97	0	81	2e
3561	Hobbs silt loam, occasionally flooded	21.58	13.48	0	81	2w
3726	Detroit silt loam, 0 to 1 percent slopes	18.52	11.57	0	65	2c
2676	Holdrege silt loam, 3 to 7 percent slopes, eroded, plains and breaks	15.73	9.83	0	70	3e
2558	Coly-Uly silt loams, 6 to 11 percent slopes, eroded	14.95	9.34	0	65	4e
4140	Holdrege silt loam, overblown, 0 to 1 percent slopes	1.35	0.84	0	81	2c
TOTALS		160.04(*)	100%	-	76.56	2.29


(*) Total acres may differ in the second decimal compared to the sum of each acreage soil. This is due to a round error because we only show the acres of each soil with two decimal.



L-2300373

Kearney County, Nebraska, 160.18 AC +/-



 Boundary