

Page: 39

Page: Bennett County

Oglala Lakota County Landownership

Data as of: August 2019

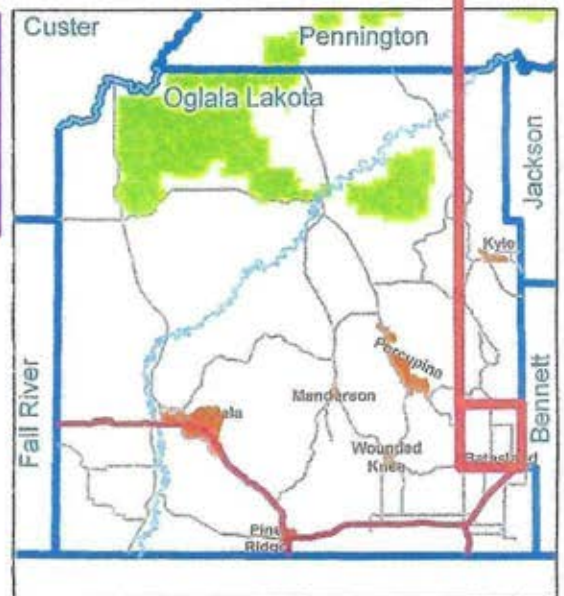


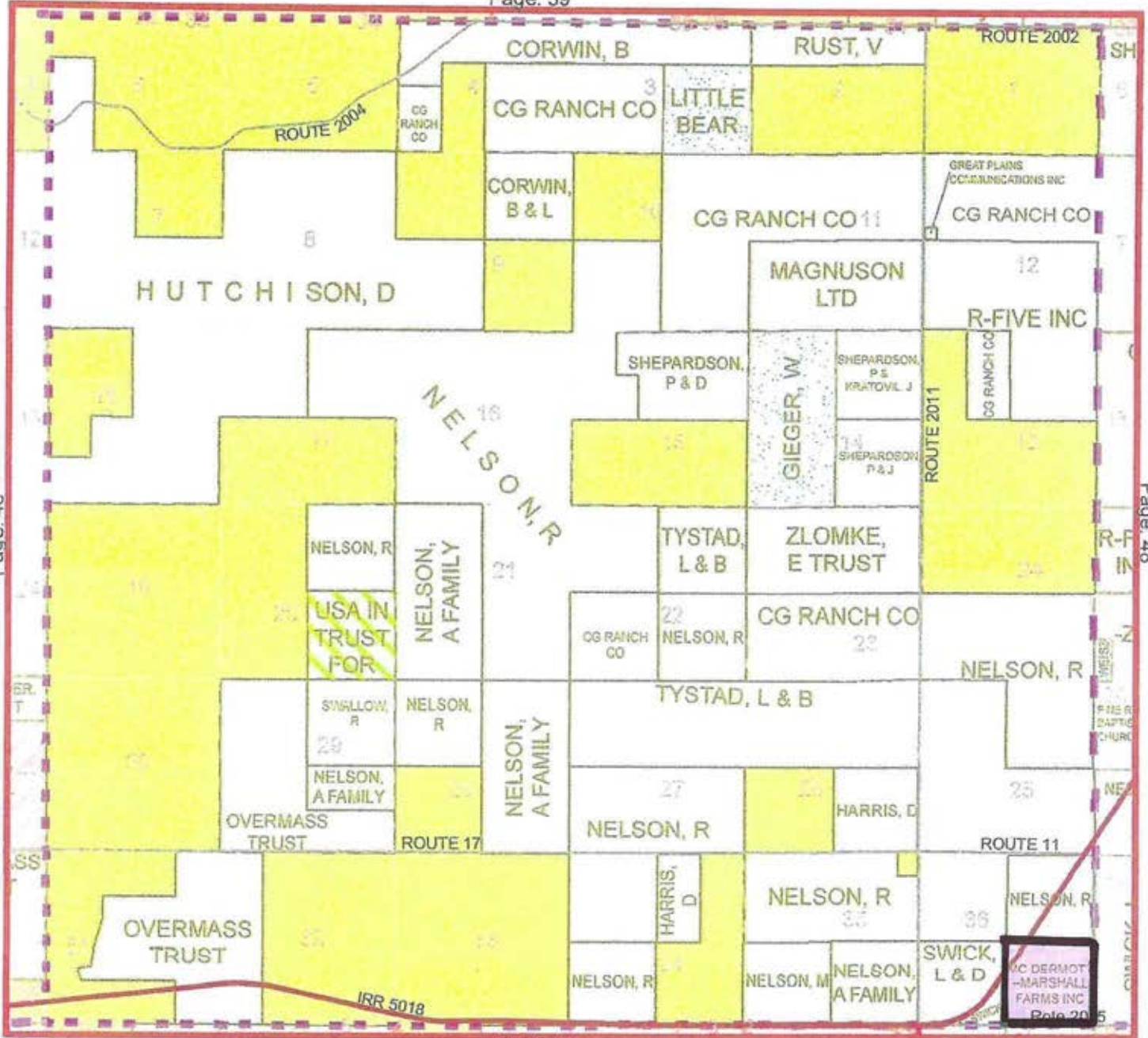
This map is for general reference only. The user acknowledges and accepts the limitations of this data, including the fact that the data is in a constant state of change, correction, and maintenance. This map does not represent a legal survey of the land. This map should not be used for legal proceedings or land purchase. Fall River County & Oglala Lakota County take no responsibility for any inaccuracies.

037N041W

Legend

- BADLANDS NAT'L PARK
- COMMUNITY
- NON-FEE LANDS
- CONTRACT FOR DEED
- PARTIAL INTEREST
- TRIBAL OWNED PART INTEREST
- PREVIOUSLY FEE, NOW IN TRUST
- TOWNSHIP SECTION





Page: 46

Page: 48

Oglala Lakota County Landownership

Data as of: August 2019

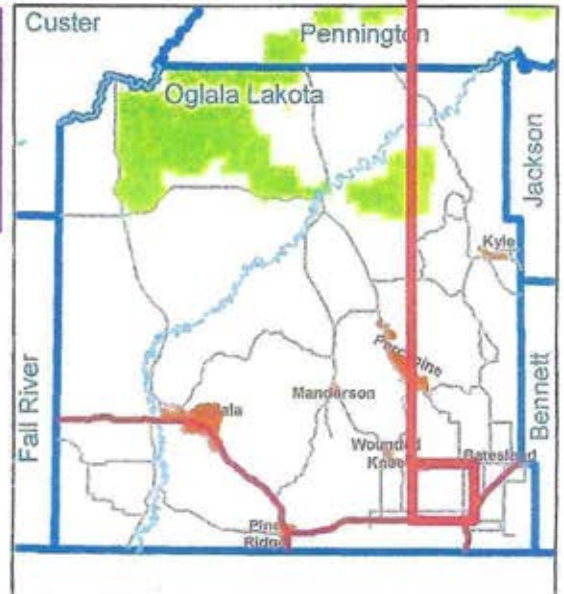


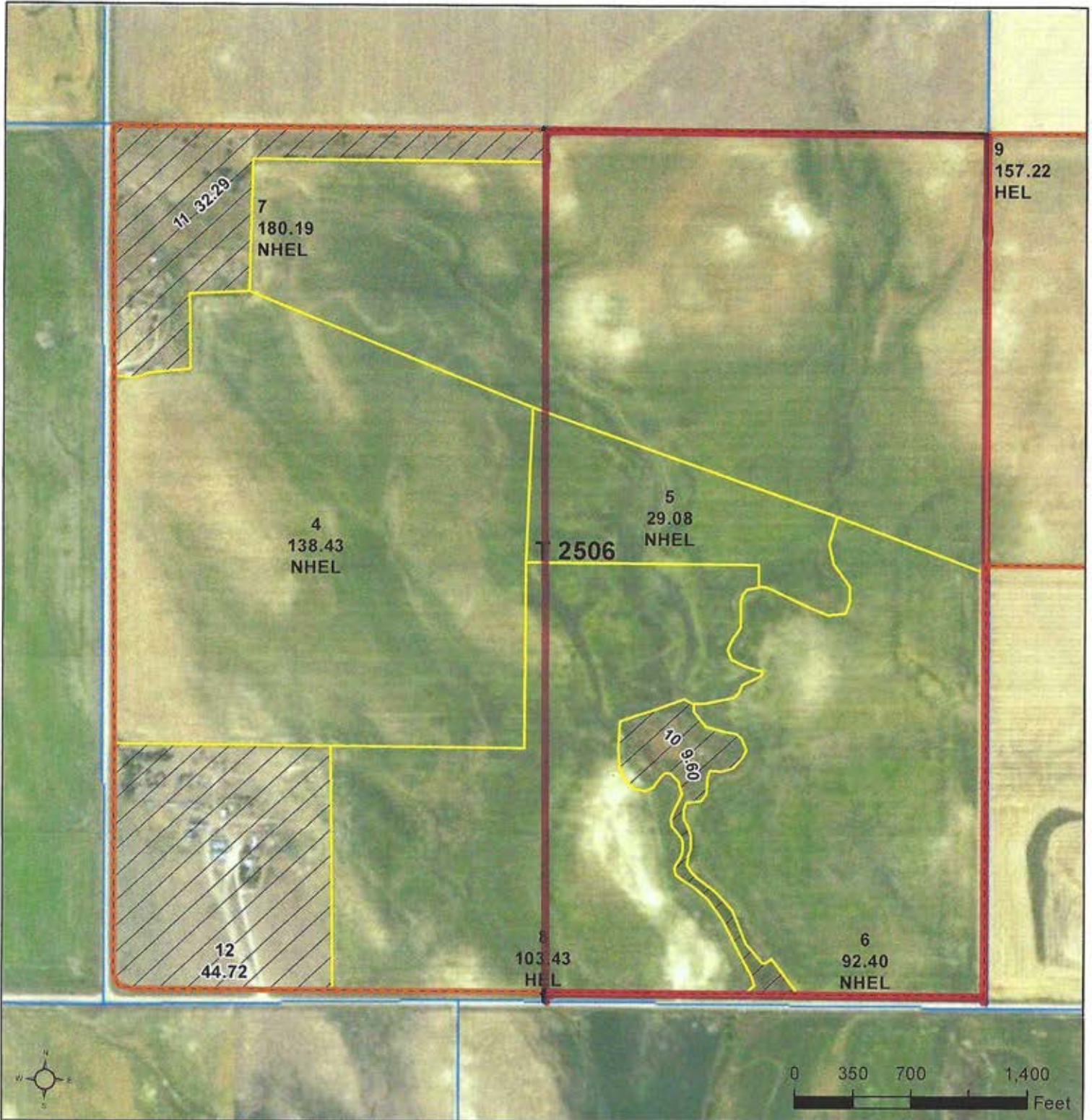
This map is for general reference only. The user acknowledges and accepts the limitations of this data, including the fact that the data is in a constant state of change, correction, and maintenance. This map does not represent a legal survey of the land. This map should not be used for legal proceedings or land purchase. Fall River County & Oglala Lakota County take no responsibility for any inaccuracies.

036N042W

Legend

- BADLANDS NAT'L PARK
- COMMUNITY
- NON-FEE LANDS
- CONTRACT FOR DEED
- PARTIAL INTEREST
- TRIBAL OWNED PART INTEREST
- PREVIOUSLY FEE, NOW IN TRUST
- TOWNSHIP
- SECTION





Common Land Unit Tract Boundary PLSS

Non-Cropland
 Cropland

Wetland Determination Identifiers

- Restricted Use
- Limited Restrictions
- Exempt from Conservation Compliance Provisions

Unless otherwise noted, crops listed below are:
 Intended for Grain Producer initial _____
 Corn = Yellow Date _____
 Soybeans = Common
 Wheat - HRS or HRW
 Sunflowers = Oil or Non-oil

2023 Program Year

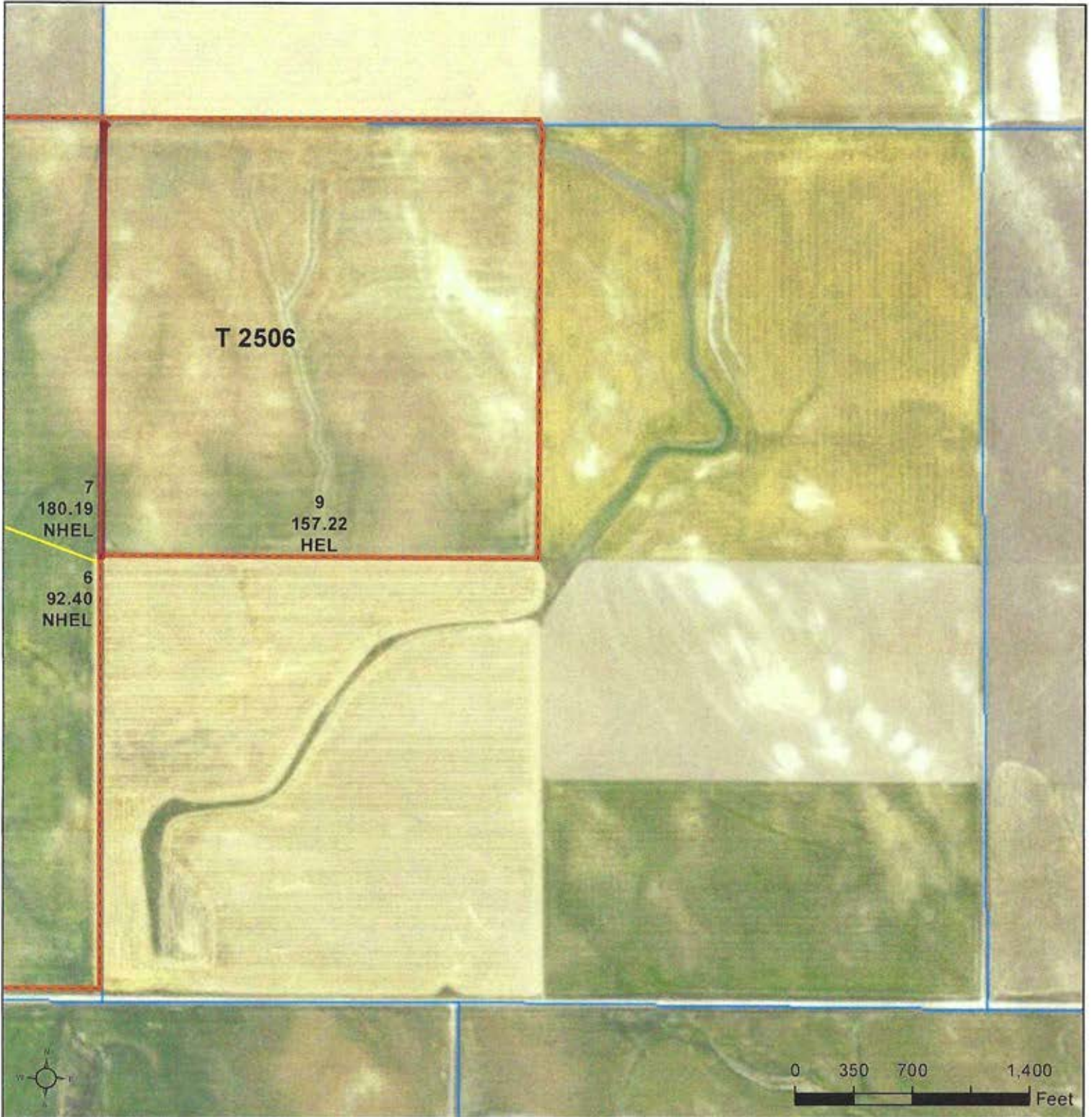
Map Created September 30, 2022

APPROXIMATELY
 310 ACRES
 FARMED

Farm 2293

34 -37N -41W

United States Department of Agriculture (USDA) Farm Service Agency (FSA) maps are for FSA Program administration only. This map does not represent a legal survey or reflect actual ownership; rather it depicts the information provided directly from the producer and/or National Agricultural Imagery Program (NAIP) imagery. The producer accepts the data 'as is' and assumes all risks associated with its use. USDA-FSA assumes no responsibility for actual or consequential damage incurred as a result of any user's reliance on this data outside FSA Programs. Wetland identifiers do not represent the size, shape, or specific determination of the area. Refer to your original determination (CPA-026 and attached maps) for exact boundaries and determinations or contact USDA Natural Resources Conservation Service (NRCS).



Common Land Unit PLSS

- Cropland
- Tract Boundary

Wetland Determination Identifiers

- Restricted Use
- ▼ Limited Restrictions
- Exempt from Conservation Compliance Provisions

Unless otherwise noted, crops listed below are:
 Non-irrigated
 Intended for Grain Producer initial _____
 Corn = Yellow Date _____
 Soybeans = Common
 Wheat - HRS or HRW
 Sunflowers = Oil or Non-oil

**157.22
FARMED**

2023 Program Year
 Map Created September 30, 2022

Farm 2293

35 -37N -41W

United States Department of Agriculture (USDA) Farm Service Agency (FSA) maps are for FSA Program administration only. This map does not represent a legal survey or reflect actual ownership; rather it depicts the information provided directly from the producer and/or National Agricultural Imagery Program (NAIP) imagery. The producer accepts the data 'as is' and assumes all risks associated with its use. USDA-FSA assumes no responsibility for actual or consequential damage incurred as a result of any user's reliance on this data outside FSA Programs. Wetland identifiers do not represent the size, shape, or specific determination of the area. Refer to your original determination (CPA-026 and attached maps) for exact boundaries and determinations or contact USDA Natural Resources Conservation Service (NRCS).



Common Land Unit Tract Boundary PLSS

- Non-Cropland
- Cropland

Wetland Determination Identifiers

- Restricted Use
- Limited Restrictions
- Exempt from Conservation Compliance Provisions

Unless otherwise noted, crops listed below are:

Non-irrigated Intended for Grain Producer initial _____
 Corn = Yellow Date _____
 Soybeans = Common
 Wheat - HRS or HRW
 Sunflowers = Oil or Non-oil

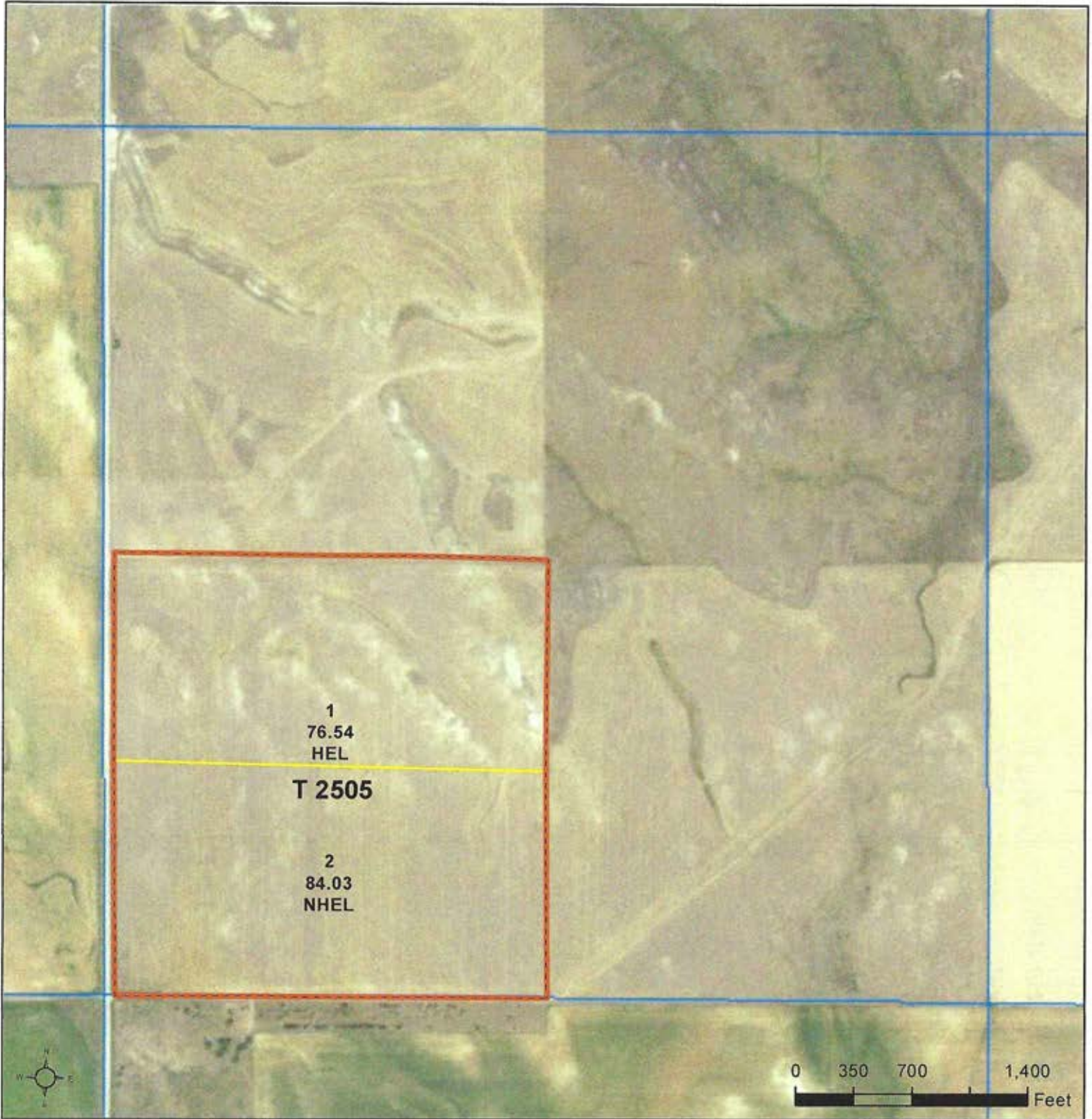
149.74 AC
FARMED

2023 Program Year
Map Created September 30, 2022

Farm 2293

36 -36N -42W

United States Department of Agriculture (USDA) Farm Service Agency (FSA) maps are for FSA Program administration only. This map does not represent a legal survey or reflect actual ownership; rather it depicts the information provided directly from the producer and/or National Agricultural Imagery Program (NAIP) imagery. The producer accepts the data 'as is' and assumes all risks associated with its use. USDA-FSA assumes no responsibility for actual or consequential damage incurred as a result of any user's reliance on this data outside FSA Programs. Wetland identifiers do not represent the size, shape, or specific determination of the area. Refer to your original determination (CPA-026 and attached maps) for exact boundaries and determinations or contact USDA Natural Resources Conservation Service (NRCS).



Common Land Unit PLSS

- Cropland
- Tract Boundary

Wetland Determination Identifiers

- Restricted Use
- ▼ Limited Restrictions
- Exempt from Conservation Compliance Provisions

Unless otherwise noted, crops listed below are:
 Non-irrigated
 Intended for Grain Producer initial _____
 Corn = Yellow Date _____
 Soybeans = Common
 Wheat - HRS or HRW
 Sunflowers = Oil or Non-oil

2023 Program Year
 Map Created September 30, 2022
APPROXIMATELY
160 ACRES
FARMED OR HAYED
Farm 2042
27 -37N -41W

United States Department of Agriculture (USDA) Farm Service Agency (FSA) maps are for FSA Program administration only. This map does not represent a legal survey or reflect actual ownership; rather it depicts the information provided directly from the producer and/or National Agricultural Imagery Program (NAIP) imagery. The producer accepts the data 'as is' and assumes all risks associated with its use. USDA-FSA assumes no responsibility for actual or consequential damage incurred as a result of any user's reliance on this data outside FSA Programs. Wetland identifiers do not represent the size, shape, or specific determination of the area. Refer to your original determination (CPA-026 and attached maps) for exact boundaries and determinations or contact USDA Natural Resources Conservation Service (NRCS).

EXHIBIT A
MARSHALL FAMILY 960 ACRE FARM
OGLALA LAKOTA COUNTY, SOUTH DAKOTA

LEGAL DESCRIPTION DEEDED LAND:

<u>Township 36N, Range 42W of 6th PM</u>	<u>ACRES</u>	<u>2022 TAXES</u>
Section 36: SE1/4	160.00	\$1,262.82
<u>Township 37N, Range 41W of 6th PM</u>		
Section 21: NE1/4	160.00	865.10
Section 27: SW1/4	160.00	667.36
Section 34: E1/2	320.00	2,197.22
Section 35: NW1/4	160.00	748.36
TOTAL DEEDED ACRES	960.00	\$5,740.86