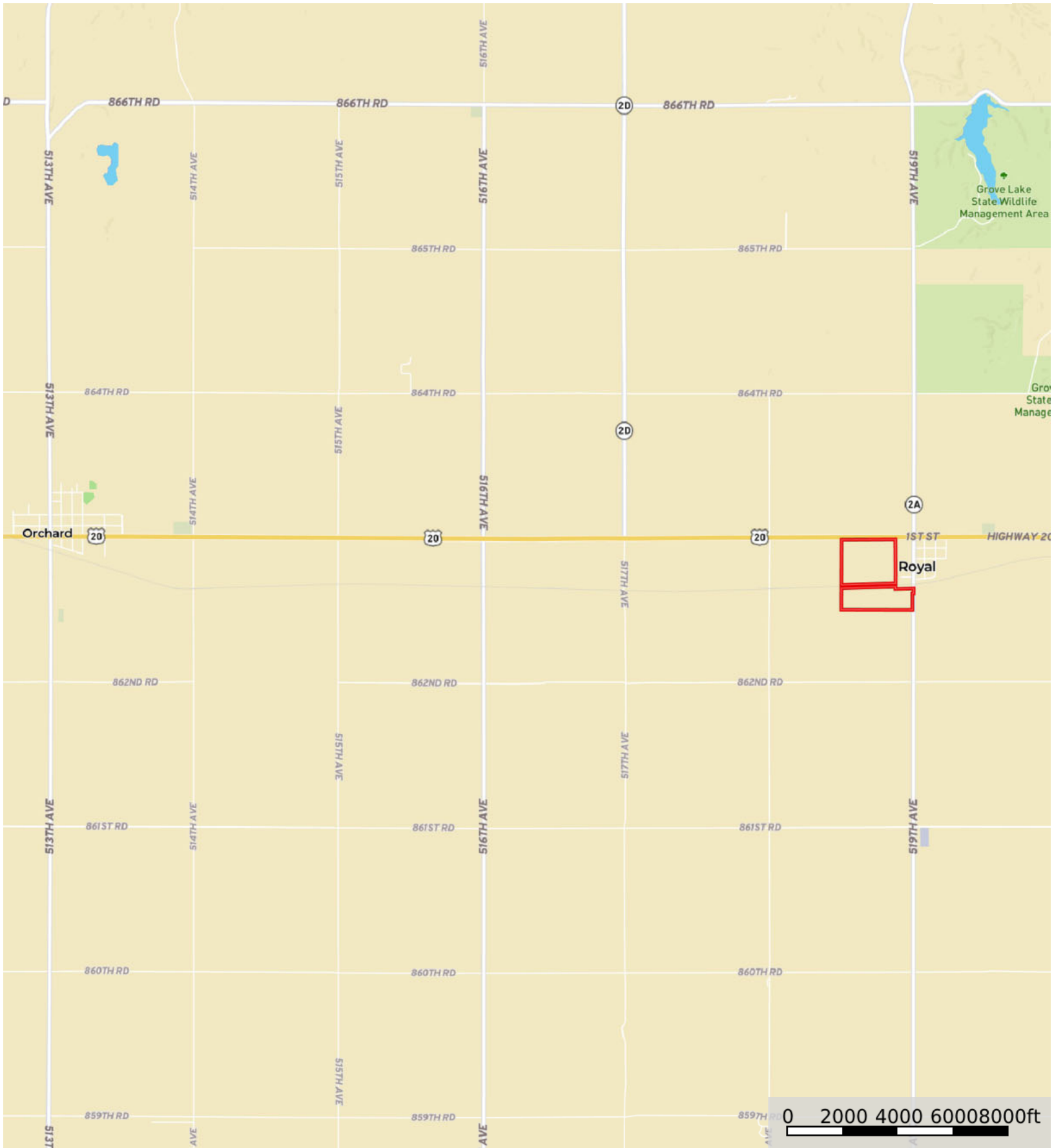



L-2300377

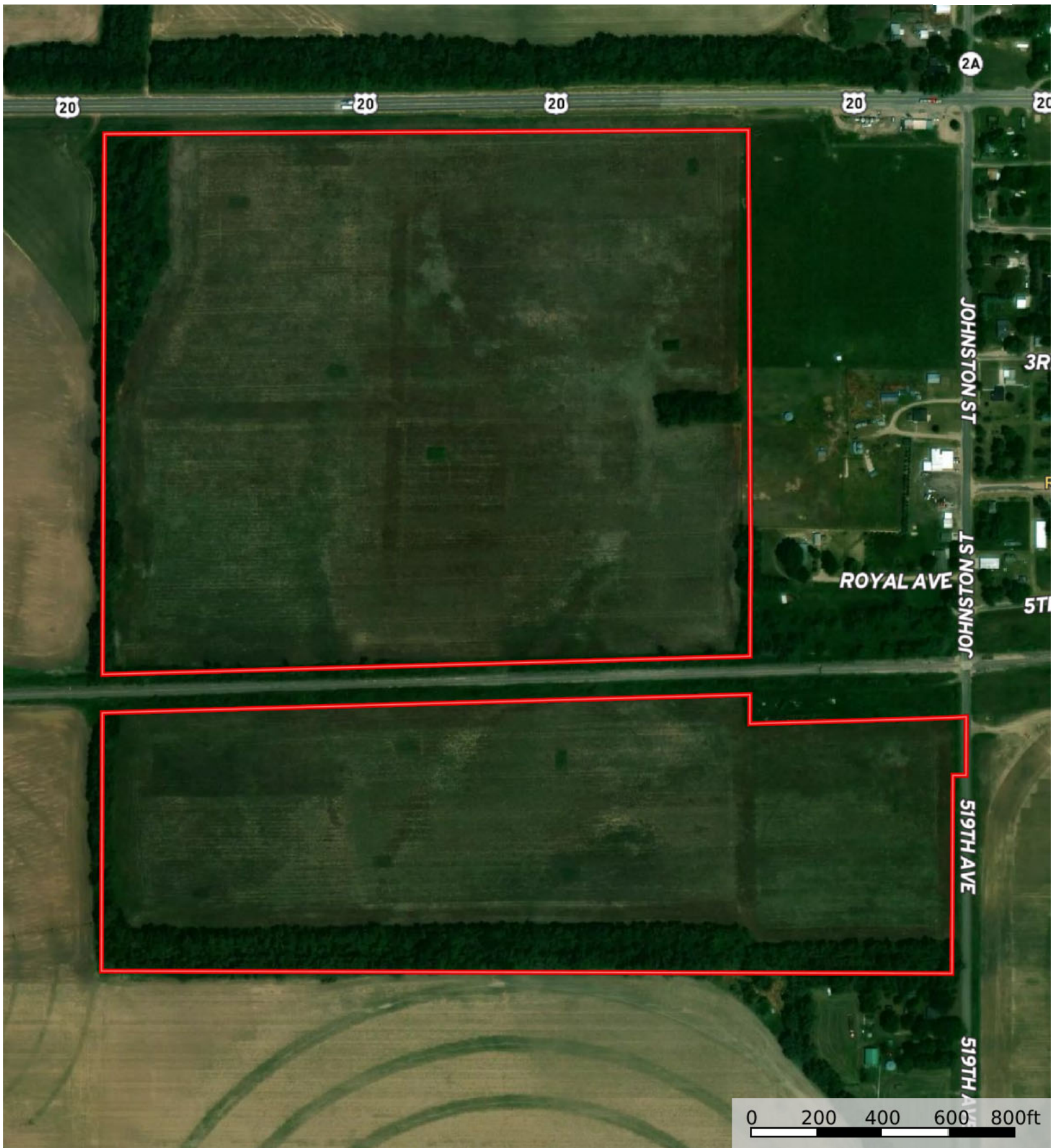
Antelope County, Nebraska, 120.78 AC +/-




 Boundary

L-2300377

Antelope County, Nebraska, 120.78 AC +/-




 Boundary

L-2300377

Antelope County, Nebraska, 120.78 AC +/-



 Boundary

|  All Polygons 120.87 ac

SOIL CODE	SOIL DESCRIPTION	ACRES	%	CPI	NCCPI	CAP
6700	Thurman loamy fine sand, 0 to 2 percent slopes	43.88	36.3	0	30	3e
6636	Boelus loamy fine sand, 0 to 2 percent slopes	34.9	28.87	0	56	3e
4178	Longford complex, 1 to 7 percent slopes	15.76	13.04	0	46	4e
6753	Nora silt loam, 2 to 6 percent slopes	11.64	9.63	52	78	2e
4179	Longford loam, 1 to 7 percent slopes	7.95	6.58	0	61	3e
6791	Loretto loam, 0 to 2 percent slopes	5.0	4.14	0	72	1
3163	Doger fine sand, 0 to 6 percent slopes	1.06	0.88	0	25	4e
3286	Paka loam, 2 to 6 percent slopes	0.68	0.56	0	63	2e
TOTALS		120.87(*)	100%	5.01	48.13	2.95

(*) Total acres may differ in the second decimal compared to the sum of each acreage soil. This is due to a round error because we only show the acres of each soil with two decimal.

|  Boundary 47.84 ac

SOIL CODE	SOIL DESCRIPTION	ACRES	%	CPI	NCCPI	CAP
6700	Thurman loamy fine sand, 0 to 2 percent slopes	20.53	42.91	0	30	3e
6636	Boelus loamy fine sand, 0 to 2 percent slopes	19.5	40.76	0	56	3e
6791	Loretto loam, 0 to 2 percent slopes	5.0	10.45	0	72	1
6753	Nora silt loam, 2 to 6 percent slopes	2.81	5.87	52	78	2e
TOTALS		47.84(*)	100%	3.05	47.81	2.73

(*) Total acres may differ in the second decimal compared to the sum of each acreage soil. This is due to a round error because we only show the acres of each soil with two decimal.

|  Boundary 73.03 ac

SOIL CODE	SOIL DESCRIPTION	ACRES	%	CPI	NCCPI	CAP
6700	Thurman loamy fine sand, 0 to 2 percent slopes	23.35	31.97	0	30	3e
4178	Longford complex, 1 to 7 percent slopes	15.76	21.58	0	46	4e
6636	Boelus loamy fine sand, 0 to 2 percent slopes	15.4	21.09	0	56	3e
6753	Nora silt loam, 2 to 6 percent slopes	8.83	12.09	52	78	2e
4179	Longford loam, 1 to 7 percent slopes	7.95	10.89	0	61	3e
3163	Doger fine sand, 0 to 6 percent slopes	1.06	1.45	0	25	4e
3286	Paka loam, 2 to 6 percent slopes	0.68	0.93	0	63	2e
TOTALS		73.03(*)	100%	6.29	48.35	3.1









(*) Total acres may differ in the second decimal compared to the sum of each acreage soil. This is due to a round error because we only show the acres of each soil with two decimal.

Capability Legend

Increased Limitations and Hazards

Decreased Adaptability and Freedom of Choice Users

Land, Capability

								
	1	2	3	4	5	6	7	8
'Wild Life'	•	•	•	•	•	•	•	•
Forestry	•	•	•	•	•	•	•	
Limited	•	•	•	•	•	•	•	
Moderate	•	•	•	•	•	•		
Intense	•	•	•	•	•			
Limited	•	•	•	•				
Moderate	•	•	•					
Intense	•	•						
Very Intense	•							

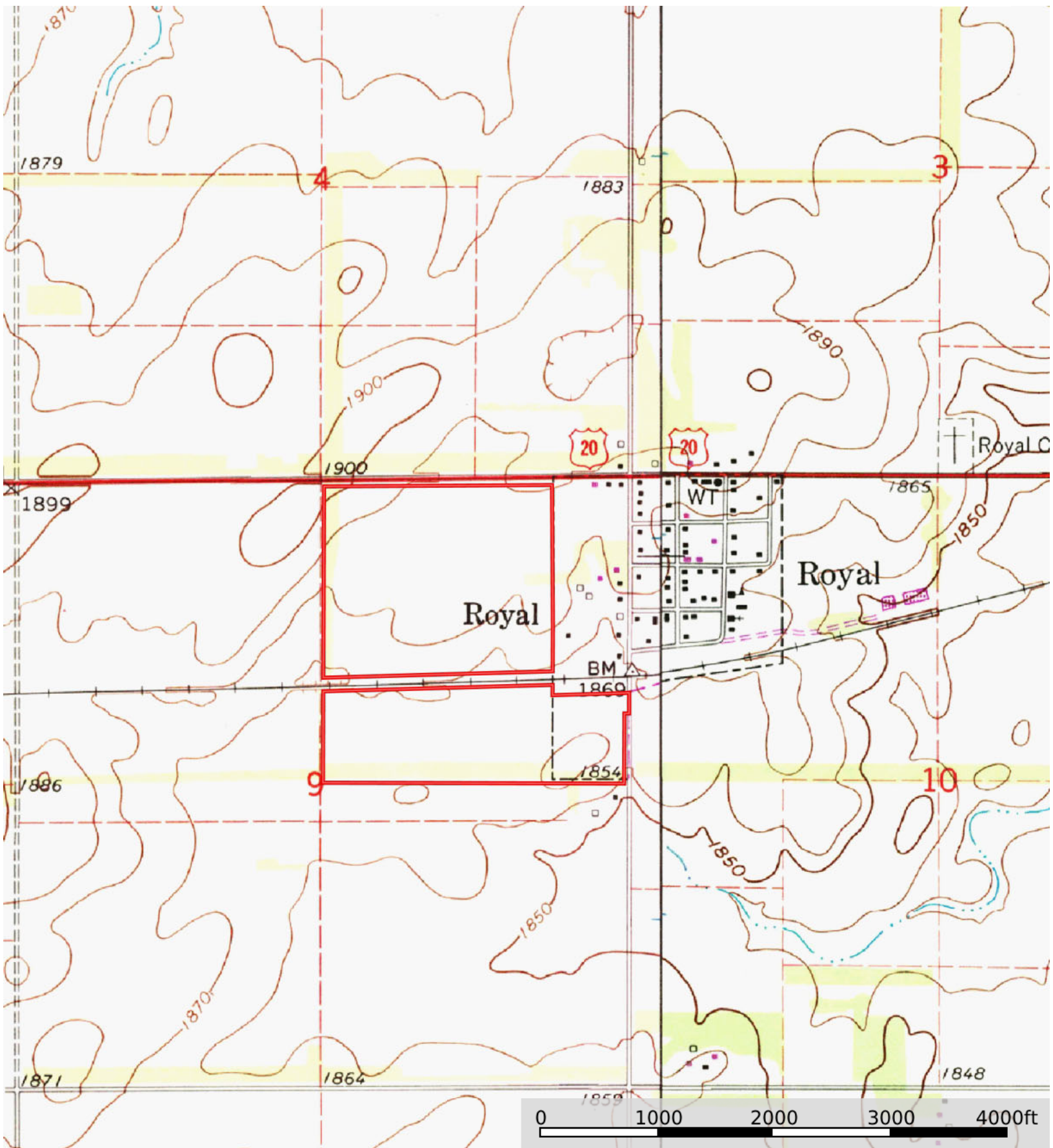
Grazing Cultivation


(c) climatic limitations (e) susceptibility to erosion

(s) soil limitations within the rooting zone (w) excess of water

L-2300377

Antelope County, Nebraska, 120.78 AC +/-



 Boundary