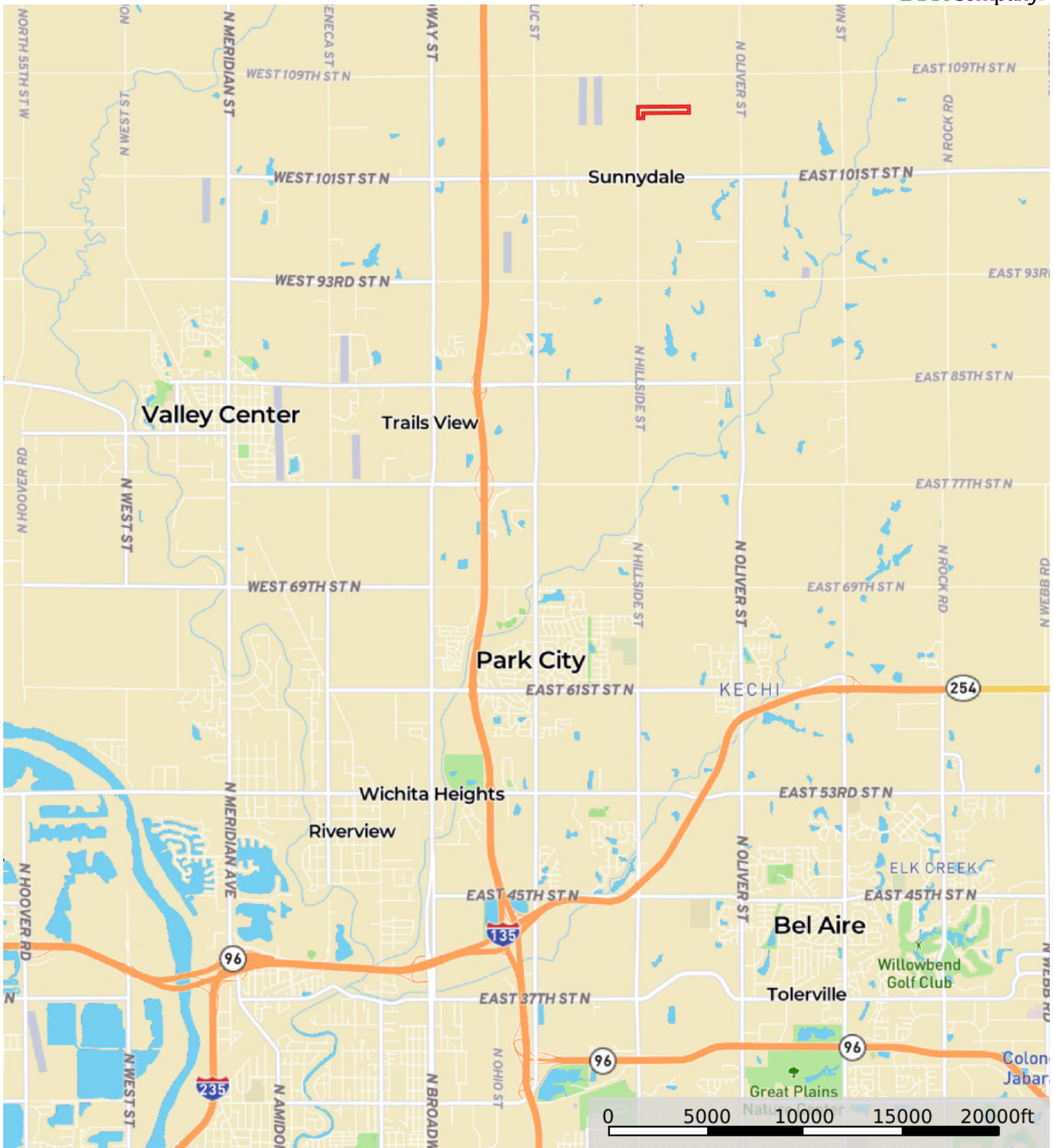


L-2300378

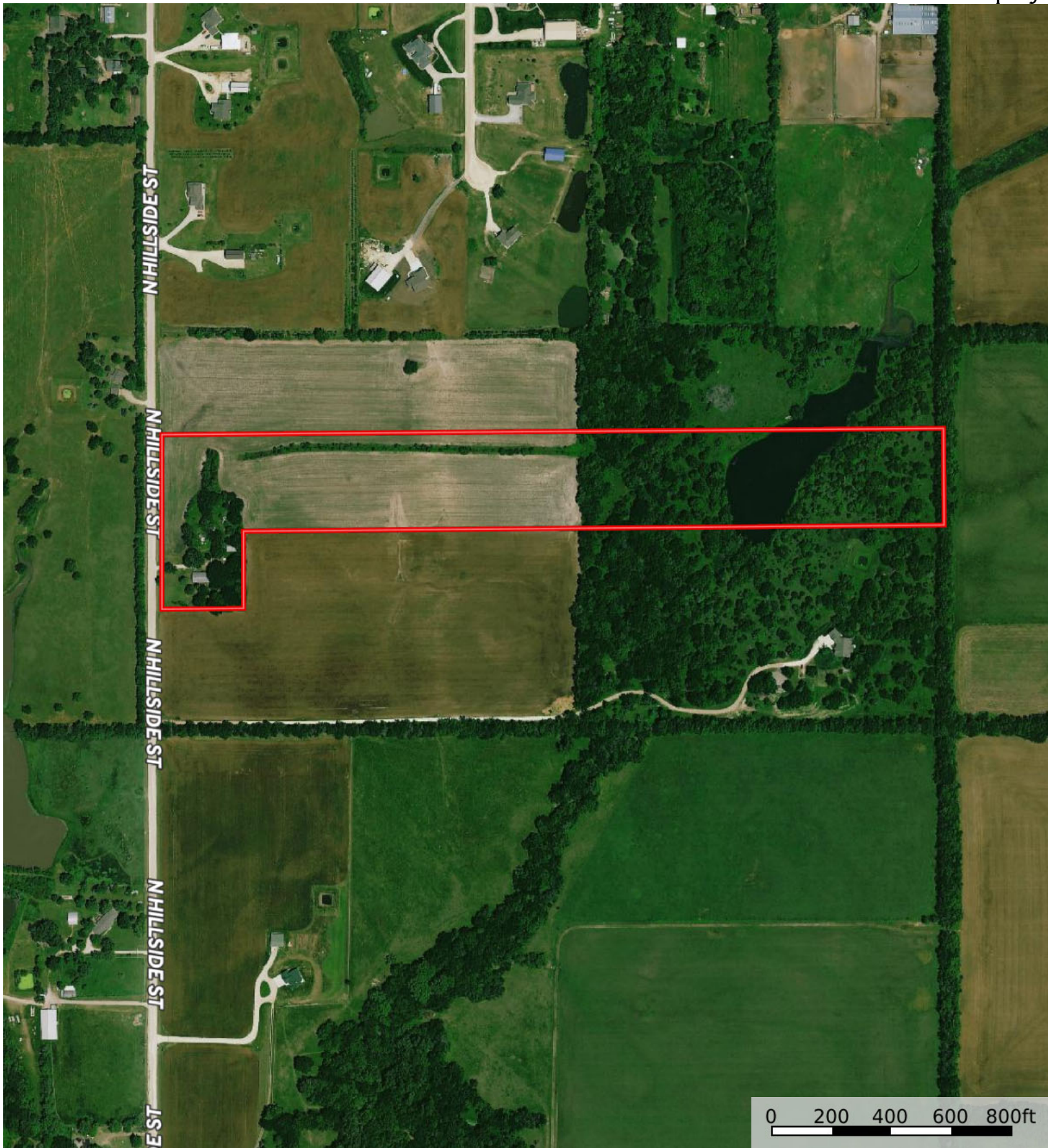
Sedgwick County, Kansas, 20.06 AC +/-




Boundary

L-2300378

Sedgwick County, Kansas, 20.06 AC +/-

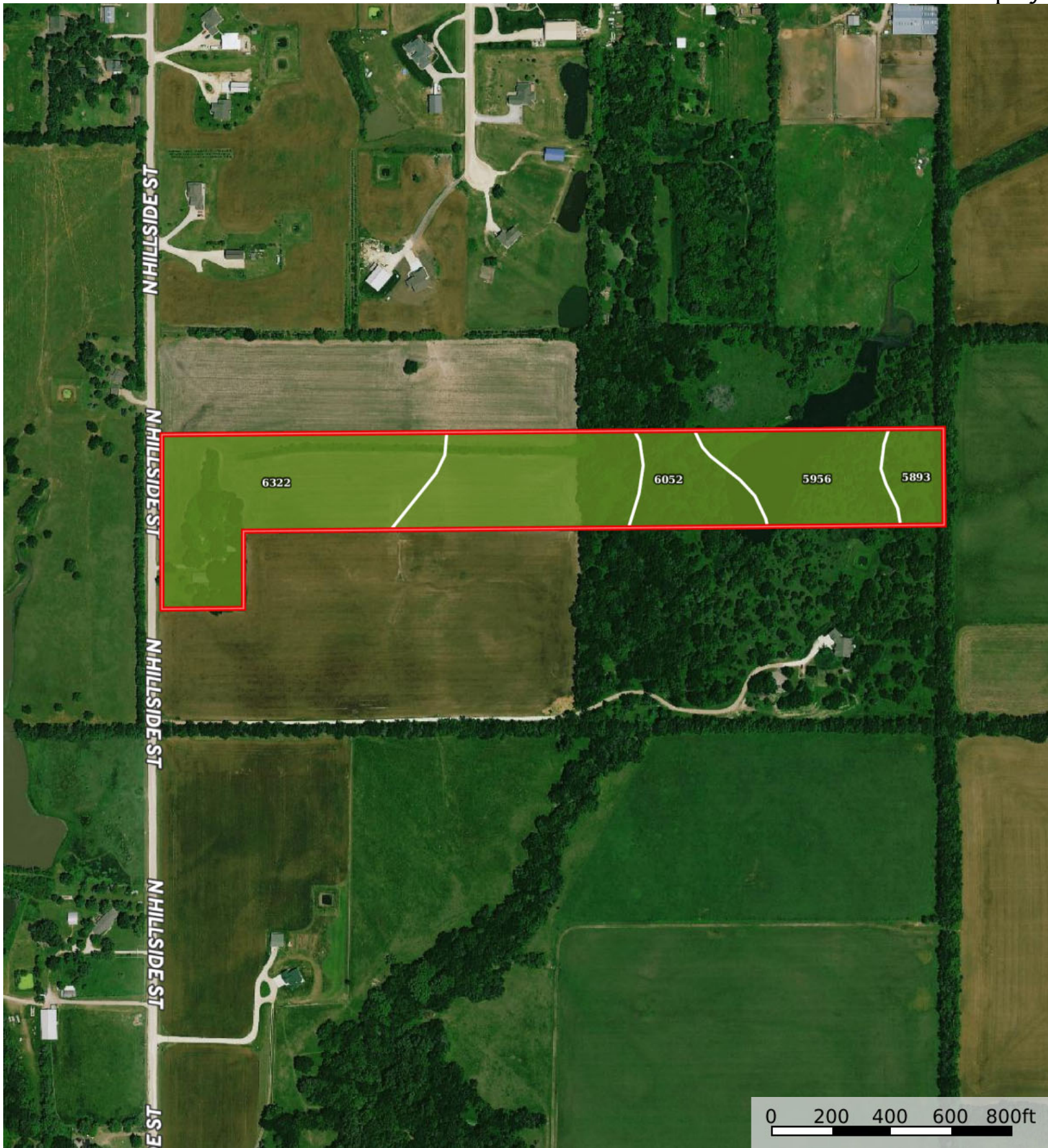



0 200 400 600 800ft

 Boundary

L-2300378

Sedgwick County, Kansas, 20.06 AC +/-



 Boundary

0 200 400 600 800ft

|  Boundary 21.18 ac

SOIL CODE	SOIL DESCRIPTION	ACRES	%	CPI	NCCPI	CAP
6322	Blanket silt loam, 0 to 1 percent slopes	8.25	38.97	0	64	2c
5893	Farnum loam, 1 to 3 percent slopes	6.68	31.55	0	64	2c
5956	Shellabarger sandy loam, 1 to 3 percent slopes	3.85	18.19	0	53	2e
6052	Elandco silt loam, occasionally flooded	2.4	11.34	0	75	2w
TOTALS		21.18(*)	100%	-	63.28	2.0









(*) Total acres may differ in the second decimal compared to the sum of each acreage soil. This is due to a round error because we only show the acres of each soil with two decimal.

Capability Legend

Increased Limitations and Hazards

Decreased Adaptability and Freedom of Choice Users

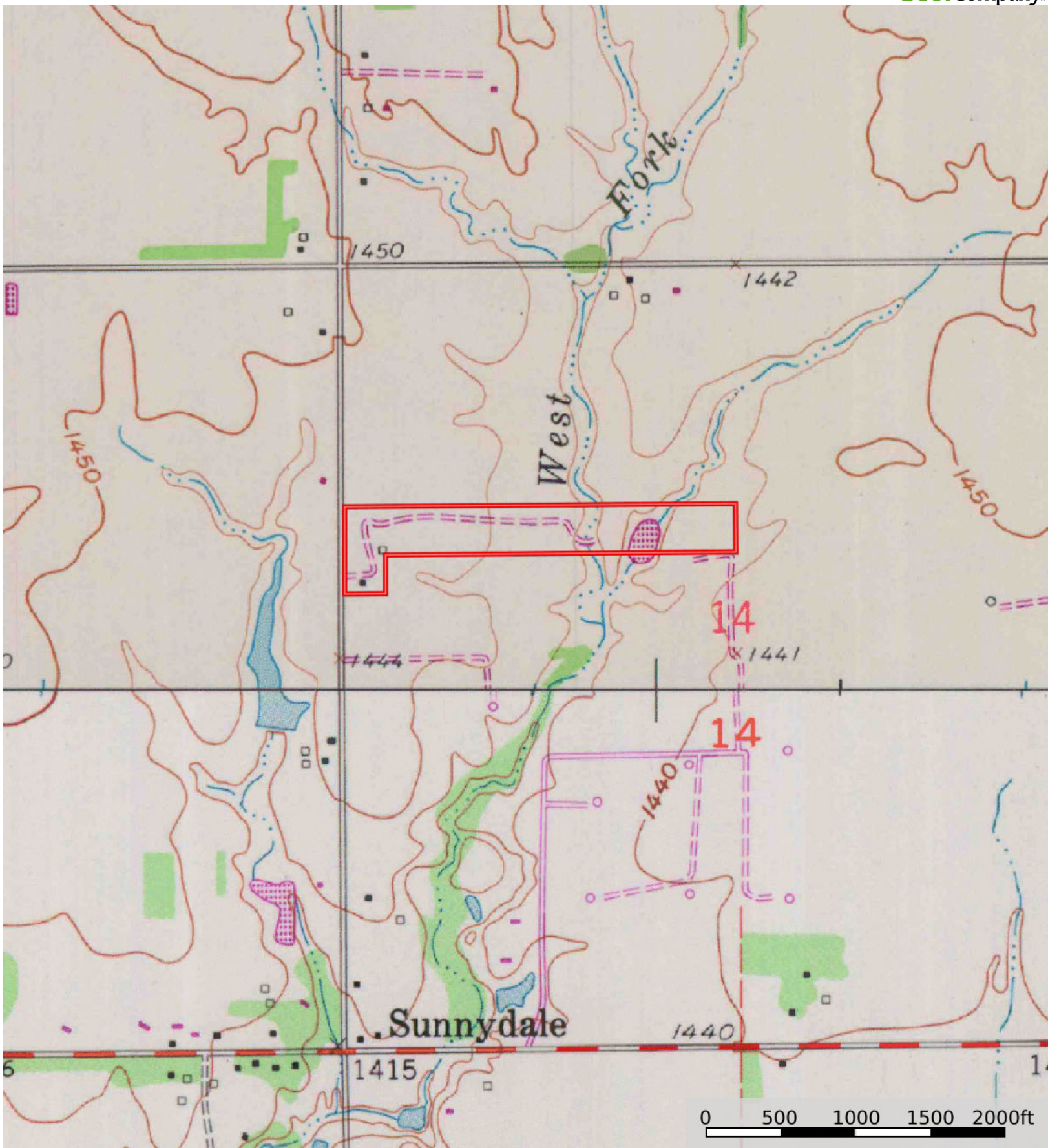
Land, Capability


								
	1	2	3	4	5	6	7	8
'Wild Life'	•	•	•	•	•	•	•	•
Forestry	•	•	•	•	•	•	•	
Limited	•	•	•	•	•	•	•	
Moderate	•	•	•	•	•	•		
Intense	•	•	•	•	•			
Limited	•	•	•	•				
Moderate	•	•	•					
Intense	•	•						
Very Intense	•							

Grazing Cultivation

(c) climatic limitations (e) susceptibility to erosion

(s) soil limitations within the rooting zone (w) excess of water



 Boundary