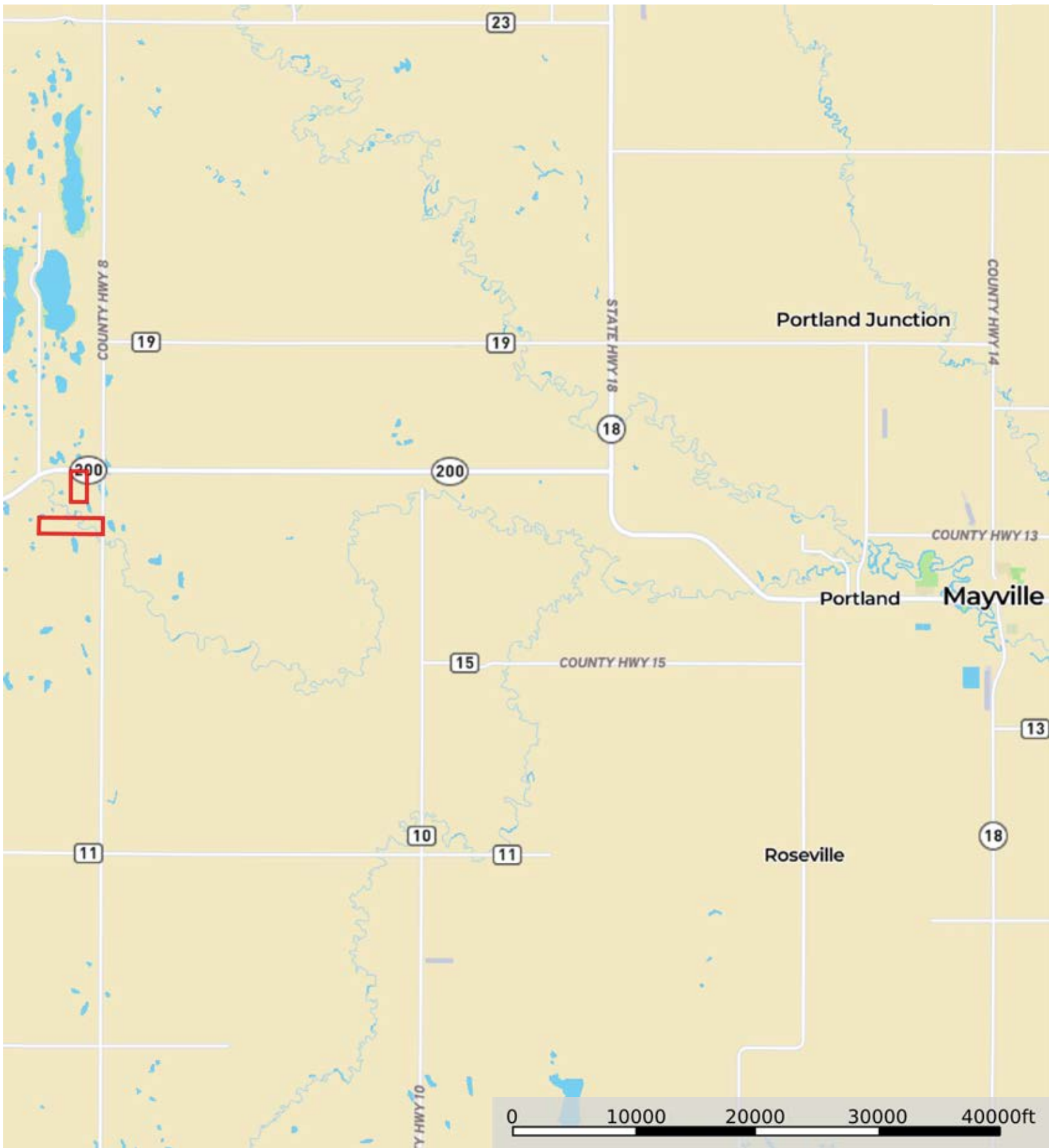



L-2300385

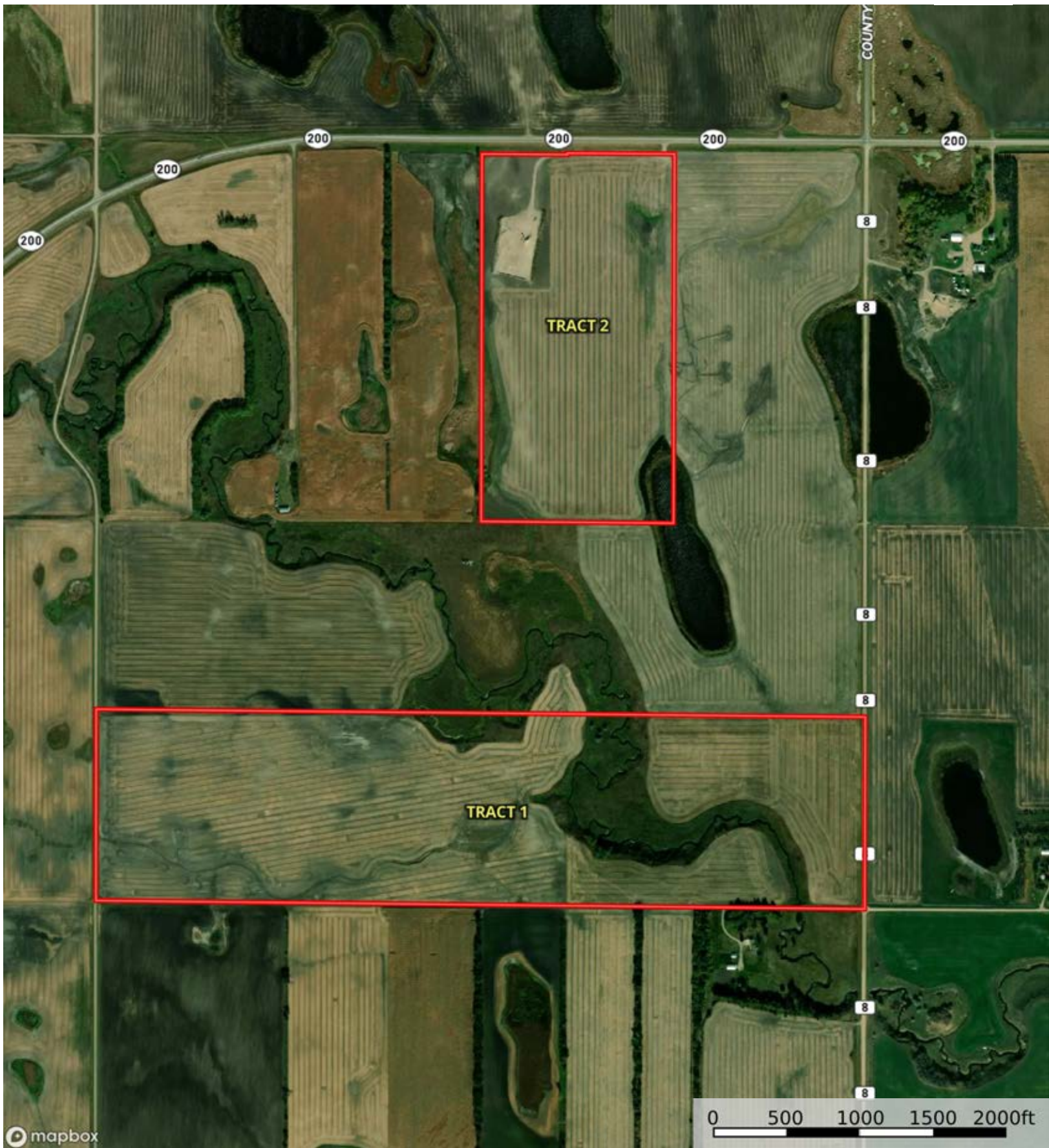
Steele County, North Dakota, 237.42 AC +/-



 Boundary

L-2300385

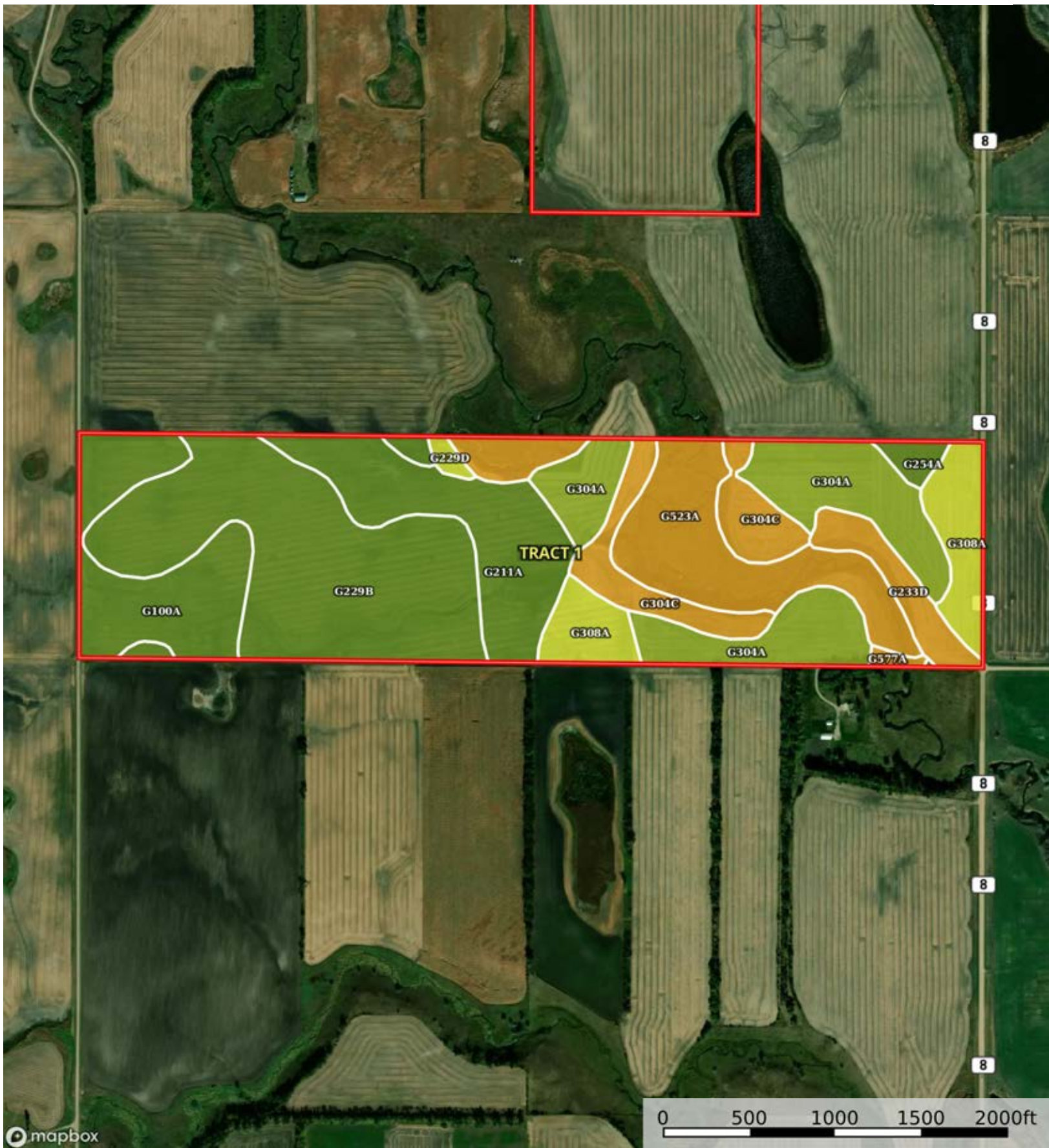
Steele County, North Dakota, 237.42 AC +/-



Boundary

L-2300385

Steele County, North Dakota, 237.42 AC +/-



Boundary

|  Boundary 159.51 ac

SOIL CODE	SOIL DESCRIPTION	ACRES	%	CPI	NCCPI	CAP
G229B	Heimdal-Emrick loams, 3 to 6 percent slopes	42.66	26.74	73	53	2e
G304A	Binford-Coe complex, 0 to 2 percent slopes	25.75	16.14	41	26	3e
G523A	Lowe-Fluvaquents, channeled complex, 0 to 2 percent slopes, frequently flooded	22.14	13.88	21	12	6w
G211A	Fram-Wyard loams, 0 to 3 percent slopes	19.45	12.19	77	51	2e
G100A	Hamerly-Tonka complex, 0 to 3 percent slopes	17.75	11.13	64	51	2e
G308A	Brantford loam, 0 to 2 percent slopes	11.74	7.36	49	34	4s
G304C	Coe-Binford complex, 6 to 9 percent slopes	11.35	7.11	30	23	6s
G233D	Esmond-Heimdal-Darnen loams, 6 to 15 percent slopes	5.53	3.47	47	49	6e
G254A	Divide loam, shaly, 0 to 2 percent slopes	1.65	1.03	58	40	2s
G229D	Heimdal-Esmond-Sisseton loams, 9 to 15 percent slopes	0.83	0.52	40	43	4e
G577A	Velva, moist-Fluvaquents, channeled fine sandy loams, 0 to 2 percent slopes, frequently flooded	0.61	0.38	37	24	6w
G596B	Darnen loam, 2 to 6 percent slopes	0.05	0.03	90	64	2e
TOTALS		159.51(*)	100%	53.91	38.51	3.31









(*) Total acres may differ in the second decimal compared to the sum of each acreage soil. This is due to a round error because we only show the acres of each soil with two decimal.

Capability Legend

Increased Limitations and Hazards

Decreased Adaptability and Freedom of Choice Users

Land, Capability

								
	1	2	3	4	5	6	7	8
'Wild Life'	•	•	•	•	•	•	•	•
Forestry	•	•	•	•	•	•	•	
Limited	•	•	•	•	•	•	•	
Moderate	•	•	•	•	•	•		
Intense	•	•	•	•	•			
Limited	•	•	•	•				
Moderate	•	•	•					
Intense	•	•						
Very Intense	•							

Grazing Cultivation

(c) climatic limitations (e) susceptibility to erosion

(s) soil limitations within the rooting zone (w) excess of water

L-2300385

Steele County, North Dakota, 237.42 AC +/-



Boundary

|  Boundary 76.71 ac

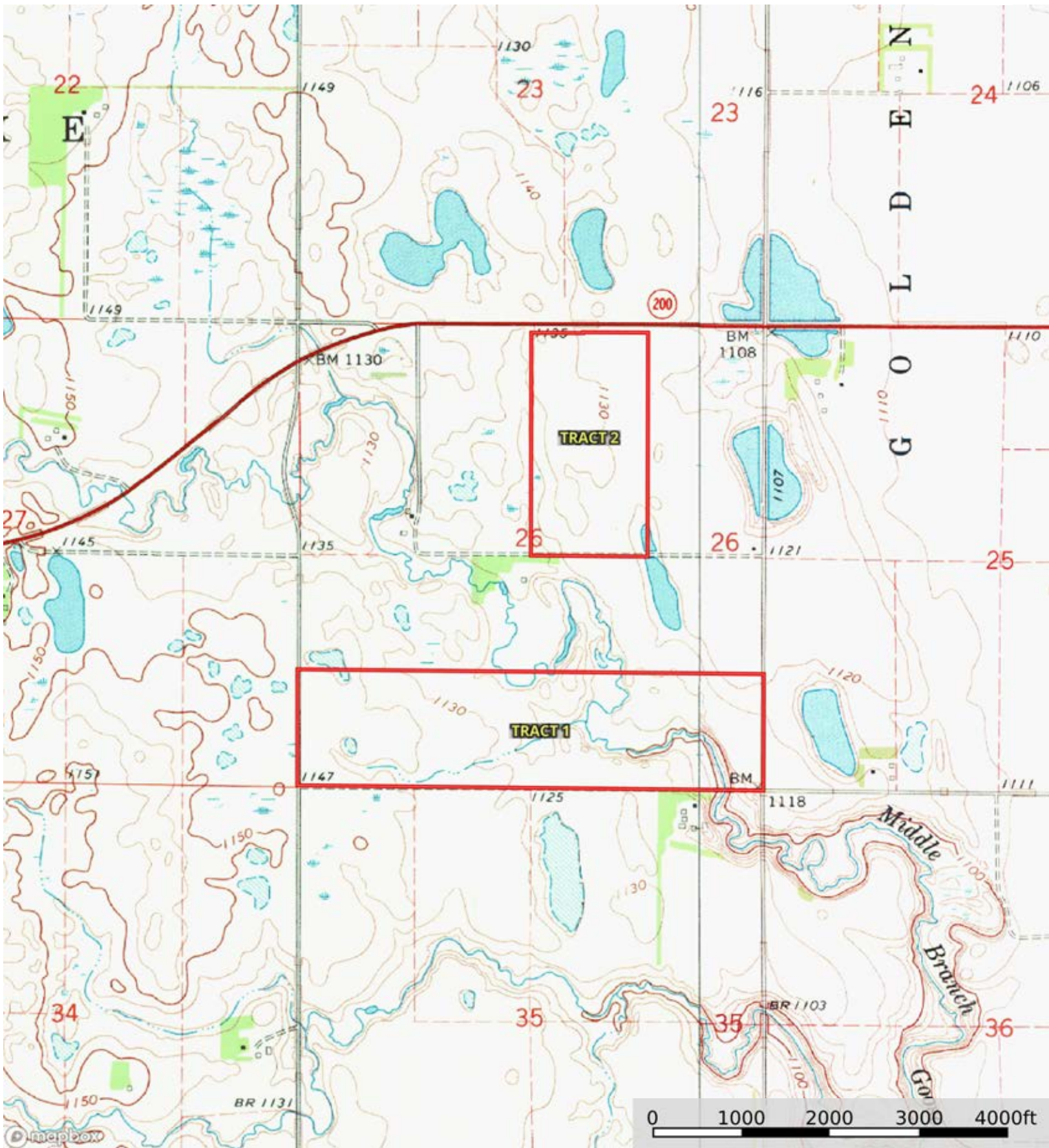
SOIL CODE	SOIL DESCRIPTION	ACRES	%	CPI	NCCPI	CAP
G308A	Brantford loam, 0 to 2 percent slopes	42.29	55.12	49	34	4s
G304C	Coe-Binford complex, 6 to 9 percent slopes	11.71	15.26	30	23	6s
G304A	Binford-Coe complex, 0 to 2 percent slopes	11.34	14.78	41	26	3e
G304B	Binford-Coe complex, 2 to 6 percent slopes	4.22	5.5	39	23	3e
G521A	Low loam, 0 to 1 percent slopes, occasionally flooded	3.62	4.72	41	32	4w
G12A	Vallers, saline-Parnell complex, 0 to 1 percent slopes	1.77	2.31	32	23	4w
G4A	Southam silty clay loam, 0 to 1 percent slopes	1.76	2.29	9	6	8w
TOTALS		76.71(*)	100%	42.67	29.54	4.19

(*) Total acres may differ in the second decimal compared to the sum of each acreage soil. This is due to a round error because we only show the acres of each soil with two decimal.



L-2300385

Steele County, North Dakota, 237.42 AC +/-



Boundary



The information contained herein was obtained from sources deemed to be reliable. Land id™ Services makes no warranties or guarantees as to the completeness or accuracy thereof.