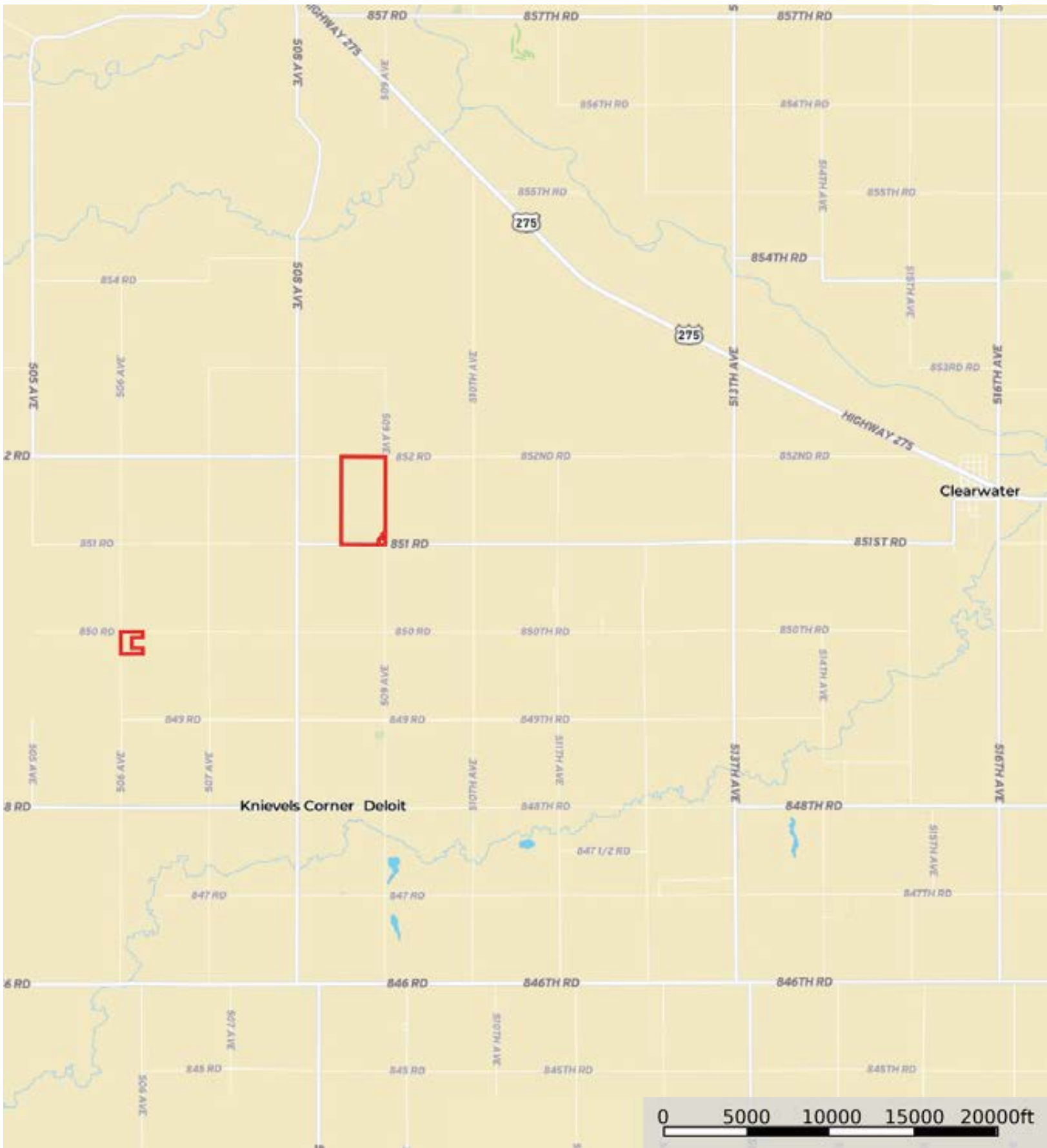


L-2300391

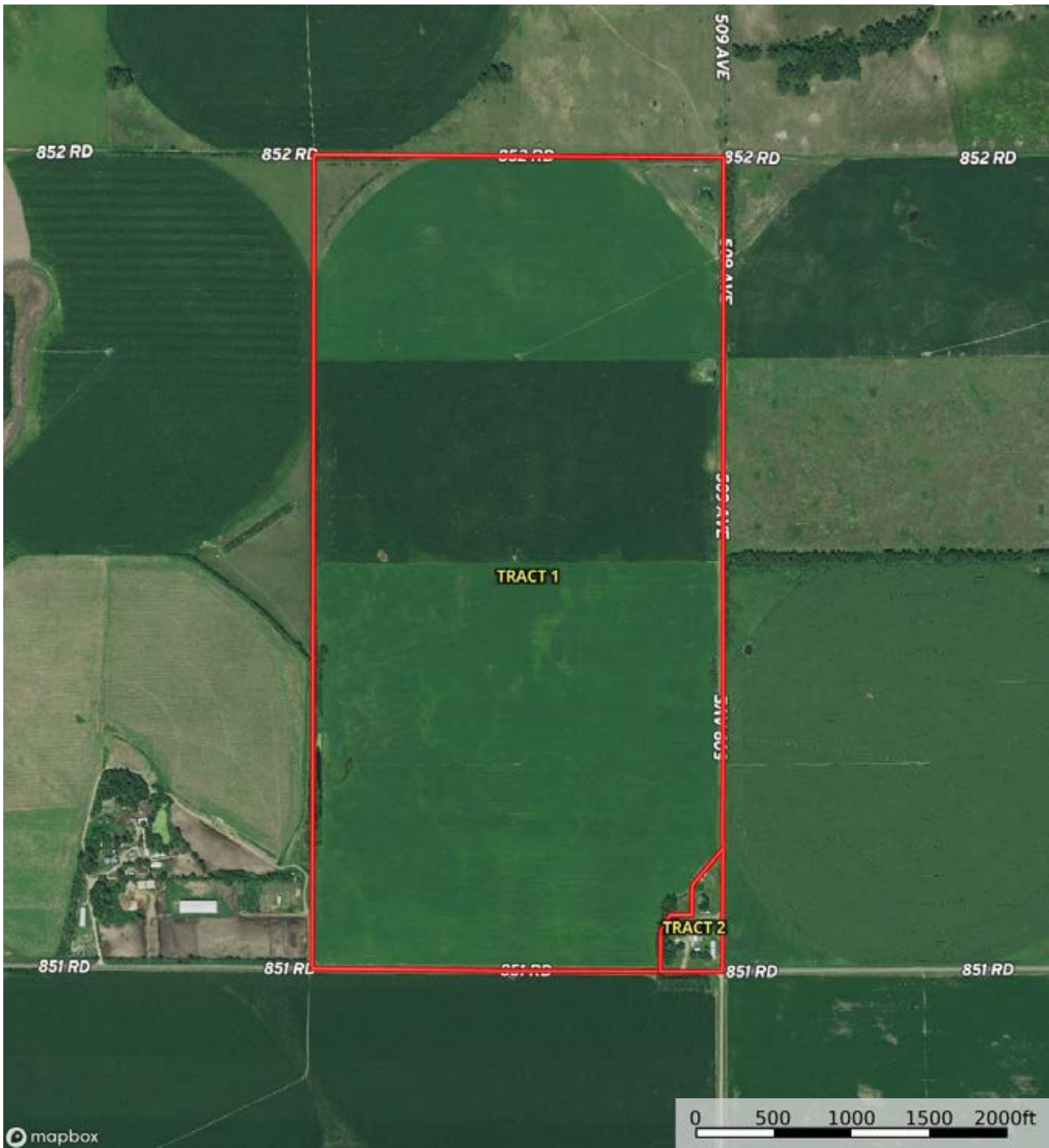
Holt County, Nebraska, 349.84 AC +/-




 Boundary

L-2300391

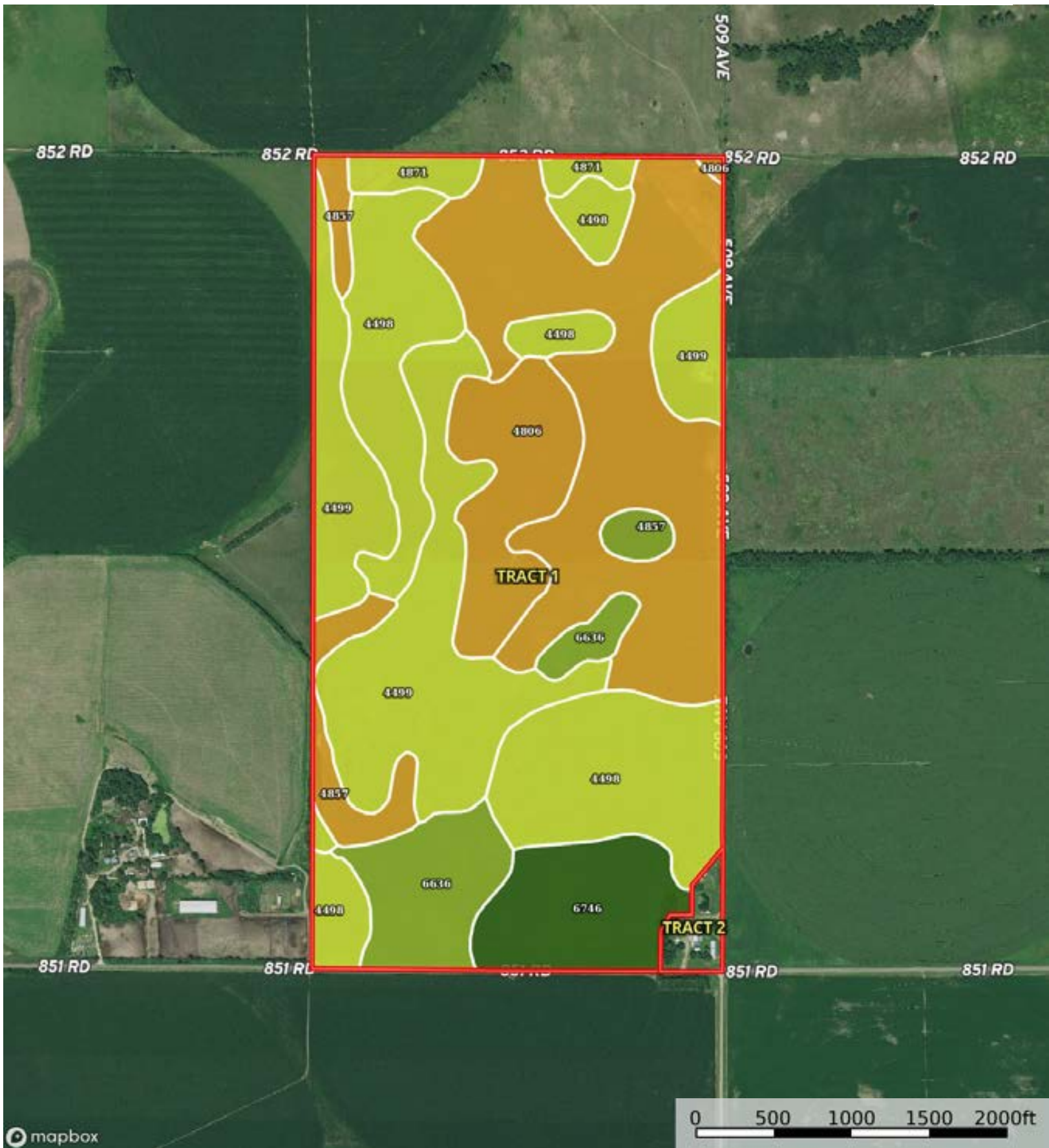
Holt County, Nebraska, 349.84 AC +/-



 Boundary

L-2300391

Holt County, Nebraska, 349.84 AC +/-



Boundary

|  Boundary 314.62 ac

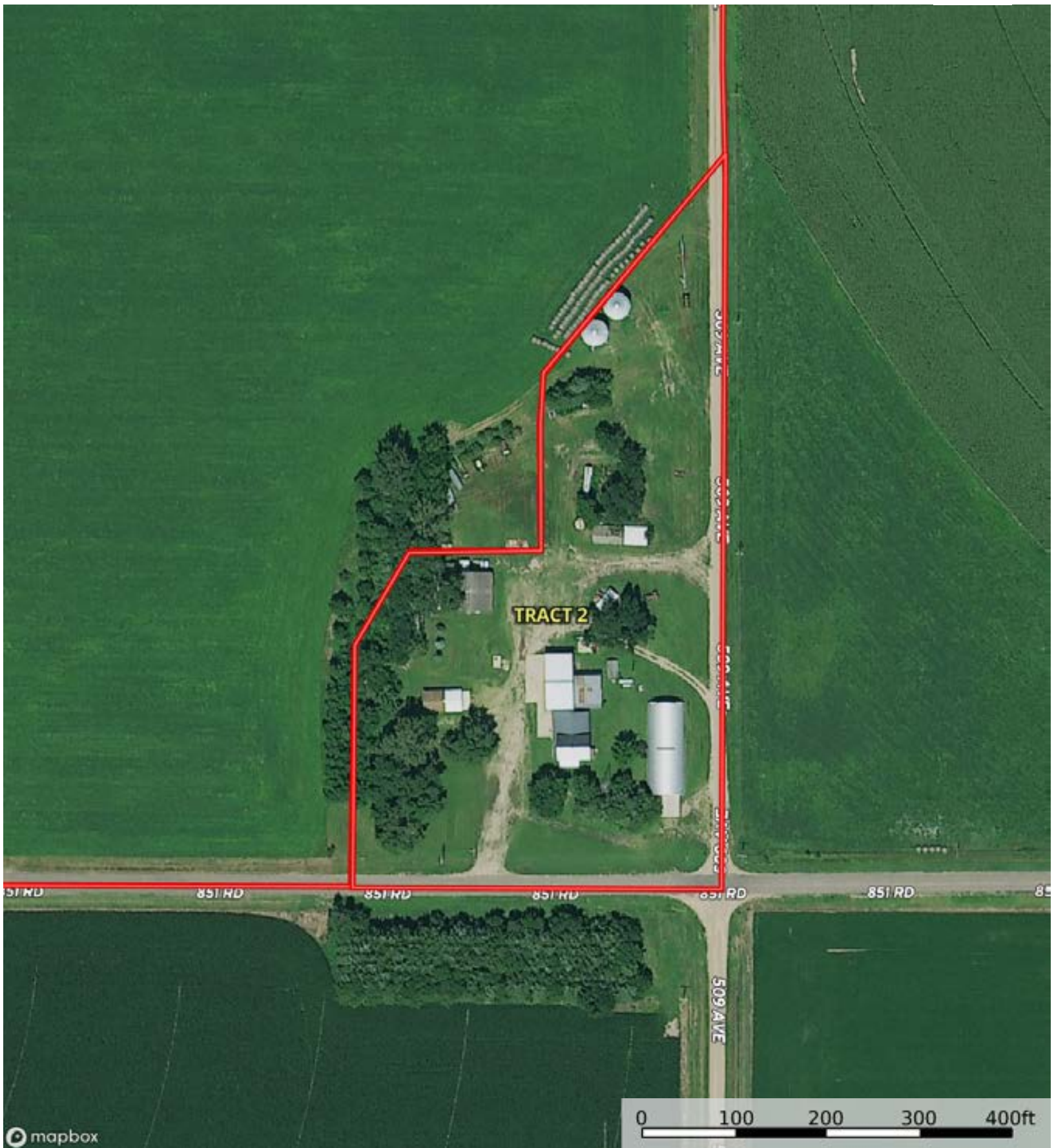
SOIL CODE	SOIL DESCRIPTION	ACRES	%	CPI	NCCPI	CAP
4857	Valentine-Dunday loamy fine sands, moist, 3-9 percent slopes	93.17	29.61	0	24	6e
4498	Dunday loamy sand, 0 to 3 percent slopes	71.31	22.67	0	25	4e
4499	Dunday loamy sand, 3 to 6 percent slopes	70.15	22.3	0	24	4e
6636	Boelus loamy fine sand, 0 to 2 percent slopes	25.18	8.0	0	56	3e
4806	Valentine fine sand, rolling, 9 to 24 percent slopes, moist	24.94	7.93	0	17	6e
6746	Nora silt loam, 0 to 2 percent slopes	22.55	7.17	51	81	1
4871	Valentine-Dunday loamy fine sands, 0 to 3 percent slopes	7.32	2.33	0	24	4e
TOTALS		314.62(*)	100%	3.66	30.32	4.46

(*) Total acres may differ in the second decimal compared to the sum of each acreage soil. This is due to a round error because we only show the acres of each soil with two decimal.



L-2300391

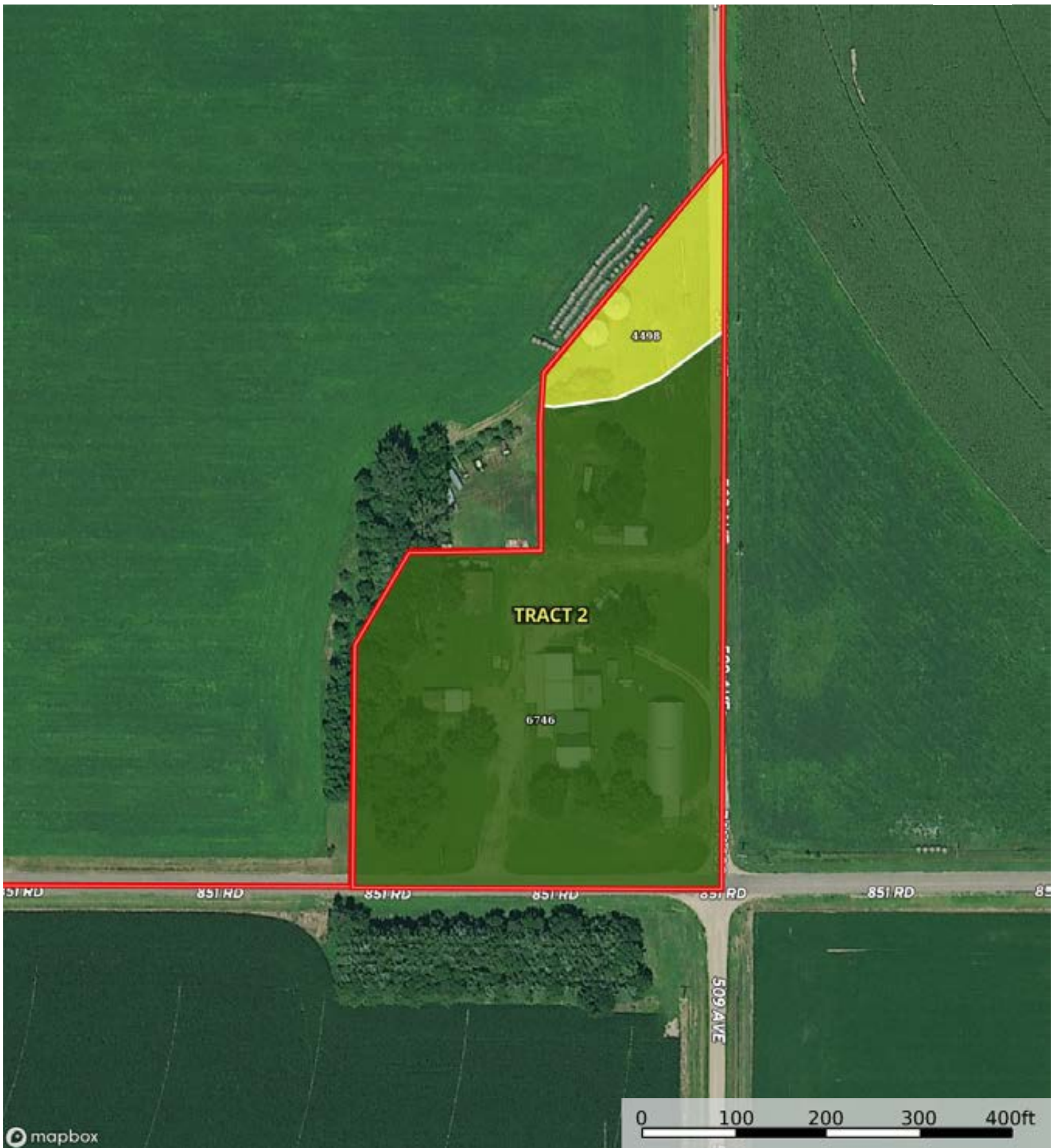
Holt County, Nebraska, 349.84 AC +/-




Boundary

L-2300391

Holt County, Nebraska, 349.84 AC +/-



 Boundary



The information contained herein was obtained from sources deemed to be reliable. Land id™ Services makes no warranties or guarantees as to the completeness or accuracy thereof.

|  Boundary 4.69 ac

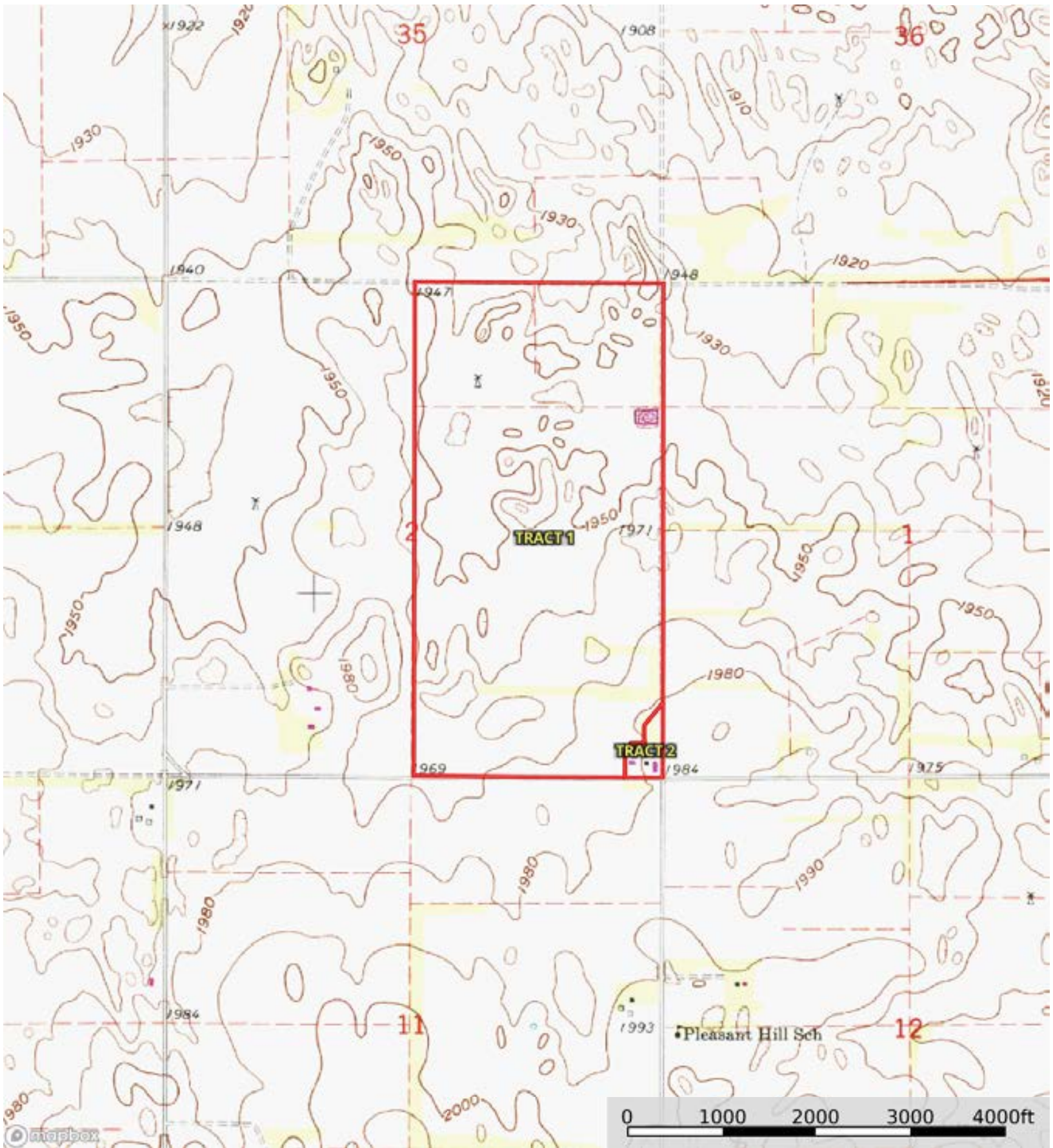
SOIL CODE	SOIL DESCRIPTION	ACRES	%	CPI	NCCPI	CAP
6746	Nora silt loam, 0 to 2 percent slopes	4.11	87.45	51	81	1
4498	Dunday loamy sand, 0 to 3 percent slopes	0.58	12.34	0	25	4e
TOTALS		4.69(*)	100%	44.6	73.92	1.37


(*) Total acres may differ in the second decimal compared to the sum of each acreage soil. This is due to a round error because we only show the acres of each soil with two decimal.



L-2300391

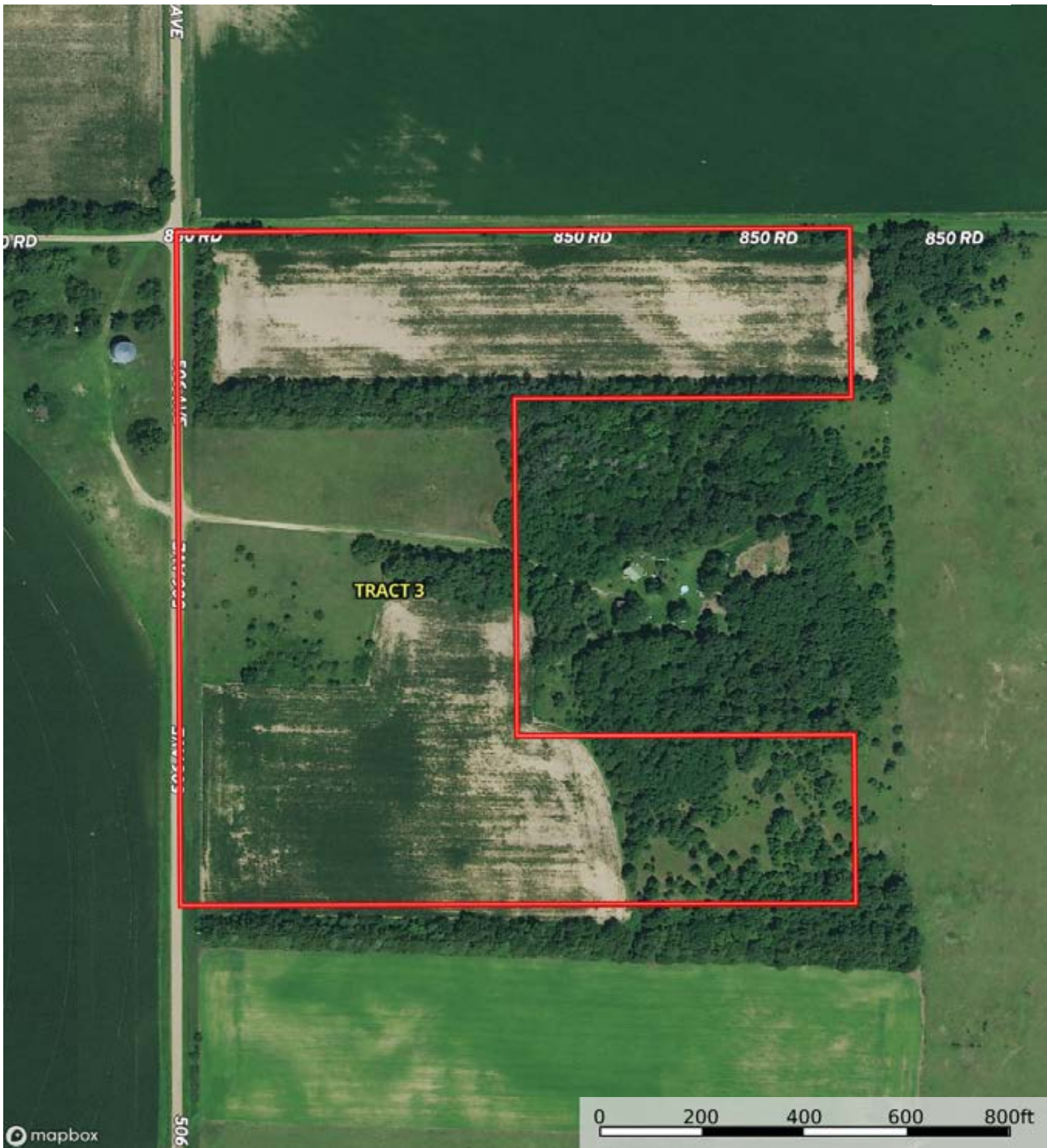
Holt County, Nebraska, 349.84 AC +/-



 Boundary

L-2300391

Holt County, Nebraska, 349.84 AC +/-



Boundary

L-2300391

Holt County, Nebraska, 349.84 AC +/-



mapbox

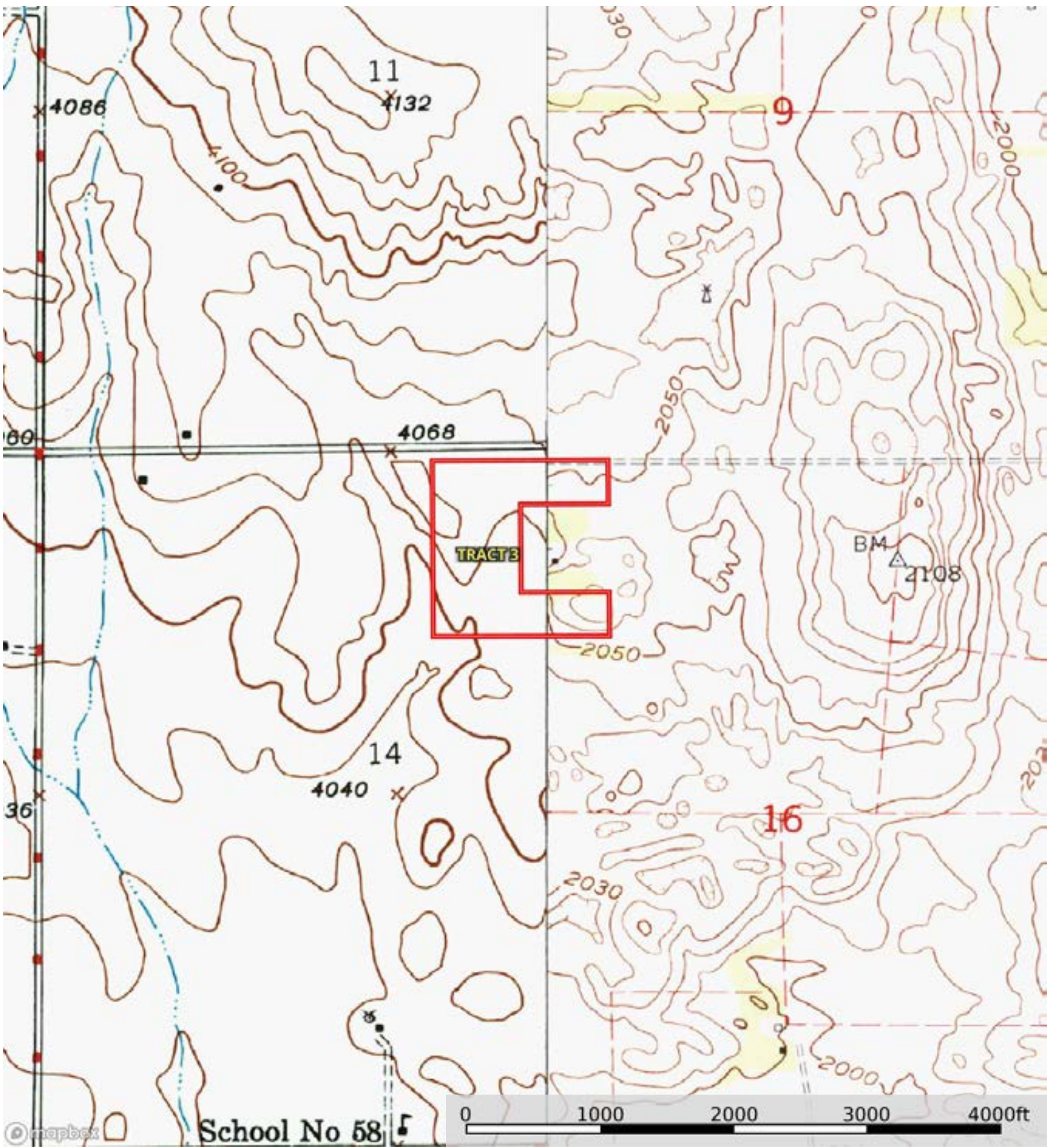
Boundary

|  Boundary 29.97 ac

SOIL CODE	SOIL DESCRIPTION	ACRES	%	CPI	NCCPI	CAP
4857	Valentine-Dunday loamy fine sands, moist, 3-9 percent slopes	18.53	61.83	0	24	6e
6636	Boelus loamy fine sand, 0 to 2 percent slopes	8.73	29.13	0	56	3e
4806	Valentine fine sand, rolling, 9 to 24 percent slopes, moist	2.71	9.04	0	17	6e
TOTALS		29.97(*)	100%	-	32.69	5.13

(*) Total acres may differ in the second decimal compared to the sum of each acreage soil. This is due to a round error because we only show the acres of each soil with two decimal.





Boundary