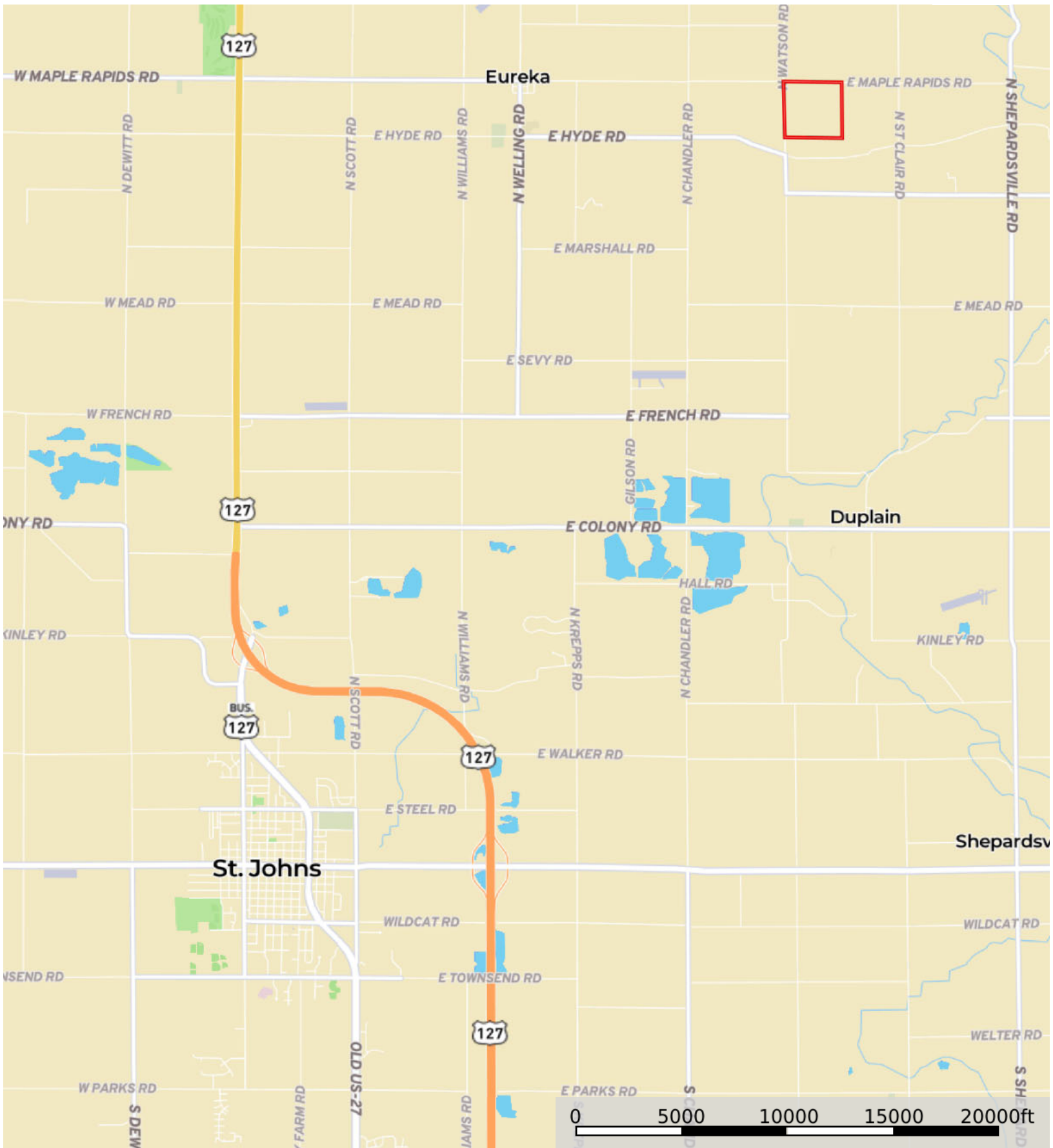



L-2300409

Clinton County, Michigan, 166 AC +/-




 Boundary

L-2300409

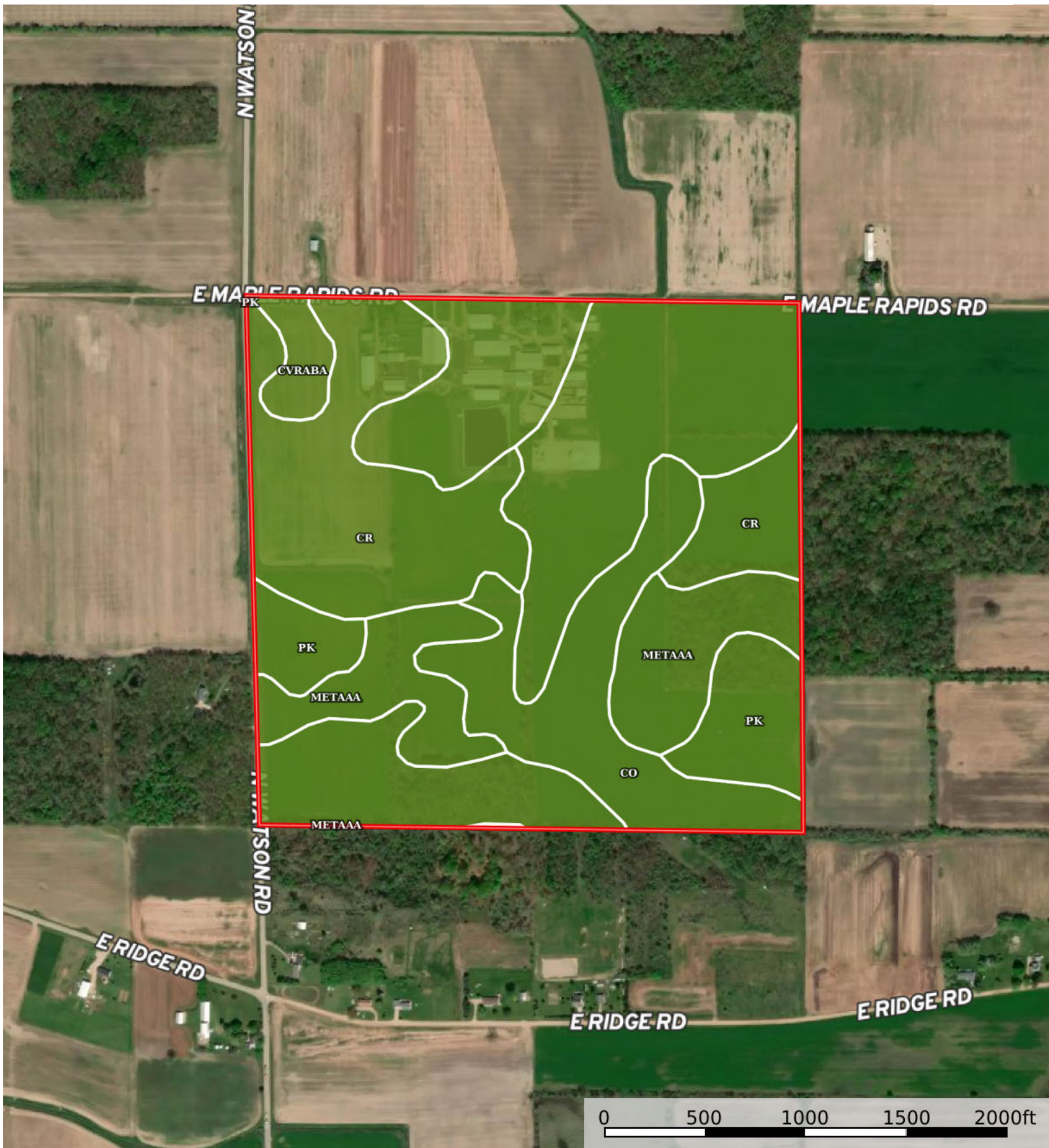
Clinton County, Michigan, 166 AC +/-




 Boundary

L-2300409

Clinton County, Michigan, 166 AC +/-



 Boundary

Boundary 165.65 ac

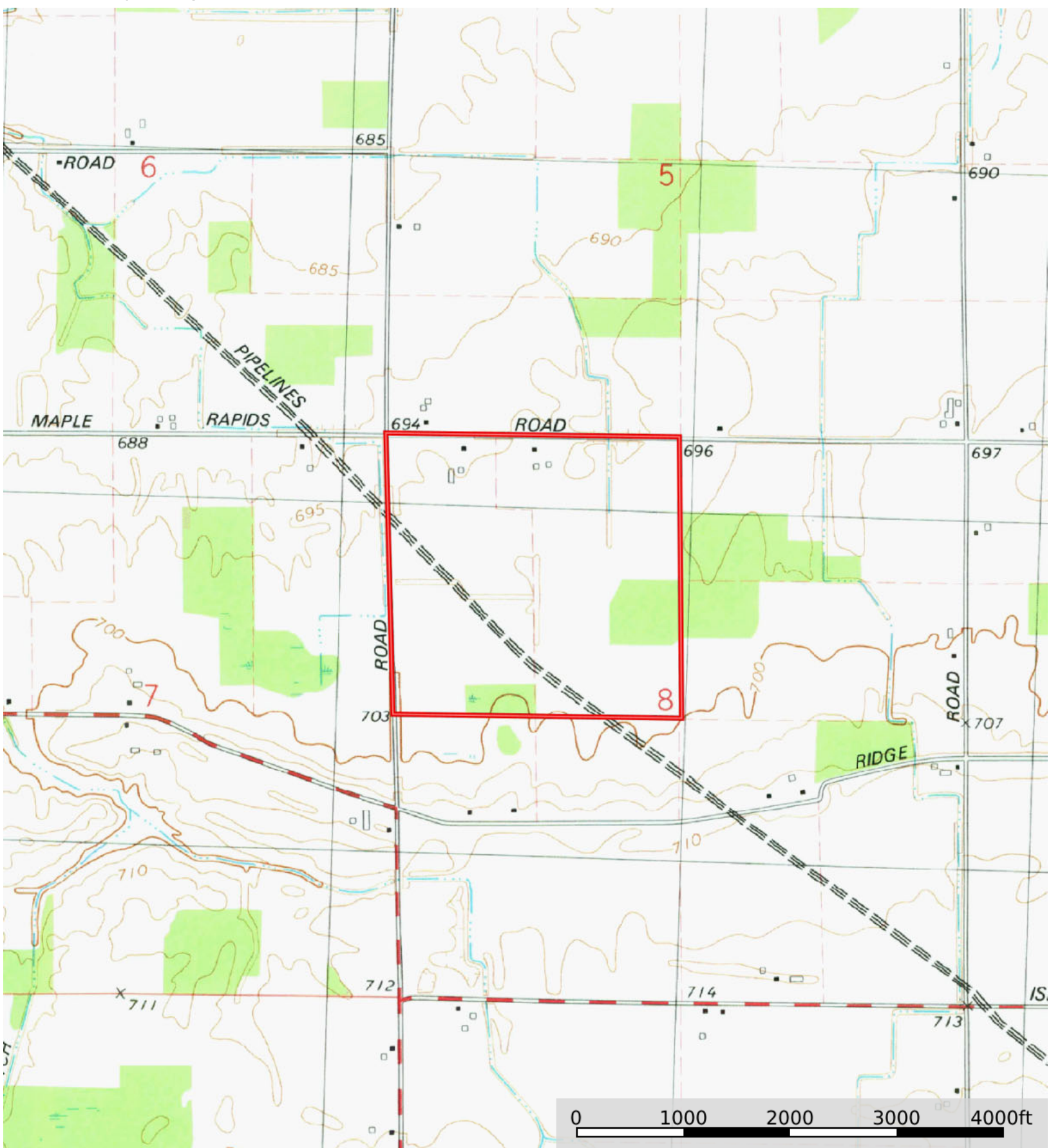
SOIL CODE	SOIL DESCRIPTION	ACRES	%	CPI	NCCPI	CAP
Pk	Parkhill loam, 0 to 1 percent slopes	61.86	37.34	0	62	2w
Cr	Corunna sandy loam	39.07	23.58	0	61	2w
Co	Colwood loam	23.3	14.06	0	74	2w
MetaaA	Metamora-Conover complex, 0 to 3 percent slopes	22.65	13.67	0	48	2w
CvrabA	Conover loam, 0 to 3 percent slopes	18.77	11.33	0	53	2w
TOTALS		165.6 5(*)	100%	-	60.51	2.0


(*) Total acres may differ in the second decimal compared to the sum of each acreage soil. This is due to a round error because we only show the acres of each soil with two decimal.



L-2300409

Clinton County, Michigan, 166 AC +/-



 Boundary