

L-2300412



SCAN THE QR CODE
FOR MORE INFO!



HOME FOR SALE

220 East 8th Street | Platte, South Dakota

OFFERED AT
\$79,000

Highlights:

- Large corner lots with mature trees
- Established area of town
- Priced right for the fixer upper



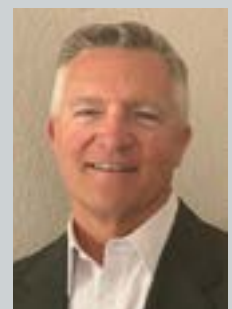
www.FarmersNational.com

For additional information, please contact:

Brent Veurink, Agent

BVeurink@FarmersNational.com

Office: (605) 337-2260 • Cell: (605) 830-2414



Property Information

Directions to Property: Take Highway 44 to Ohio Street. Go one block south.

Property Description: Lots of potential for this one and one-half story home built in 1920. Updated heating system, and located close to the heart of town. Enjoy a large yard that is partially fenced in with plenty of storage on the property.

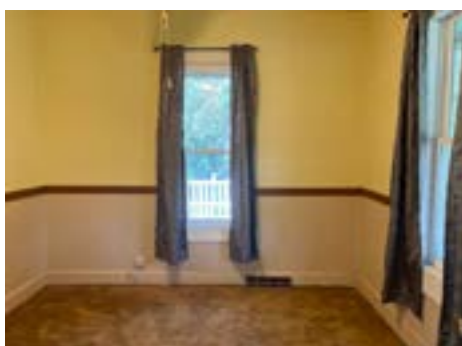
Community Features: Welcome to an area of great recreation. Enjoy hunting, fishing, and golfing. Excellent school system and medical facilities. Annual car show.

2022 Taxes: \$583.00

Price: \$79,000

Estimated Room Sizes

Living Room	Main Floor	12'0 x 23'0
Kitchen	Main Floor	11'0 x 15'0
Bedroom	Main Floor	10'0 x 11'0
Bedroom	Main Floor	8'0 x 12'0
Full Bathroom	Main Floor	6'0 x 12'0
Utility Room	Main Floor	11'0 x 12'0
Sun Porch	Main Floor	8'0 x 24'0
Bedroom	Upstairs	16'0 x 24'0



Information provided was obtained from sources deemed reliable, but the broker makes no guarantees as to its accuracy. All prospective buyers are urged to inspect the property, its title and to rely on their own conclusions. Seller reserves the right to refuse any or all offers submitted and may withdraw the property from offering without notice. Farmers National Company and its representatives on the reverse side are the Designated Agents for the seller.