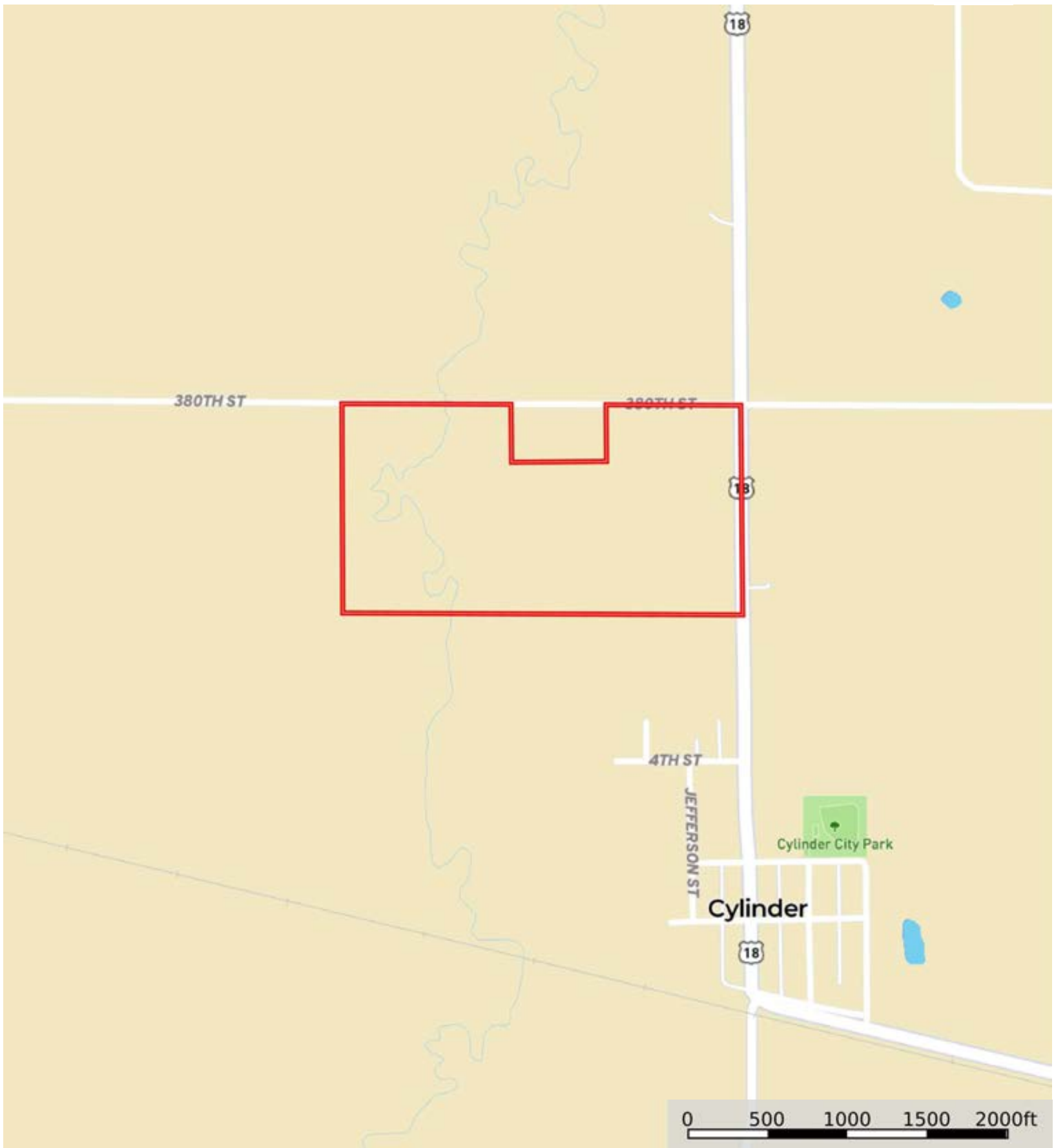



L-2300443

Palo Alto County, Iowa, 70 AC +/-



 Boundary



 Boundary

L-2300443

Palo Alto County, Iowa, 70 AC +/-

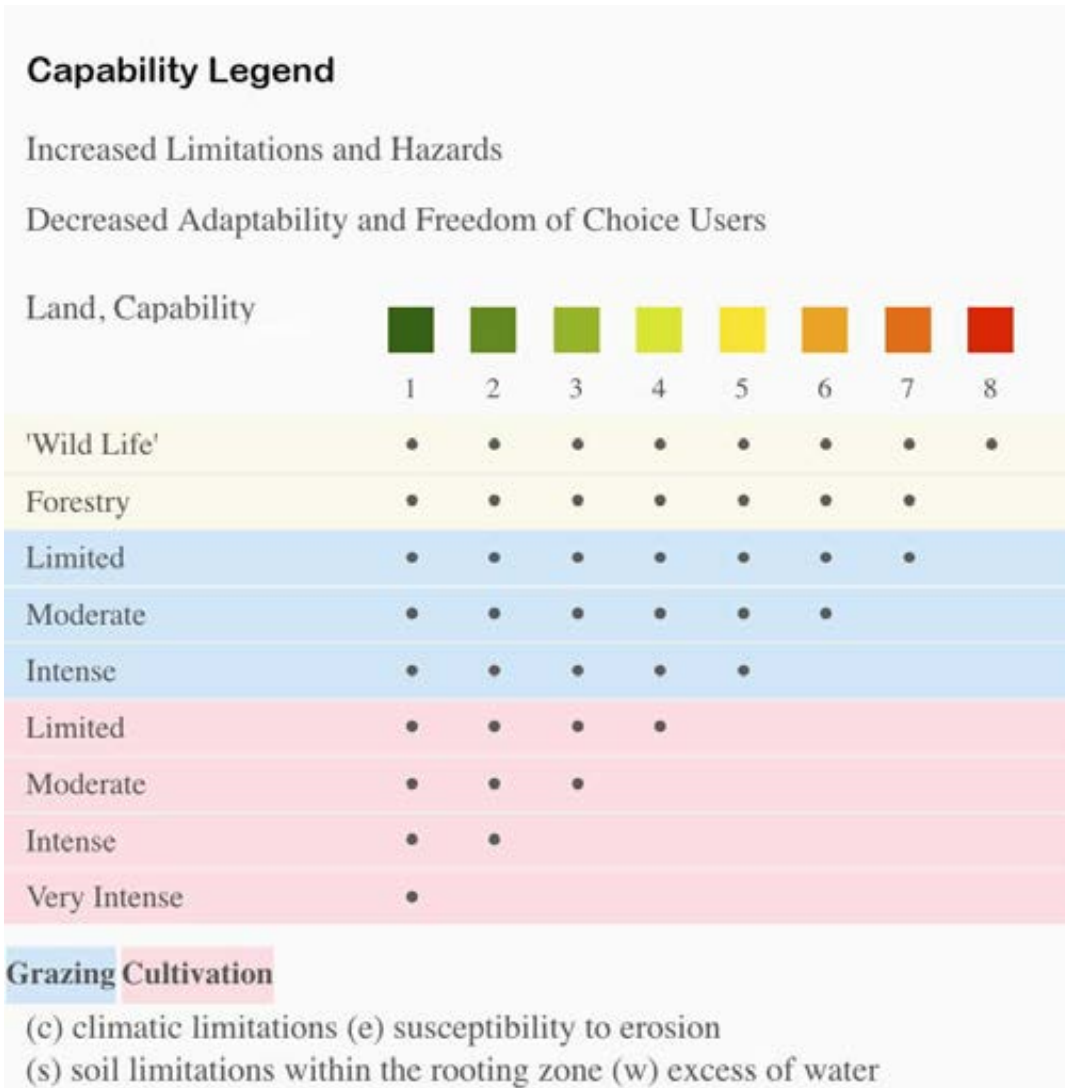


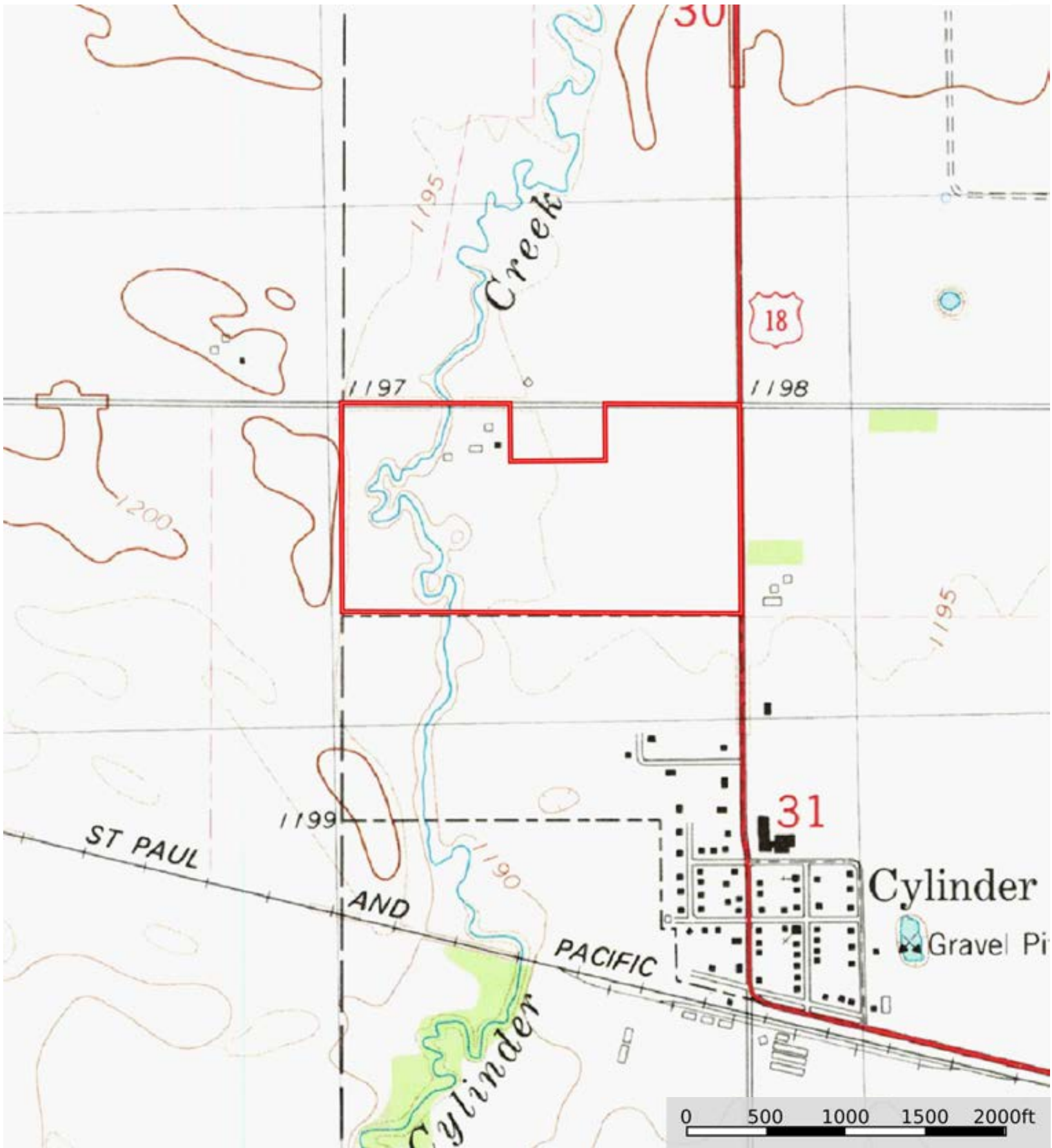
 Boundary

|  Boundary 70.67 ac

SOIL CODE	SOIL DESCRIPTION	ACRES	%	CSR2	CPI	NCCPI	CAP
224	Linder loam, 0 to 2 percent slopes	26.34	37.27	56.0	0	61	2s
133	Colo silty clay loam, 0 to 2 percent slopes	19.93	28.2	74.0	0	82	2w
72	Estherville loam, 0 to 2 percent slopes	16.71	23.65	23.0	0	48	3s
203	Cylinder loam, 0 to 2 percent slopes	2.55	3.61	58.0	0	73	2s
55	Nicollet clay loam, 1 to 3 percent slopes	2.45	3.47	89.0	0	81	1
107	Webster clay loam, 0 to 2 percent slopes	1.44	2.04	86.0	0	83	2w
138B	Clarion loam, 2 to 6 percent slopes	0.93	1.32	89.0	0	83	2e
6	Okoboji silty clay loam, 0 to 1 percent slopes	0.32	0.45	59.0	0	75	3w
TOTALS		70.67(*)	100%	55.55	-	65.78	2.21

(*) Total acres may differ in the second decimal compared to the sum of each acreage soil. This is due to a round error because we only show the acres of each soil with two decimal.





 Boundary