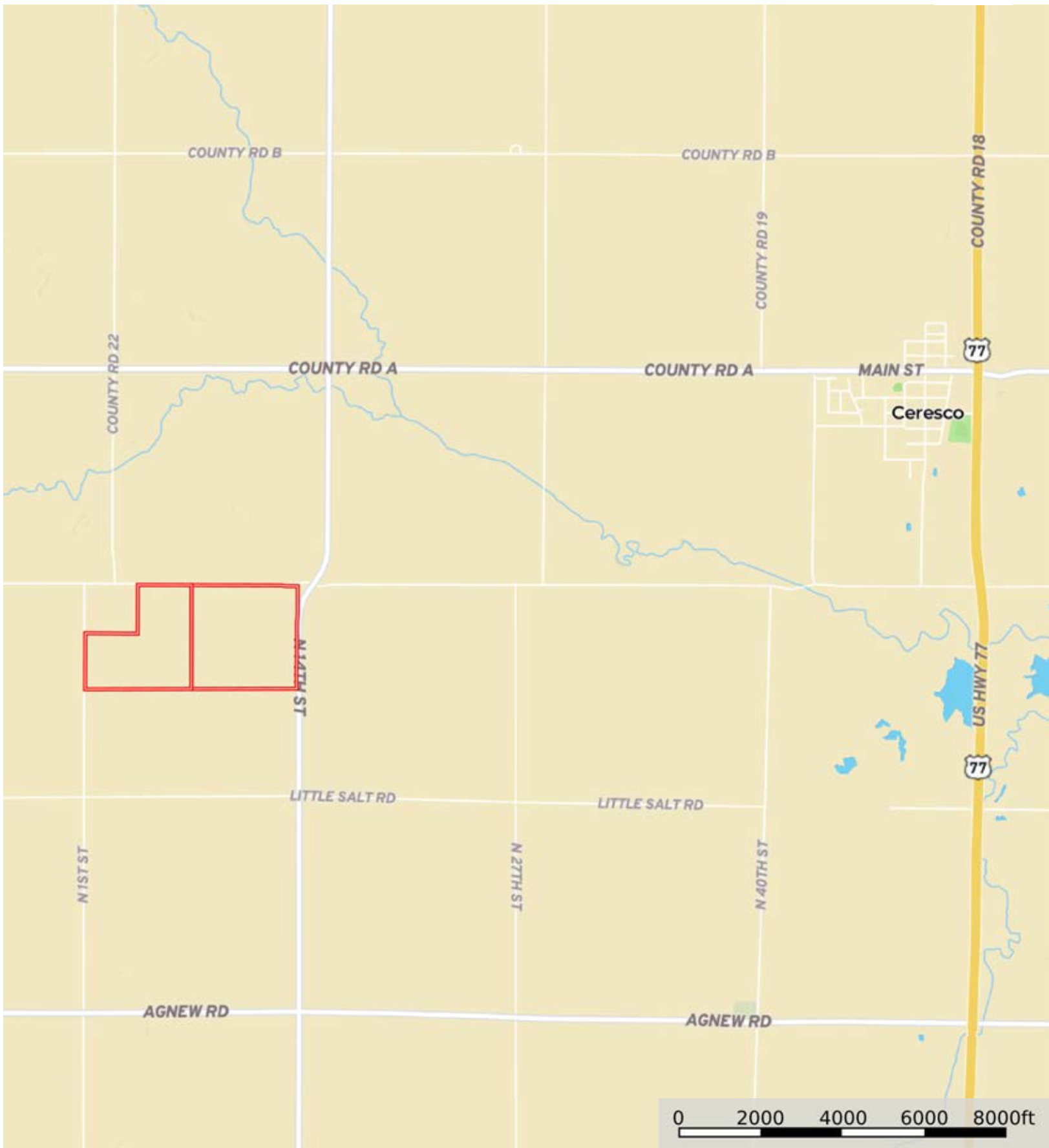



L-2300448

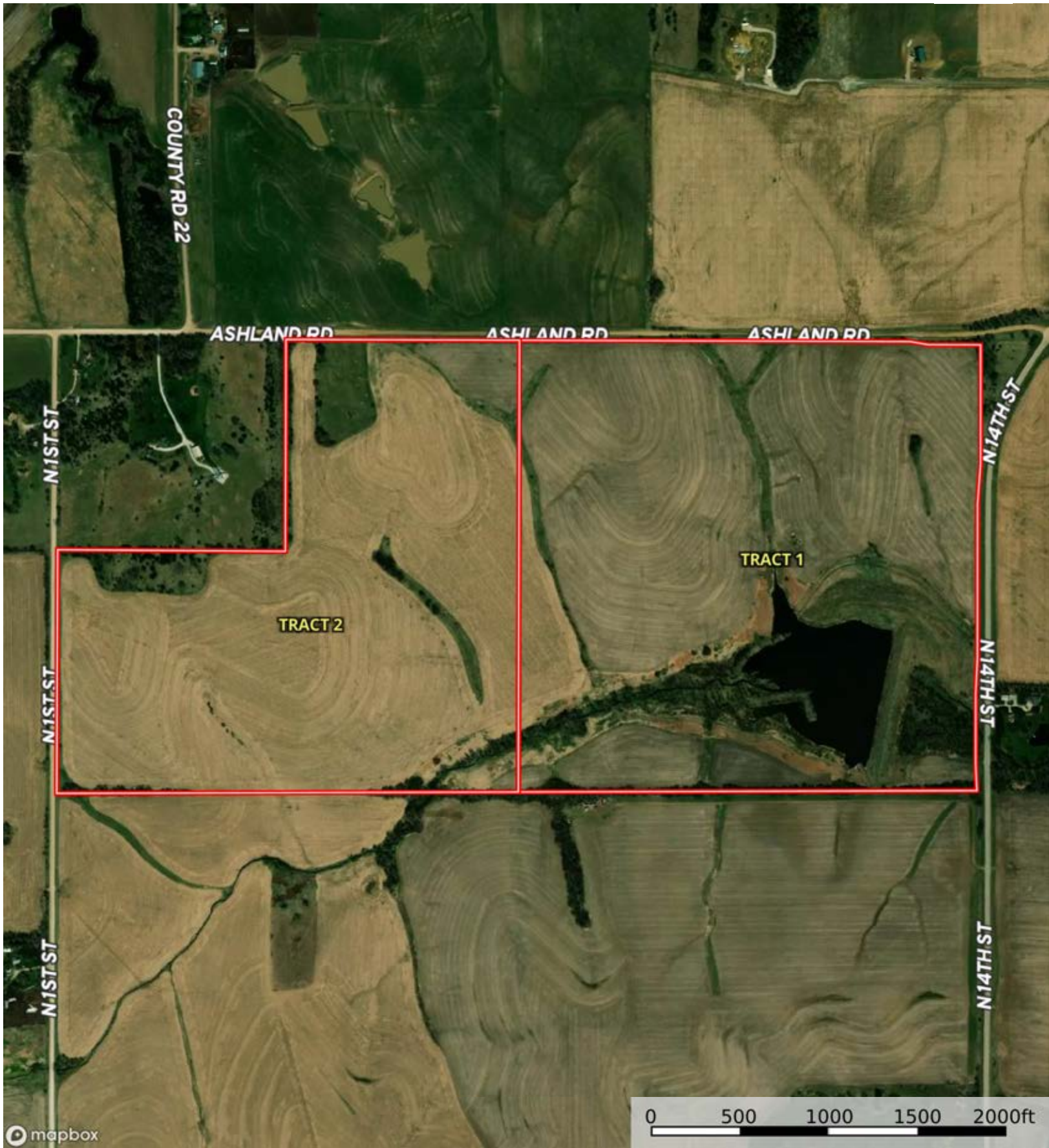
Lancaster County, Nebraska, 269 AC +/-



 Boundary

L-2300448

Lancaster County, Nebraska, 269 AC +/-



Boundary

L-2300448

Lancaster County, Nebraska, 269 AC +/-



Boundary

|  Boundary 151.39 ac

SOIL CODE	SOIL DESCRIPTION	ACRES	%	CPI	NCCPI	CAP
7207	Aksarben silty clay loam, 6 to 11 percent slopes	34.43	22.75	0	65	3e
7644	Yutan silty clay loam, 6 to 11 percent slopes, eroded	23.88	15.78	0	59	3e
7647	Yutan, eroded-Aksarben silty clay loams, 2 to 6 percent slopes	21.15	13.97	0	60	2e
7750	Nodaway silt loam, occasionally flooded	19.17	12.66	0	93	2w
7231	Judson silt loam, 2 to 6 percent slopes	18.43	12.18	0	78	2e
7646	Yutan, eroded-Judson complex, 6 to 11 percent slopes	18.43	12.18	0	66	3e
7050	Kennebec silt loam, occasionally flooded	6.54	4.32	0	94	2w
7211	Burchard-Nodaway complex, 2 to 30 percent slopes	6.38	4.21	0	50	6e
7206	Aksarben silty clay loam, 2 to 6 percent slopes	2.17	1.43	0	66	2e
7353	Malmo clay loam, 6 to 11 percent slopes, eroded	0.43	0.28	0	40	4e
7351	Malmo clay, 2 to 6 percent slopes, eroded	0.38	0.25	0	40	4e
TOTALS		151.39(*)	100%	-	69.12	2.69









(*) Total acres may differ in the second decimal compared to the sum of each acreage soil. This is due to a round error because we only show the acres of each soil with two decimal.

Capability Legend

Increased Limitations and Hazards

Decreased Adaptability and Freedom of Choice Users

Land, Capability

								
	1	2	3	4	5	6	7	8
'Wild Life'	•	•	•	•	•	•	•	•
Forestry	•	•	•	•	•	•	•	
Limited	•	•	•	•	•	•	•	
Moderate	•	•	•	•	•	•		
Intense	•	•	•	•	•			
Limited	•	•	•	•				
Moderate	•	•	•					
Intense	•	•						
Very Intense	•							

Grazing Cultivation

(c) climatic limitations (e) susceptibility to erosion

(s) soil limitations within the rooting zone (w) excess of water



Boundary



|  Boundary 117.96 ac

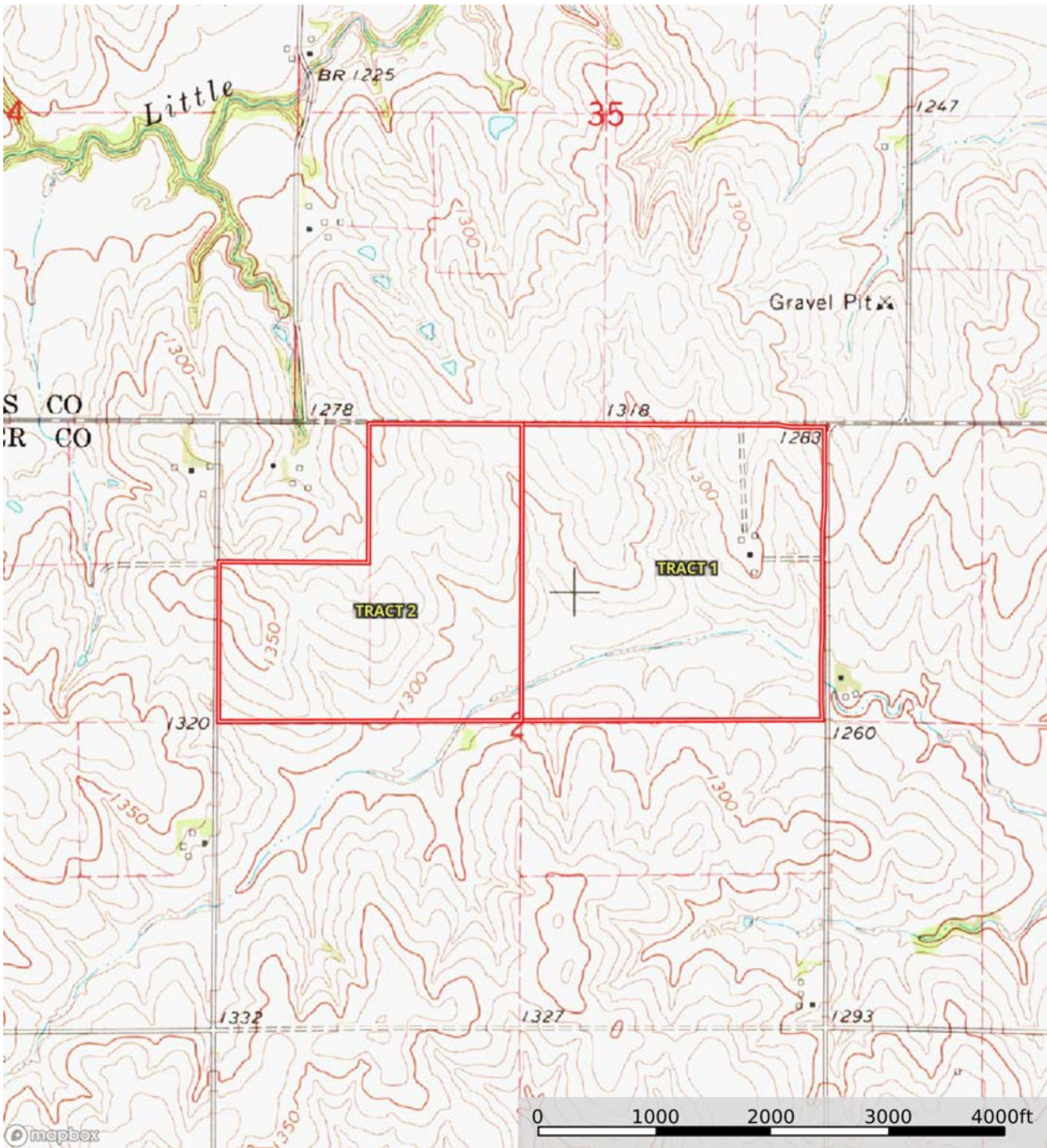
SOIL CODE	SOIL DESCRIPTION	ACRES	%	CPI	NCCPI	CAP
7644	Yutan silty clay loam, 6 to 11 percent slopes, eroded	49.07	41.6	0	59	3e
7647	Yutan, eroded-Aksarben silty clay loams, 2 to 6 percent slopes	27.47	23.29	0	60	2e
7207	Aksarben silty clay loam, 6 to 11 percent slopes	13.02	11.04	0	65	3e
3840	Geary silty clay loam, 7 to 11 percent slopes, eroded	7.25	6.15	0	73	4e
7231	Judson silt loam, 2 to 6 percent slopes	6.65	5.64	0	78	2e
7418	Morrill clay loam, 6 to 11 percent slopes	5.22	4.42	0	66	3e
7297	Malcolm silt loam, 6 to 11 percent slopes, eroded	4.87	4.13	0	77	4e
7750	Nodaway silt loam, occasionally flooded	4.41	3.74	0	93	2w
TOTALS		117.96(*)	100%	-	64.15	2.78

(*) Total acres may differ in the second decimal compared to the sum of each acreage soil. This is due to a round error because we only show the acres of each soil with two decimal.



L-2300448

Lancaster County, Nebraska, 269 AC +/-



Boundary