

L-2300449

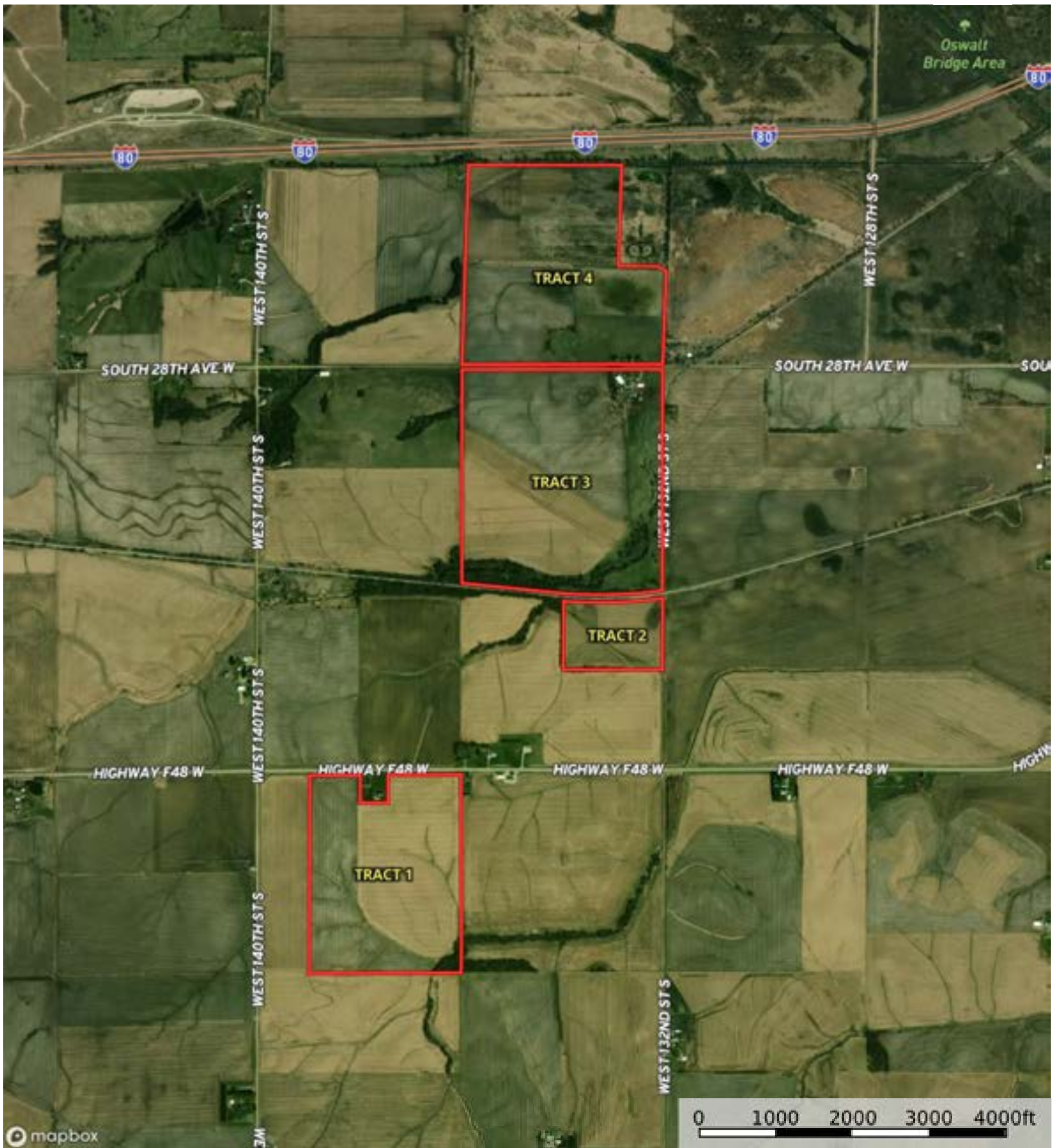
Jasper County, Iowa, 450 AC +/-



Boundary

L-2300449

Jasper County, Iowa, 450 AC +/-



mapbox

Boundary

L-2300449

Jasper County, Iowa, 450 AC +/-



Boundary

L-2300449

Jasper County, Iowa, 450 AC +/-



Boundary

Boundary 114.78 ac

SOIL CODE	SOIL DESCRIPTION	ACRES	%	CSR2	CPI	NCCPI	CAP
120C2	Tama silty clay loam, 5 to 9 percent slopes, eroded	46.6	40.6	87.0	0	89	3e
120D2	Tama silty clay loam, 9 to 14 percent slopes, eroded	25.78	22.46	62.0	0	86	3e
120B	Tama silty clay loam, 2 to 5 percent slopes	22.2	19.34	95.0	0	97	2e
5B	Ackmore-Colo complex, 2 to 5 percent slopes	8.02	6.99	77.0	0	88	2w
430	Ackmore silt loam, 0 to 2 percent slopes, occasionally flooded	5.28	4.6	70.0	0	91	2w
8B	Judson silty clay loam, 2 to 5 percent slopes	4.77	4.16	93.0	0	96	2e
428B	Ely silty clay loam, 2 to 5 percent slopes	1.96	1.71	88.0	0	91	2e
93D2	Shelby-Adair complex, 9 to 14 percent slopes, moderately eroded	0.17	0.15	35.0	0	72	3e
TOTALS		114.78(*)	100%	81.65	-	90.2	2.63

(\*) Total acres may differ in the second decimal compared to the sum of each acreage soil. This is due to a round error because we only show the acres of each soil with two decimal.



L-2300449

Jasper County, Iowa, 450 AC +/-



mapbox

Boundary

L-2300449

Jasper County, Iowa, 450 AC +/-



Boundary

|  Boundary 26.49 ac

SOIL CODE	SOIL DESCRIPTION	ACRES	%	CSR2	CPI	NCCPI	CAP
5B	Ackmore-Colo complex, 2 to 5 percent slopes	12.88	48.6	77.0	0	88	2w
L138B	Clarion loam, Bemis moraine, 2 to 6 percent slopes	6.94	26.19	88.0	0	80	2e
L107	Webster clay loam, Bemis moraine, 0 to 2 percent slopes	4.37	16.49	88.0	0	84	2w
120D2	Tama silty clay loam, 9 to 14 percent slopes, eroded	2.2	8.3	62.0	0	86	3e
430	Ackmore silt loam, 0 to 2 percent slopes, occasionally flooded	0.1	0.38	70.0	0	91	2w
TOTALS		26.49(*)	100%	80.39	-	85.06	2.08

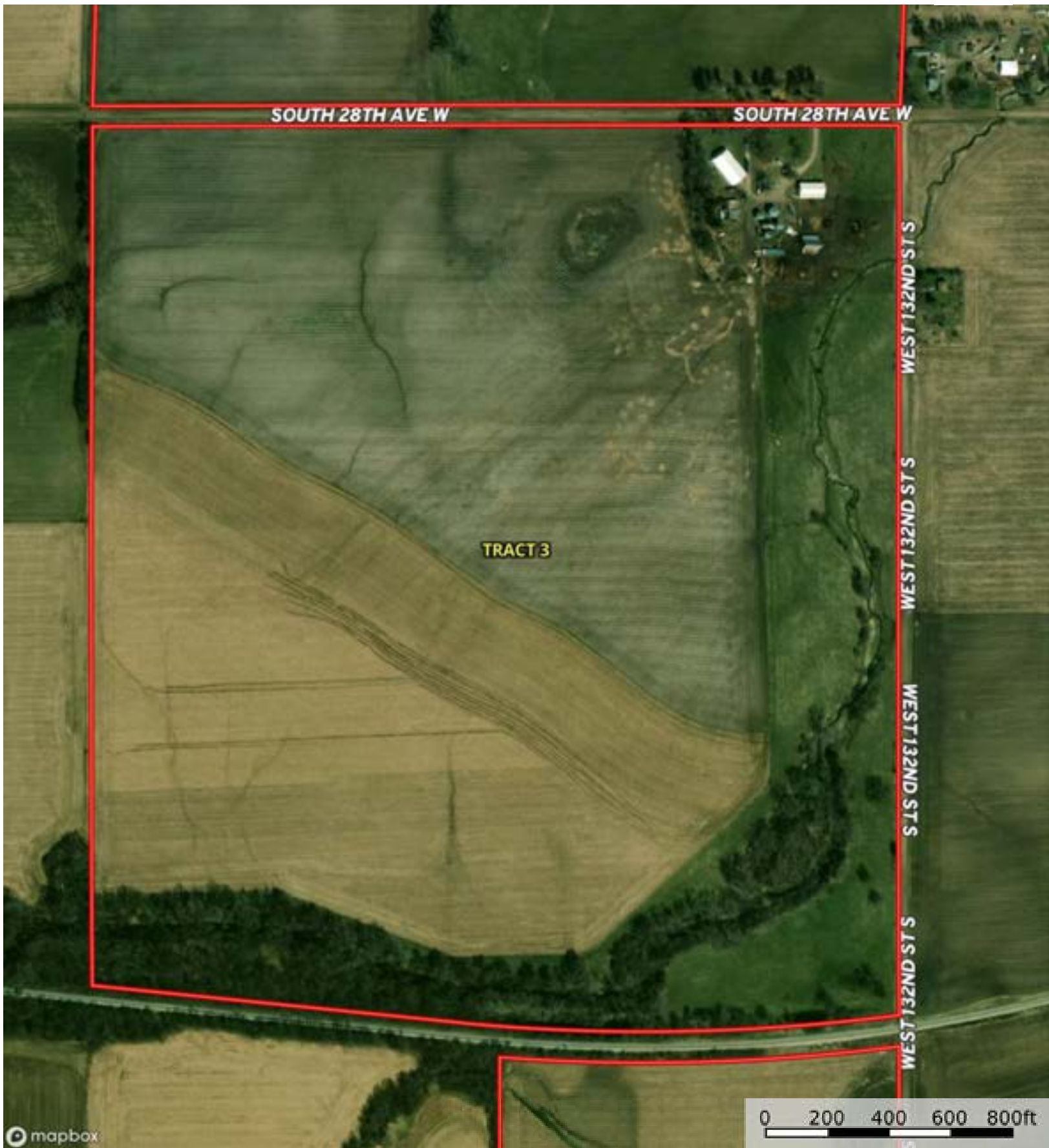
(\*) Total acres may differ in the second decimal compared to the sum of each acreage soil. This is due to a round error because we only show the acres of each soil with two decimal.





L-2300449

Jasper County, Iowa, 450 AC +/-



mapbox

0 200 400 600 800ft

Boundary

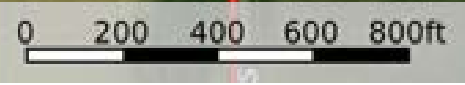
id. The information contained herein was obtained from sources deemed to be reliable. Land id™ Services makes no warranties or guarantees as to the completeness or accuracy thereof.

L-2300449

Jasper County, Iowa, 450 AC +/-



Boundary



id. The information contained herein was obtained from sources deemed to be reliable. Land id™ Services makes no warranties or guarantees as to the completeness or accuracy thereof.

|  Boundary 174.0 ac

SOIL CODE	SOIL DESCRIPTION	ACRES	%	CSR2	CPI	NCCPI	CAP
L138B	Clarion loam, Bemis moraine, 2 to 6 percent slopes	60.65	34.85	88.0	0	80	2e
L138C2	Clarion loam, Bemis moraine, 6 to 10 percent slopes, moderately eroded	26.95	15.49	83.0	0	64	3e
L55	Nicollet loam, 1 to 3 percent slopes	24.71	14.2	91.0	0	85	1
5B	Ackmore-Colo complex, 2 to 5 percent slopes	13.67	7.86	77.0	0	88	2w
L107	Webster clay loam, Bemis moraine, 0 to 2 percent slopes	10.99	6.32	88.0	0	84	2w
430	Ackmore silt loam, 0 to 2 percent slopes, occasionally flooded	10.4	5.98	70.0	0	91	2w
138E2	Clarion loam, 14 to 18 percent slopes, moderately eroded	9.38	5.39	44.0	0	68	4e
27B	Terril loam, 2 to 6 percent slopes	8.55	4.91	87.0	0	91	2e
138D2	Clarion loam, 9 to 14 percent slopes, moderately eroded	6.22	3.57	56.0	0	72	3e
L62D2	Storden loam, Bemis moraine, 10 to 16 percent slopes, moderately eroded	2.48	1.43	41.0	0	63	4e
TOTALS		174.0(*)	100%	81.47	-	79.13	2.18

(\*) Total acres may differ in the second decimal compared to the sum of each acreage soil. This is due to a round error because we only show the acres of each soil with two decimal.

## Capability Legend

Increased Limitations and Hazards

Decreased Adaptability and Freedom of Choice Users

Land, Capability

								
	1	2	3	4	5	6	7	8
'Wild Life'	•	•	•	•	•	•	•	•
Forestry	•	•	•	•	•	•	•	
Limited	•	•	•	•	•	•	•	
Moderate	•	•	•	•	•	•		
Intense	•	•	•	•	•			
Limited	•	•	•	•				
Moderate	•	•	•					
Intense	•	•						
Very Intense	•							

### Grazing Cultivation


(c) climatic limitations (e) susceptibility to erosion

(s) soil limitations within the rooting zone (w) excess of water

L-2300449

Jasper County, Iowa, 450 AC +/-



 Boundary

L-2300449

Jasper County, Iowa, 450 AC +/-



Boundary

|  Boundary 137.68 ac

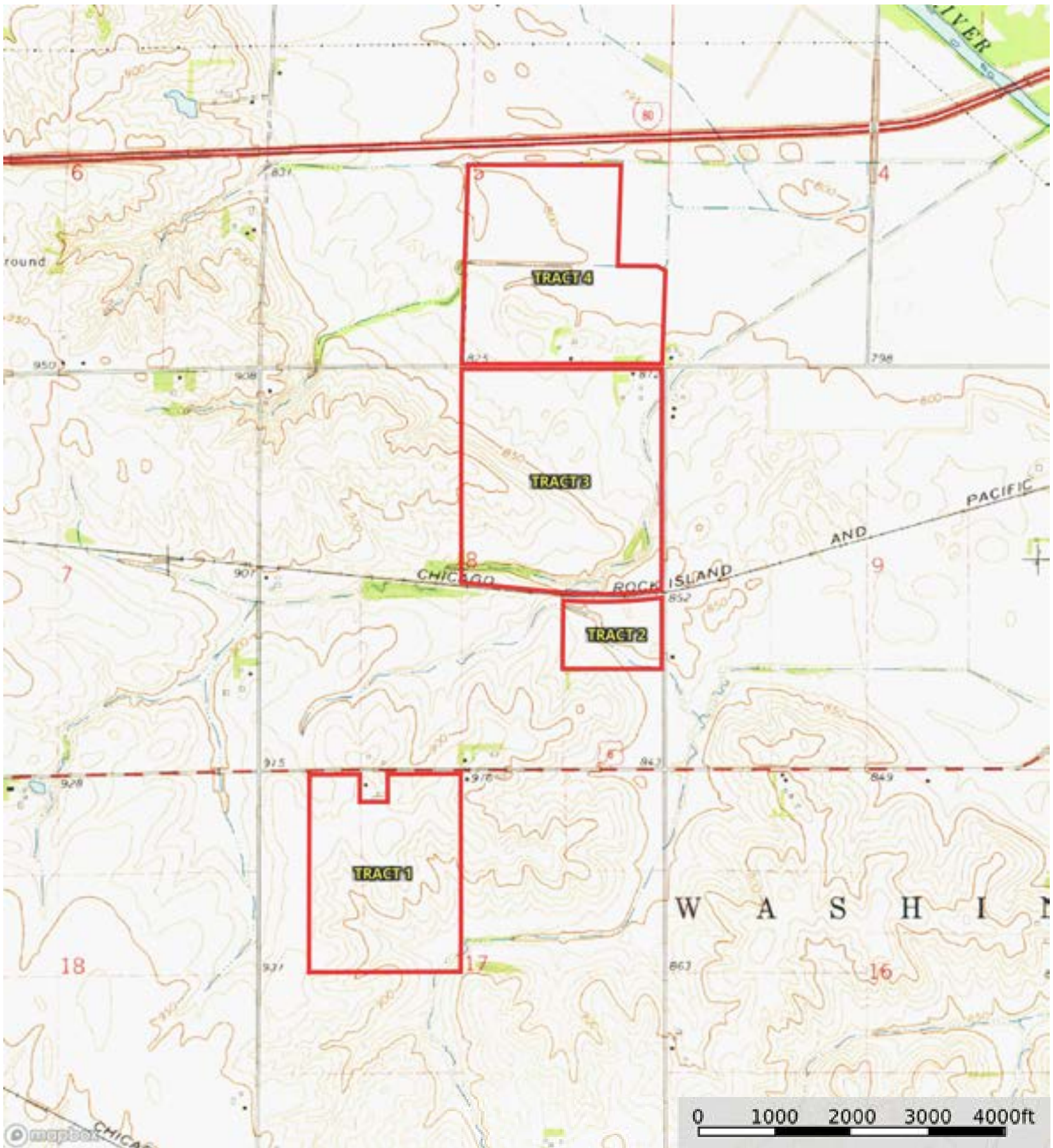
SOIL CODE	SOIL DESCRIPTION	ACRES	%	CSR2	CPI	NCCPI	CAP
430	Ackmore silt loam, 0 to 2 percent slopes, occasionally flooded	42.11	30.59	70.0	0	91	2w
135	Coland clay loam, 0 to 2 percent slopes, occasionally flooded	36.88	26.79	76.0	0	82	2w
L62D2	Storden loam, Bemis moraine, 10 to 16 percent slopes, moderately eroded	14.53	10.55	41.0	0	63	4e
L138B	Clarion loam, Bemis moraine, 2 to 6 percent slopes	13.6	9.88	88.0	0	80	2e
172	Wabash silty clay, 0 to 2 percent slopes	12.48	9.06	38.0	0	48	3w
L107	Webster clay loam, Bemis moraine, 0 to 2 percent slopes	6.77	4.92	88.0	0	84	2w
L55	Nicollet loam, 1 to 3 percent slopes	5.96	4.33	91.0	0	85	1
54	Zook silty clay loam, 0 to 2 percent slopes, occasionally flooded	5.35	3.89	60.0	0	63	2w
TOTALS		137.68(*)	100%	68.83	-	78.96	2.26

(\*) Total acres may differ in the second decimal compared to the sum of each acreage soil. This is due to a round error because we only show the acres of each soil with two decimal.



L-2300449

Jasper County, Iowa, 450 AC +/-



Boundary



The information contained herein was obtained from sources deemed to be reliable. Land ID™ Services makes no warranties or guarantees as to the completeness or accuracy thereof.