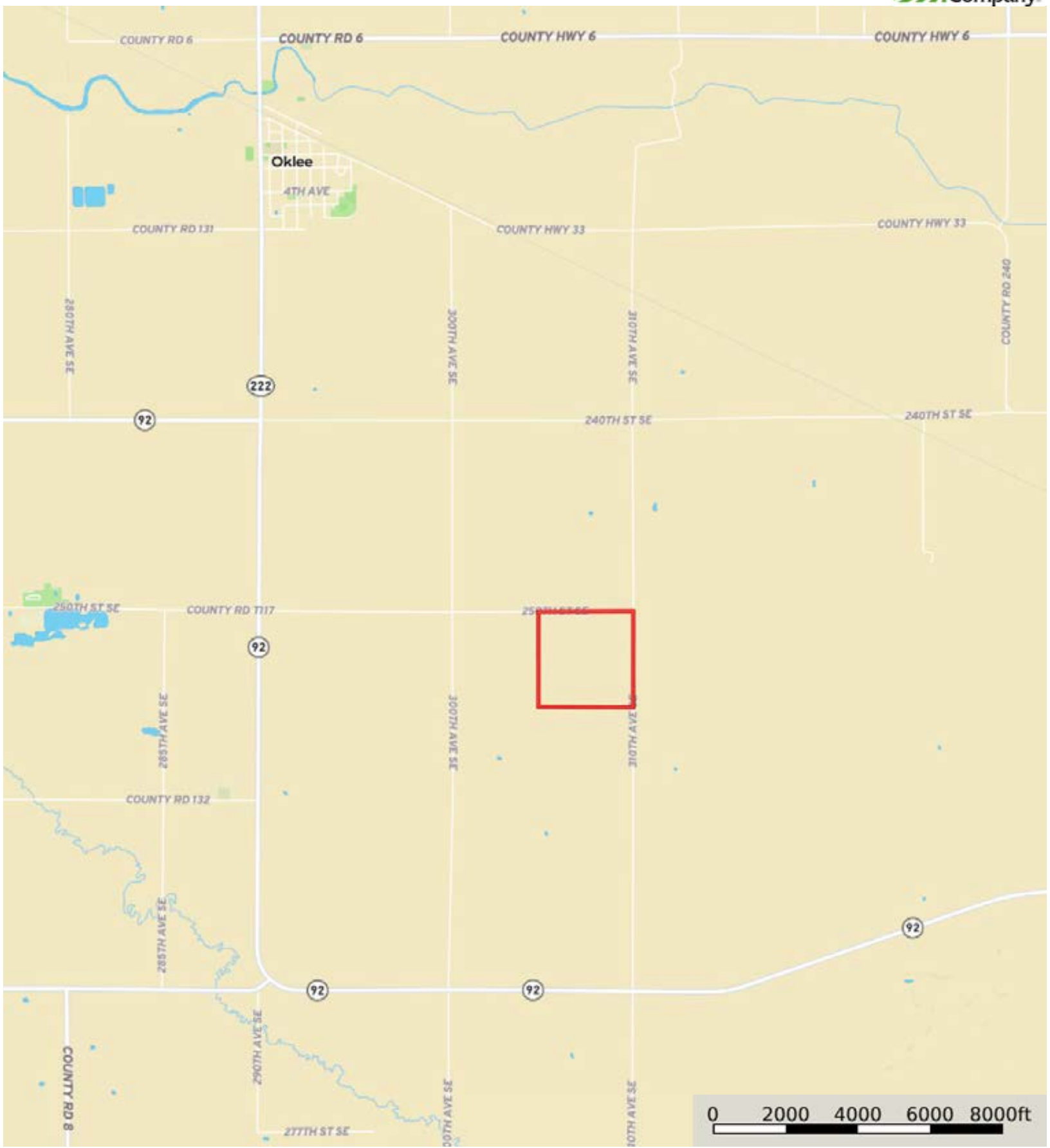


L-2300467

Polk County, Minnesota, 160 AC +/-




Boundary

L-2300467

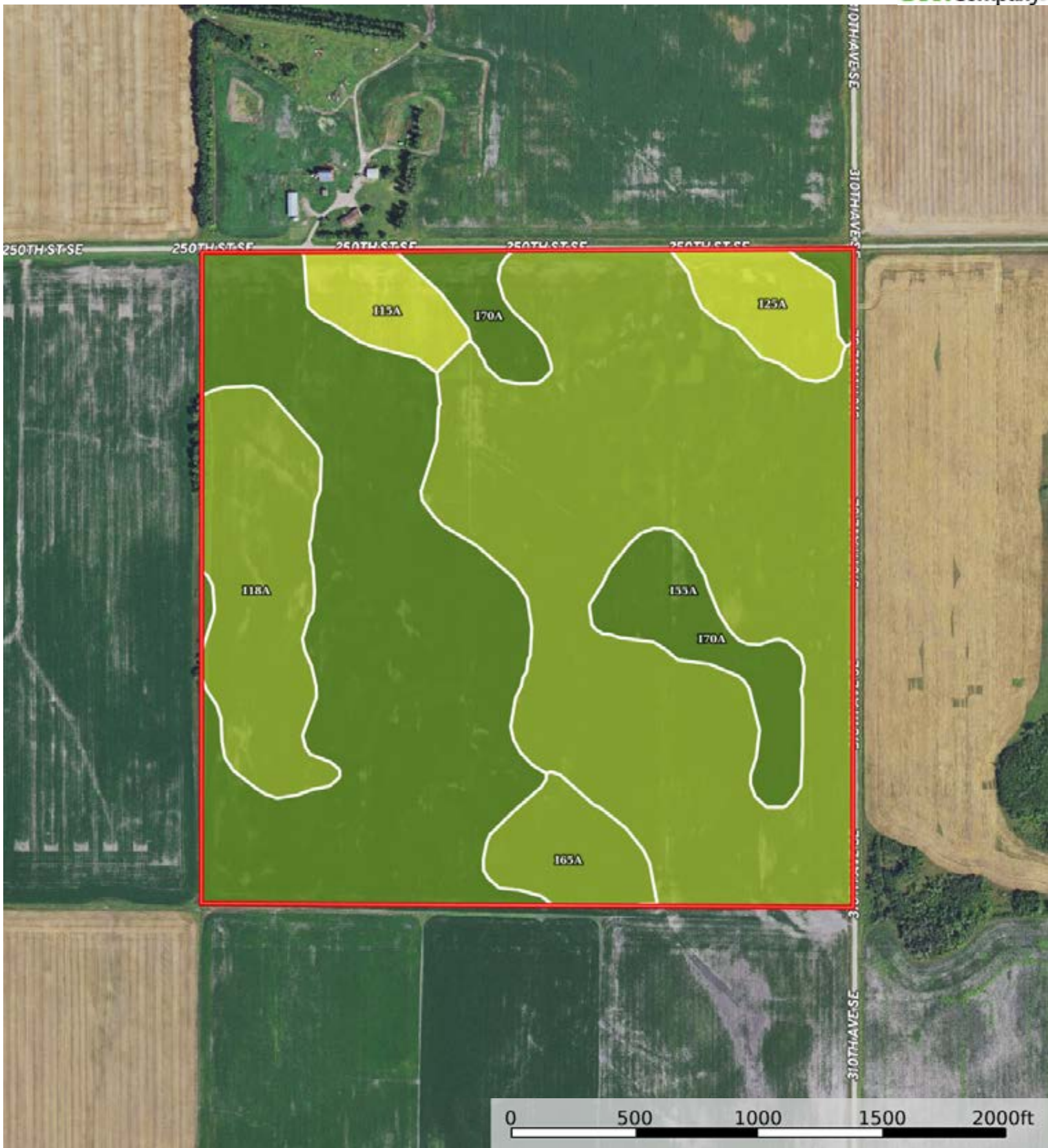
Polk County, Minnesota, 160 AC +/-




 Boundary

L-2300467

Polk County, Minnesota, 160 AC +/-



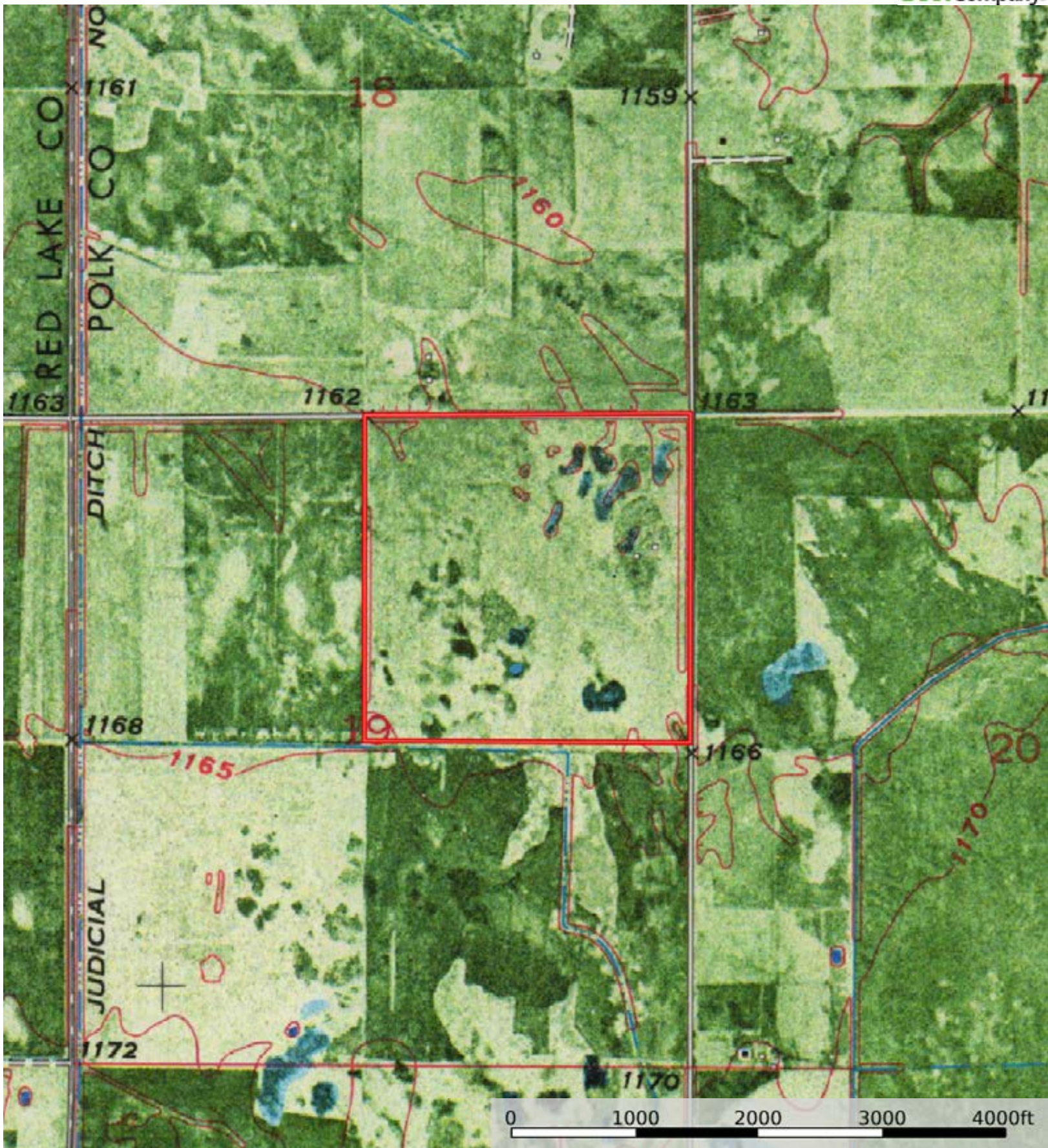
 Boundary


Boundary 160.81 ac

| SOIL CODE | SOIL DESCRIPTION | ACRES | % | CPI | NCCPI | CAP |
|-----------|---|---------------|-------|-------|-------|------|
| I55A | Rosewood fine sandy loam, Aspen Parkland, 0 to 1 percent slopes | 68.76 | 42.75 | 54 | 34 | 3w |
| I70A | Strathcona fine sandy loam, 0 to 1 percent slopes | 60.76 | 37.78 | 80 | 43 | 2w |
| I18A | Foldahl loamy fine sand, loamy till substratum, 0 to 3 percent slopes | 15.47 | 9.62 | 65 | 45 | 3s |
| I65A | Ulen loamy fine sand, 0 to 2 percent slopes | 5.69 | 3.54 | 55 | 27 | 3s |
| I25A | Hamar loamy fine sand, Aspen Parkland, 0 to 1 percent slopes | 5.36 | 3.33 | 52 | 30 | 4w |
| I15A | Hecla loamy fine sand, 0 to 2 percent slopes | 4.77 | 2.97 | 50 | 32 | 4e |
| TOTALS | | 160.8 1(*) | 100% | 64.72 | 38.01 | 2.69 |

(*) Total acres may differ in the second decimal compared to the sum of each acreage soil. This is due to a round error because we only show the acres of each soil with two decimal.





 Boundary