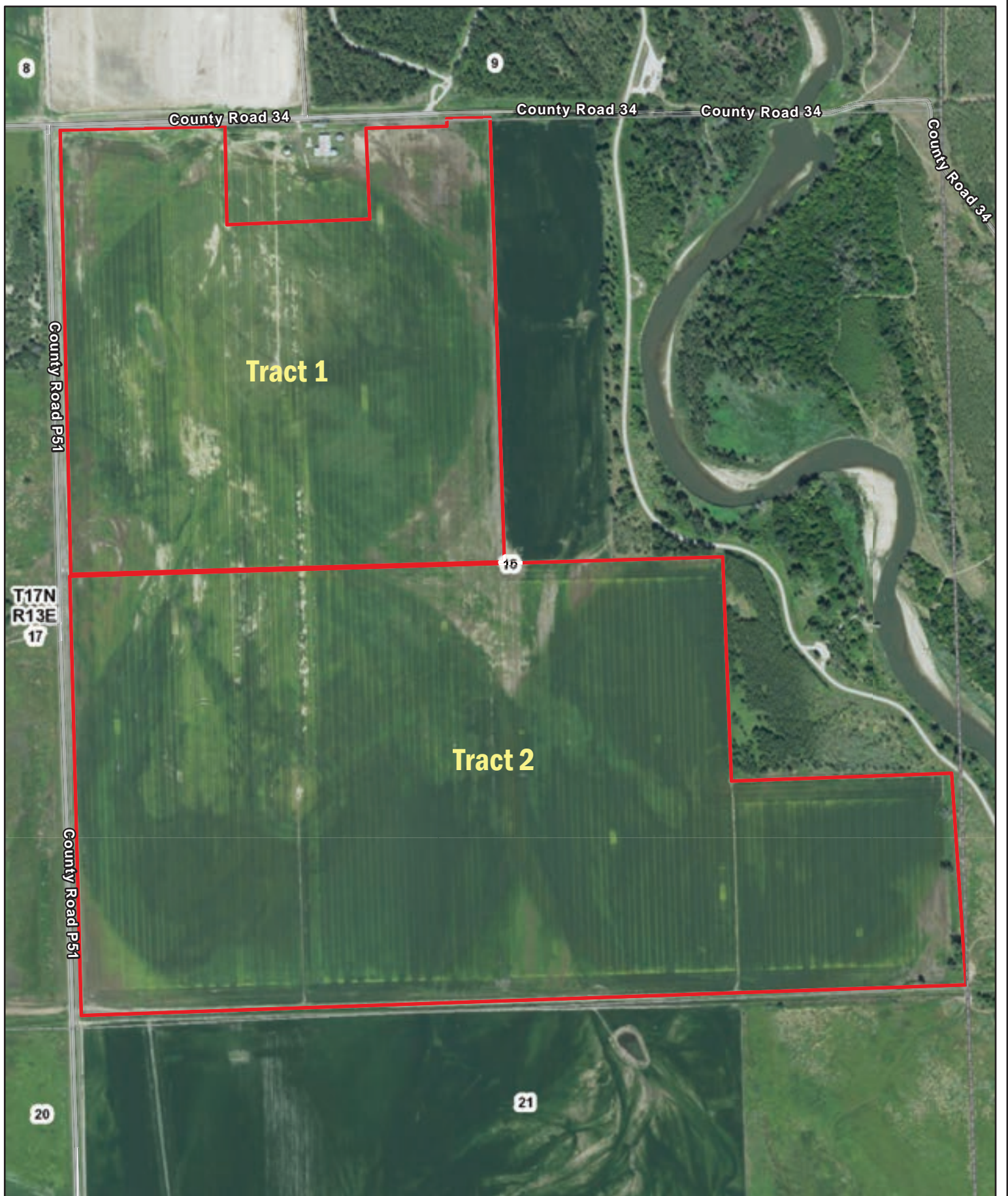


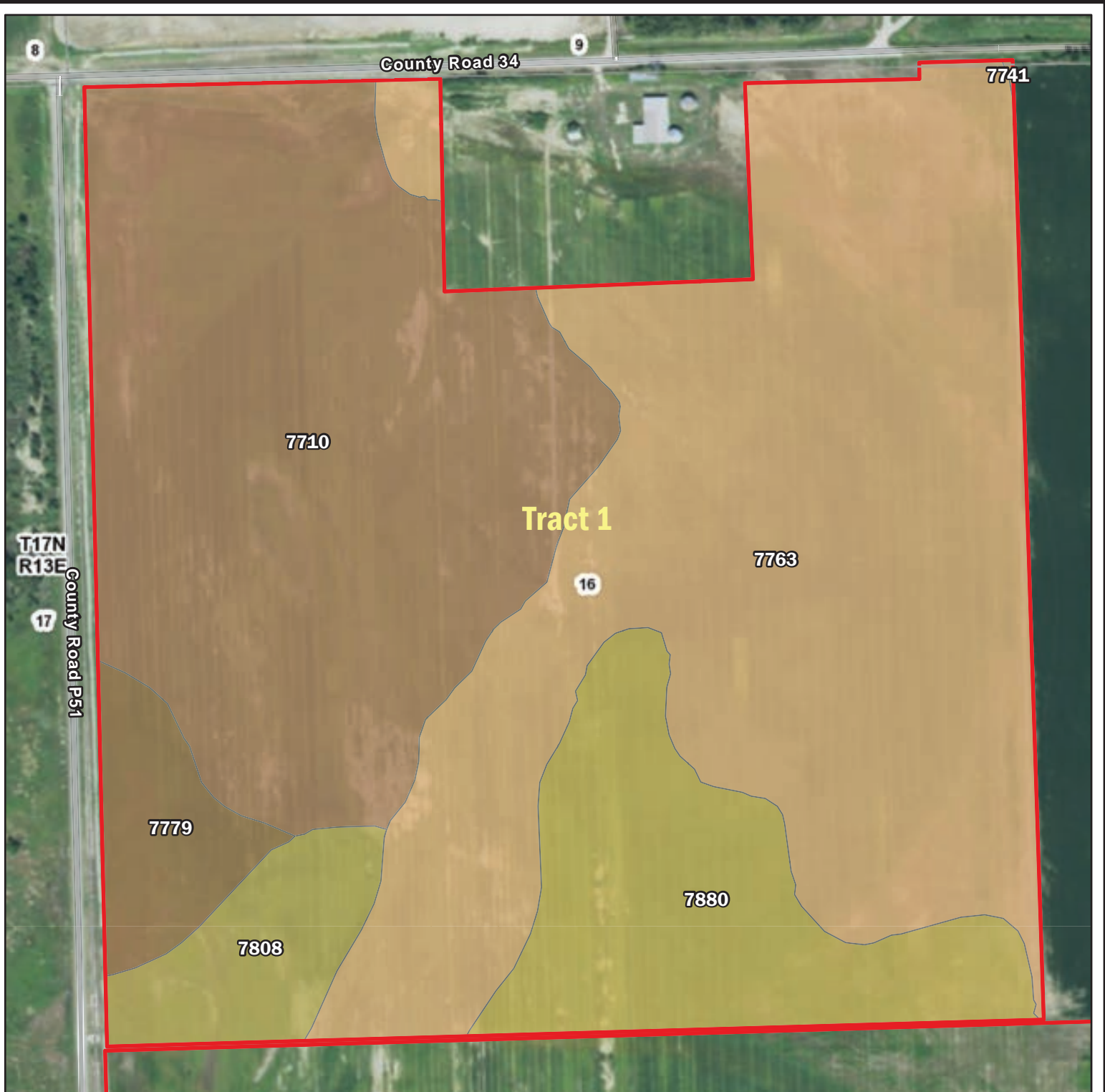
L-2300472
Washington County, Nebraska

Latitude: 41.427°N
Longitude: 95.9726°W
Imagery Source: USDA NAIP
Soil Data Source: USDA NRCS
Boundaries are Approximate



L-2300472
Washington County, Nebraska

Latitude: 41.4431°N
Longitude: 95.9546°W
Imagery Source: USDA NAIP
Soil Data Source: USDA NRCS
Boundaries are Approximate

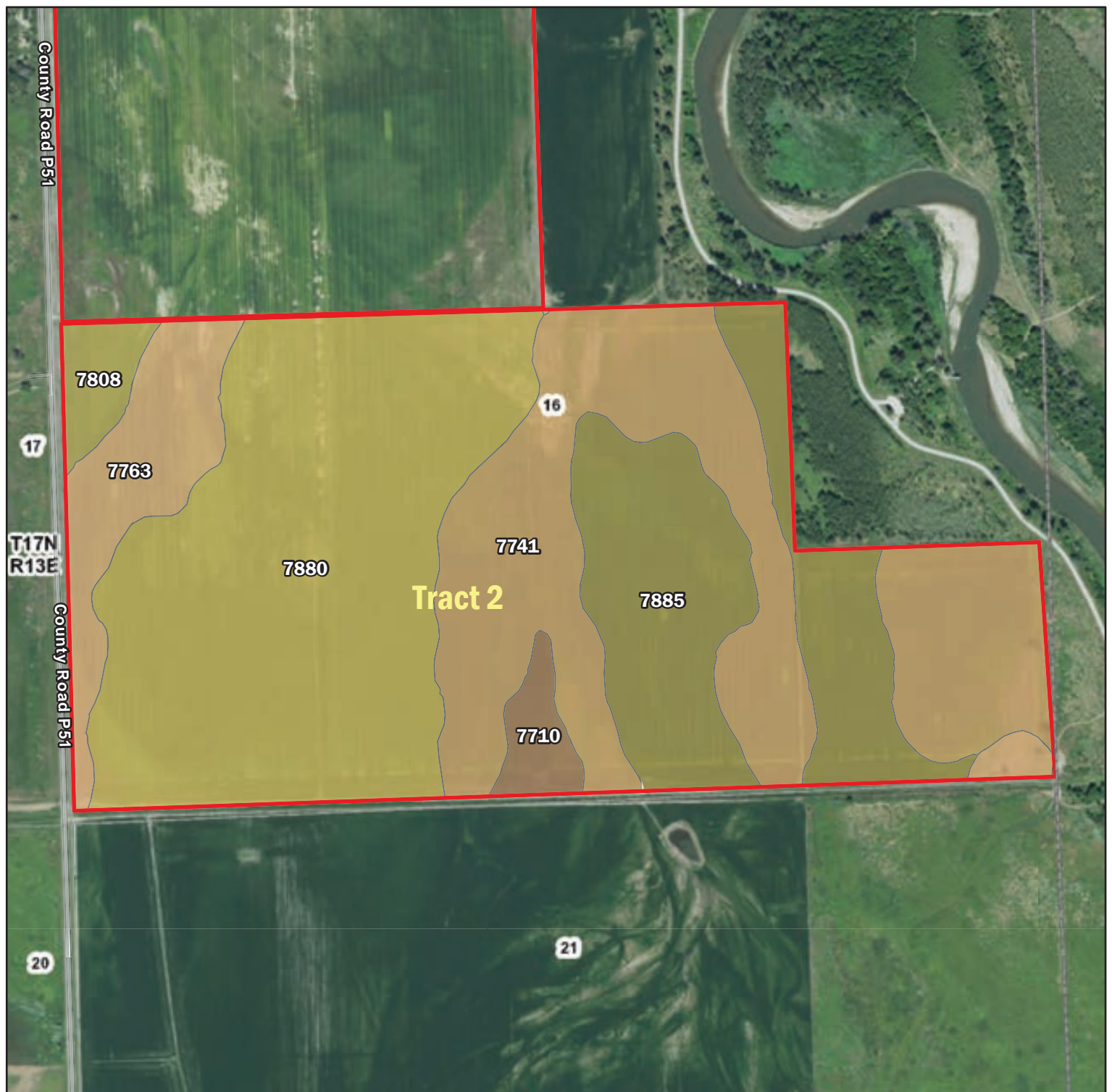


Map Symbol	Name	Non-IRR LCC	IRR LCC	ACRES
7763	Onawa silty clay loam, occasionally flooded	2w	2w	64.6
7710	Albaton silty clay, 0 to 2 percent slopes, occasionally flooded	3w	3w	48.6
7880	Onawa silty clay, occasionally flooded	2w	2w	17.8
7808	Salix silty clay loam, rarely flooded	1	1	6.3
7779	Cooper silty clay loam, rarely flooded	2w	2w	5.4
7741	Haynie silt loam, 0 to 2 percent slopes, occasionally flooded	2w	2w	0
TOTAL				142.7



L-2300472
Washington County, Nebraska

Latitude: 41.4474°N
Longitude: 95.9593°W
Imagery Source: USDA NAIP
Soil Data Source: USDA NRCS
Boundaries are Approximate

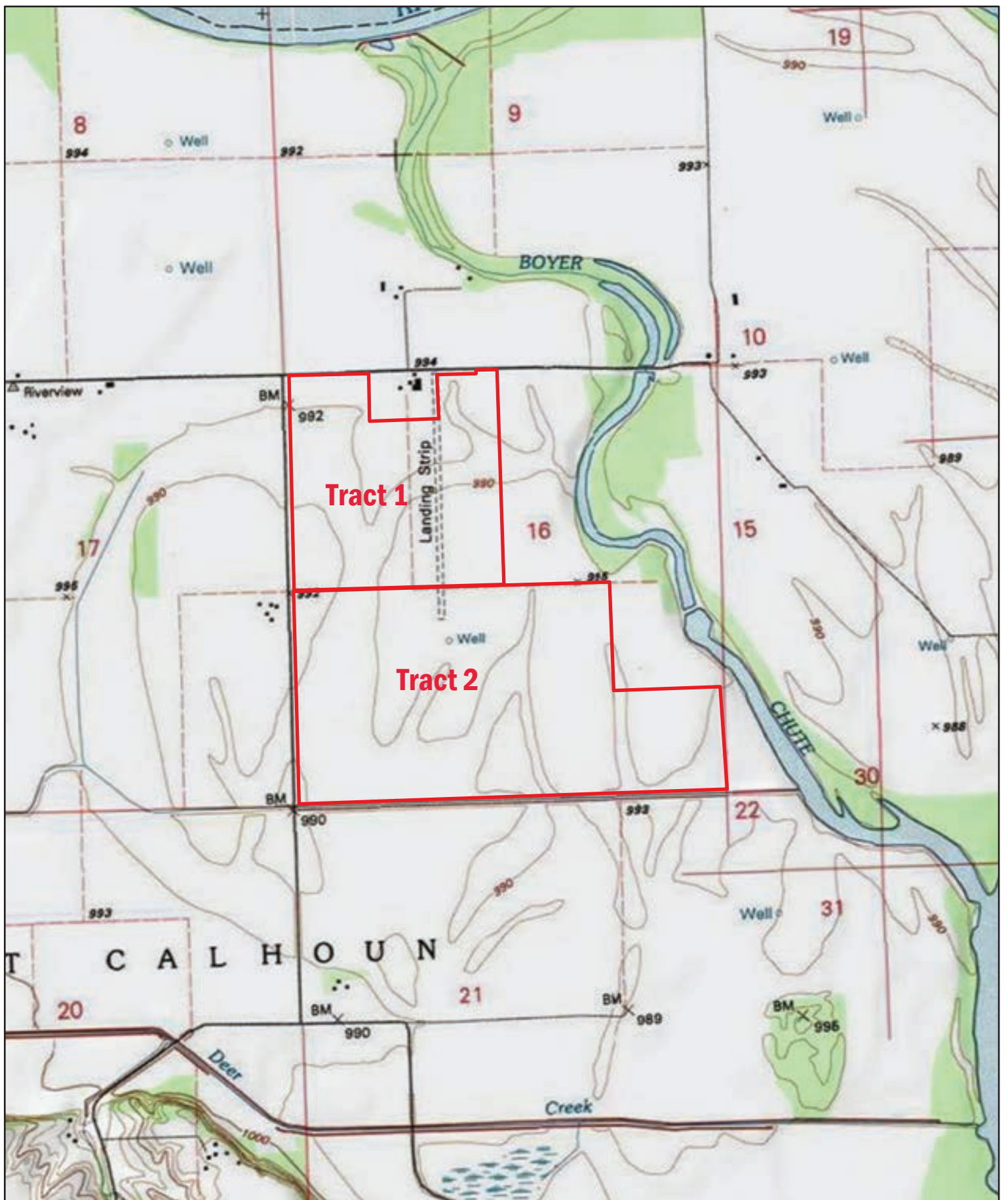


Map Symbol	Name	Non-IRR LCC	IRR LCC	ACRES
7880	Onawa silty clay, occasionally flooded	2w	2w	102.2
7741	Haynie silt loam, 0 to 2 percent slopes, occasionally flooded	2w	2w	81.7
7885	Onawa-Haynie complex, occasionally flooded	2w	2w	52.4
7763	Onawa silty clay loam, occasionally flooded	2w	2w	21.6
7808	Salix silty clay loam, rarely flooded	1	1	5.9
7710	Albaton silty clay, 0 to 2 percent slopes, occasionally flooded	3w	3w	5.4
TOTAL				269.2



L-2300472
Washington County, Nebraska

Latitude: 41.4402°N
Longitude: 95.9544°W
Imagery Source: USDA NAIP
Soil Data Source: USDA NRCS
Boundaries are Approximate



L-2300472
Washington County, Nebraska

Latitude: 41.4431°N
Longitude: 95.9546°W
Imagery Source: USDA NAIP
Soil Data Source: USDA NRCS
Boundaries are Approximate