


L-2300488

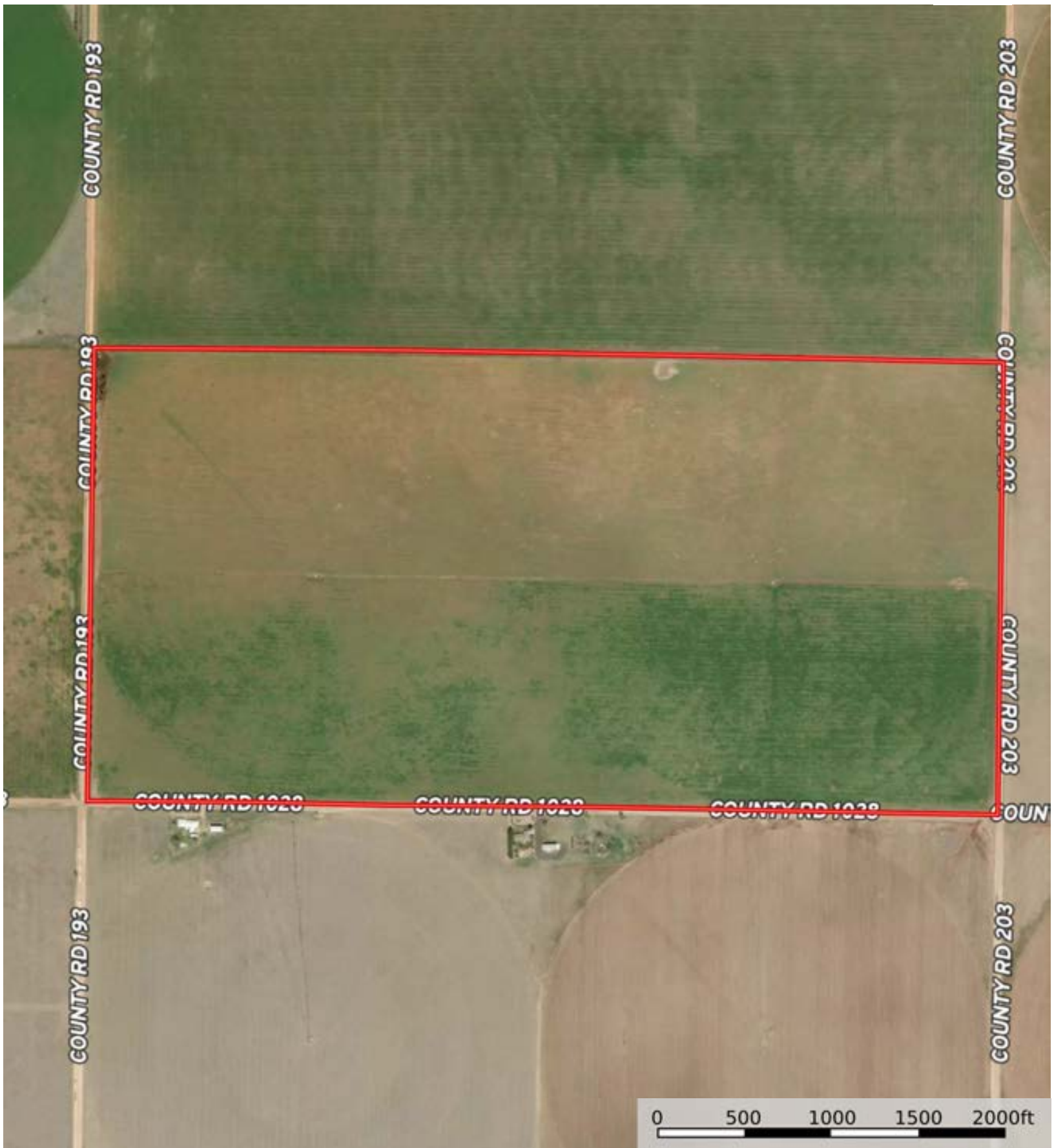
Bailey County, Texas, 320 AC +/-




 Boundary

L-2300488

Bailey County, Texas, 320 AC +/-



 Boundary



The information contained herein was obtained from sources deemed to be reliable. Land id™ Services makes no warranties or guarantees as to the completeness or accuracy thereof.

L-2300488

Bailey County, Texas, 320 AC +/-



 Boundary



The information contained herein was obtained from sources deemed to be reliable. Land id™ Services makes no warranties or guarantees as to the completeness or accuracy thereof.

|  Boundary 314.8 ac

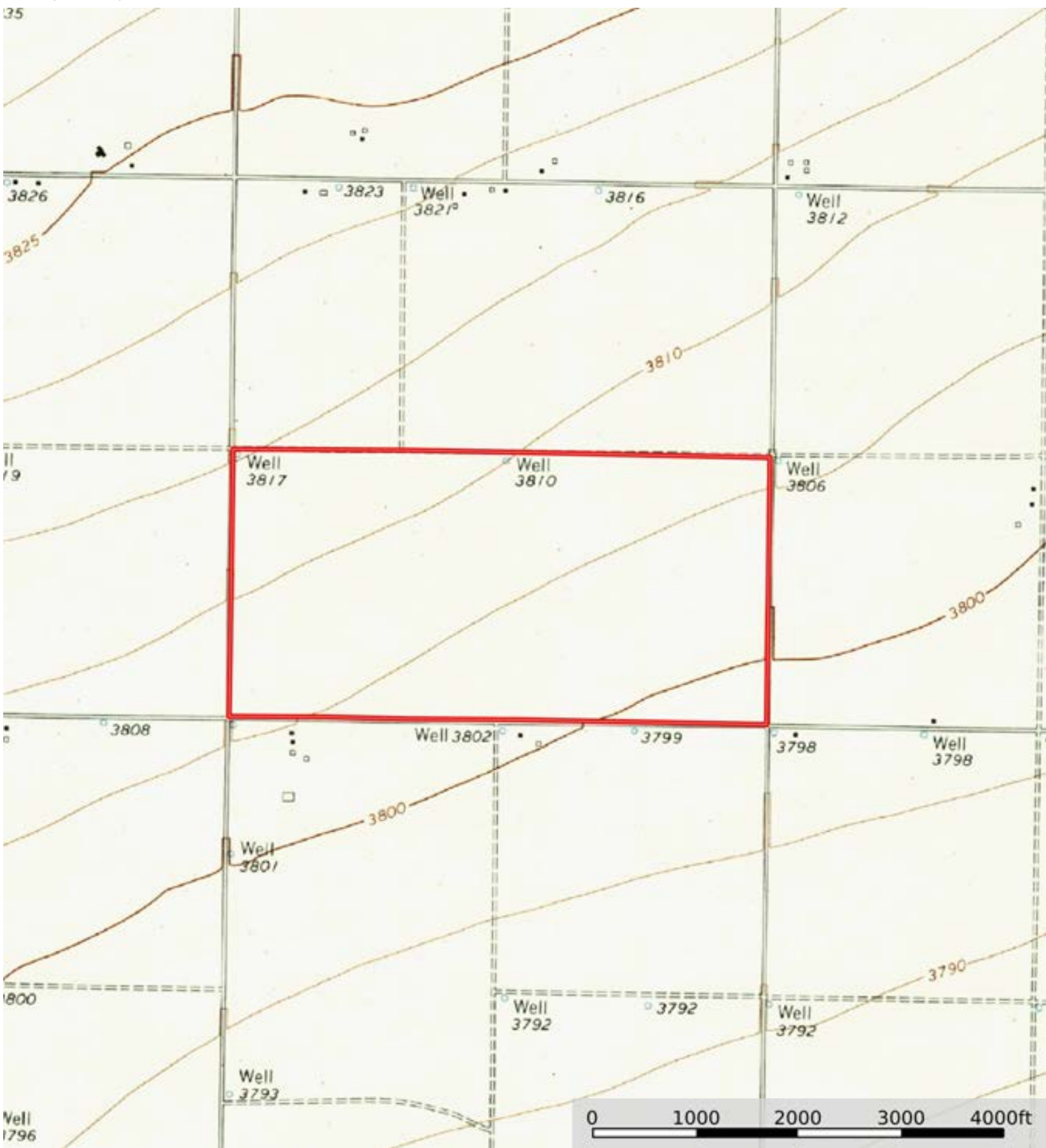
SOIL CODE	SOIL DESCRIPTION	ACRES	%	CPI	NCCPI	CAP
PmA	Portales loam, 0 to 1 percent slopes	128.04	40.67	0	45	3e
PfA	Midessa fine sandy loam, 0 to 1 percent slopes	109.17	34.68	0	40	3e
AfA	Amarillo fine sandy loam, 0 to 1 percent slopes	76.53	24.31	0	46	3e
ZfA	Zita fine sandy loam, 0 to 1 percent slopes	1.06	0.34	0	38	3e
TOTALS		314.8(*)	100%	-	43.48	3.0

(*) Total acres may differ in the second decimal compared to the sum of each acreage soil. This is due to a round error because we only show the acres of each soil with two decimal.



L-2300488

Bailey County, Texas, 320 AC +/-



 Boundary