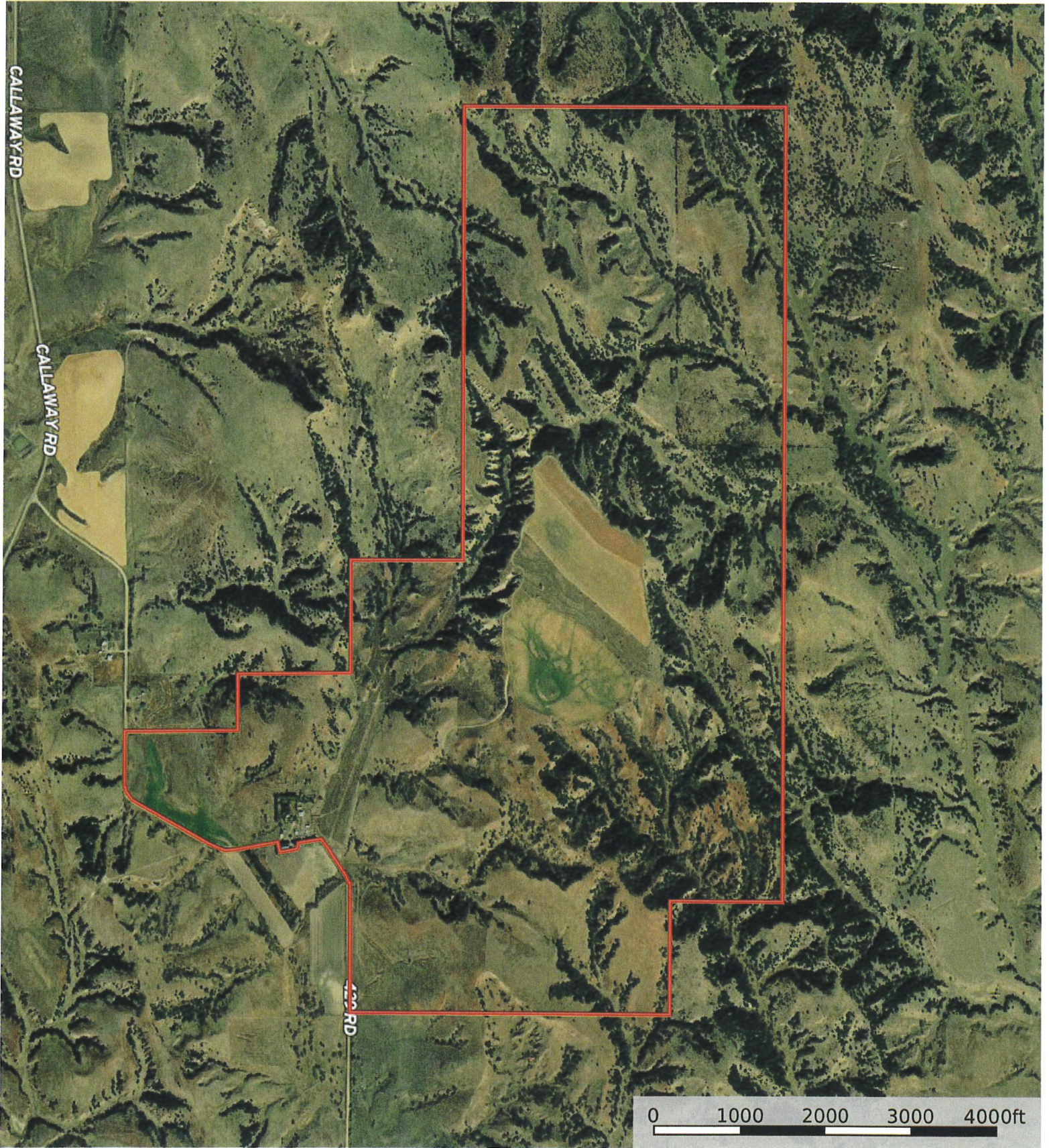


L-2300494

Custer County, Nebraska, 1176.49 AC +/-

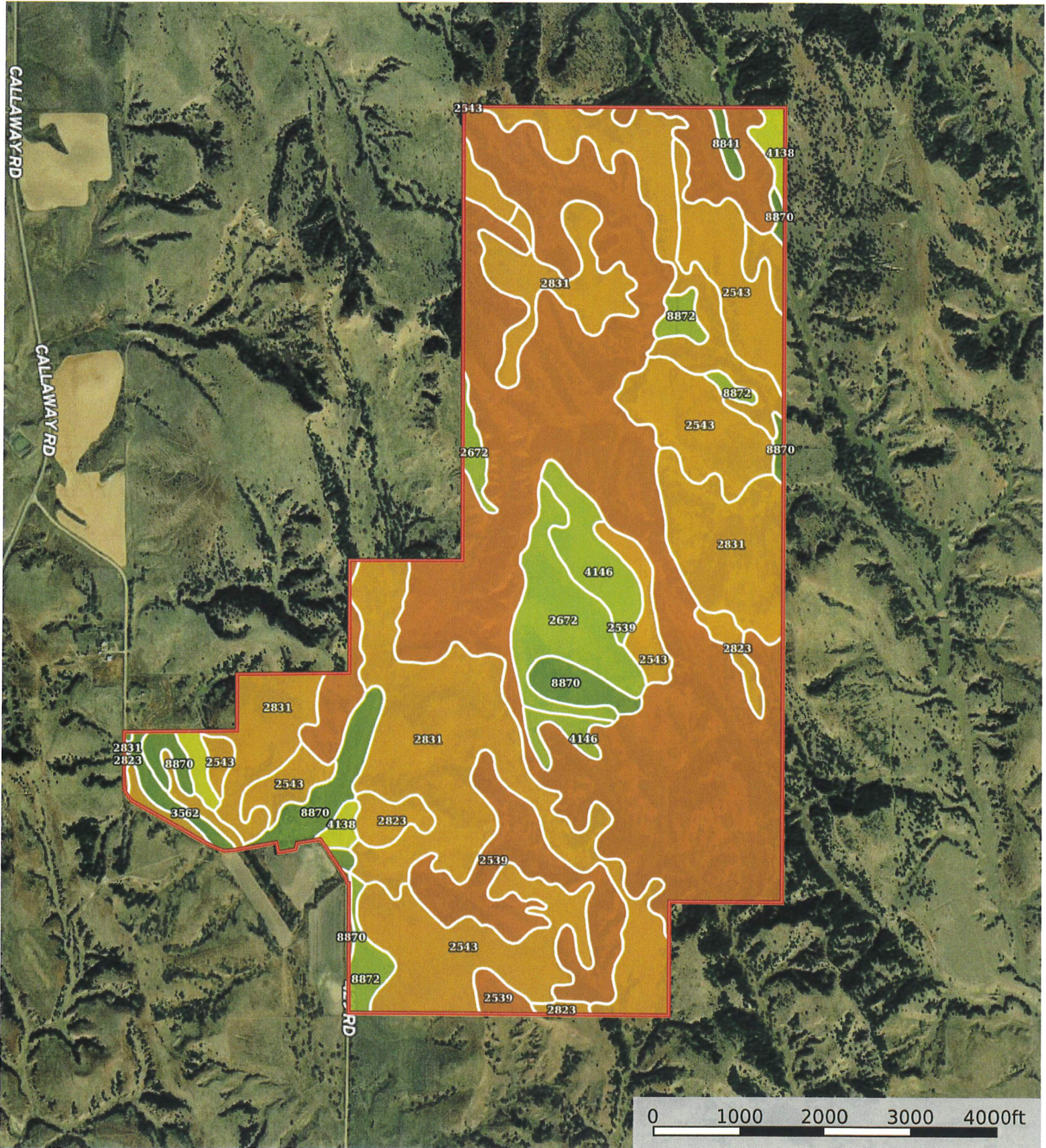


 Boundary



L-2300494

Custer County, Nebraska, 1176.49 AC +/-

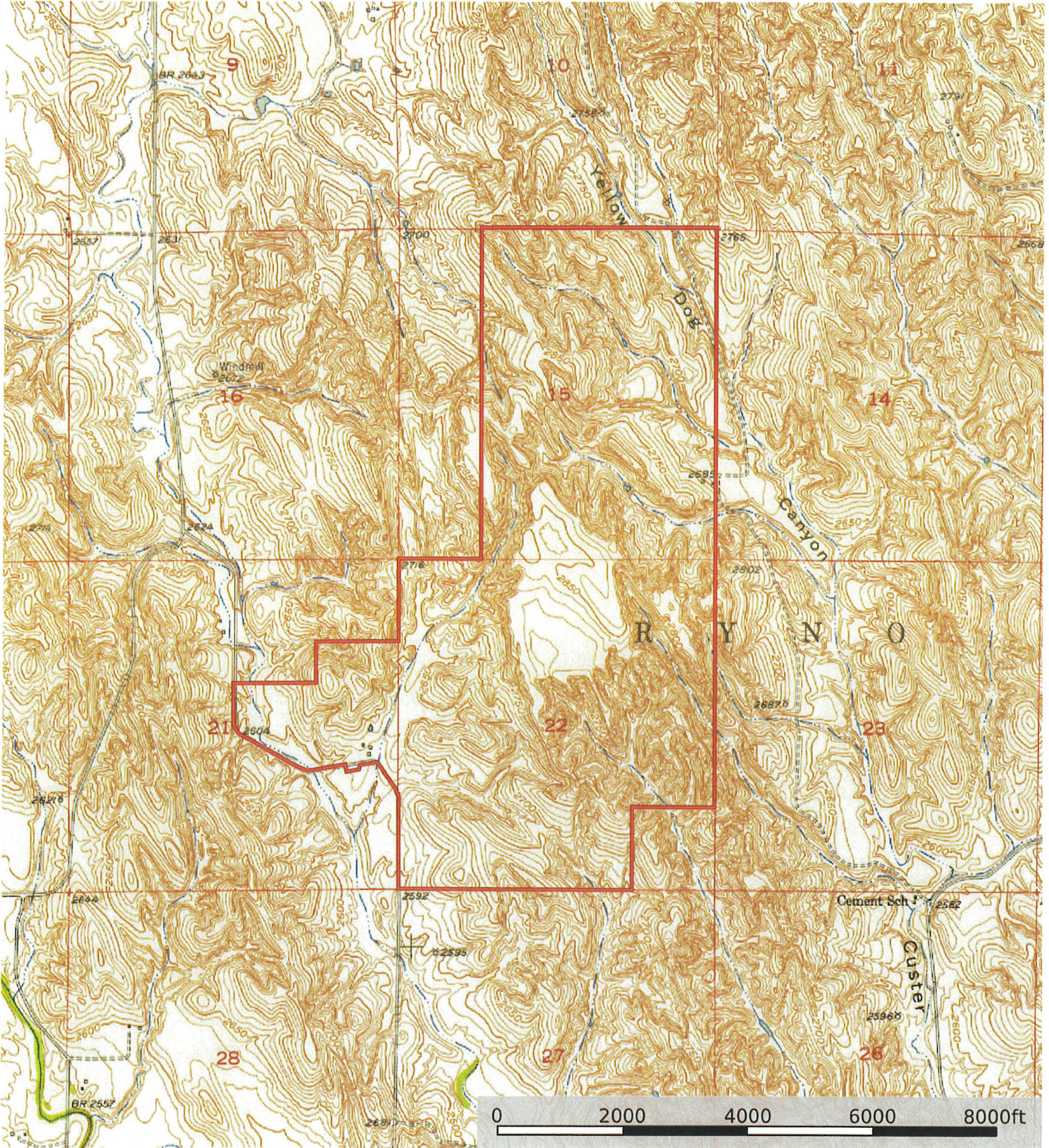


Boundary



L-2300494

Custer County, Nebraska, 1176.49 AC +/-

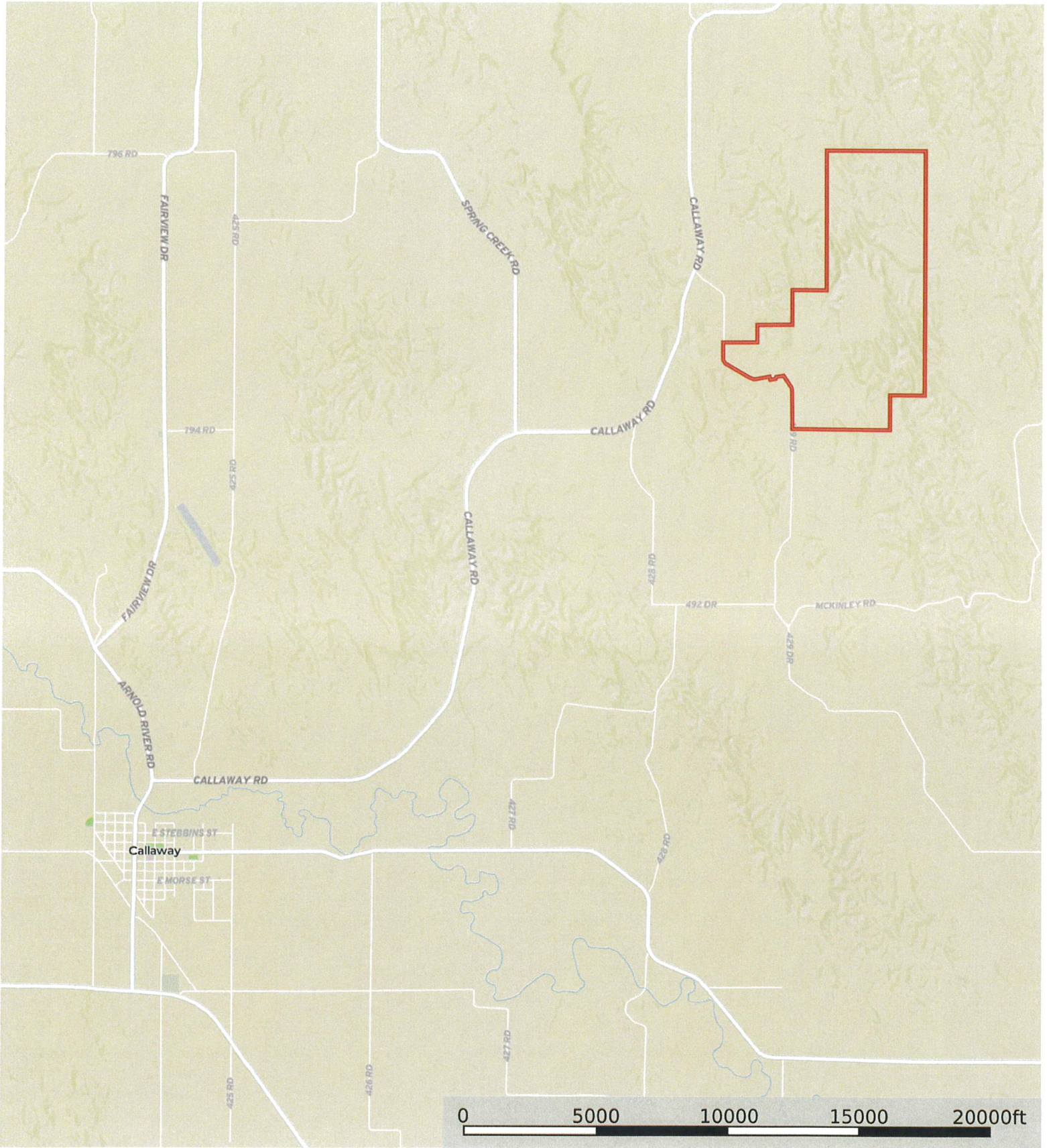


Boundary



L-2300494

Custer County, Nebraska, 1176.49 AC +/-



 Boundary



|  Boundary 1127.26 ac









SOIL CODE	SOIL DESCRIPTION	ACRES	%	CPI	NCCPI	CAP
2539	Coly-Hobbs silt loams, 3 to 60 percent slopes	476.89	42.31	0	24	7e
2831	Uly-Coly silt loams, 17 to 30 percent slopes, eroded	301.08	26.71	0	49	6e
2543	Coly silt loam, 11 to 17 percent slopes, eroded, cool	172.33	15.29	0	53	6e
2672	Holdrege silty clay loam, 3 to 7 percent slopes, eroded	46.81	4.15	0	64	3e
8870	Hord silt loam, 1 to 3 percent slopes	40.4	3.58	0	75	2e
4146	Holdrege silty clay loam, 7 to 11 percent slopes, eroded	28.89	2.56	0	63	3e
2823	Uly silt loam, 11 to 17 percent slopes, eroded	18.6	1.65	0	61	6e
8872	Hord silt loam, 3 to 6 percent slopes	16.7	1.48	0	61	3e
4138	Holdrege silt loam, 7 to 11 percent slopes	14.44	1.28	0	74	4e
3562	Hobbs silt loam, occasionally flooded, cool	8.06	0.72	0	74	2w
8841	Hall silt loam, 1 to 3 percent slopes	3.06	0.27	0	60	2e
TOTALS		1127.26(*)	100%	-	41.86	5.97

(\*) Total acres may differ in the second decimal compared to the sum of each acreage soil. This is due to a round error because we only show the acres of each soil with two decimal.

## Capability Legend

Increased Limitations and Hazards

Decreased Adaptability and Freedom of Choice Users

Land, Capability								
	1	2	3	4	5	6	7	8
'Wild Life'	•	•	•	•	•	•	•	•
Forestry	•	•	•	•	•	•	•	
Limited	•	•	•	•	•	•	•	
Moderate	•	•	•	•	•	•		
Intense	•	•	•	•	•			
Limited	•	•	•	•				
Moderate	•	•	•					
Intense	•	•						
Very Intense	•							

### Grazing Cultivation

(c) climatic limitations (e) susceptibility to erosion

(s) soil limitations within the rooting zone (w) excess of water