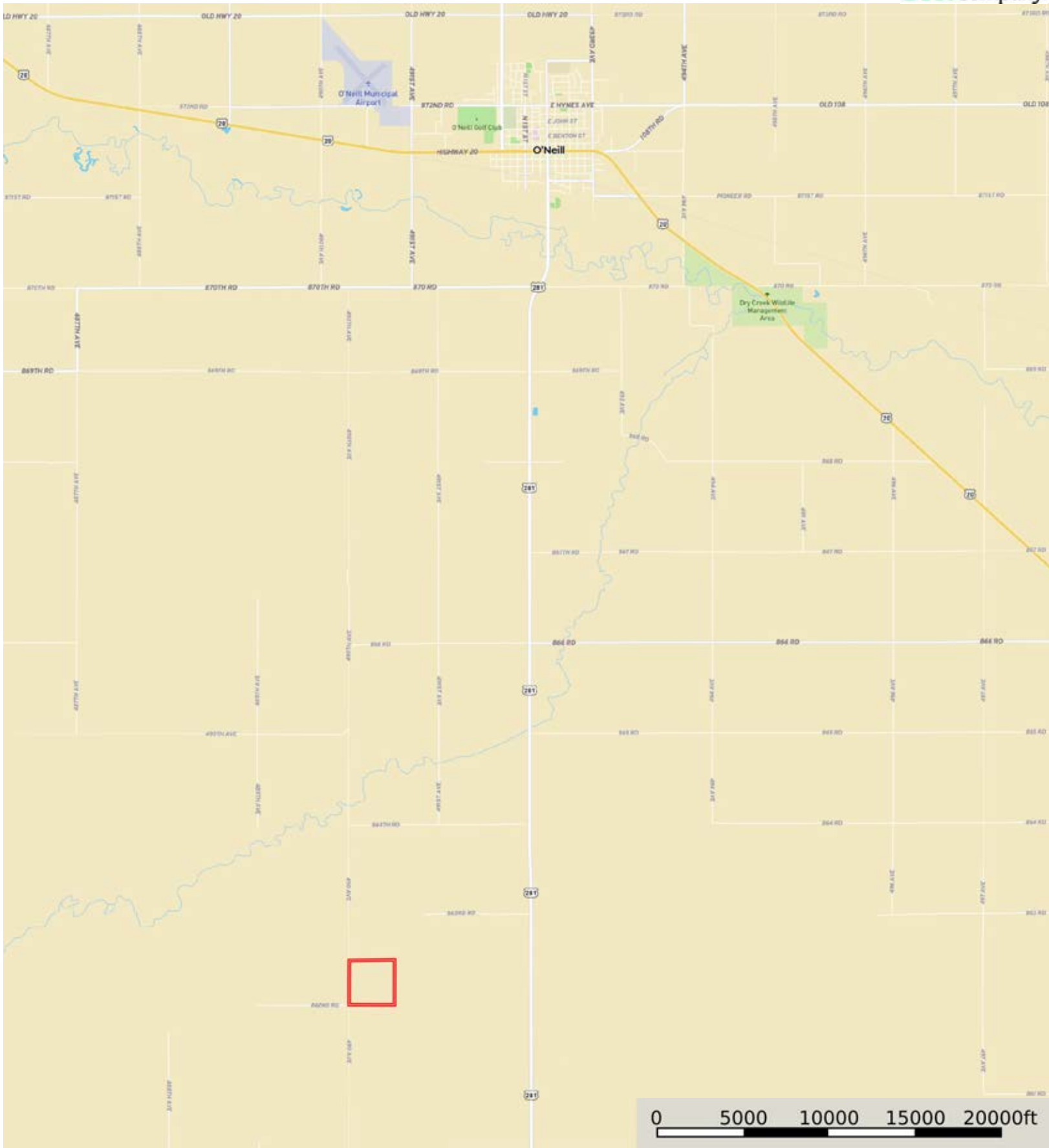


L-2300504

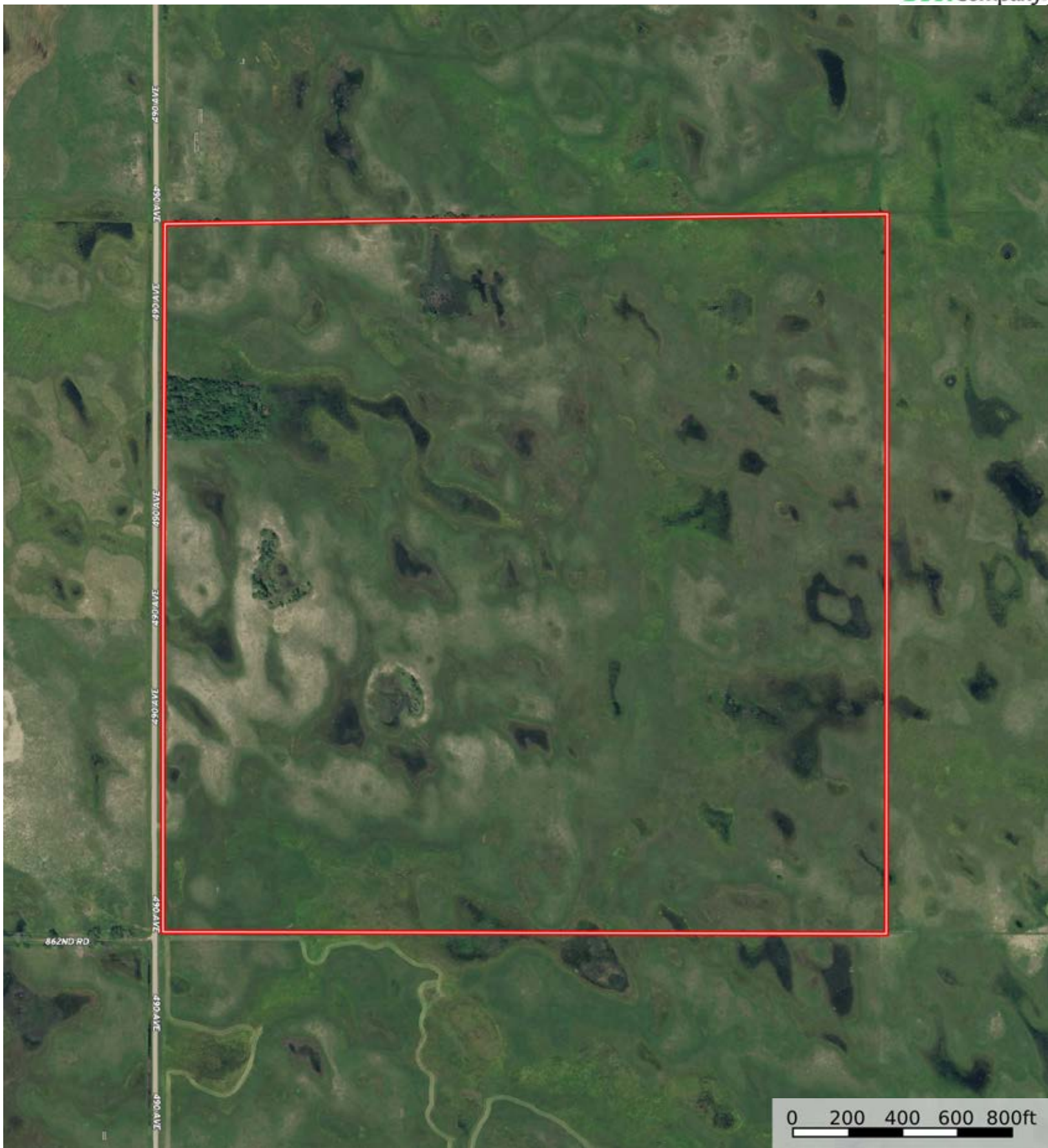
Holt County, Nebraska, 160 AC +/-



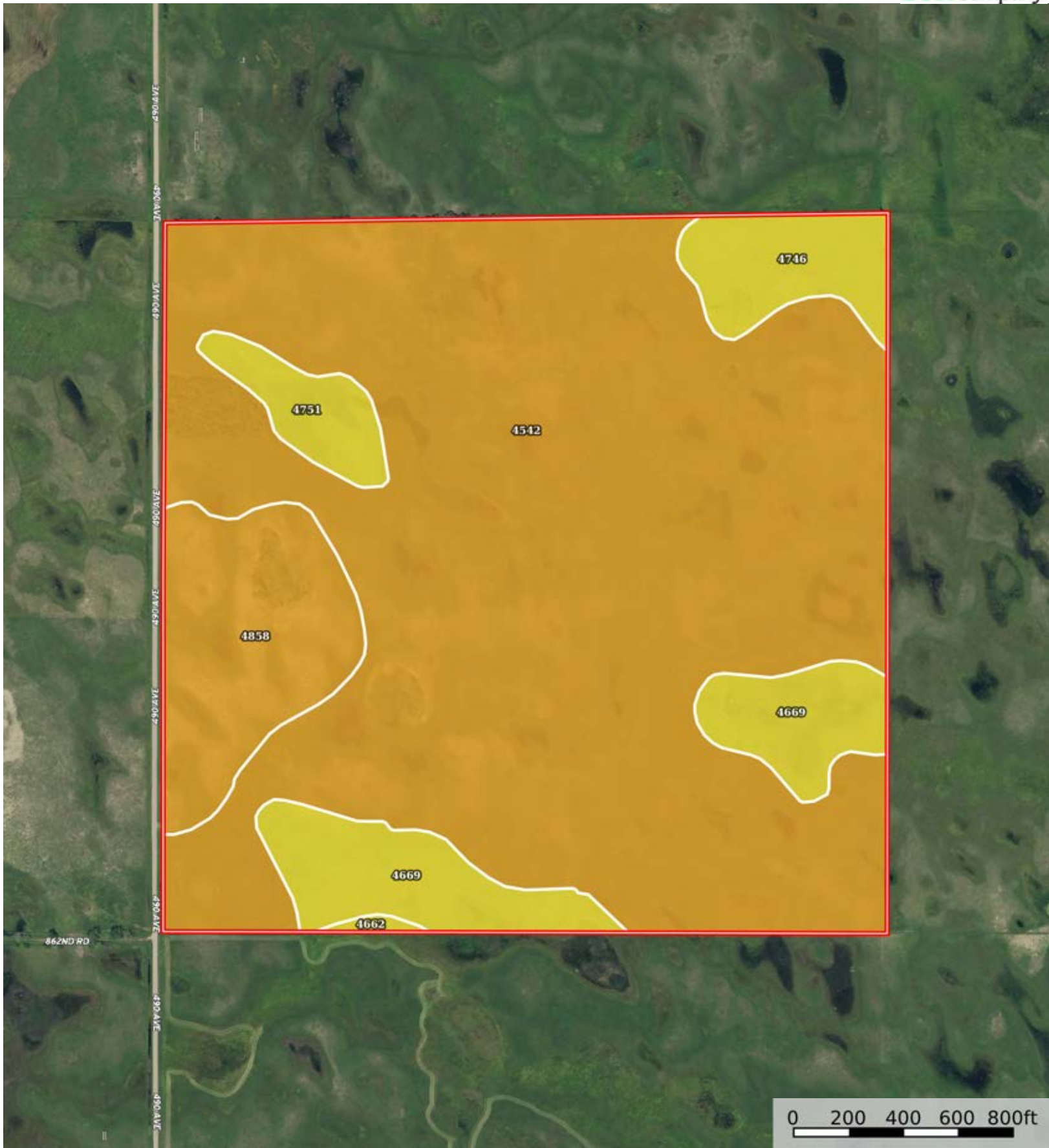
Boundary


L-2300504

Holt County, Nebraska, 160 AC +/-



 Boundary



 Boundary

|  Boundary 158.0 ac

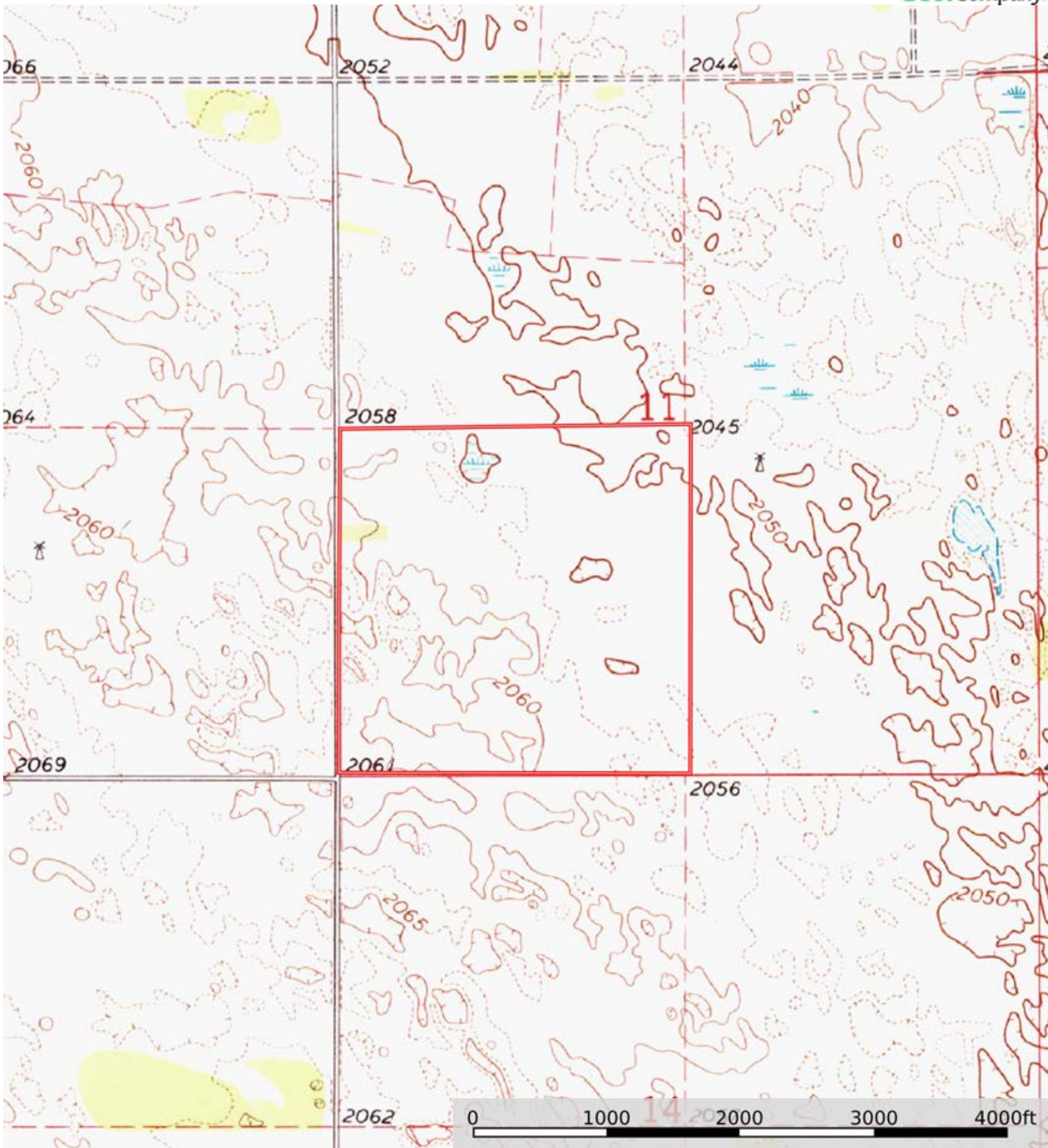
SOIL CODE	SOIL DESCRIPTION	ACRES	%	CPI	NCCPI	CAP
4542	Els-lpage complex, 0 to 3 percent slopes	119.83	75.84	0	19	6w
4858	Valentine-Els complex, moist, 0 to 9 percent slopes	14.19	8.98	0	21	6e
4669	Loup fine sandy loam, frequently ponded	13.38	8.47	0	6	5w
4746	Tryon loamy fine sand, 0 to 3 percent slopes	6.25	3.96	0	17	5w
4751	Tryon loamy fine sand, frequently ponded, 0 to 3 percent slopes	3.97	2.51	0	4	5w
4662	Loup fine sandy loam, 0 to 1 percent slopes	0.38	0.24	30	18	5w
TOTALS		158.0(*)	100%	0.07	17.62	5.85


(*) Total acres may differ in the second decimal compared to the sum of each acreage soil. This is due to a round error because we only show the acres of each soil with two decimal.



L-2300504

Holt County, Nebraska, 160 AC +/-



 Boundary