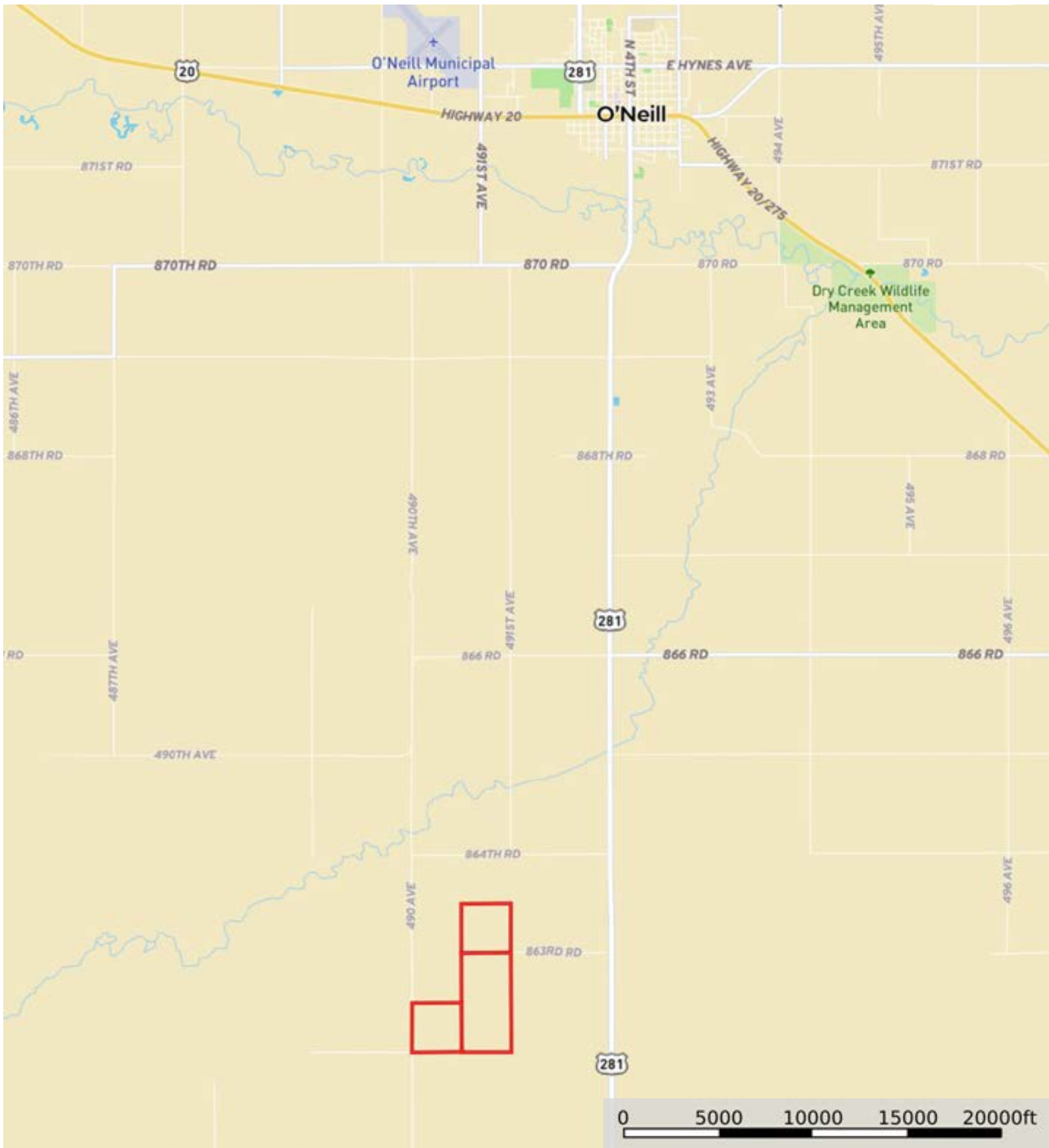



L-2300504

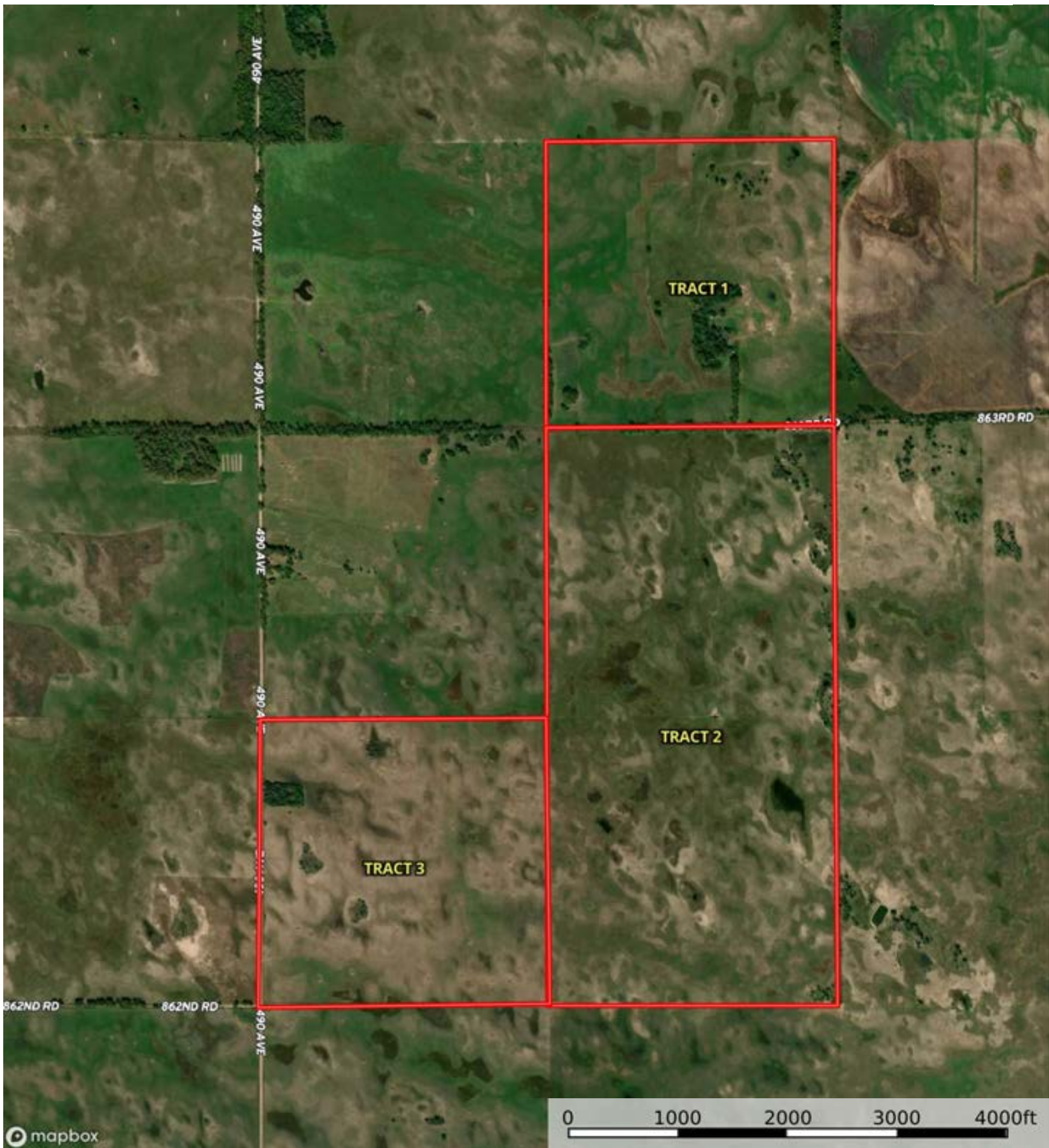
Holt County, Nebraska, 640 AC +/-




 Boundary

L-2300504

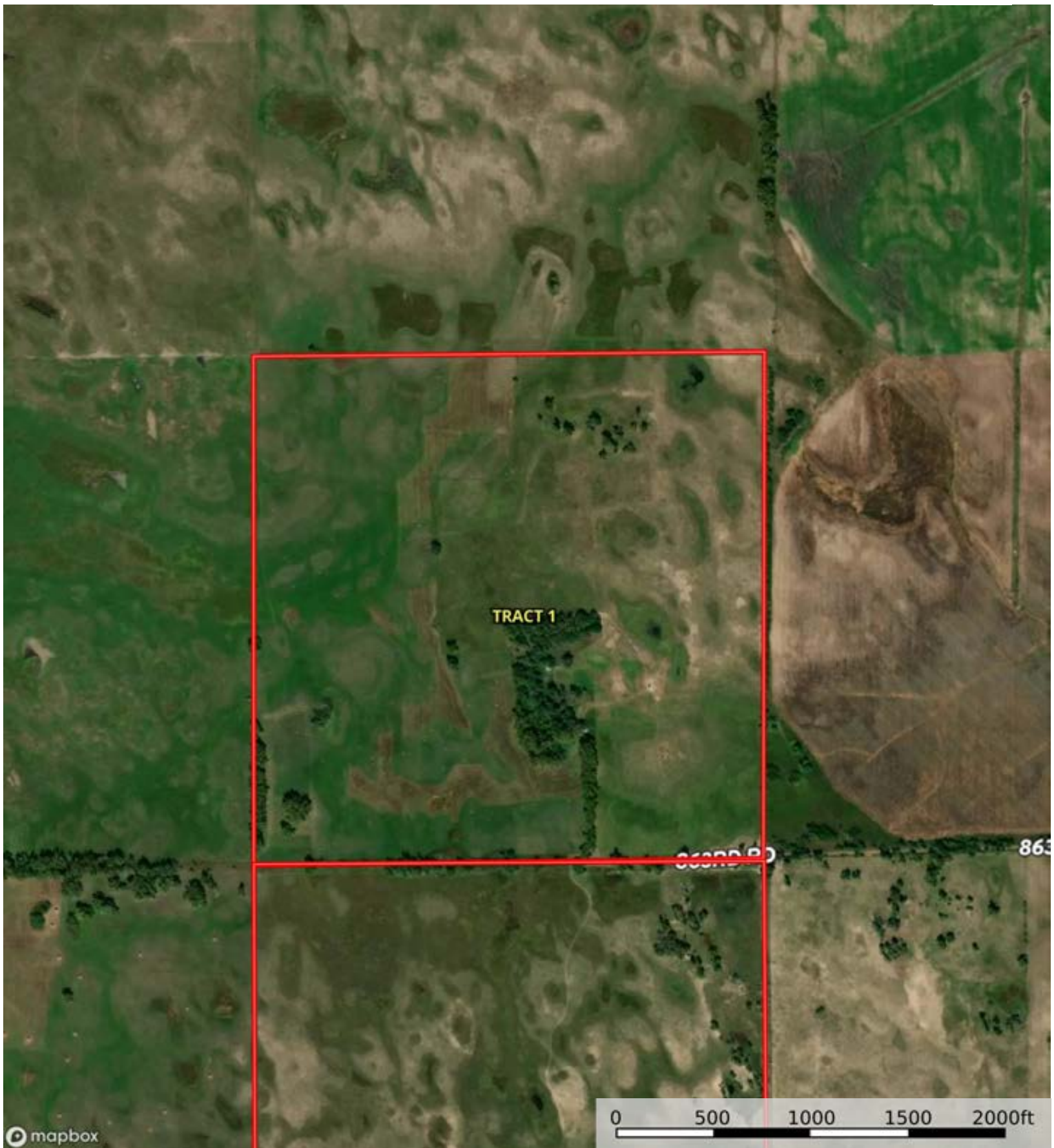
Holt County, Nebraska, 640 AC +/-




 Boundary

L-2300504

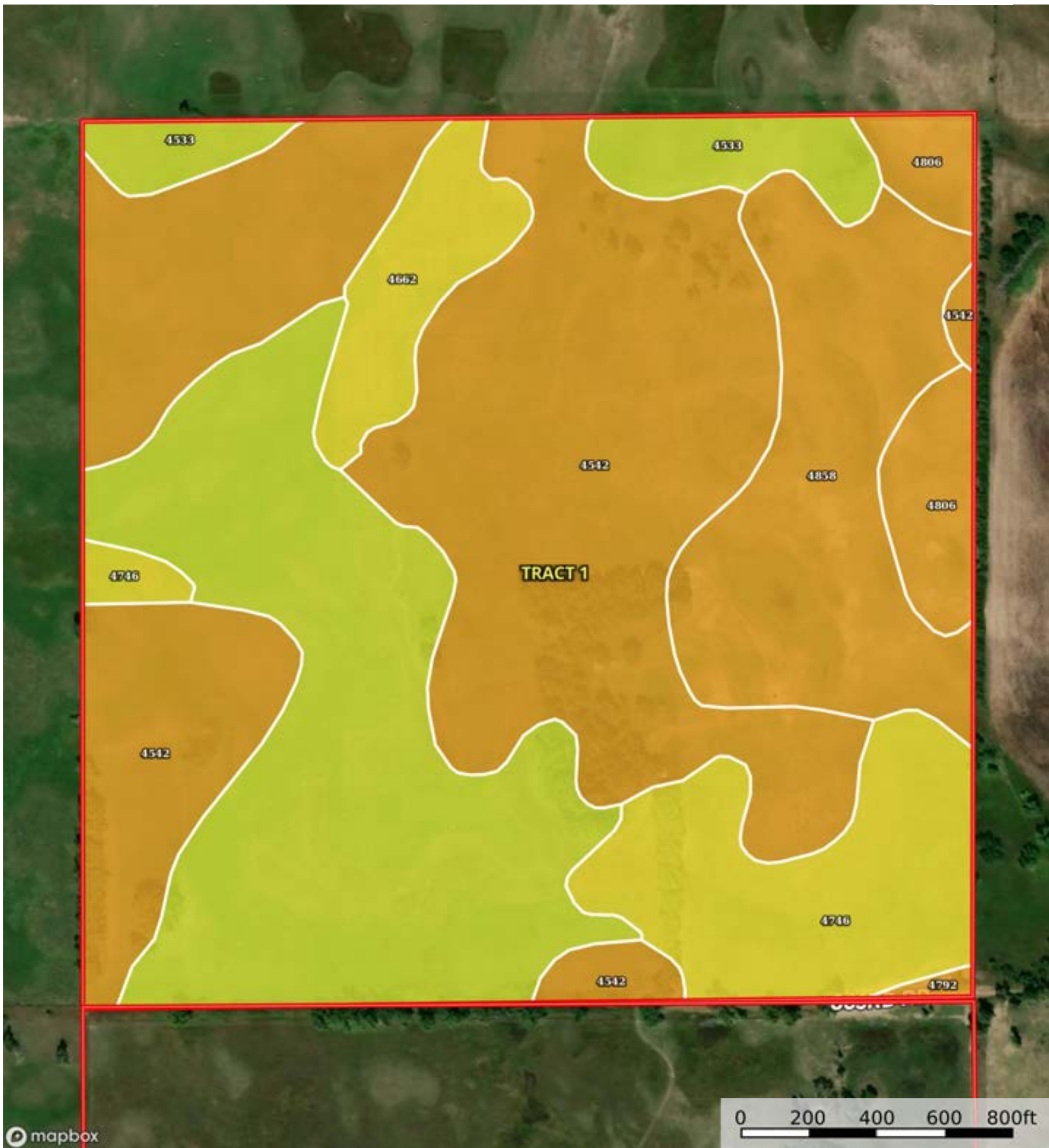
Holt County, Nebraska, 640 AC +/-



 Boundary

L-2300504

Holt County, Nebraska, 640 AC +/-



Boundary



The information contained herein was obtained from sources deemed to be reliable. Land id™ Services makes no warranties or guarantees as to the completeness or accuracy thereof.

|  Boundary 158.17 ac

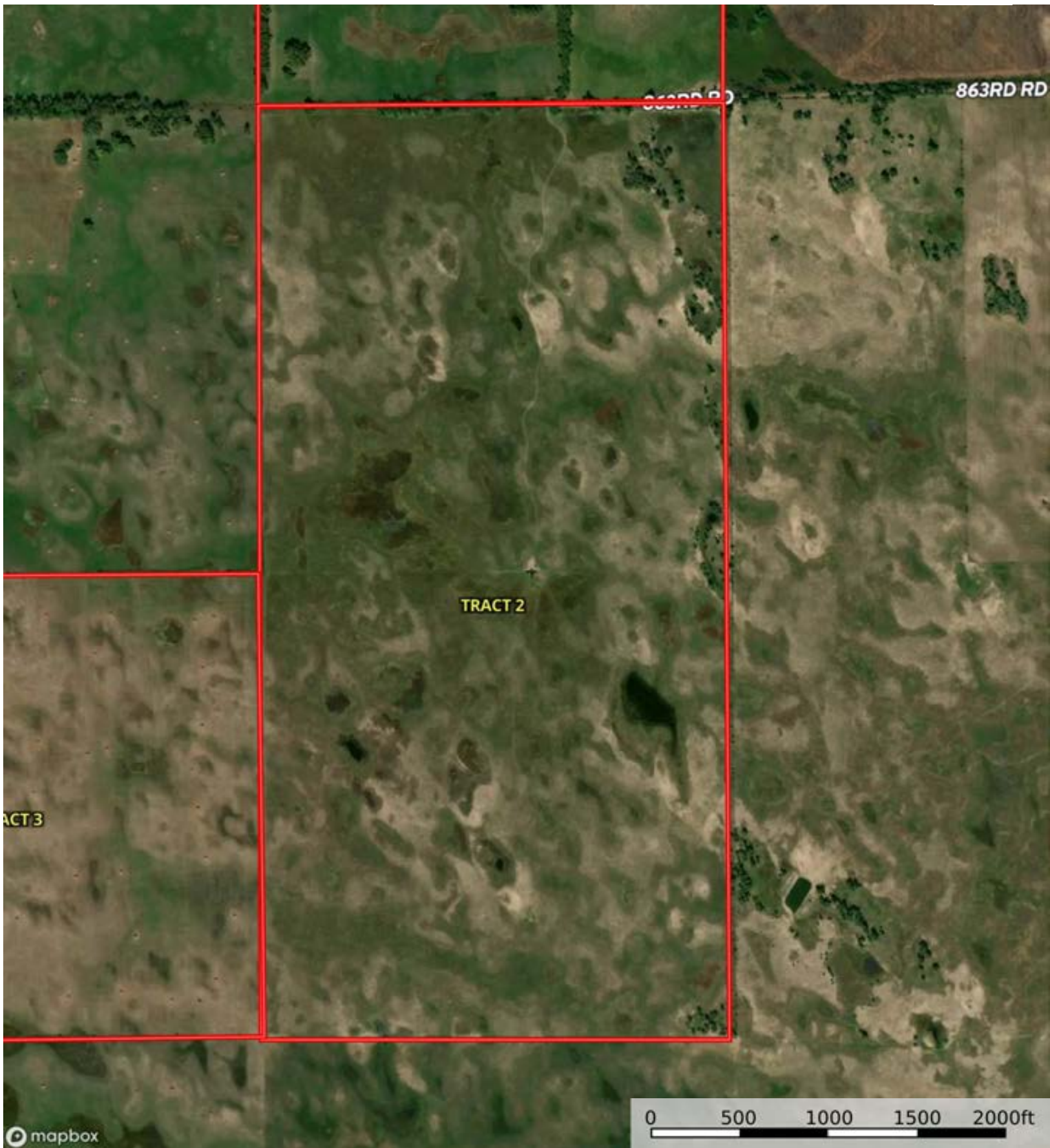
SOIL CODE	SOIL DESCRIPTION	ACRES	%	CPI	NCCPI	CAP
4542	Els-lpage complex, 0 to 3 percent slopes	65.4	41.35	0	19	6w
4533	Els loamy sand, 0 to 3 percent slopes	43.75	27.66	0	21	4w
4858	Valentine-Els complex, moist, 0 to 9 percent slopes	20.47	12.94	0	21	6e
4746	Tryon loamy fine sand, 0 to 3 percent slopes	15.89	10.05	0	17	5w
4662	Loup fine sandy loam, 0 to 1 percent slopes	6.33	4.0	30	18	5w
4806	Valentine fine sand, rolling, 9 to 24 percent slopes, moist	5.96	3.77	0	17	6e
4792	Valentine fine sand, 3 to 9 percent slopes, moist	0.37	0.23	0	22	6e
TOTALS		158.17(*)	100%	1.2	19.5	5.31


(*) Total acres may differ in the second decimal compared to the sum of each acreage soil. This is due to a round error because we only show the acres of each soil with two decimal.



L-2300504

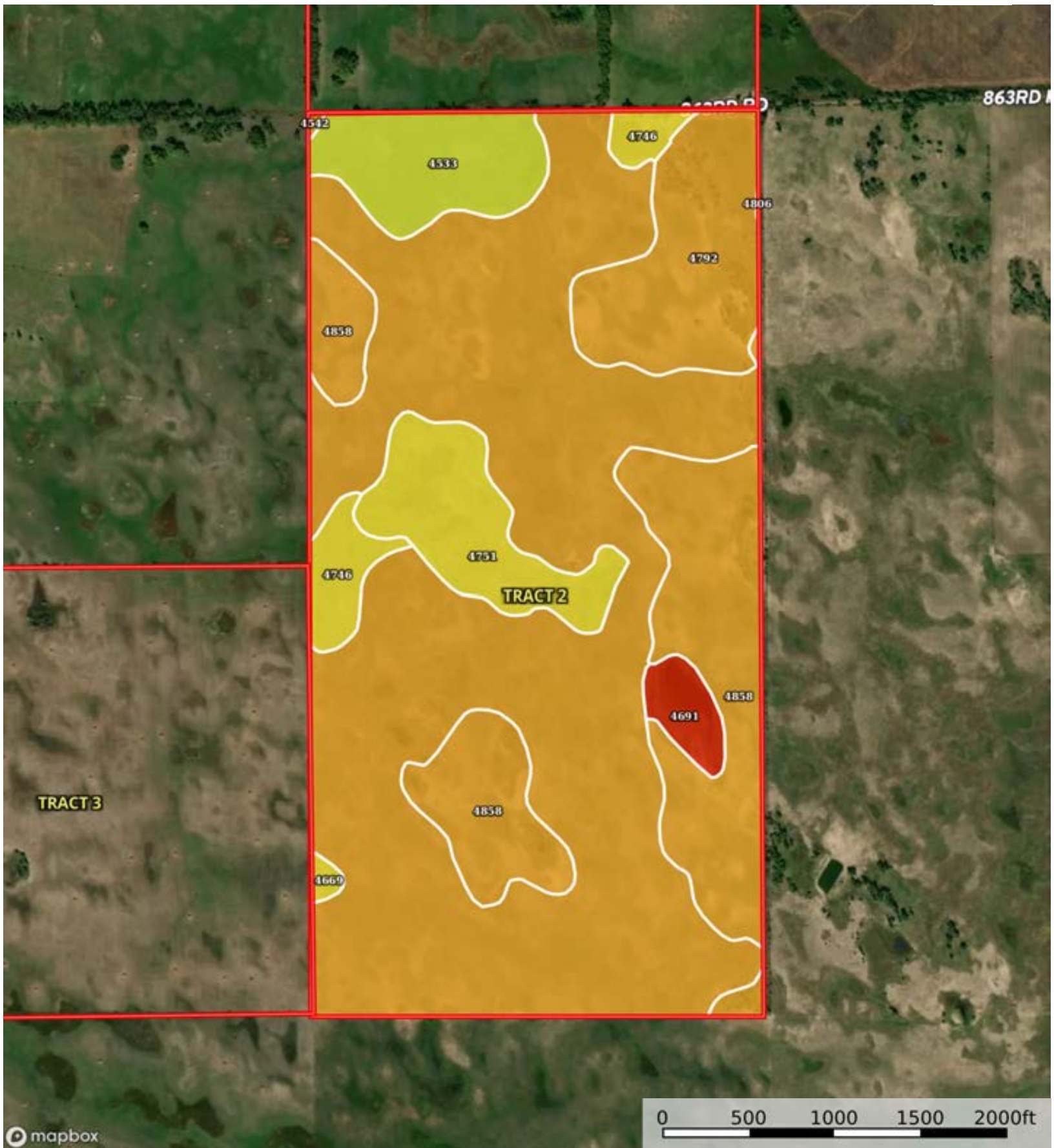
Holt County, Nebraska, 640 AC +/-



 Boundary

L-2300504

Holt County, Nebraska, 640 AC +/-



Boundary

Boundary 320.99 ac

SOIL CODE	SOIL DESCRIPTION	ACRES	%	CPI	NCCPI	CAP
4542	Els-lpage complex, 0 to 3 percent slopes	184.45	57.46	0	19	6w
4858	Valentine-Els complex, moist, 0 to 9 percent slopes	57.08	17.78	0	21	6e
4792	Valentine fine sand, 3 to 9 percent slopes, moist	26.86	8.37	0	22	6e
4751	Tryon loamy fine sand, frequently ponded, 0 to 3 percent slopes	19.88	6.19	0	4	5w
4533	Els loamy sand, 0 to 3 percent slopes	17.9	5.58	0	21	4w
4746	Tryon loamy fine sand, 0 to 3 percent slopes	8.74	2.72	0	17	5w
4691	Marlake mucky peat	4.89	1.52	6	1	8w
4669	Loup fine sandy loam, frequently ponded	0.92	0.29	0	6	5w
4806	Valentine fine sand, rolling, 9 to 24 percent slopes, moist	0.27	0.08	0	17	6e
TOTALS		320.99(*)	100%	0.09	18.42	5.83

(*) Total acres may differ in the second decimal compared to the sum of each acreage soil. This is due to a round error because we only show the acres of each soil with two decimal.



L-2300504

Holt County, Nebraska, 640 AC +/-

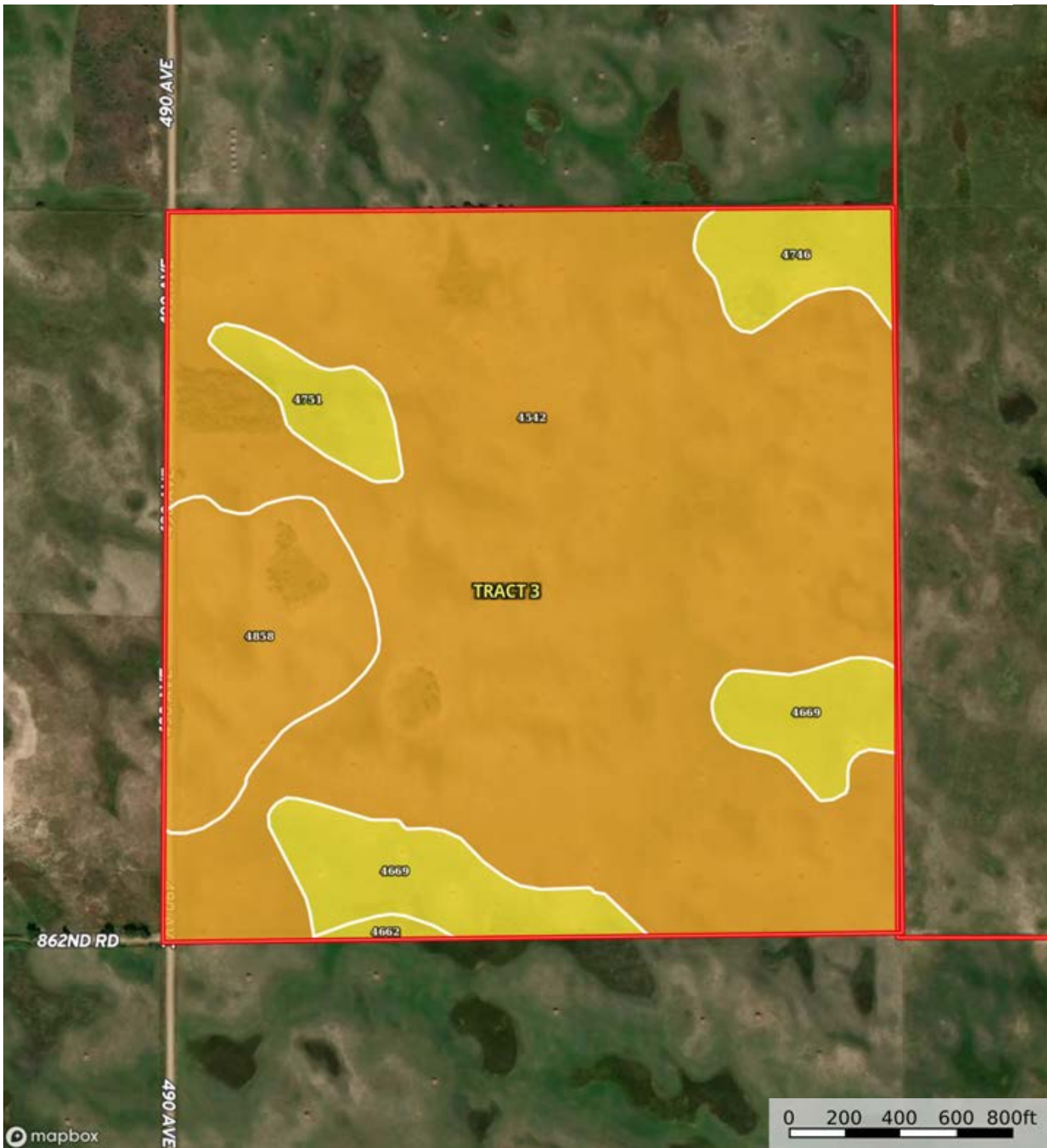



mapbox

Boundary

L-2300504

Holt County, Nebraska, 640 AC +/-



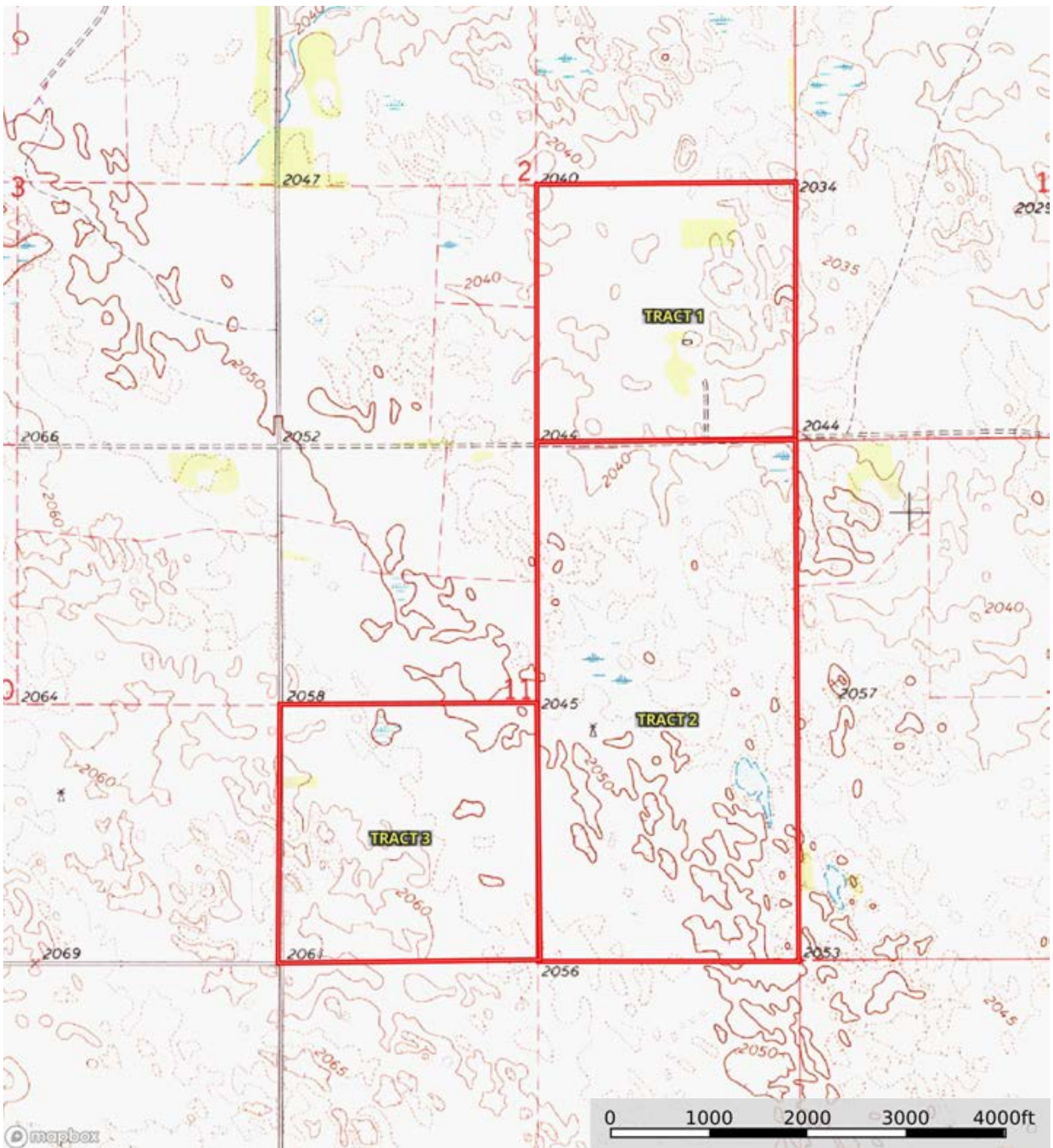
 Boundary


Boundary 159.22 ac

SOIL CODE	SOIL DESCRIPTION	ACRES	%	CPI	NCCPI	CAP
4542	Els-lpage complex, 0 to 3 percent slopes	120.3 1	75.56	0	19	6w
4858	Valentine-Els complex, moist, 0 to 9 percent slopes	15.15	9.52	0	21	6e
4669	Loup fine sandy loam, frequently ponded	13.51	8.49	0	6	5w
4746	Tryon loamy fine sand, 0 to 3 percent slopes	5.6	3.52	0	17	5w
4751	Tryon loamy fine sand, frequently ponded, 0 to 3 percent slopes	3.97	2.49	0	4	5w
4662	Loup fine sandy loam, 0 to 1 percent slopes	0.68	0.43	30	18	5w
TOTALS		159.2 2(*)	100%	0.13	17.64	5.85

(*) Total acres may differ in the second decimal compared to the sum of each acreage soil. This is due to a round error because we only show the acres of each soil with two decimal.





 Boundary