
 Boundary






 Boundary



L-2300506

Harvey County, Kansas, 151.5 AC +/-



 Boundary



The information contained herein was obtained from sources deemed to be reliable. Land id™ Services makes no warranties or guarantees as to the completeness or accuracy thereof.

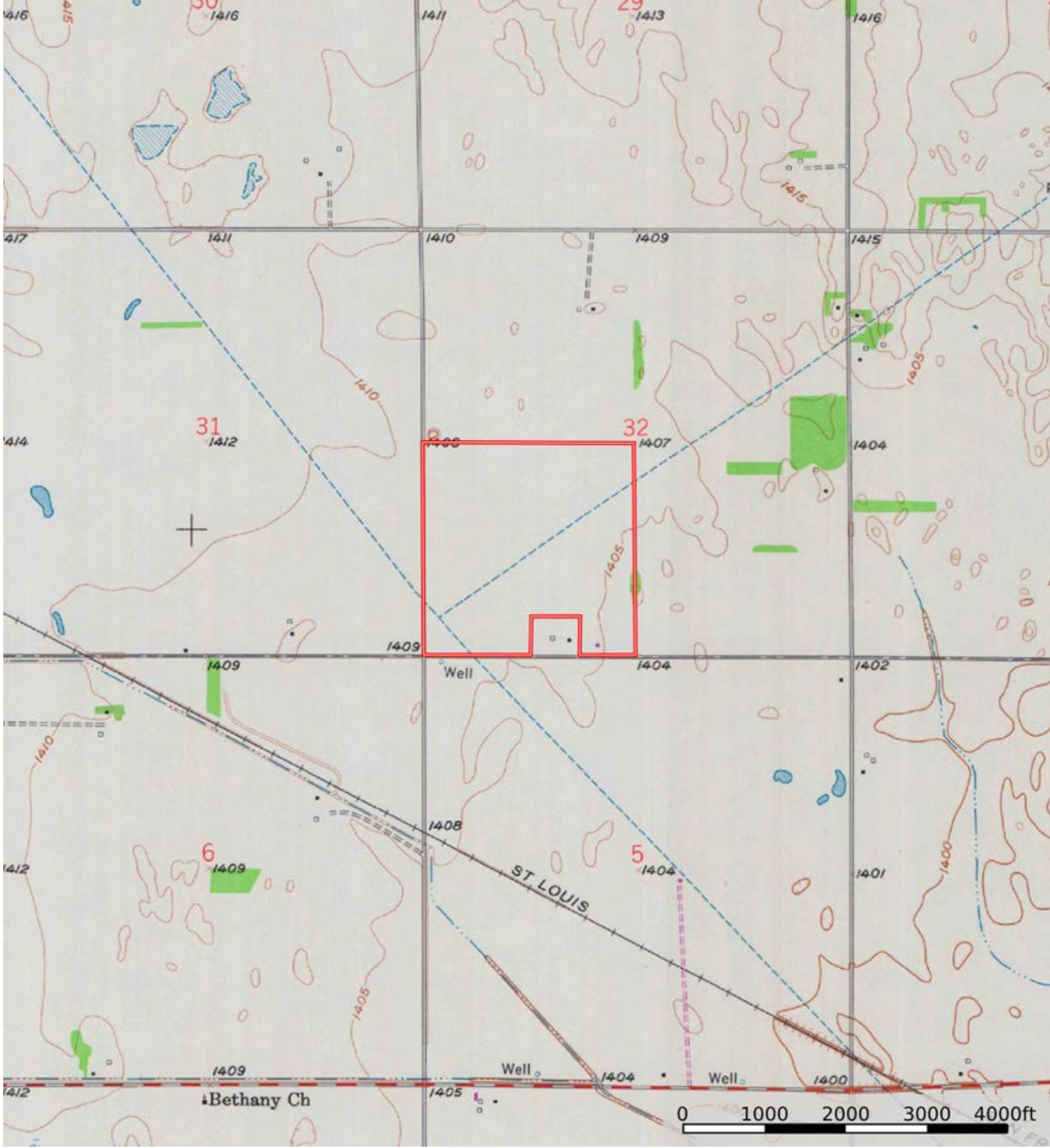
|  Boundary 151.39 ac

SOIL CODE	SOIL DESCRIPTION	ACRES	%	CPI	NCCPI	CAP
5896	Nalim-Shellabarger sandy loams, 0 to 1 percent slopes	60.71	40.1	0	59	2e
5943	Saltcreek and Naron fine sandy loams, 0 to 1 percent slopes	53.78	35.52	0	57	2c
5831	Punkin silt loam, 0 to 1 percent slopes	18.35	12.12	0	26	3s
5905	Hayes-Solvay loamy fine sands, 0 to 5 percent slopes	12.54	8.28	0	45	3e
5832	Punkin-Taver complex, 0 to 1 percent slopes	6.01	3.97	0	31	3s
TOTALS		151.39(*)	100%	-	52.01	2.24

(\*) Total acres may differ in the second decimal compared to the sum of each acreage soil. This is due to a round error because we only show the acres of each soil with two decimal.







 Boundary