


L-2300524

Douglas County, Kansas, 40 AC +/-



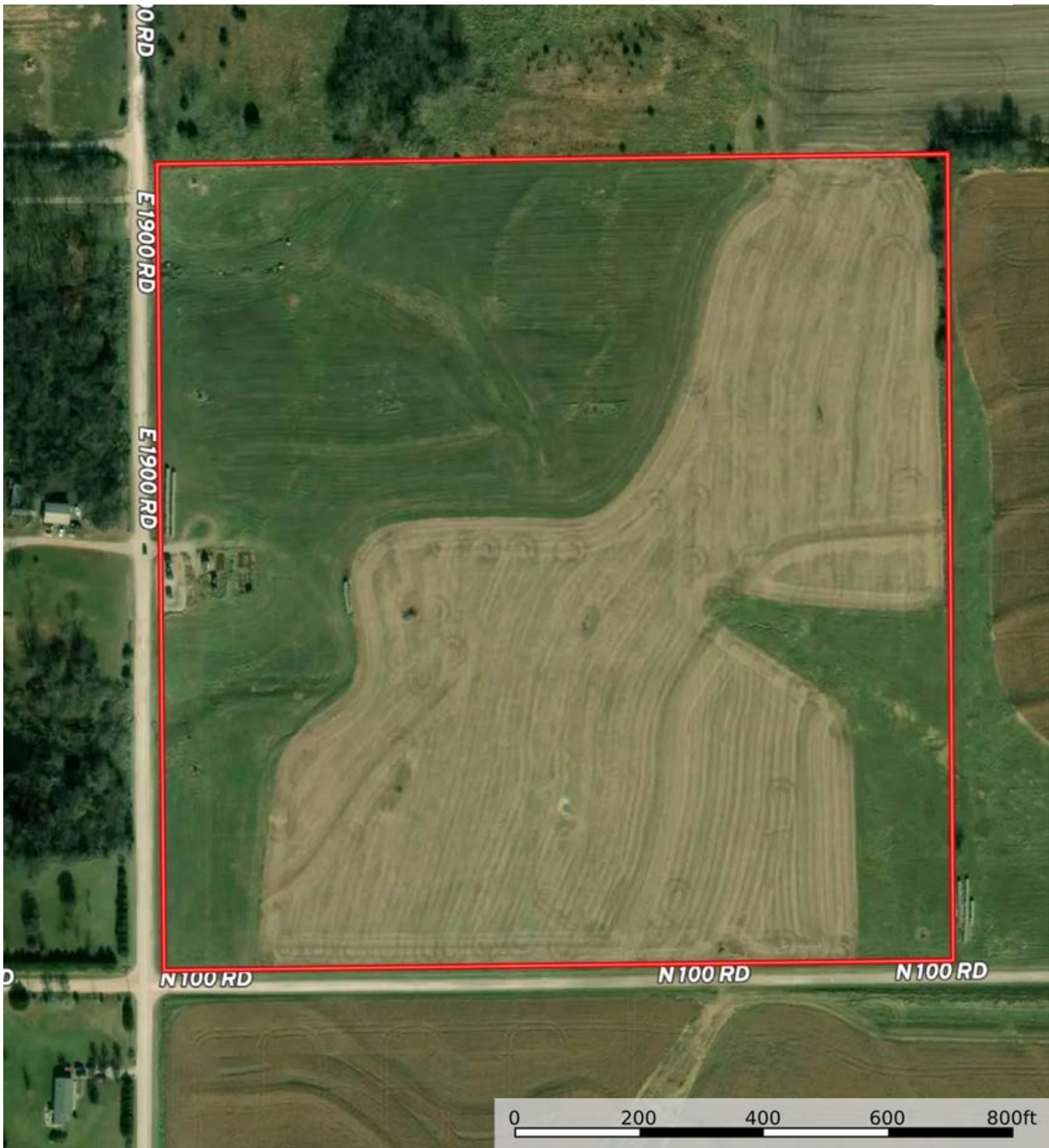
 Boundary



The information contained herein was obtained from sources deemed to be reliable. Land id™ Services makes no warranties or guarantees as to the completeness or accuracy thereof.

L-2300524

Douglas County, Kansas, 40 AC +/-



 Boundary

L-2300524

Douglas County, Kansas, 40 AC +/-



 Boundary

|  Boundary 37.93 ac

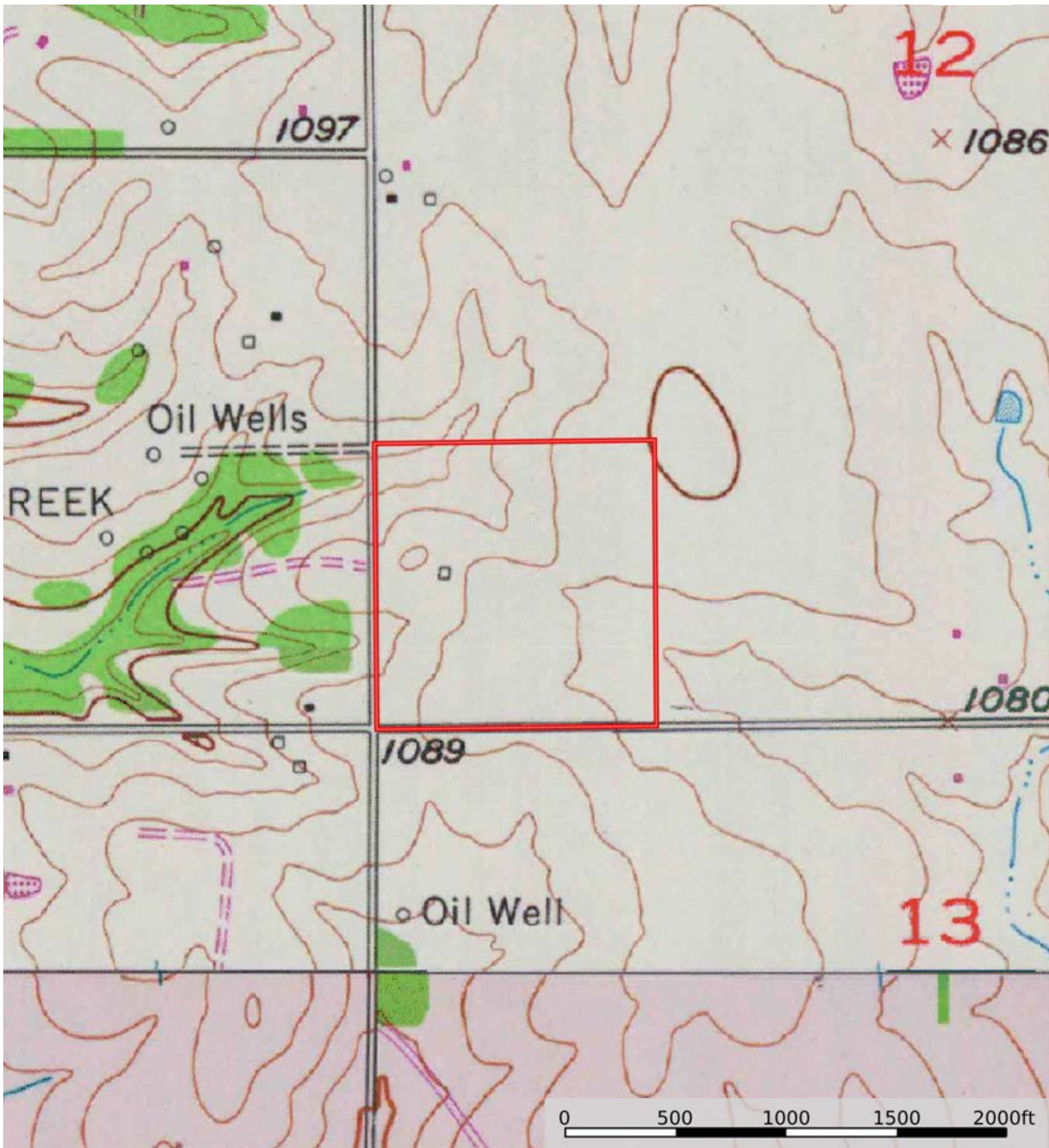
SOIL CODE	SOIL DESCRIPTION	ACRES	%	CPI	NCCPI	CAP
8962	Woodson silt loam, 1 to 3 percent slopes	26.01	68.56	0	51	2s
7603	Sibleyville loam, 3 to 7 percent slopes	8.08	21.3	0	52	3e
8964	Woodson silty clay loam, 1 to 3 percent slopes, eroded	3.84	10.12	0	50	4e
TOTALS		37.93(*)	100%	-	51.1	2.42


(*) Total acres may differ in the second decimal compared to the sum of each acreage soil. This is due to a round error because we only show the acres of each soil with two decimal.



L-2300524

Douglas County, Kansas, 40 AC +/-



 Boundary