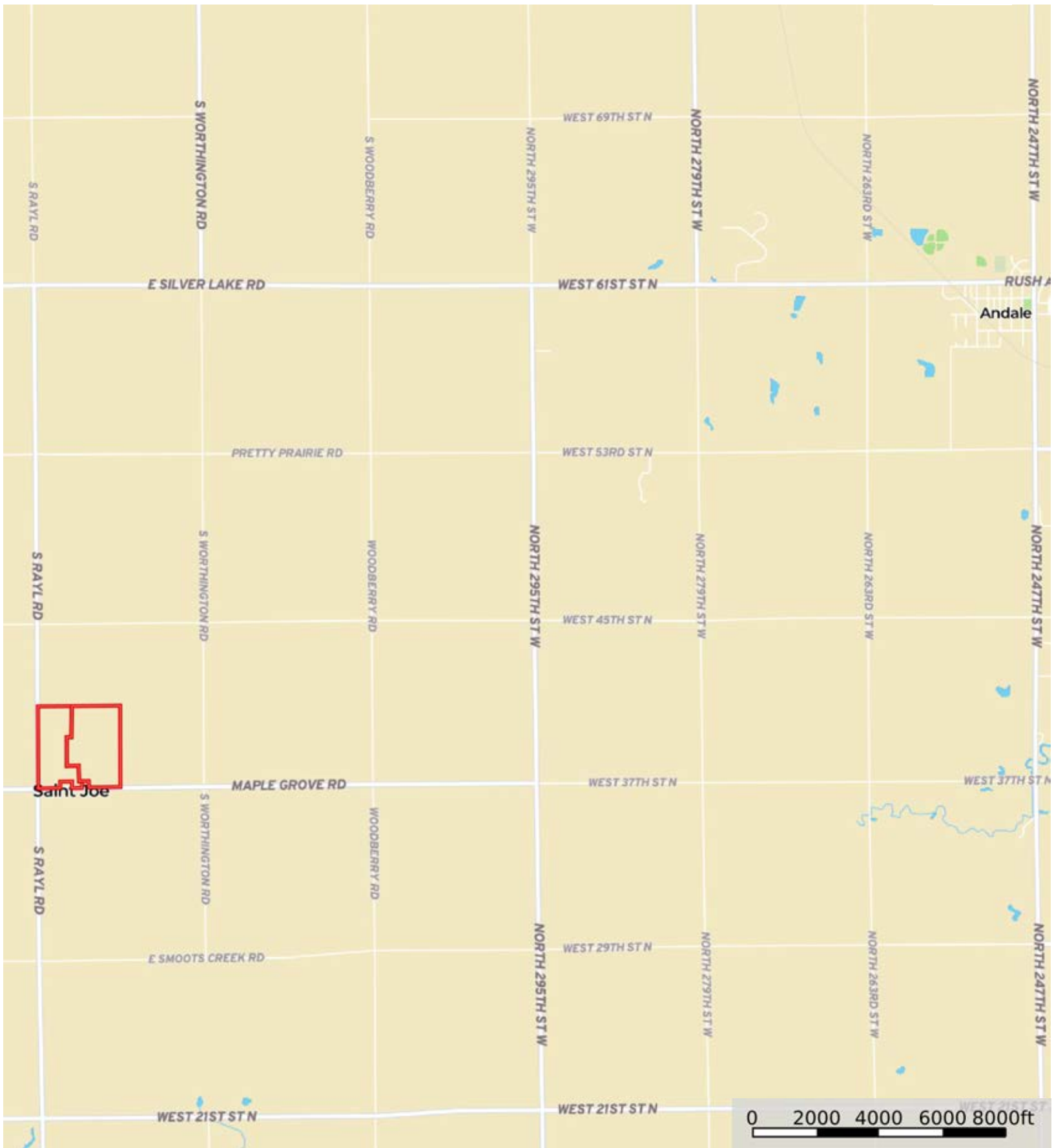



L-2300555

Reno County, Kansas, 151.45 AC +/-



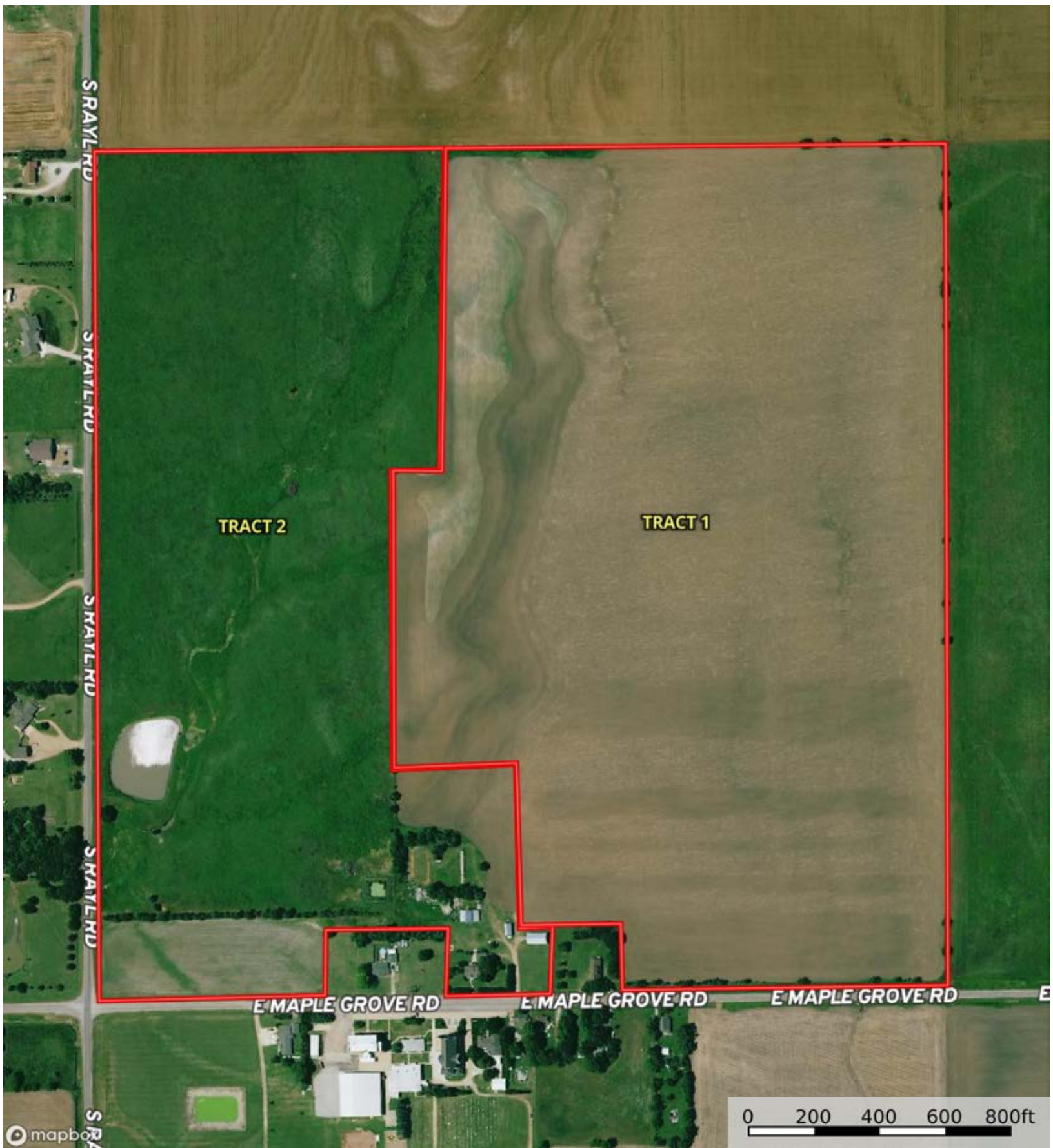
 Boundary




The information contained herein was obtained from sources deemed to be reliable. Land id™ Services makes no warranties or guarantees as to the completeness or accuracy thereof.

L-2300555

Reno County, Kansas, 151.45 AC +/-



 Boundary



The information contained herein was obtained from sources deemed to be reliable. Land id™ Services makes no warranties or guarantees as to the completeness or accuracy thereof.

L-2300555

Reno County, Kansas, 151.45 AC +/-



 Boundary



The information contained herein was obtained from sources deemed to be reliable. Land id™ Services makes no warranties or guarantees as to the completeness or accuracy thereof.

|  Boundary 89.59 ac

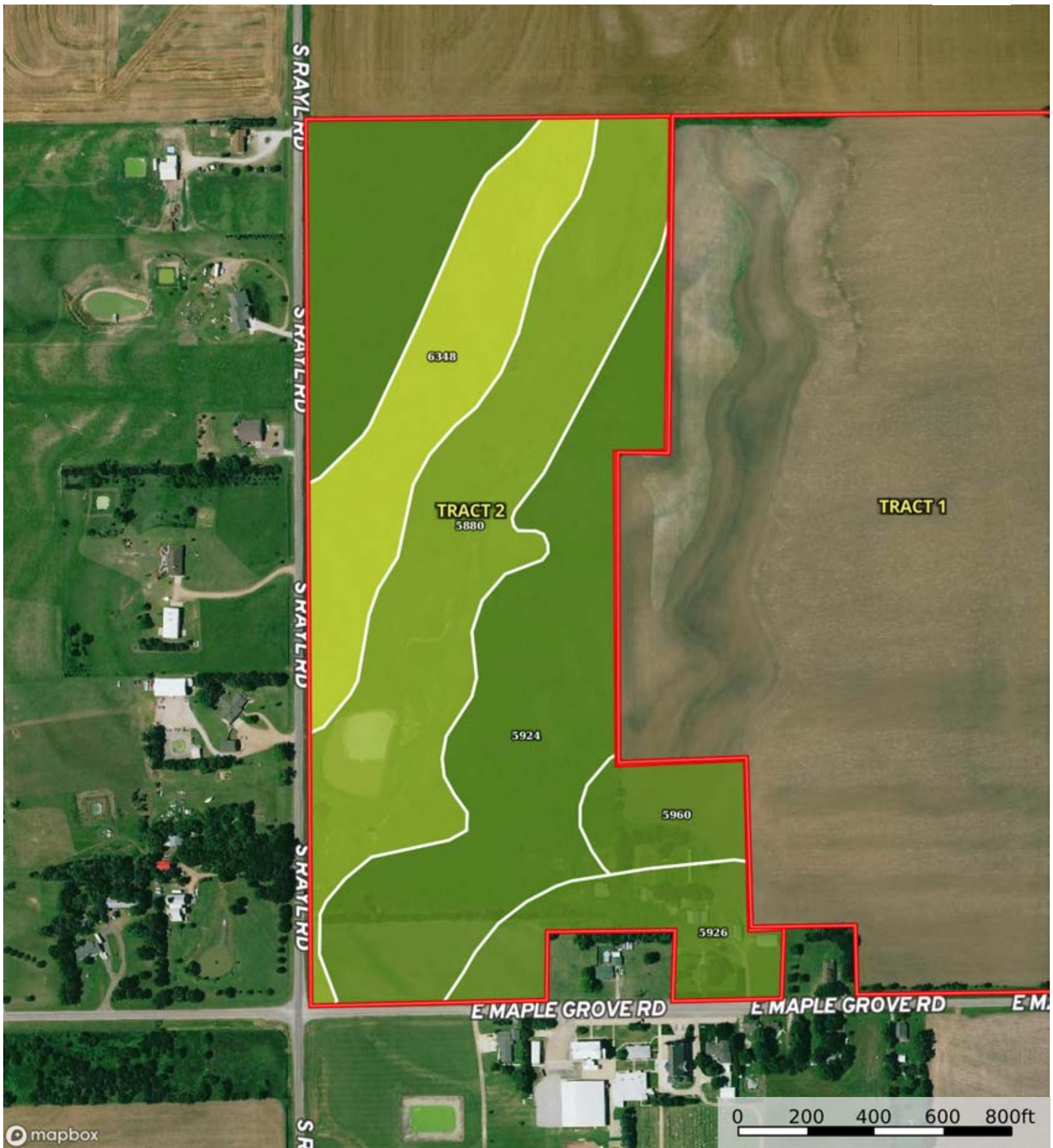
SOIL CODE	SOIL DESCRIPTION	ACRES	%	CPI	NCCPI	CAP
5960	Shellabarger-Nalim complex, 1 to 3 percent slopes	74.8	83.49	0	57	2e
5926	Penalosa silt loam, 1 to 3 percent slopes	7.46	8.33	0	59	2s
5924	Ost-Clark loams, 1 to 3 percent slopes	6.98	7.79	0	69	2e
5880	Clark-Ost loams, 3 to 7 percent slopes	0.35	0.39	0	65	3e
TOTALS		89.59(*)	100%	-	58.13	2.0

(*) Total acres may differ in the second decimal compared to the sum of each acreage soil. This is due to a round error because we only show the acres of each soil with two decimal.



L-2300555

Reno County, Kansas, 151.45 AC +/-



mapbox

Boundary



The information contained herein was obtained from sources deemed to be reliable. Land id™ Services makes no warranties or guarantees as to the completeness or accuracy thereof.

|  Boundary 62.43 ac

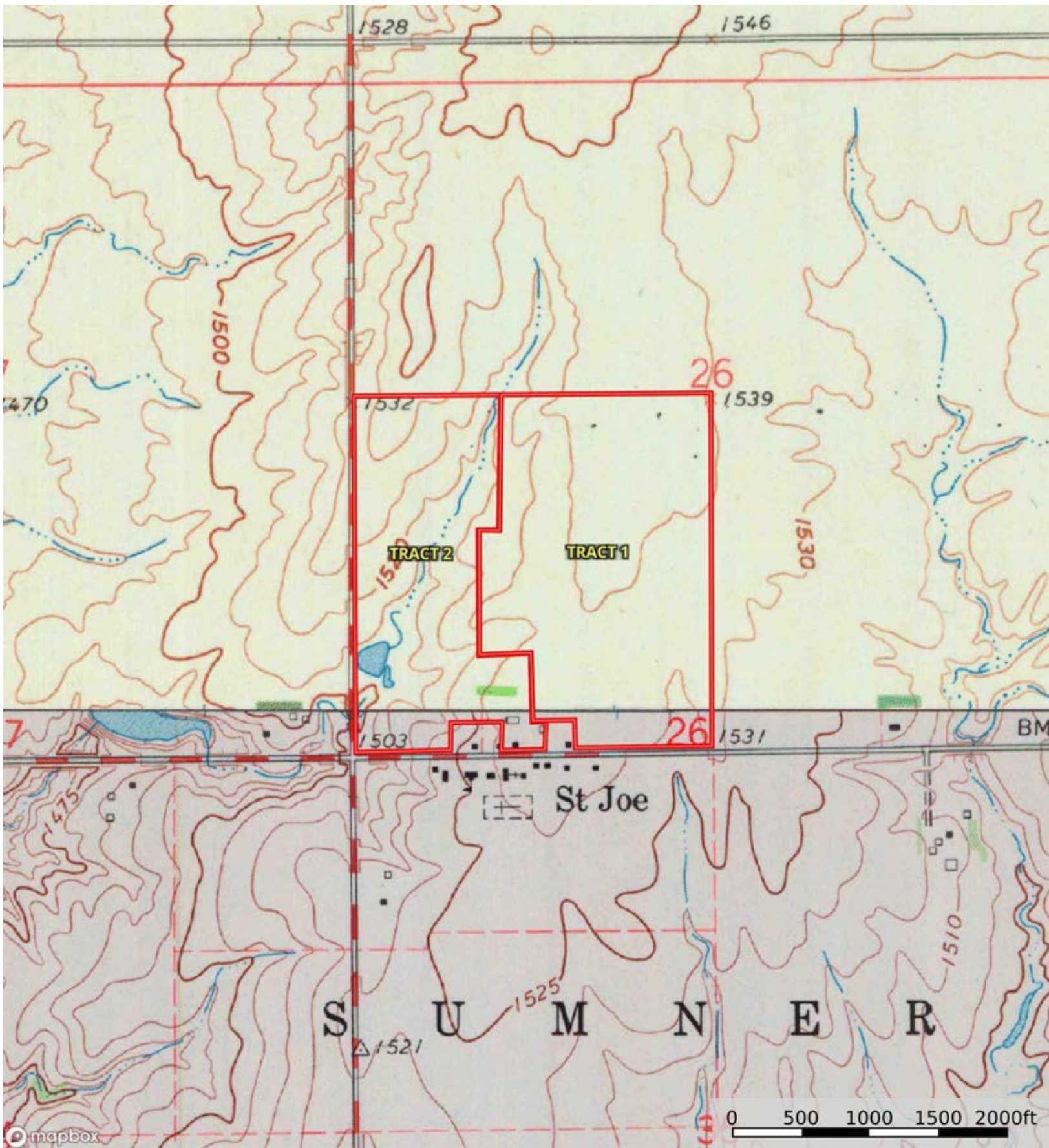
SOIL CODE	SOIL DESCRIPTION	ACRES	%	CPI	NCCPI	CAP
5924	Ost-Clark loams, 1 to 3 percent slopes	17.6	28.2	0	69	2e
5880	Clark-Ost loams, 3 to 7 percent slopes	17.36	27.81	0	65	3e
5960	Shellabarger-Nalim complex, 1 to 3 percent slopes	12.04	19.29	0	57	2e
6348	Jamash-Piedmont clay loams, 1 to 3 percent slopes	10.15	16.26	0	27	4s
5926	Penalosa silt loam, 1 to 3 percent slopes	5.28	8.46	0	59	2s
TOTALS		62.43(*)	100%	-	57.91	2.6

(*) Total acres may differ in the second decimal compared to the sum of each acreage soil. This is due to a round error because we only show the acres of each soil with two decimal.



L-2300555

Reno County, Kansas, 151.45 AC +/-



Boundary