



Farmers  
National  
Company™

www.FarmersNational.com

L-2300567

SCAN THE QR CODE  
FOR MORE INFO!



# LAND AUCTION

**SIMULCAST LIVE AND ONLINE**

**80± Acres, Humboldt County, Iowa**

**Thursday, November 16, 2023 | 10:00 AM**

**Bode Community Center | 105 Humboldt Avenue, Bode, Iowa**

## Highlights:

- High quality cropland with a CSR2 of 79.3
- Full possession available for the 2024 growing season
- Property includes a building site with grain bins and machine sheds



**For additional information, please contact:**

**Thad Naeve, Agent | (515) 368-0773**

**TNaeve@FarmersNational.com**

# Bidding starts | Tuesday November 14, 2023 at 10:00 AM

# Bidding closes | Thursday, November 16, 2023 at 10:00 AM

To register and bid go to: [www.fnctbid.com](http://www.fnctbid.com)

## Property Information

**Directions to Property:** Three miles west of Bode on C18, then south on Florida Avenue two miles. Property is on the east side of Florida Avenue.

**Legal Description:** A parcel to be surveyed in the Northwest Quarter (NW1/4) of Section 36, Township 93 North, Range 30 West of the 5th P.M., Humboldt County, Iowa containing 80± acres

**Property Description:** 80± acres of highly productive cropland and a building site located five miles southwest of Bode, Iowa.

**Improvements:** A 30' x 20' grain drying bin built in 1979, a 18' x 16' grain storage bin, and two machine sheds.

**CRP:** 4.30 acres under contract expiring September 30, 2029. Annual payment of \$216.

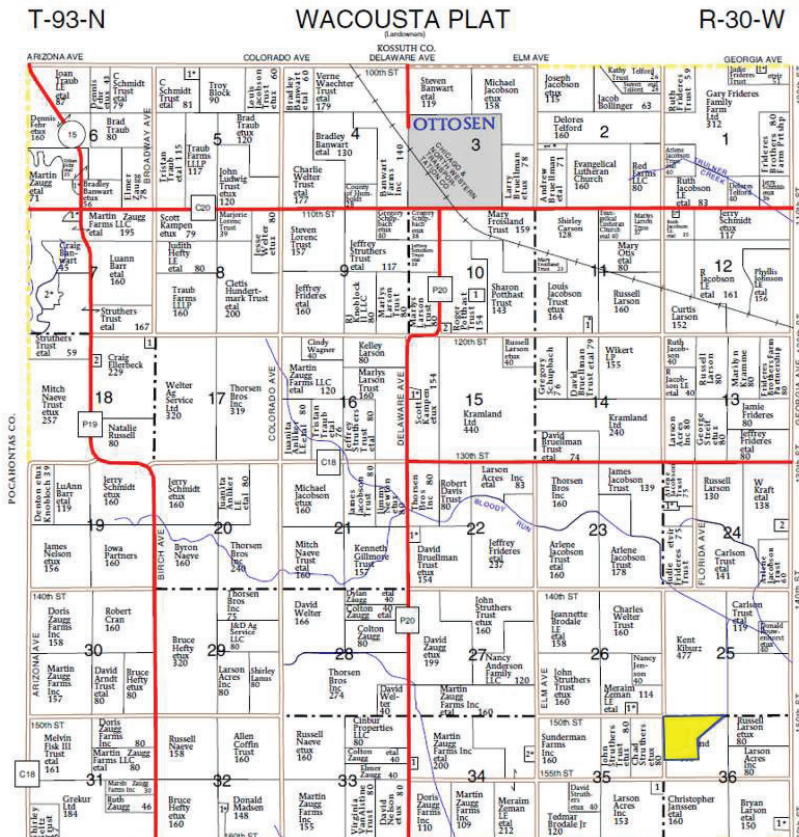
### Farm Data:

Cropland	70.31 acres (estimated)
Non-crop	2.11 acres
CRP	4.30 acres
Timber	.47 acres
Buildings	2.81 acres
<b>Total</b>	<b>80.00 acres</b>

### FSA Information:

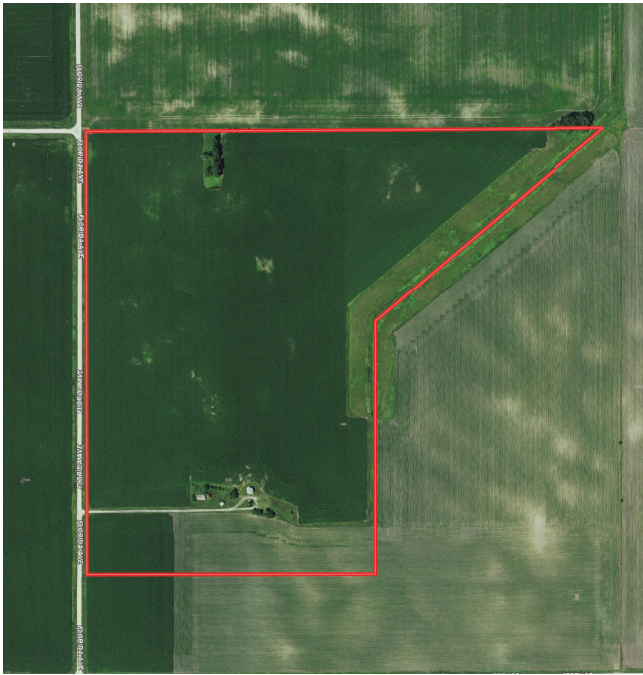
	<b>Base</b>	<b>Yield</b>
Corn	39.00 acres	162 bushels
Soybeans	31.15 acres	45 bushels

**2022 Taxes:** \$2,198 (estimated)





**Aerial Map**



**Soils Map**



SOIL CODE	SOIL DESCRIPTION	ACRES	%	CSR2	CPI	NCCPI	CAP
507	Canisteo clay loam, 0 to 2 percent slopes	40.68	50.96	84.0	0	82	2w
138B	Clarion loam, 2 to 6 percent slopes	16.95	21.23	89.0	0	83	2e
835D2	Omsrud-Storden complex, 10 to 16 percent slopes, moderately eroded	11.68	14.63	53.0	0	65	4e
638C2	Clarion-Storden complex, 6 to 10 percent slopes, moderately eroded	8.37	10.48	75.0	0	68	3e
90	Okoboji mucky silty clay loam, depressional, 0 to 1 percent slopes	2.16	2.71	56.0	0	70	3w
TOTALS		79.84(*)	100%	78.84	-	77.94	2.42



# Simulcast Auction Terms

**Minerals:** All mineral interests owned by the Sellers, if any, will be conveyed to the Buyer(s).

**Taxes:** Real estate taxes will be prorated to closing.

**Conditions:** This sale is subject to all easements, covenants, restrictions of record, and leases. Each Bidder is responsible for conducting, at their own risk, their own inspections, inquiries, and due diligence concerning the property. All property is sold and transferred at closing on an "AS IS-WHERE IS" basis with no warranties or guarantees, either expressed or implied, by the Sellers or Farmers National Company.

**Possession:** Possession will be granted at closing on December 15, 2023, or such other date agreed to by the parties.

**Earnest Payment:** A 10% earnest money payment is required on the day of the bidding. The payment may be in the form of cashier's check, personal check, company check, or wired funds. All funds will be deposited and held by Roberts & Eddy Law Firm, the closing agent.

**Contract and Title:** Immediately upon conclusion of the bidding, the high bidder(s) will enter into a real estate contract and deposit with Roberts & Eddy Law Firm, the closing agent, the required earnest payment. The Seller will provide a current abstract of title at their expense. Sale is not contingent upon Buyer(s) financing.

**Closing:** The sale closing is on December 15, 2023, or such other date agreed to by the parties. The balance of the purchase price will be payable at closing in guaranteed funds or by wire transfer at the discretion of Roberts & Eddy Law Firm.

**Sale Method:** The real estate will be offered in one tract. All bids are open for advancement until the Auctioneer announces that the real estate is sold or that the biddings is closed. Bidding increments are solely at the discretion of the Auctioneer. Absentee or telephone bids will be accepted with prior approval from Farmers National Company and Seller. All decisions of the Auctioneer are final.

**Approval of Bids:** Final sale is subject to the Seller's approval or rejection.

**Agency:** Farmers National Company and its representatives are acting as Agents of the Sellers.

**Announcements:** Information provided herein was obtained from sources deemed reliable, but neither

Farmers National Company nor the Sellers makes any guarantees or warranties as to its accuracy. All potential bidders are urged to inspect the property, its condition, and to rely on their own conclusions. All sketches, dimensions, and acreage figures are approximate or "more or less". Any announcements made auction day by the Farmers National Company will take precedence over any previous printed materials or oral statements. Farmers National Company and Sellers reserve the right to preclude any person from bidding if there is any question as to the person's credentials or fitness to bid.

**Sellers:** Dianna L. Helland Estate

**Auctioneer:** Joel Ambrose

**Online Bidding Procedure:** This online auction begins on Tuesday, November 14, 2023, at 10:00 AM. Bidding closes on Thursday, November 16, 2023, at 10:00 AM.

To register and bid on this auction go to: [www.FNCBid.com](http://www.FNCBid.com)

All bids on the tract will be visible online, but the identity of bidders is confidential. See auction terms and conditions for minimum bid requirements and details.

**Server and Software Technical Issues:** In the event there are technical difficulties related to the server, software, or any other online auction-related technologies, Farmers National Company reserves the right to extend bidding, continue the bidding, or close the bidding. Neither the company providing the software nor Farmers National Company shall be held responsible for a missed bid or the failure of the software to function properly for any reason.

## Property Location Map

