

L-2300573

Dodge County, Nebraska, 73.2 AC +/-



Boundary

L-2300573

Dodge County, Nebraska, 73.2 AC +/-




 Boundary



The information contained herein was obtained from sources deemed to be reliable. Land id™ Services makes no warranties or guarantees as to the completeness or accuracy thereof.



 Boundary

|  Boundary 72.22 ac

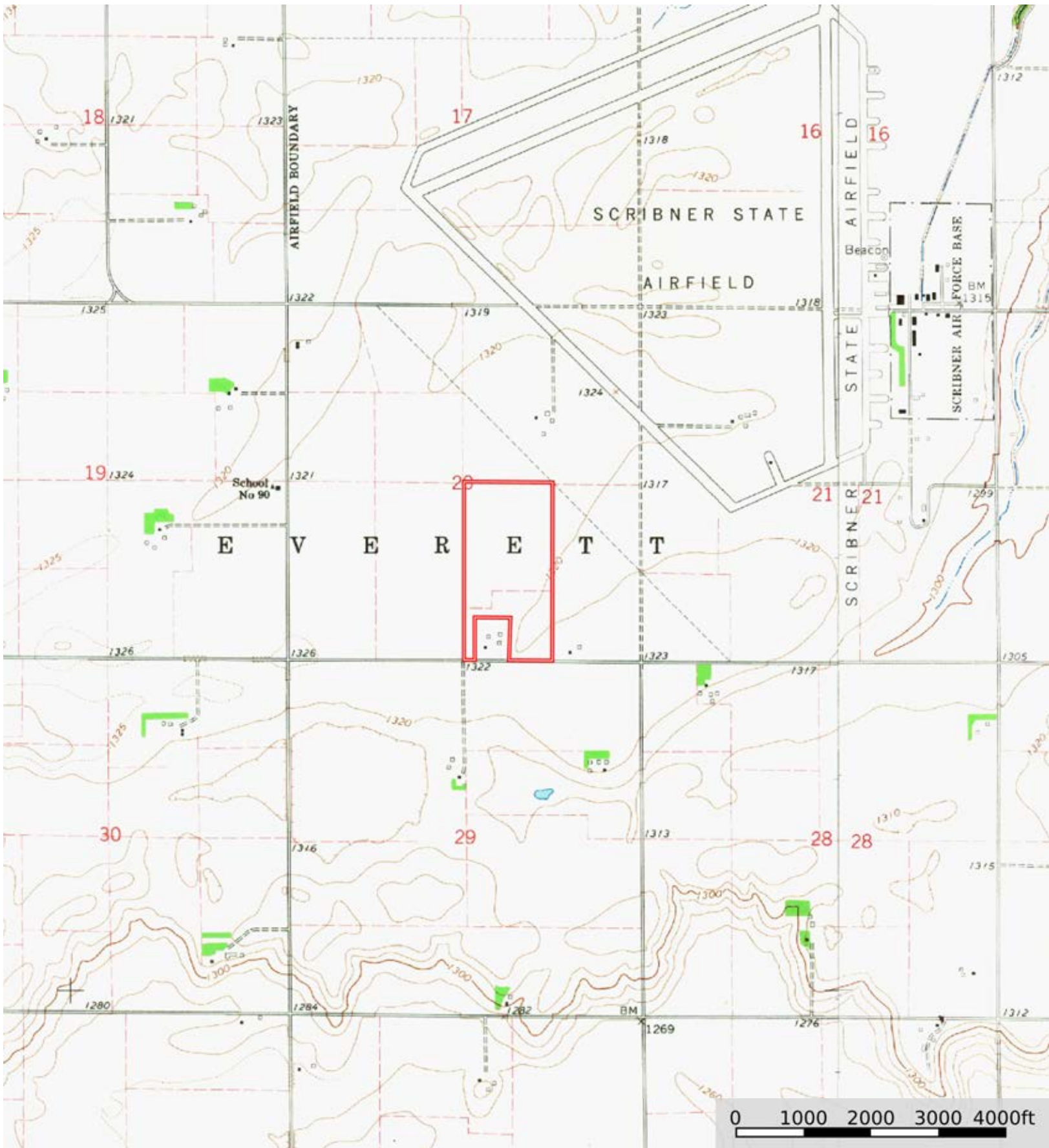
SOIL CODE	SOIL DESCRIPTION	ACRES	%	CPI	NCCPI	CAP
6545	Moody silty clay loam, terrace, 0 to 2 percent slopes	72.22	100	0	71	2e
TOTALS		72.22(*)	100%	-	71.0	2


(*) Total acres may differ in the second decimal compared to the sum of each acreage soil. This is due to a round error because we only show the acres of each soil with two decimal.



L-2300573

Dodge County, Nebraska, 73.2 AC +/-



 Boundary



The information contained herein was obtained from sources deemed to be reliable. Land id™ Services makes no warranties or guarantees as to the completeness or accuracy thereof.