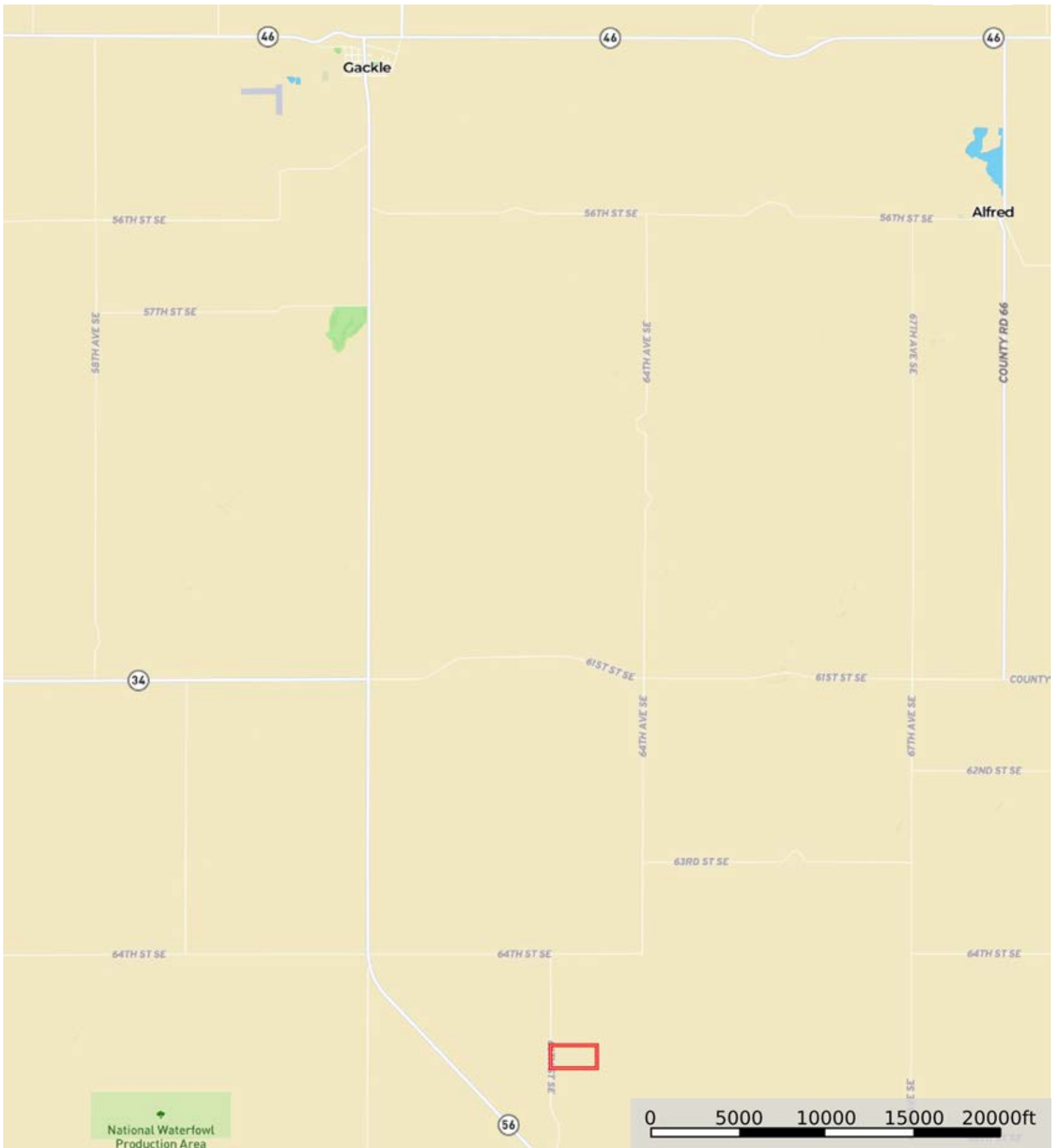



L-2300584

Logan County, North Dakota, 79.44 AC +/-



 Boundary




The information contained herein was obtained from sources deemed to be reliable. Land id™ Services makes no warranties or guarantees as to the completeness or accuracy thereof.

L-2300584

Logan County, North Dakota, 79.44 AC +/-



 Boundary




The information contained herein was obtained from sources deemed to be reliable. Land id™ Services makes no warranties or guarantees as to the completeness or accuracy thereof.



L-2300584

Logan County, North Dakota, 79.44 AC +/-



 Boundary

|  Boundary 80.54 ac

SOIL CODE	SOIL DESCRIPTION	ACRES	%	CPI	NCCPI	CAP
C135C	Zahl-Williams-Zahill complex, 6 to 9 percent slopes	34.88	43.31	57	49	4e
C135D	Zahl-Williams loams, 9 to 15 percent slopes	25.97	32.24	44	47	6e
C132B	Williams-Zahl loams, 3 to 6 percent slopes	19.69	24.45	77	52	2e
TOTALS		80.54(*)	100%	57.7	49.09	4.16

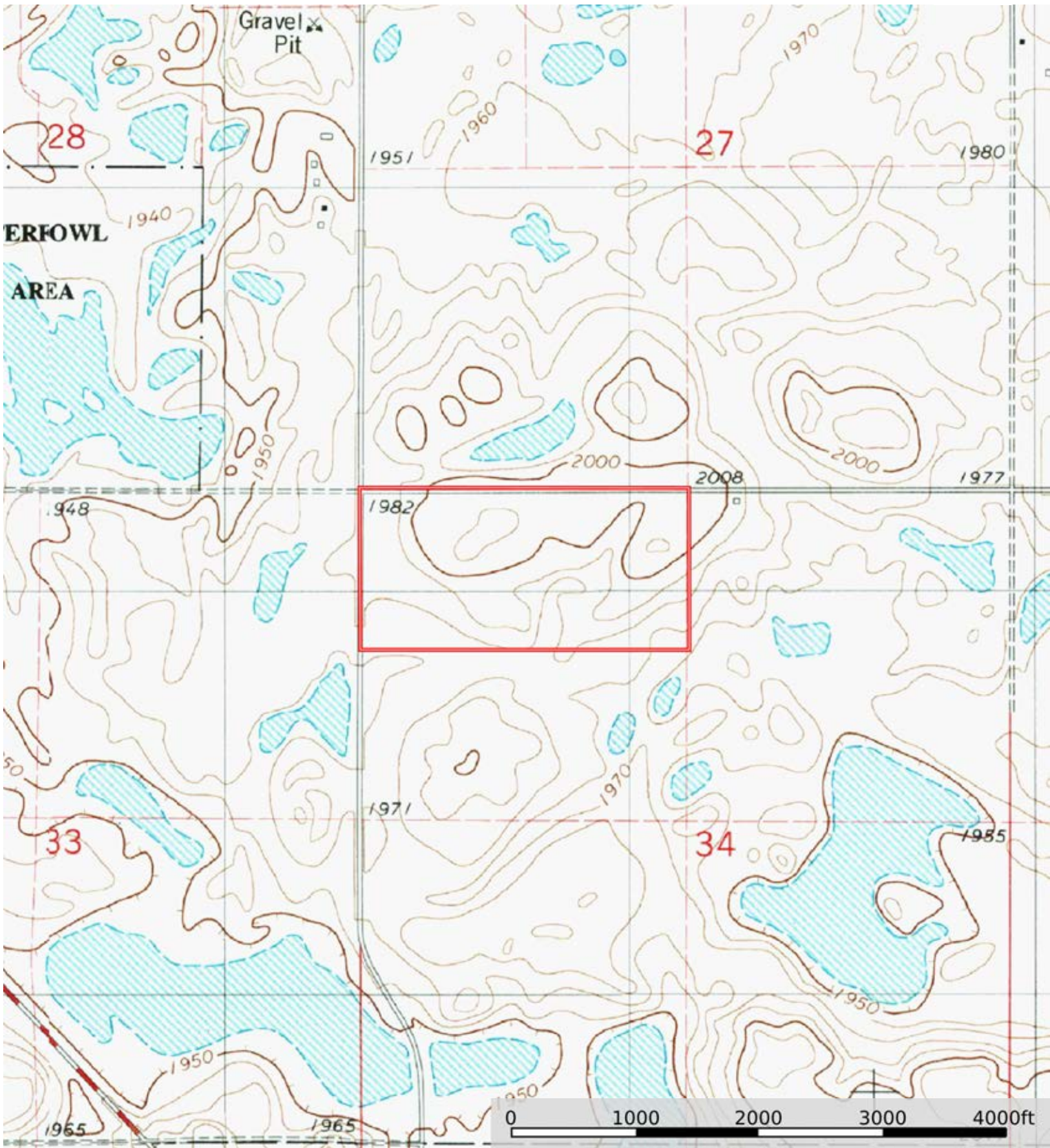
(\*) Total acres may differ in the second decimal compared to the sum of each acreage soil. This is due to a round error because we only show the acres of each soil with two decimal.






L-2300584

Logan County, North Dakota, 79.44 AC +/-



 Boundary