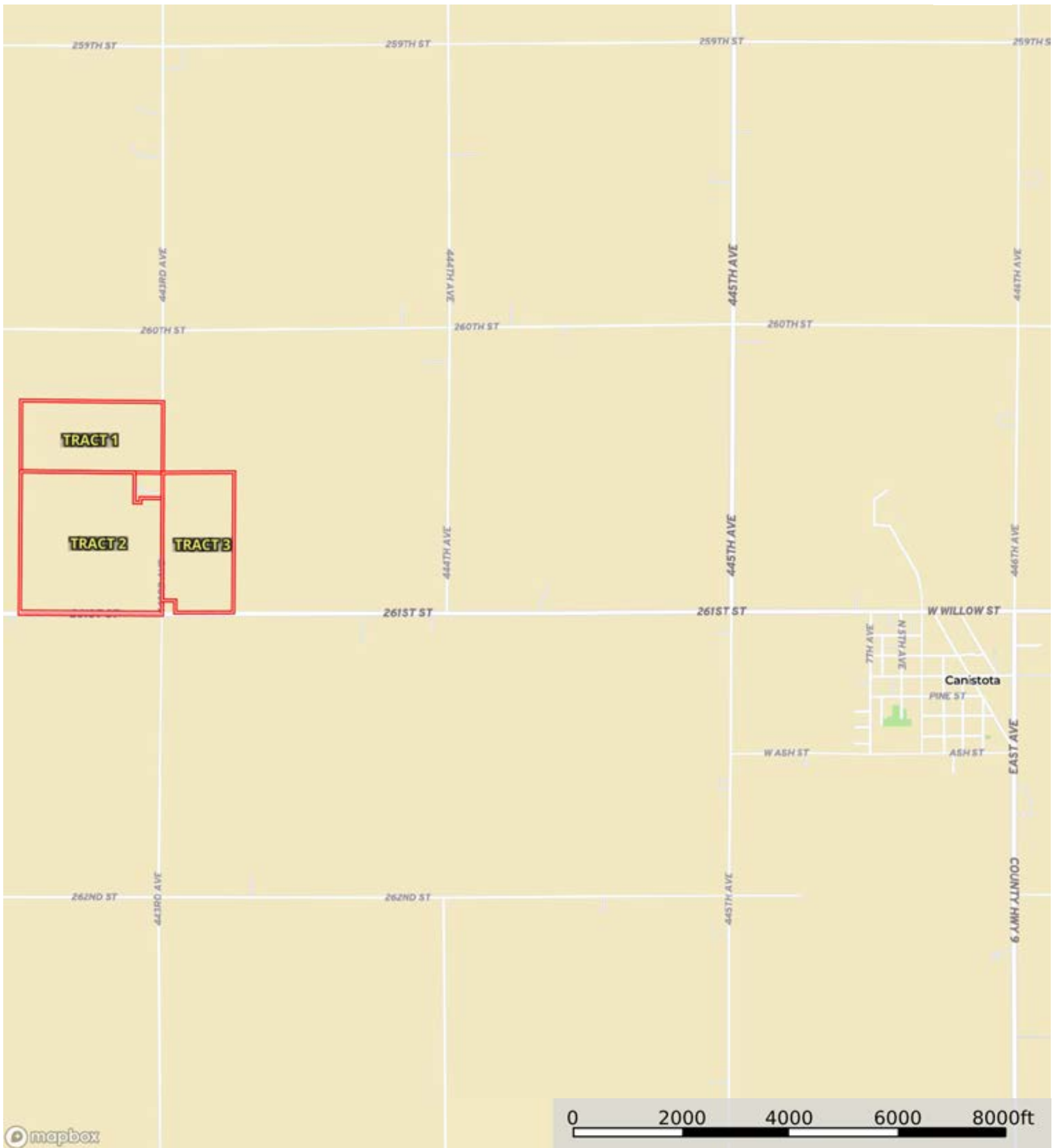



L-2400011

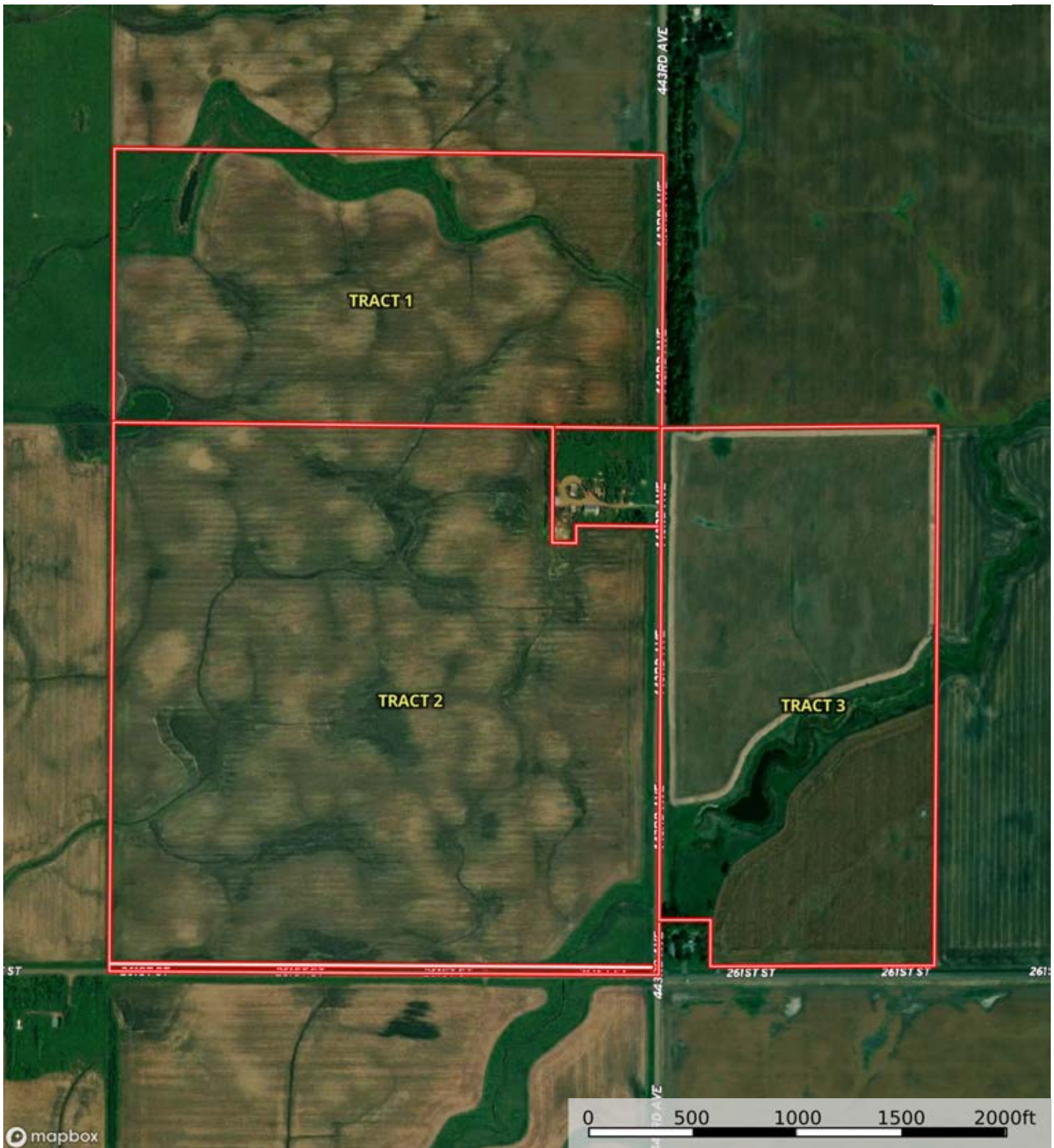
McCook County, South Dakota, 311.96 AC +/-




 Boundary

L-2400011

McCook County, South Dakota, 311.96 AC +/-




 Boundary

L-2400011

McCook County, South Dakota, 311.96 AC +/-



 Boundary

|  Boundary 79.51 ac

SOIL CODE	SOIL DESCRIPTION	ACRES	%	CPI	NCCPI	CAP
ChB	Clarno-Ethan-Bonilla loams, 1 to 6 percent slopes	40.86	51.4	79	66	2e
EcD	Ethan-Betts loams, 9 to 15 percent slopes	9.44	11.87	31	57	6e
EbC	Clarno-Ethan-Bonilla loams, 2 to 9 percent slopes	8.29	10.43	69	64	3e
Co	Clarno-Crossplain complex, 0 to 2 percent slopes	5.31	6.68	83	54	2c
CcB	Clarno loam, 2 to 6 percent slopes	4.62	5.81	82	66	2e
CfA	Clarno-Crossplain-Davison complex, 0 to 2 percent slopes	4.48	5.64	83	57	2c
Ck	Crossplain clay loam	3.38	4.25	78	33	2w
Tb	Tetonka silt loam, 0 to 1 percent slopes	1.81	2.28	57	17	4w
W	Water	1.3	1.64	0	-	8
CdA	Clarno-Bonilla loams, 0 to 2 percent slopes	0.02	0.03	88	68	2c
TOTALS		79.51(*)	100%	71.1	59.83	2.72

(*) Total acres may differ in the second decimal compared to the sum of each acreage soil. This is due to a round error because we only show the acres of each soil with two decimal.



L-2400011

McCook County, South Dakota, 311.96 AC +/-



Boundary

|  Boundary 152.87 ac

SOIL CODE	SOIL DESCRIPTION	ACRES	%	CPI	NCCPI	CAP
CcB	Clarno loam, 2 to 6 percent slopes	46.94	30.71	82	66	2e
ChB	Clarno-Ethan-Bonilla loams, 1 to 6 percent slopes	40.98	26.81	79	66	2e
CdA	Clarno-Bonilla loams, 0 to 2 percent slopes	31.95	20.9	88	68	2c
Co	Clarno-Crossplain complex, 0 to 2 percent slopes	11.69	7.65	83	54	2c
Tb	Tetonka silt loam, 0 to 1 percent slopes	6.28	4.11	57	17	4w
Ck	Crossplain clay loam	4.6	3.01	78	33	2w
EcD	Ethan-Betts loams, 9 to 15 percent slopes	4.03	2.64	31	57	6e
CfA	Clarno-Crossplain-Davison complex, 0 to 2 percent slopes	3.34	2.18	83	57	2c
Wo	Worthing silty clay loam, 0 to 1 percent slopes	3.06	2.0	31	10	5w
TOTALS		152.87(*)	100%	79.04	60.94	2.25

(*) Total acres may differ in the second decimal compared to the sum of each acreage soil. This is due to a round error because we only show the acres of each soil with two decimal.



L-2400011

McCook County, South Dakota, 311.96 AC +/-



Boundary

|  Boundary 77.46 ac

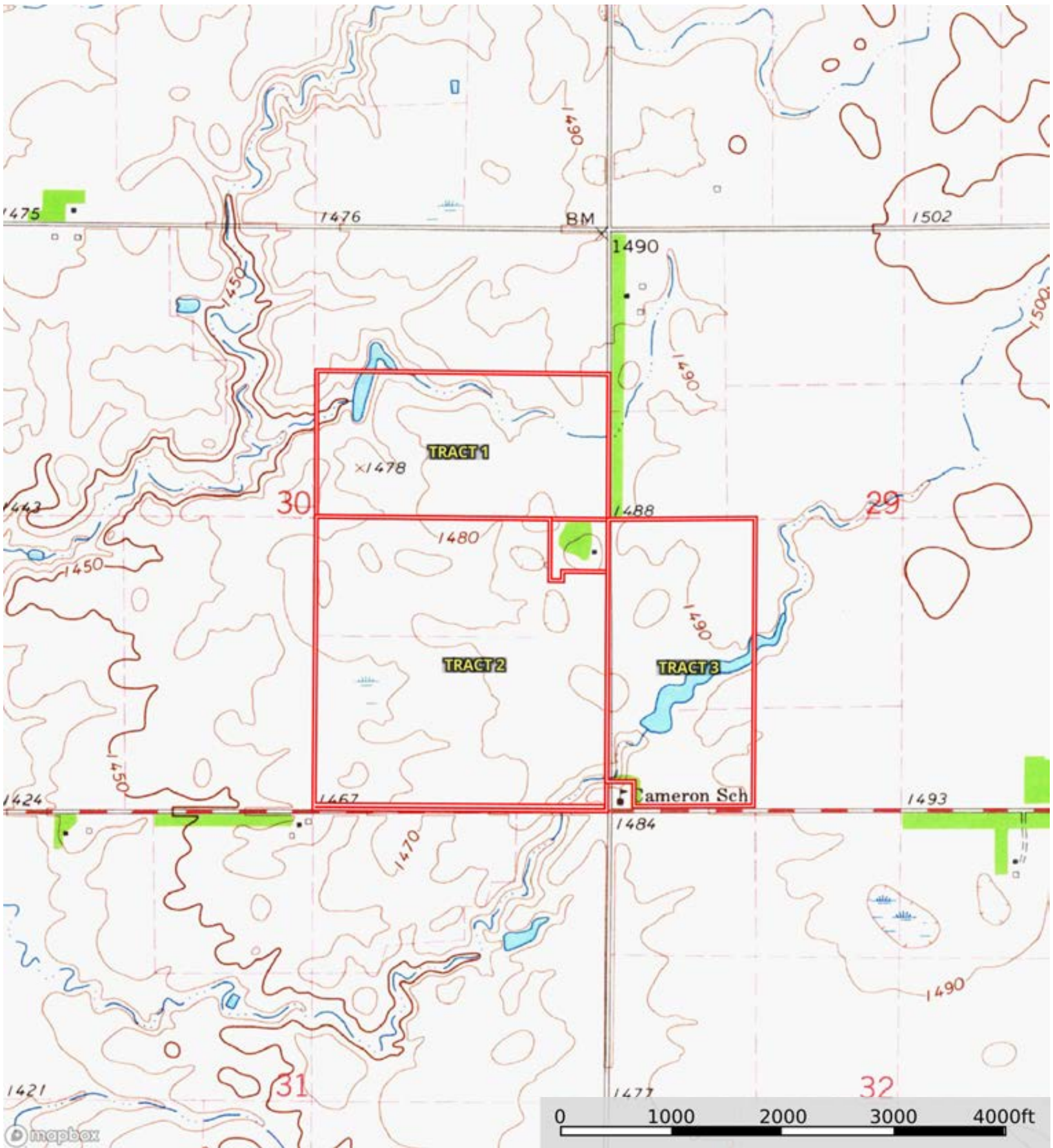
SOIL CODE	SOIL DESCRIPTION	ACRES	%	CPI	NCCPI	CAP
Co	Clarno-Crossplain complex, 0 to 2 percent slopes	22.24	28.7	83	54	2c
CfA	Clarno-Crossplain-Davison complex, 0 to 2 percent slopes	17.53	22.63	83	57	2c
EcD	Ethan-Betts loams, 9 to 15 percent slopes	10.32	13.32	31	57	6e
Ck	Crossplain clay loam	9.28	11.98	78	33	2w
CdA	Clarno-Bonilla loams, 0 to 2 percent slopes	7.6	9.81	88	68	2c
CeB	Clarno-Davison loams, 2 to 5 percent slopes	7.37	9.51	70	51	2e
W	Water	3.12	4.03	0	-	8
TOTALS		77.46(*)	100%	71.37	51.46	2.77


(*) Total acres may differ in the second decimal compared to the sum of each acreage soil. This is due to a round error because we only show the acres of each soil with two decimal.



L-2400011

McCook County, South Dakota, 311.96 AC +/-



 Boundary