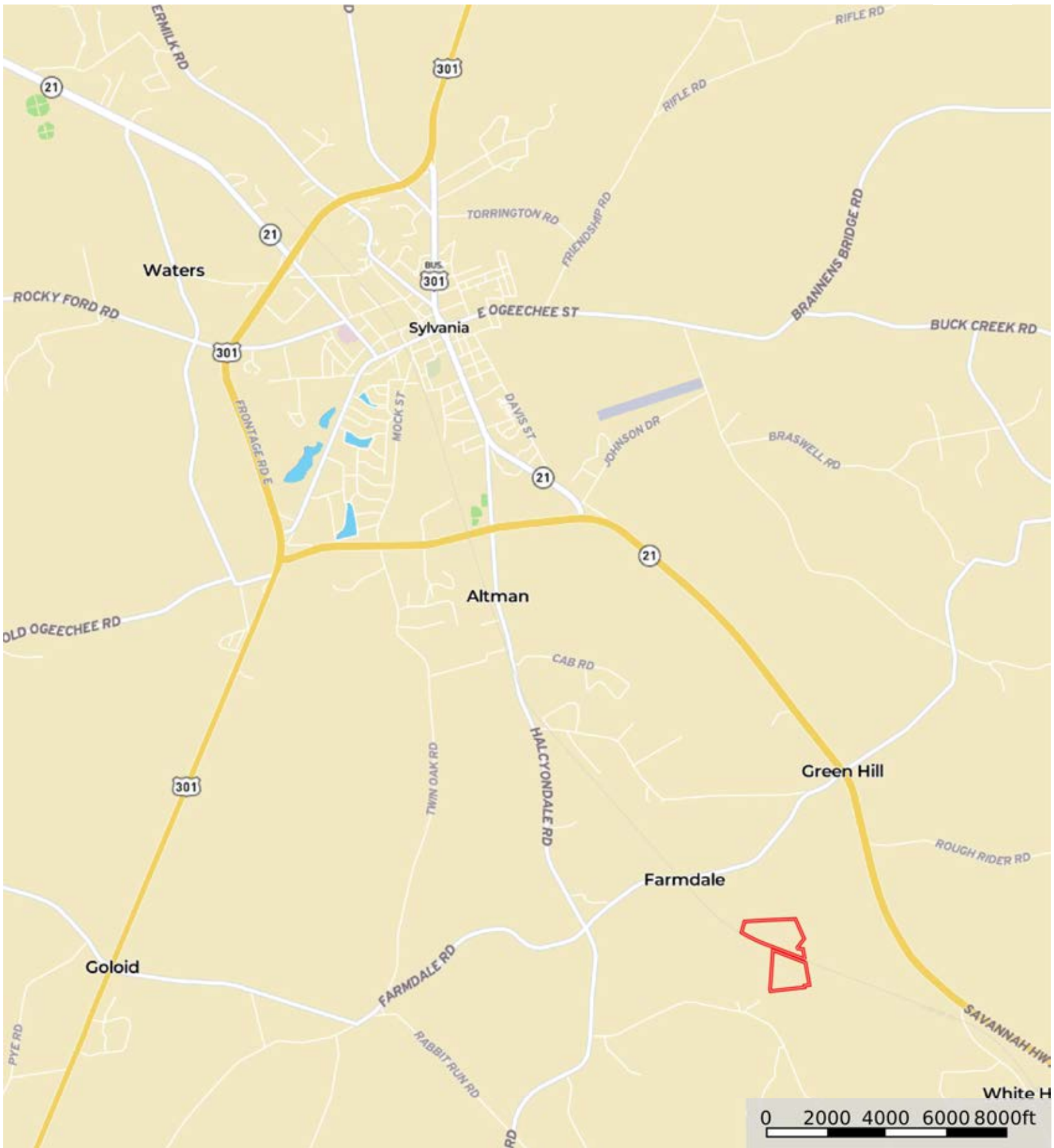



L-2400013

Screven County, Georgia, 67.4 AC +/-

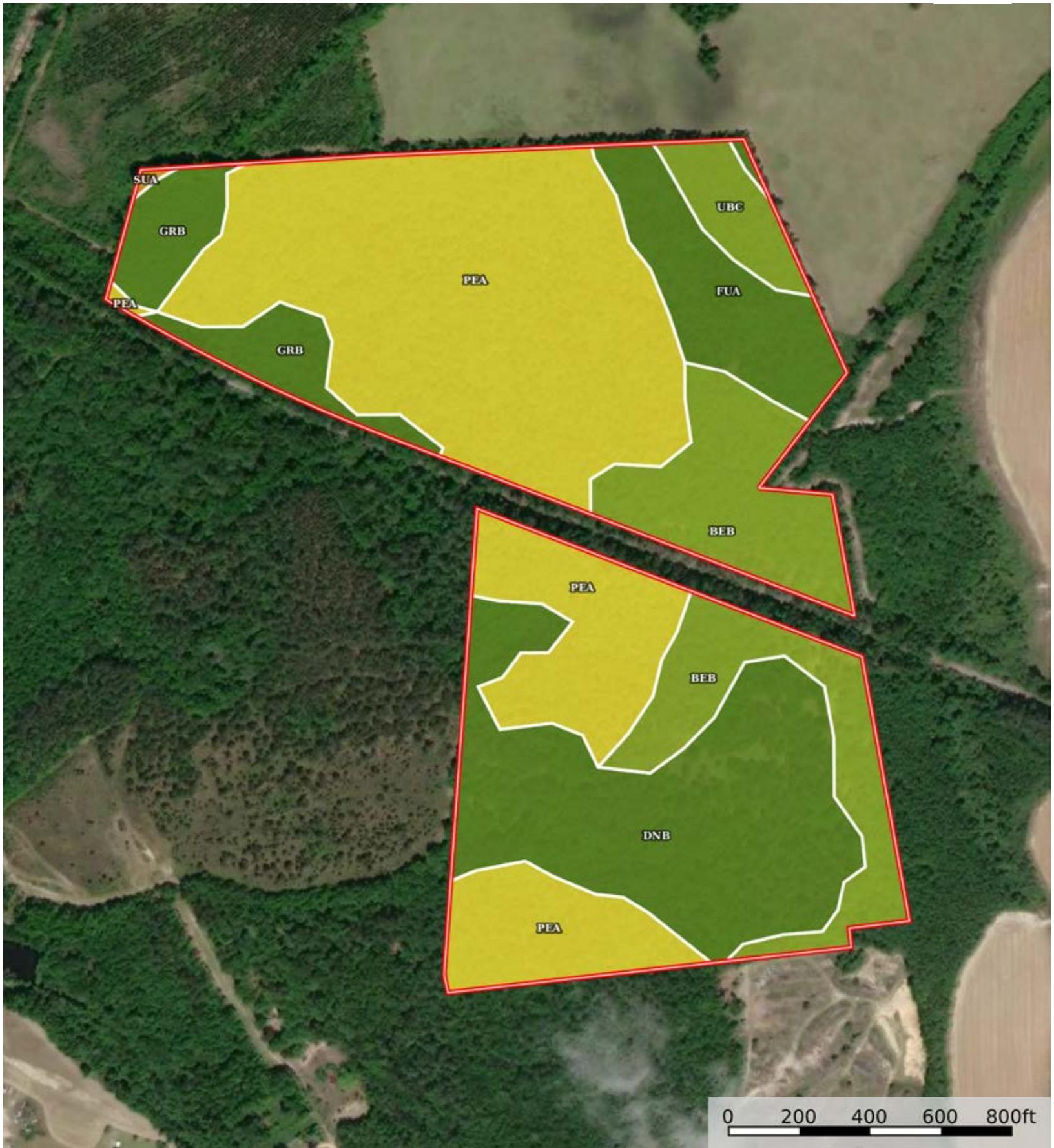



 Boundary



0 200 400 600 800ft

 Boundary



 Boundary

|  All Polygons 69.32 ac

SOIL CODE	SOIL DESCRIPTION	ACRES	%	CPI	NCCPI	CAP
PeA	Pelham loamy sand, 0 to 2 percent slopes	31.79	45.85	0	37	5w
DnB	Dothan-Norfolk complex, 2 to 5 percent slopes	14.81	21.36	0	62	2e
BeB	Blanton sand, 0 to 5 percent slopes	11.38	16.41	0	30	3s
FuA	Fuquay loamy sand, 0 to 2 percent slopes	5.09	7.34	0	46	2s
GrB	Gritney loamy sand, 2 to 5 percent slopes	4.17	6.01	0	72	2e
UbC	Uchee-Blanton complex, 5 to 8 percent slopes	1.99	2.87	0	35	3s
SuA	Surrency mucky sand, 0 to 1 percent slopes, frequently flooded	0.09	0.13	0	22	6w
TOTALS		69.32(*)	100%	-	43.87	3.57

(*) Total acres may differ in the second decimal compared to the sum of each acreage soil. This is due to a round error because we only show the acres of each soil with two decimal.

|  Boundary 39.33 ac

SOIL CODE	SOIL DESCRIPTION	ACRES	%	CPI	NCCPI	CAP
PeA	Pelham loamy sand, 0 to 2 percent slopes	22.17	56.35	0	37	5w
BeB	Blanton sand, 0 to 5 percent slopes	5.82	14.79	0	30	3s
FuA	Fuquay loamy sand, 0 to 2 percent slopes	5.09	12.94	0	46	2s
GrB	Gritney loamy sand, 2 to 5 percent slopes	4.17	10.6	0	72	2e
UbC	Uchee-Blanton complex, 5 to 8 percent slopes	1.99	5.06	0	35	3s
SuA	Surrency mucky sand, 0 to 1 percent slopes, frequently flooded	0.09	0.23	0	22	6w
TOTALS		39.33(*)	100%	-	40.69	3.9

(*) Total acres may differ in the second decimal compared to the sum of each acreage soil. This is due to a round error because we only show the acres of each soil with two decimal.

|  Boundary 29.99 ac

SOIL CODE	SOIL DESCRIPTION	ACRES	%	CPI	NCCPI	CAP
DnB	Dothan-Norfolk complex, 2 to 5 percent slopes	14.81	49.37	0	62	2e
PeA	Pelham loamy sand, 0 to 2 percent slopes	9.62	32.07	0	37	5w
BeB	Blanton sand, 0 to 5 percent slopes	5.56	18.53	0	30	3s
TOTALS		29.99(*)	100%	-	48.03	3.15









(*) Total acres may differ in the second decimal compared to the sum of each acreage soil. This is due to a round error because we only show the acres of each soil with two decimal.

Capability Legend

Increased Limitations and Hazards

Decreased Adaptability and Freedom of Choice Users

Land, Capability

								
	1	2	3	4	5	6	7	8
'Wild Life'	•	•	•	•	•	•	•	•
Forestry	•	•	•	•	•	•	•	
Limited	•	•	•	•	•	•	•	
Moderate	•	•	•	•	•	•		
Intense	•	•	•	•	•			
Limited	•	•	•	•				
Moderate	•	•	•					
Intense	•	•						
Very Intense	•							

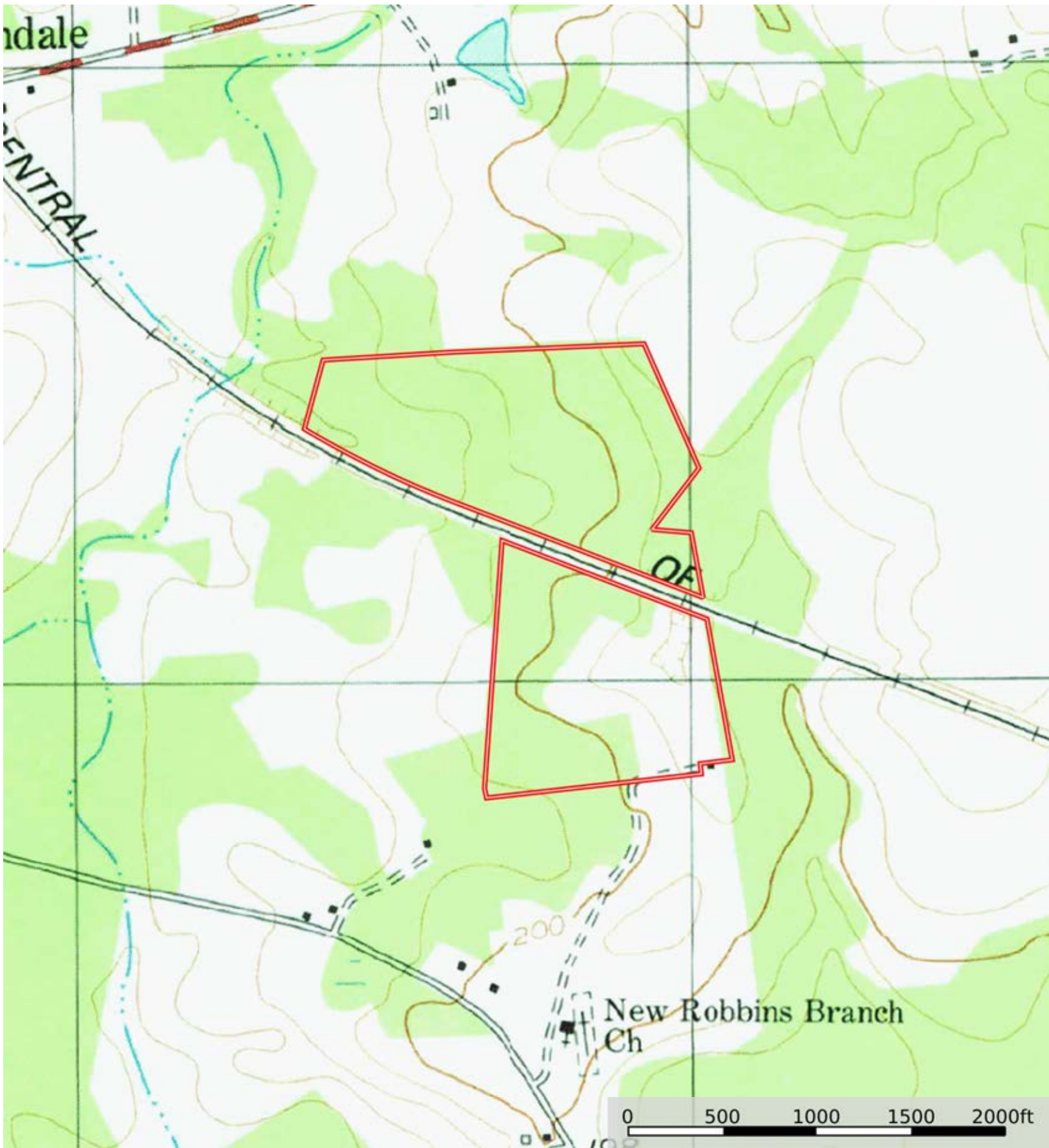
Grazing Cultivation


(c) climatic limitations (e) susceptibility to erosion

(s) soil limitations within the rooting zone (w) excess of water

L-2400013

Screven County, Georgia, 67.4 AC +/-



 Boundary