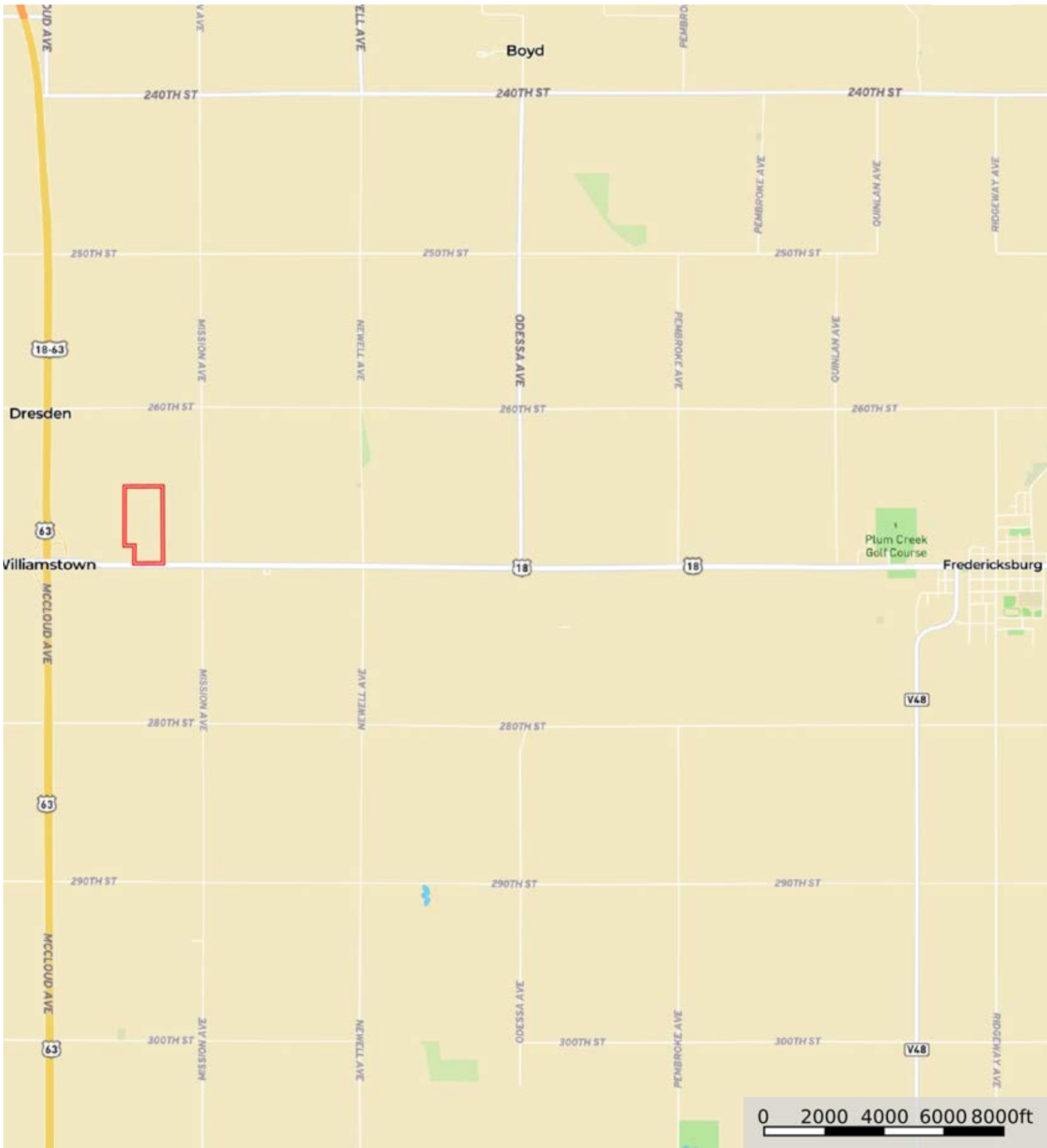



L-2400017

Chickasaw County, Iowa, 70.69 AC +/-



 Boundary




 Boundary

L-2400017

Chickasaw County, Iowa, 70.69 AC +/-



 Boundary



The information contained herein was obtained from sources deemed to be reliable. Land id™ Services makes no warranties or guarantees as to the completeness or accuracy thereof.

|  Boundary 71.08 ac

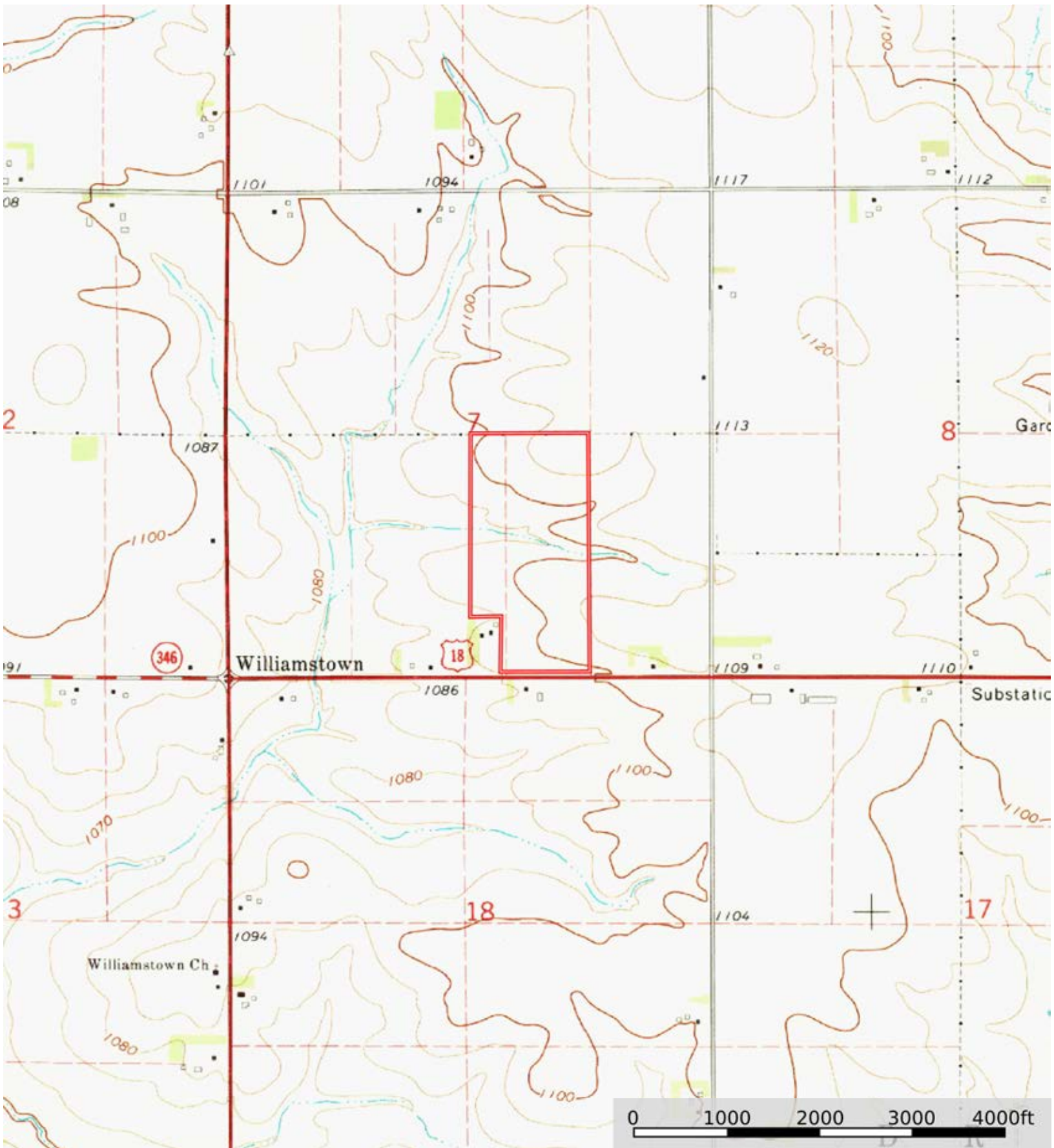
SOIL CODE	SOIL DESCRIPTION	ACRES	%	CSR2	CPI	NCCPI	CAP
391B	Clyde-Floyd complex, 1 to 4 percent slopes	25.34	35.66	87.0	0	89	2w
399	Readlyn silt loam, 1 to 3 percent slopes	20.99	29.54	91.0	0	79	1
83B	Kenyon loam, 2 to 5 percent slopes	16.5	23.22	90.0	0	87	2e
398	Tripoli clay loam, 0 to 2 percent slopes	5.82	8.19	82.0	0	66	2w
198B	Floyd loam, 1 to 4 percent slopes	2.12	2.98	89.0	0	88	2w
284B	Flagler sandy loam, 2 to 5 percent slopes	0.31	0.44	49.0	0	62	3e
TOTALS		71.08(*)	100%	88.39	-	83.58	1.71


(\*) Total acres may differ in the second decimal compared to the sum of each acreage soil. This is due to a round error because we only show the acres of each soil with two decimal.



L-2400017

Chickasaw County, Iowa, 70.69 AC +/-



 Boundary



The information contained herein was obtained from sources deemed to be reliable. Land id™ Services makes no warranties or guarantees as to the completeness or accuracy thereof.