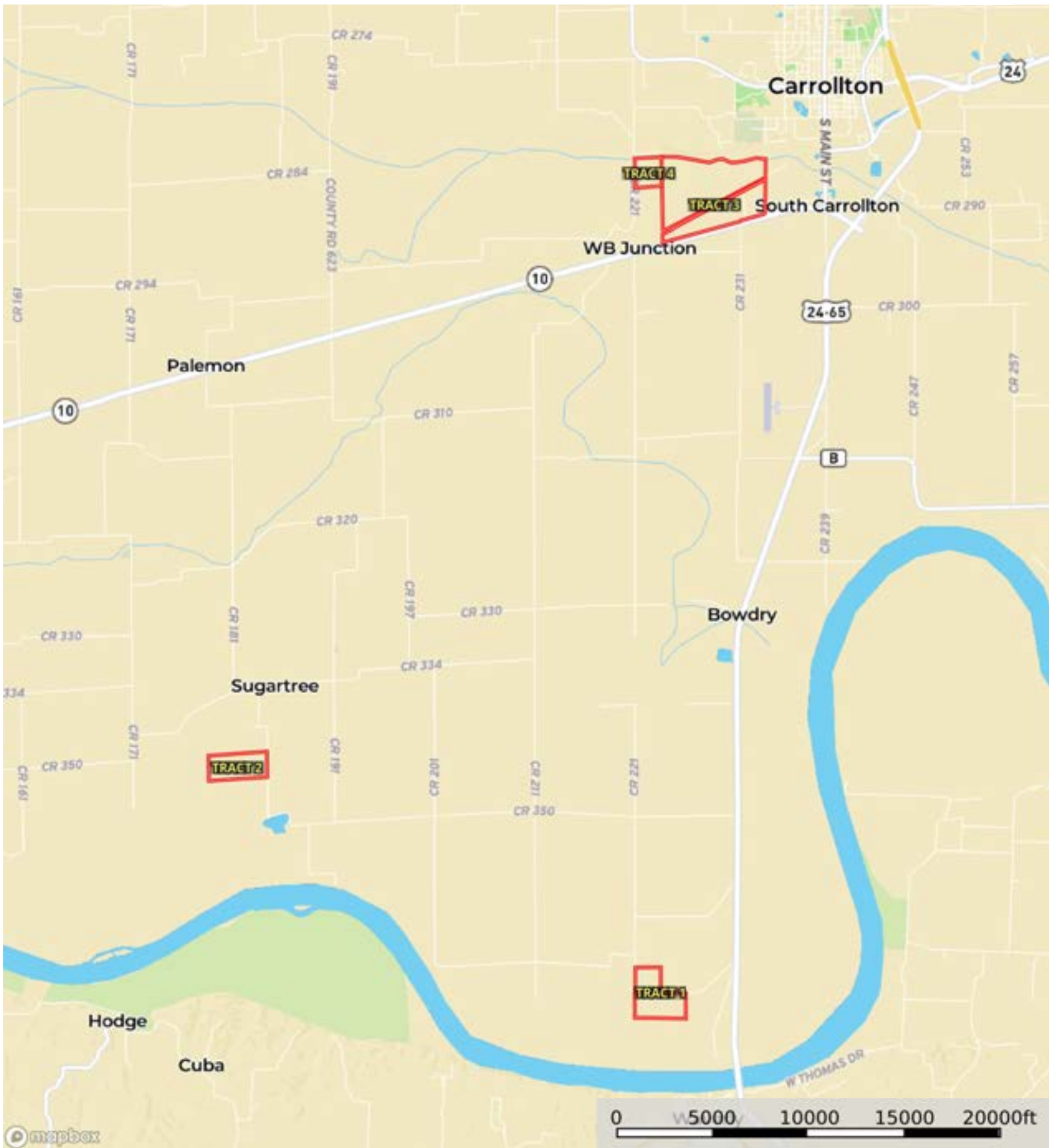



L-2400019

Carroll County, Missouri, 692 AC +/-




 Boundary

L-2400019

Carroll County, Missouri, 692 AC +/-



 Boundary

L-2400019

Carroll County, Missouri, 692 AC +/-



Boundary



The information contained herein was obtained from sources deemed to be reliable. Land id™ Services makes no warranties or guarantees as to the completeness or accuracy thereof.

|  All Polygons 120.33 ac

SOIL CODE	SOIL DESCRIPTION	ACRES	%	CPI	NCCPI	CAP
13527	Haynie very fine sandy loam, 0 to 2 percent slopes, occasionally flooded	45.13	37.51	0	67	2w
13570	Parkville silty clay loam, 0 to 2 percent slopes, occasionally flooded	28.52	23.7	0	65	2w
66007	Leta silty clay, 0 to 2 percent slopes, occasionally flooded	23.76	19.75	0	59	2w
66035	Hodge loamy fine sand, 0 to 2 percent slopes, occasionally flooded	22.92	19.05	0	50	2w
TOTALS		120.33(*)	100%	-	61.71	2.0

(*) Total acres may differ in the second decimal compared to the sum of each acreage soil. This is due to a round error because we only show the acres of each soil with two decimal.

|  Boundary 40.31 ac

SOIL CODE	SOIL DESCRIPTION	ACRES	%	CPI	NCCPI	CAP
13527	Haynie very fine sandy loam, 0 to 2 percent slopes, occasionally flooded	21.89	54.3	0	67	2w
66035	Hodge loamy fine sand, 0 to 2 percent slopes, occasionally flooded	11.55	28.65	0	50	2w
66007	Leta silty clay, 0 to 2 percent slopes, occasionally flooded	6.87	17.04	0	59	2w
TOTALS		40.31(*)	100%	-	60.77	2.0

(*) Total acres may differ in the second decimal compared to the sum of each acreage soil. This is due to a round error because we only show the acres of each soil with two decimal.

|  Boundary 80.02 ac

SOIL CODE	SOIL DESCRIPTION	ACRES	%	CPI	NCCPI	CAP
13570	Parkville silty clay loam, 0 to 2 percent slopes, occasionally flooded	28.52	35.65	0	65	2w
13527	Haynie very fine sandy loam, 0 to 2 percent slopes, occasionally flooded	23.24	29.05	0	67	2w
66007	Leta silty clay, 0 to 2 percent slopes, occasionally flooded	16.89	21.11	0	59	2w
66035	Hodge loamy fine sand, 0 to 2 percent slopes, occasionally flooded	11.37	14.21	0	50	2w
TOTALS		80.02(*)	100%	-	62.19	2.0









(*) Total acres may differ in the second decimal compared to the sum of each acreage soil. This is due to a round error because we only show the acres of each soil with two decimal.

Capability Legend

Increased Limitations and Hazards

Decreased Adaptability and Freedom of Choice Users

Land, Capability

								
	1	2	3	4	5	6	7	8
'Wild Life'	•	•	•	•	•	•	•	•
Forestry	•	•	•	•	•	•	•	
Limited	•	•	•	•	•	•	•	
Moderate	•	•	•	•	•	•		
Intense	•	•	•	•	•			
Limited	•	•	•	•				
Moderate	•	•	•					
Intense	•	•						
Very Intense	•							

Grazing Cultivation

(c) climatic limitations (e) susceptibility to erosion

(s) soil limitations within the rooting zone (w) excess of water

L-2400019

Carroll County, Missouri, 692 AC +/-



Boundary

L-2400019

Carroll County, Missouri, 692 AC +/-



 Boundary

|  Boundary 92.99 ac

SOIL CODE	SOIL DESCRIPTION	ACRES	%	CPI	NCCPI	CAP
13512	Cotter silt loam, 0 to 2 percent slopes, rarely flooded	67.97	73.09	0	86	1
13507	Bremer silty clay loam, 0 to 2 percent slopes, rarely flooded	22.56	24.26	0	66	2w
66007	Leta silty clay, 0 to 2 percent slopes, occasionally flooded	1.73	1.86	0	59	2w
13516	Gilliam silt loam, 0 to 2 percent slopes, occasionally flooded	0.73	0.78	0	79	2w
TOTALS		92.99(*)	100%	-	80.58	1.27


(*) Total acres may differ in the second decimal compared to the sum of each acreage soil. This is due to a round error because we only show the acres of each soil with two decimal.



L-2400019

Carroll County, Missouri, 692 AC +/-



 Boundary



The information contained herein was obtained from sources deemed to be reliable. Land id™ Services makes no warranties or guarantees as to the completeness or accuracy thereof.

L-2400019

Carroll County, Missouri, 692 AC +/-



Boundary



The information contained herein was obtained from sources deemed to be reliable. Land id™ Services makes no warranties or guarantees as to the completeness or accuracy thereof.

|  All Polygons 433.54 ac

SOIL CODE	SOIL DESCRIPTION	ACRES	%	CPI	NCCPI	CAP
13507	Bremer silty clay loam, 0 to 2 percent slopes, rarely flooded	233.39	53.84	0	66	2w
13512	Cotter silt loam, 0 to 2 percent slopes, rarely flooded	127.58	29.43	0	86	1
36031	Nodaway silt loam, 0 to 2 percent slopes, frequently flooded	39.74	9.17	0	63	3w
13565	Norborne loam, 0 to 2 percent slopes, occasionally flooded	32.83	7.57	0	88	2w
TOTALS		433.54(*)	100%	-	73.28	1.8

(*) Total acres may differ in the second decimal compared to the sum of each acreage soil. This is due to a round error because we only show the acres of each soil with two decimal.

|  Boundary 292.69 ac

SOIL CODE	SOIL DESCRIPTION	ACRES	%	CPI	NCCPI	CAP
13512	Cotter silt loam, 0 to 2 percent slopes, rarely flooded	110.22	37.66	0	86	1
13507	Bremer silty clay loam, 0 to 2 percent slopes, rarely flooded	109.9	37.55	0	66	2w
36031	Nodaway silt loam, 0 to 2 percent slopes, frequently flooded	39.74	13.58	0	63	3w
13565	Norborne loam, 0 to 2 percent slopes, occasionally flooded	32.83	11.22	0	88	2w
TOTALS		292.69(*)	100%	-	75.59	1.76

(*) Total acres may differ in the second decimal compared to the sum of each acreage soil. This is due to a round error because we only show the acres of each soil with two decimal.

|  Boundary 140.85 ac

SOIL CODE	SOIL DESCRIPTION	ACRES	%	CPI	NCCPI	CAP
13507	Bremer silty clay loam, 0 to 2 percent slopes, rarely flooded	123.49	87.68	0	66	2w
13512	Cotter silt loam, 0 to 2 percent slopes, rarely flooded	17.36	12.33	0	86	1
TOTALS		140.85(*)	100%	-	68.47	1.88









(*) Total acres may differ in the second decimal compared to the sum of each acreage soil. This is due to a round error because we only show the acres of each soil with two decimal.

Capability Legend

Increased Limitations and Hazards

Decreased Adaptability and Freedom of Choice Users

Land, Capability

								
	1	2	3	4	5	6	7	8
'Wild Life'	•	•	•	•	•	•	•	•
Forestry	•	•	•	•	•	•	•	
Limited	•	•	•	•	•	•	•	
Moderate	•	•	•	•	•	•		
Intense	•	•	•	•	•			
Limited	•	•	•	•				
Moderate	•	•	•					
Intense	•	•						
Very Intense	•							

Grazing Cultivation


(c) climatic limitations (e) susceptibility to erosion

(s) soil limitations within the rooting zone (w) excess of water

L-2400019

Carroll County, Missouri, 692 AC +/-




 Boundary

L-2400019

Carroll County, Missouri, 692 AC +/-



 Boundary

|  Boundary 49.36 ac

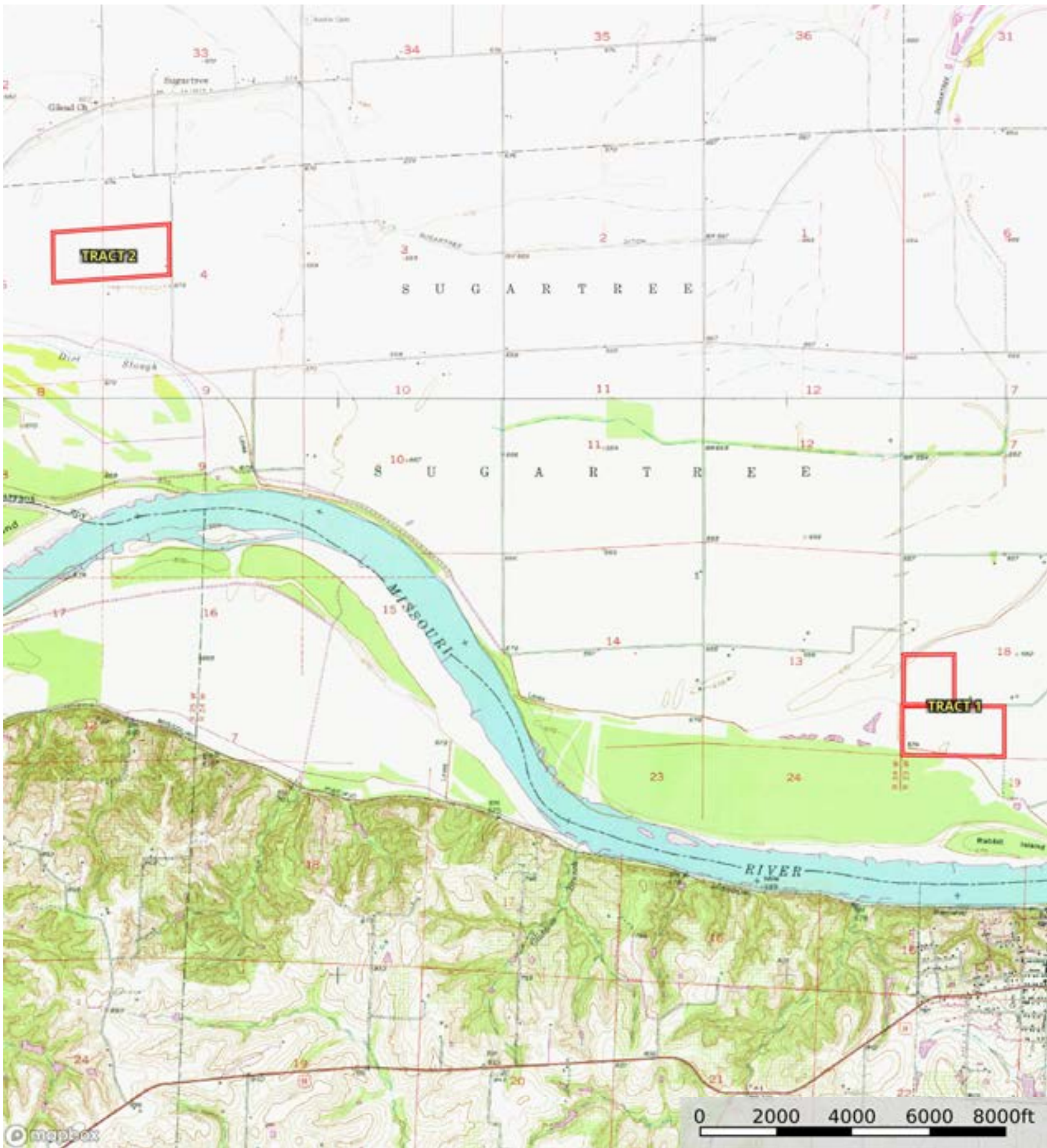
SOIL CODE	SOIL DESCRIPTION	ACRES	%	CPI	NCCPI	CAP
13512	Cotter silt loam, 0 to 2 percent slopes, rarely flooded	18.99	38.47	0	86	1
36031	Nodaway silt loam, 0 to 2 percent slopes, frequently flooded	15.5	31.4	0	63	3w
13507	Bremer silty clay loam, 0 to 2 percent slopes, rarely flooded	14.87	30.13	0	66	2w
TOTALS		49.36(*)	100%	-	72.75	1.93

(*) Total acres may differ in the second decimal compared to the sum of each acreage soil. This is due to a round error because we only show the acres of each soil with two decimal.



L-2400019

Carroll County, Missouri, 692 AC +/-



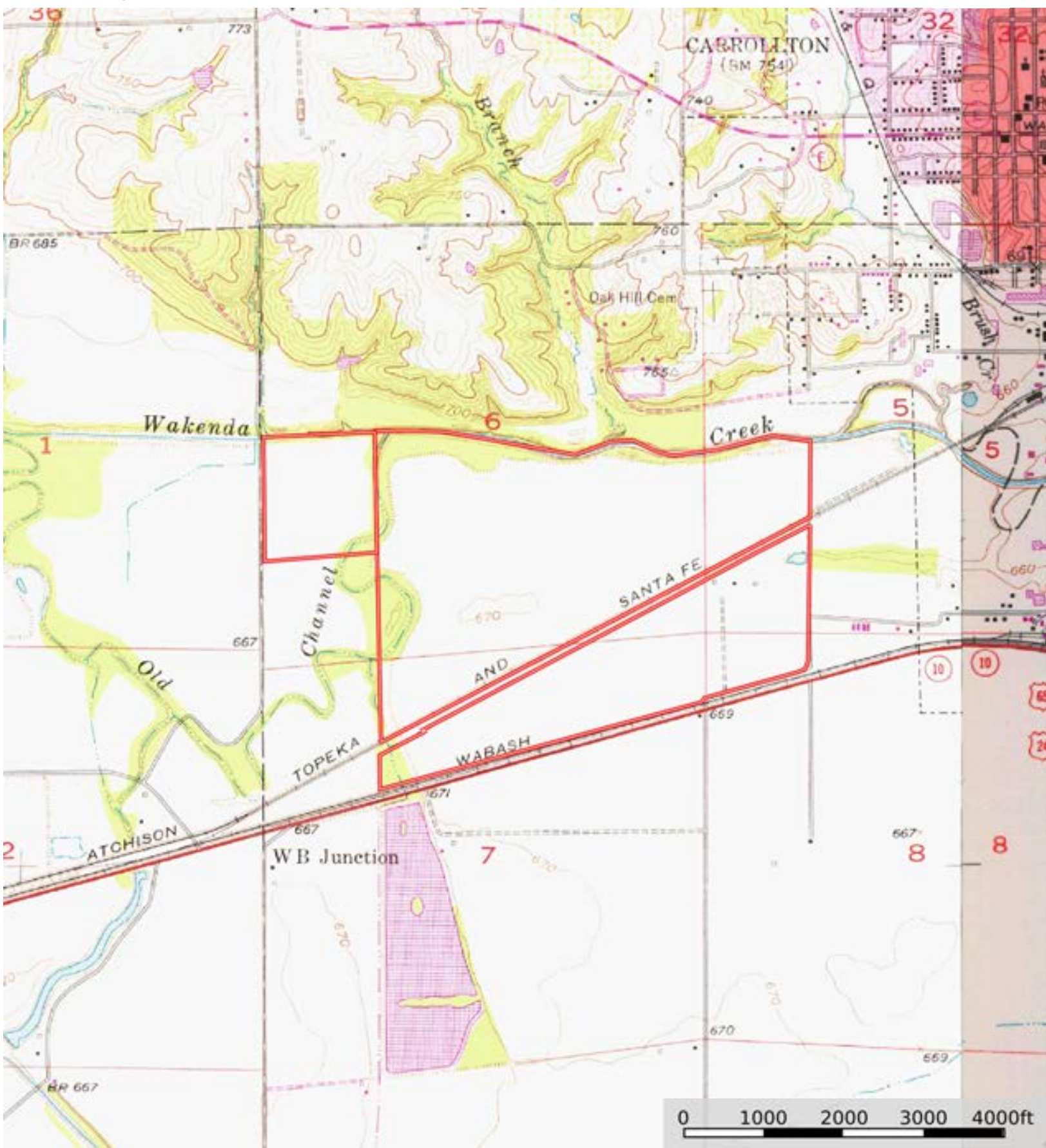
Boundary




The information contained herein was obtained from sources deemed to be reliable. Land id™ Services makes no warranties or guarantees as to the completeness or accuracy thereof.

L-2400019

Carroll County, Missouri, 692 AC +/-



 Boundary



The information contained herein was obtained from sources deemed to be reliable. Land id™ Services makes no warranties or guarantees as to the completeness or accuracy thereof.