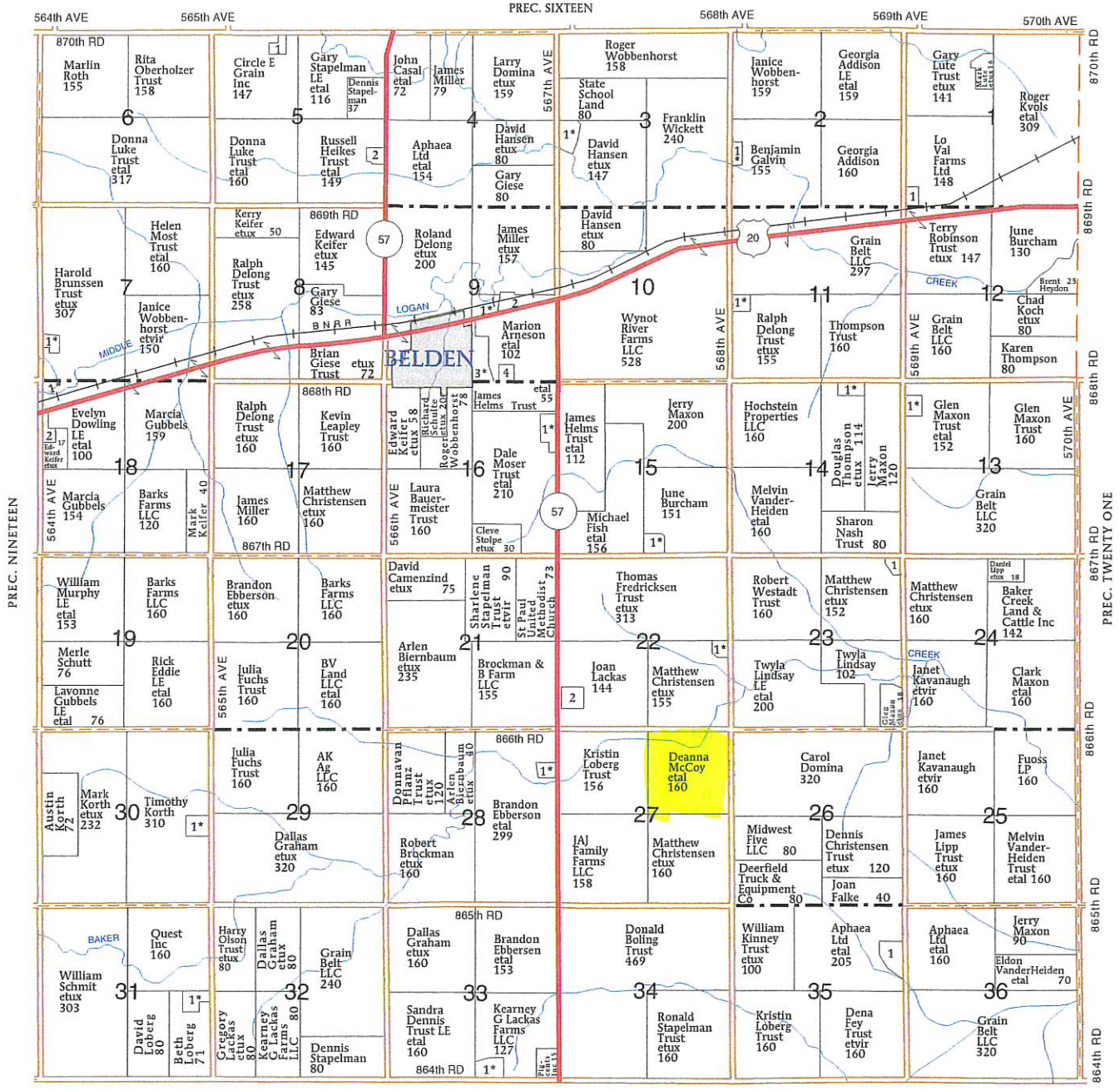


(Landowners)



WAYNE CO.

PRECINCT TWENTY	
<b>SECTION 1</b>	
1 MAY, LEON	5
<b>SECTION 2</b>	
1 JASA, ROBIN ET VIR	5
<b>SECTION 3</b>	
1 HEFNER, MONTY ETUX	13
<b>SECTION 5</b>	
1 EBBERSON, JEFFREY	12
2 EDDIE, BRANT	5

<b>SECTION 7</b>	
1 HARDER, TYLER ETUX	6
<b>SECTION 9</b>	
1 DELONG, ROLLY ETUX	8
2 VILLAGE OF BELDEN	10
3 THORELL, SANDRA ET VIR	16
4 BELDEN CEMETERY ASSN	5
<b>SECTION 11</b>	
1 THOMPSON, SCOTT ETUX	5

<b>SECTION 13</b>	
1 MAXON, GLEN ETUX	8
<b>SECTION 14</b>	
1 THOMPSON, ZACHARY ETUX	6
<b>SECTION 15</b>	
1 BARTELS, CRAIG ETUX	9
<b>SECTION 16</b>	
1 SCHROEDER, GEORGE ETUX	12
<b>SECTION 18</b>	
1 BRUNSSSEN TRUST, HAROLD ETUX	21

<b>SECTION 22</b>	
1 SCHMIT, NICHOLAS ETUX	5
2 LACKAS, KEARNEY	11
<b>SECTION 23</b>	
1 CHRISTENSEN, LISA	8
<b>SECTION 28</b>	
1 EBBERSON, BRANDON ETUX	7
<b>SECTION 30</b>	
1 KORTH, TRAVIS ETUX	10

<b>SECTION 31</b>	
1 RIDENOUR, EDWARD ETUX	9
<b>SECTION 33</b>	
1 LACKAS, GREGORY ETUX	13
<b>SECTION 35</b>	
1 B&D HANSEN FARMS INC	15

