


Wickett Farm


Cedar County, Nebraska, 160 AC +/-



 Boundary

Wickett Farm
Cedar County, Nebraska, 160 AC +/-




 Boundary

Wickett Farm

Cedar County, Nebraska, 160 AC +/-



 Boundary

|  Boundary 160.98 ac

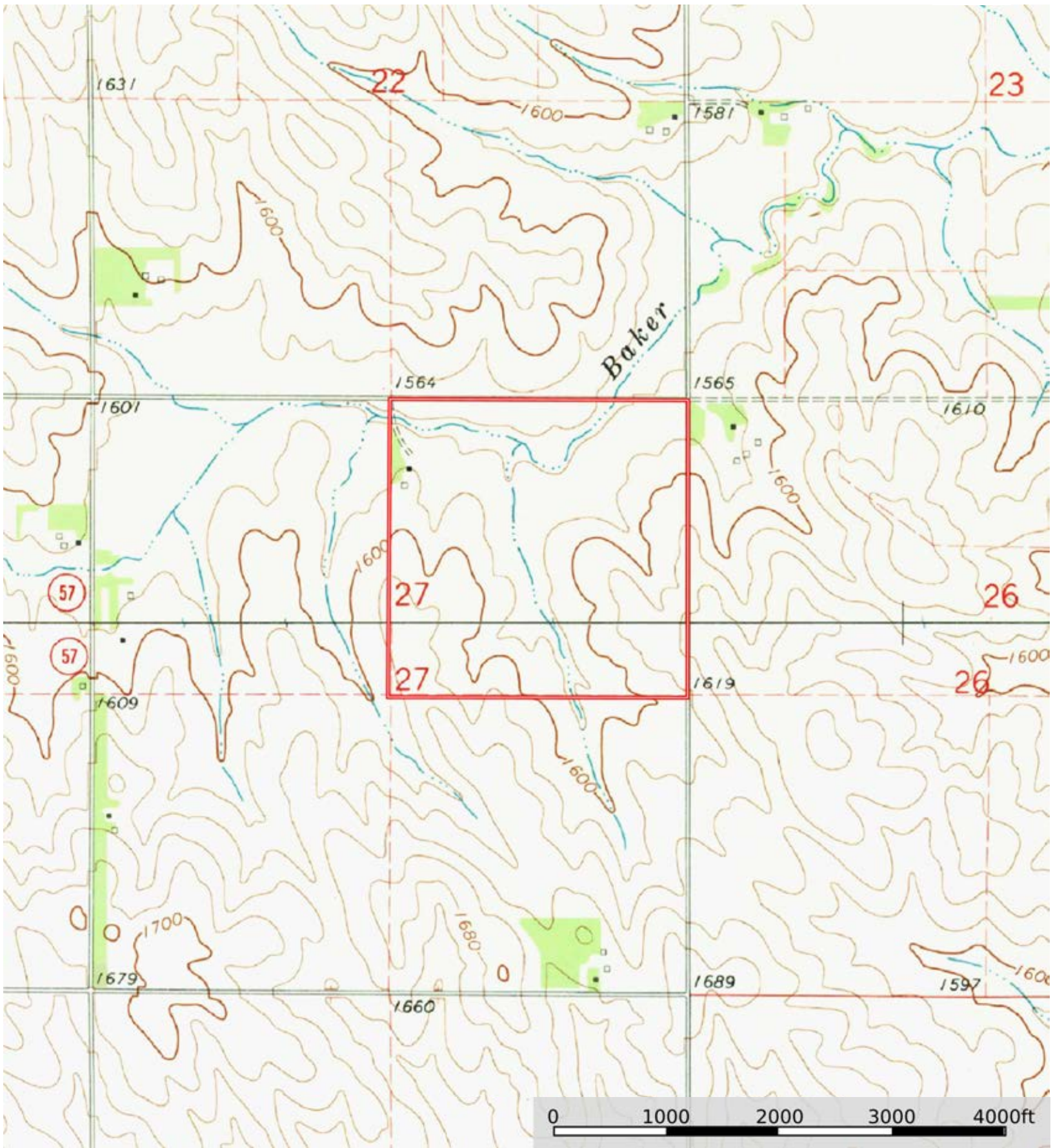
SOIL CODE	SOIL DESCRIPTION	ACRES	%	CPI	NCCPI	CAP
6756	Nora silt loam, 6 to 11 percent slopes, eroded	58.48	36.33	52	68	3e
6603	Alcester silty clay loam, 2 to 6 percent slopes	31.67	19.67	91	76	2e
3561	Hobbs silt loam, 0 to 2 percent slopes, occasionally flooded, cool	29.47	18.31	0	79	2w
6694	Crofton-Nora complex, 6 to 11 percent slopes, eroded	22.71	14.11	47	66	4e
6814	Moody silty clay loam, 6 to 11 percent slopes, eroded	11.73	7.29	0	63	3e
6812	Moody silty clay loam, 2 to 6 percent slopes, eroded	6.92	4.3	0	65	2e
TOTALS		160.98(*)	100%	43.42	70.81	2.72


(*) Total acres may differ in the second decimal compared to the sum of each acreage soil. This is due to a round error because we only show the acres of each soil with two decimal.



Wickett Farm

Cedar County, Nebraska, 160 AC +/-



 Boundary