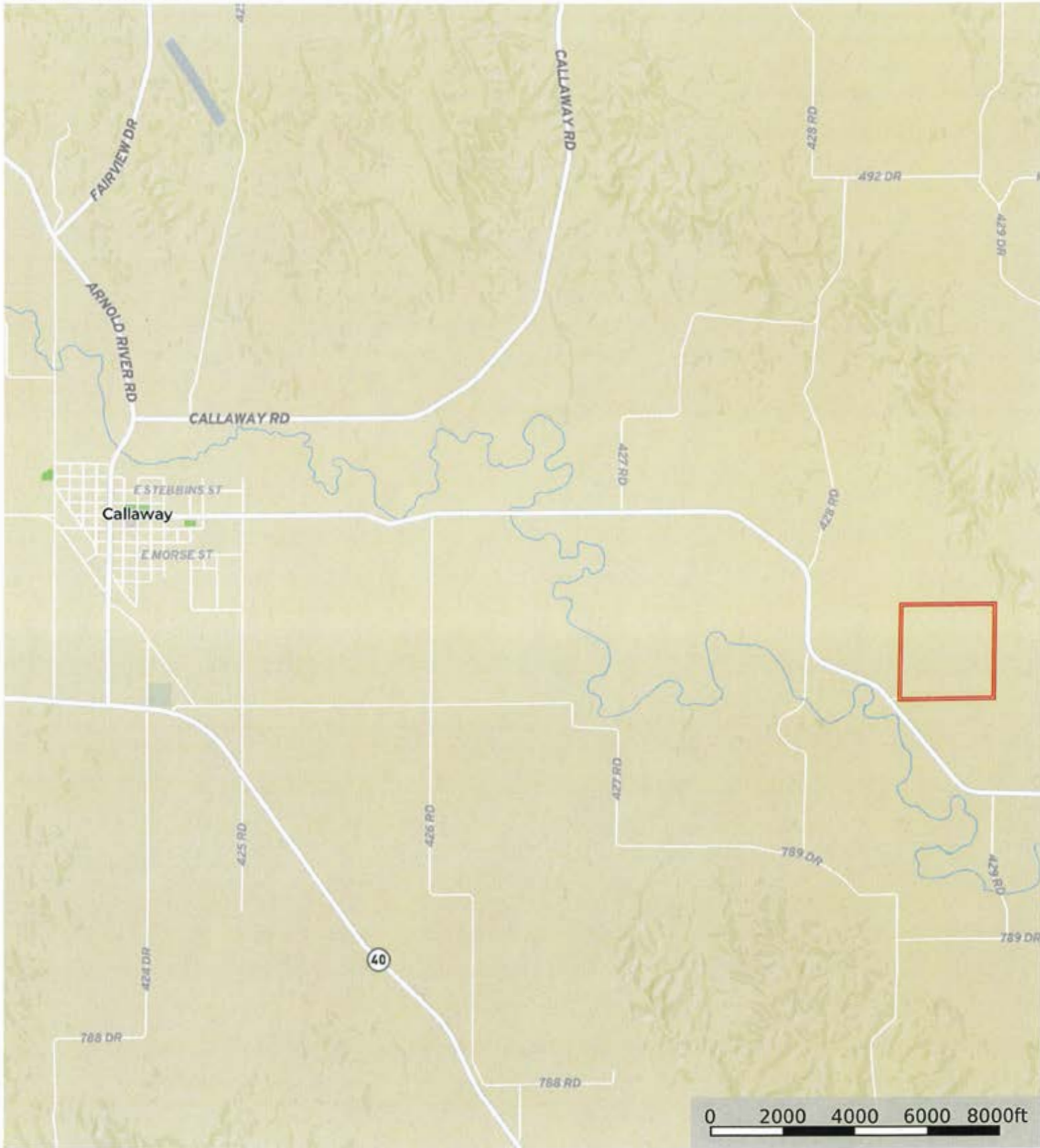



L-2400022

Custer County, Nebraska, 159.36 AC +/-



 Boundary

L-2400022

Custer County, Nebraska, 159.36 AC +/-



 Boundary

0 200 400 600 800ft

L-2400022

Custer County, Nebraska, 159.36 AC +/-



 Boundary

Boundary 157.57 ac

SOIL CODE	SOIL DESCRIPTION	ACRES	%	CPI	NCCPI	CAP
9004	Anselmo fine sandy loam, 3 to 6 percent slopes	52.29	33.19	0	39	2e
2543	Coly silt loam, 11 to 17 percent slopes, eroded, cool	37.21	23.61	0	53	6e
8872	Hord silt loam, 3 to 6 percent slopes	32.61	20.7	0	61	3e
8869	Hord silt loam, 0 to 1 percent slopes	10.77	6.84	0	75	2c
9014	Anselmo very fine sandy loam, 0 to 1 percent slopes	8.96	5.69	0	55	2c
2831	Uly-Coly silt loams, 17 to 30 percent slopes, eroded	6.93	4.4	0	49	6e
2821	Uly silt loam, 6 to 11 percent slopes, eroded	6.4	4.06	0	63	4e
8815	Cozad silt loam, 0 to 1 percent slopes	1.83	1.16	0	70	2c
4138	Holdrege silt loam, 7 to 11 percent slopes	0.57	0.36	0	74	4e
TOTALS		157.57(*)	100%	-	52.13	3.42

(\*) Total acres may differ in the second decimal compared to the sum of each acreage soil. This is due to a round error because we only show the acres of each soil with two decimal.

### Capability Legend

Increased Limitations and Hazards

Decreased Adaptability and Freedom of Choice Users

Land, Capability

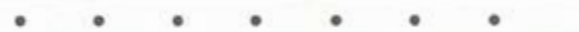


1 2 3 4 5 6 7 8

'Wild Life'



Forestry



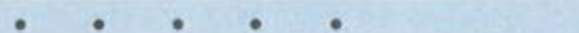
Limited



Moderate



Intense



Limited



Moderate



Intense



Very Intense



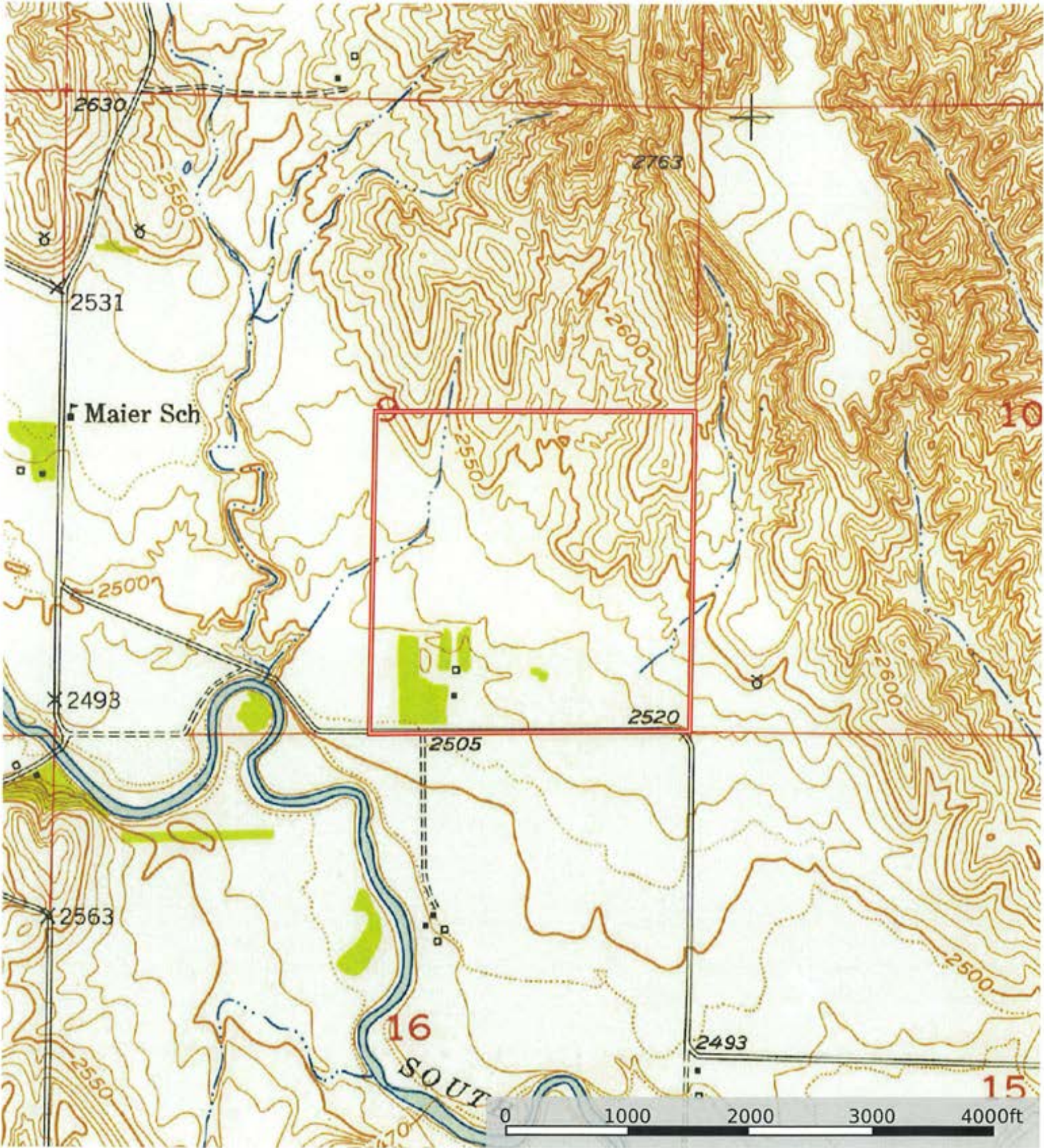
### Grazing Cultivation

(c) climatic limitations (e) susceptibility to erosion

(s) soil limitations within the rooting zone (w) excess of water

L-2400022

Custer County, Nebraska, 159.36 AC +/-



Boundary