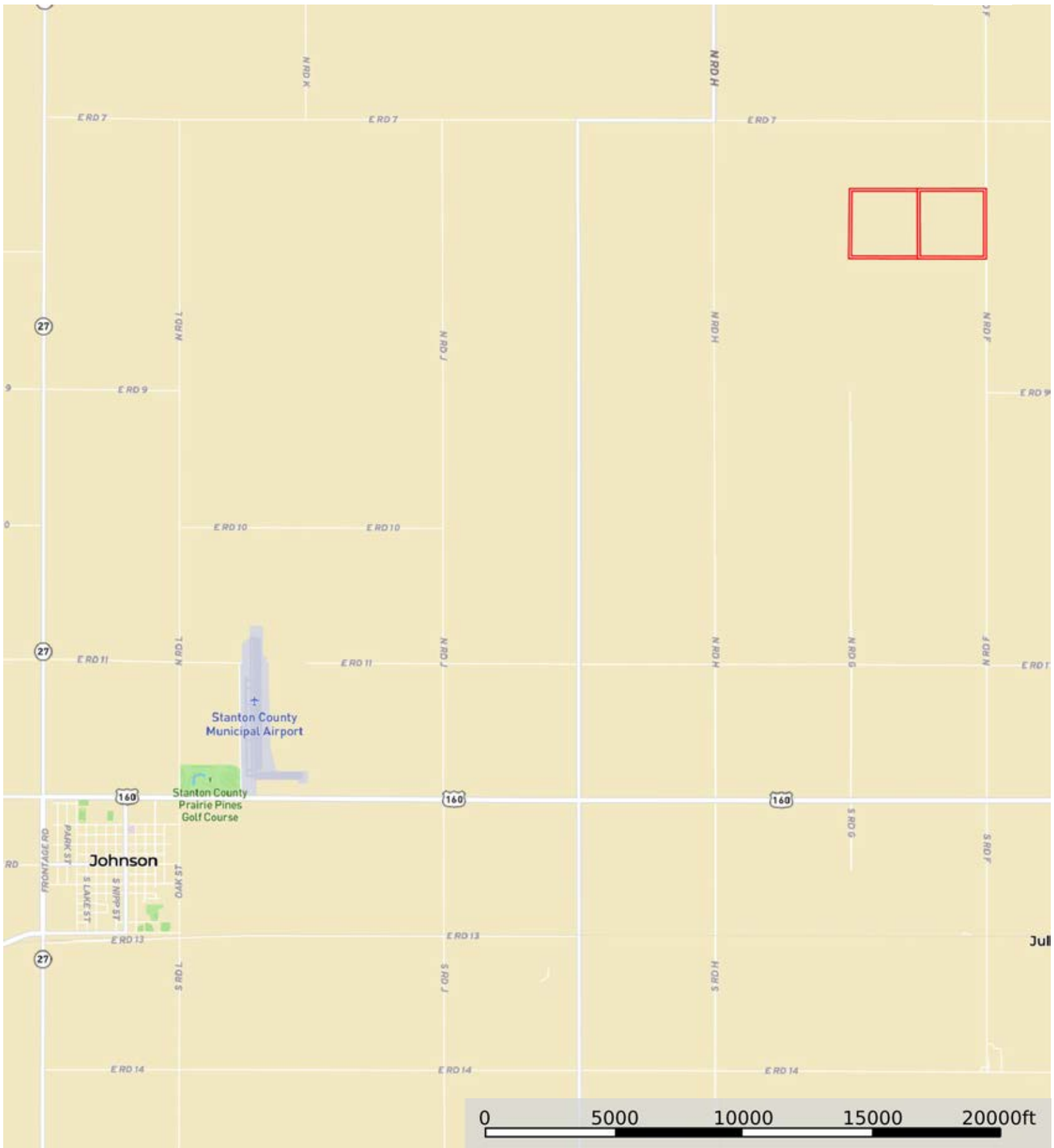



L-2400026

Stanton County, Kansas, 320 AC +/-



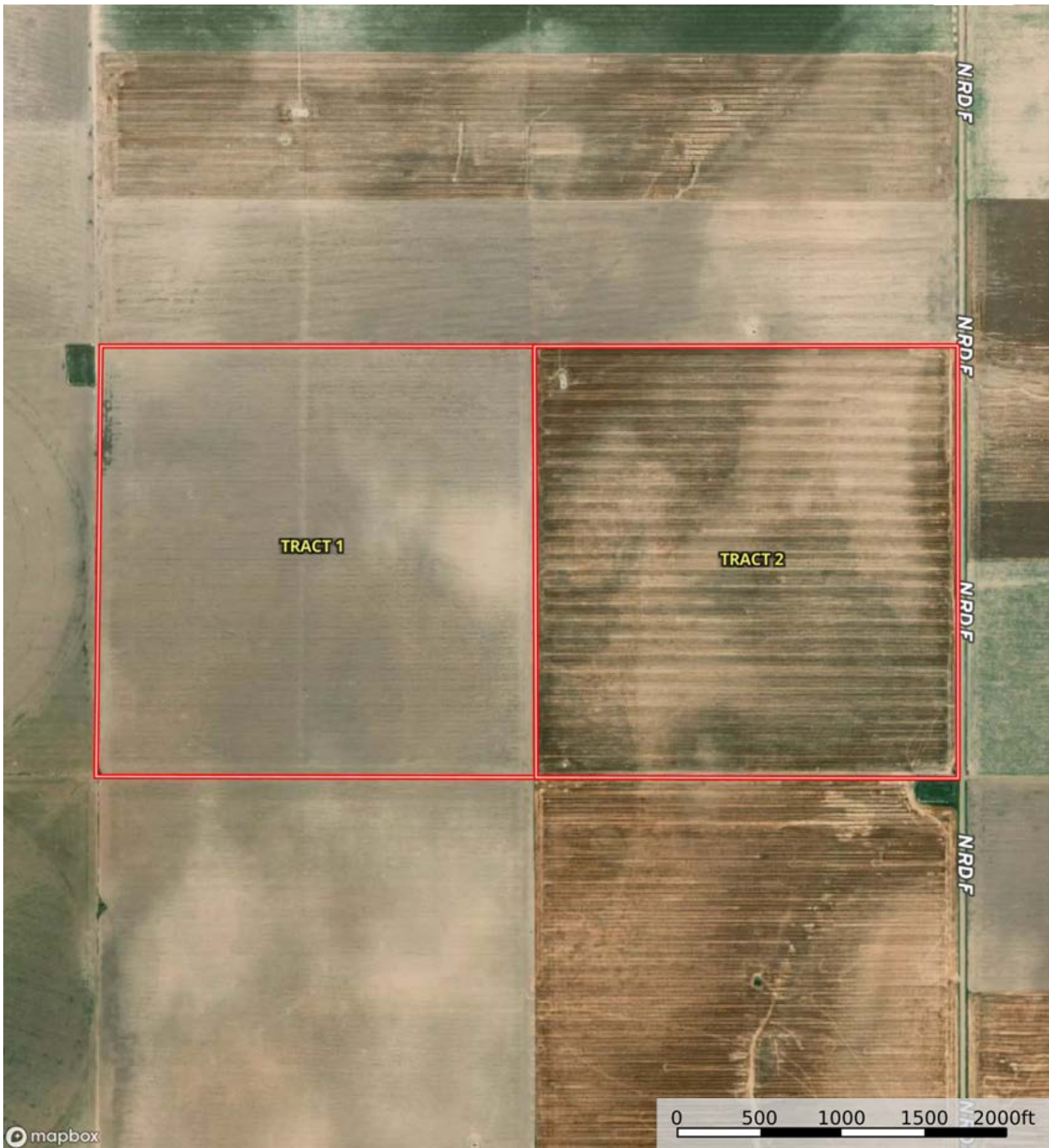
 Boundary



The information contained herein was obtained from sources deemed to be reliable. Land id™ Services makes no warranties or guarantees as to the completeness or accuracy thereof.

L-2400026

Stanton County, Kansas, 320 AC +/-



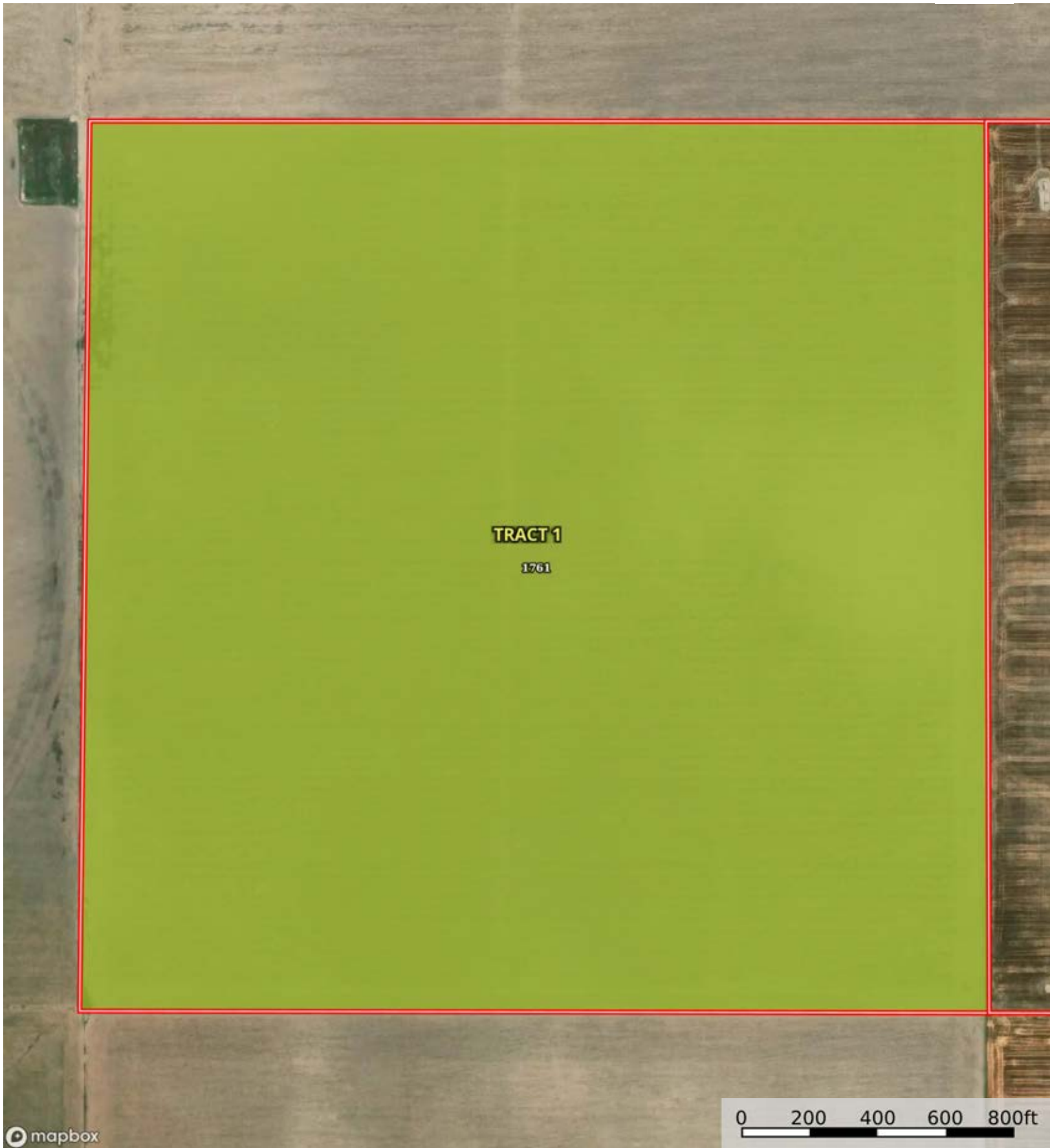
Boundary



The information contained herein was obtained from sources deemed to be reliable. Land id™ Services makes no warranties or guarantees as to the completeness or accuracy thereof.

L-2400026

Stanton County, Kansas, 320 AC +/-



TRACT 1

1761

mapbox

0 200 400 600 800ft

Boundary



The information contained herein was obtained from sources deemed to be reliable. Land id™ Services makes no warranties or guarantees as to the completeness or accuracy thereof.

|  Boundary 160.81 ac

SOIL CODE	SOIL DESCRIPTION	ACRES	%	CPI	NCCPI	CAP
1761	Richfield silt loam, 0 to 1 percent slopes	160.8 1	100	0	66	3c
TOTALS		160.8 1(*)	100%	-	66.0	3

(*) Total acres may differ in the second decimal compared to the sum of each acreage soil. This is due to a round error because we only show the acres of each soil with two decimal.



L-2400026

Stanton County, Kansas, 320 AC +/-



mapbox

Boundary

|  Boundary 155.93 ac

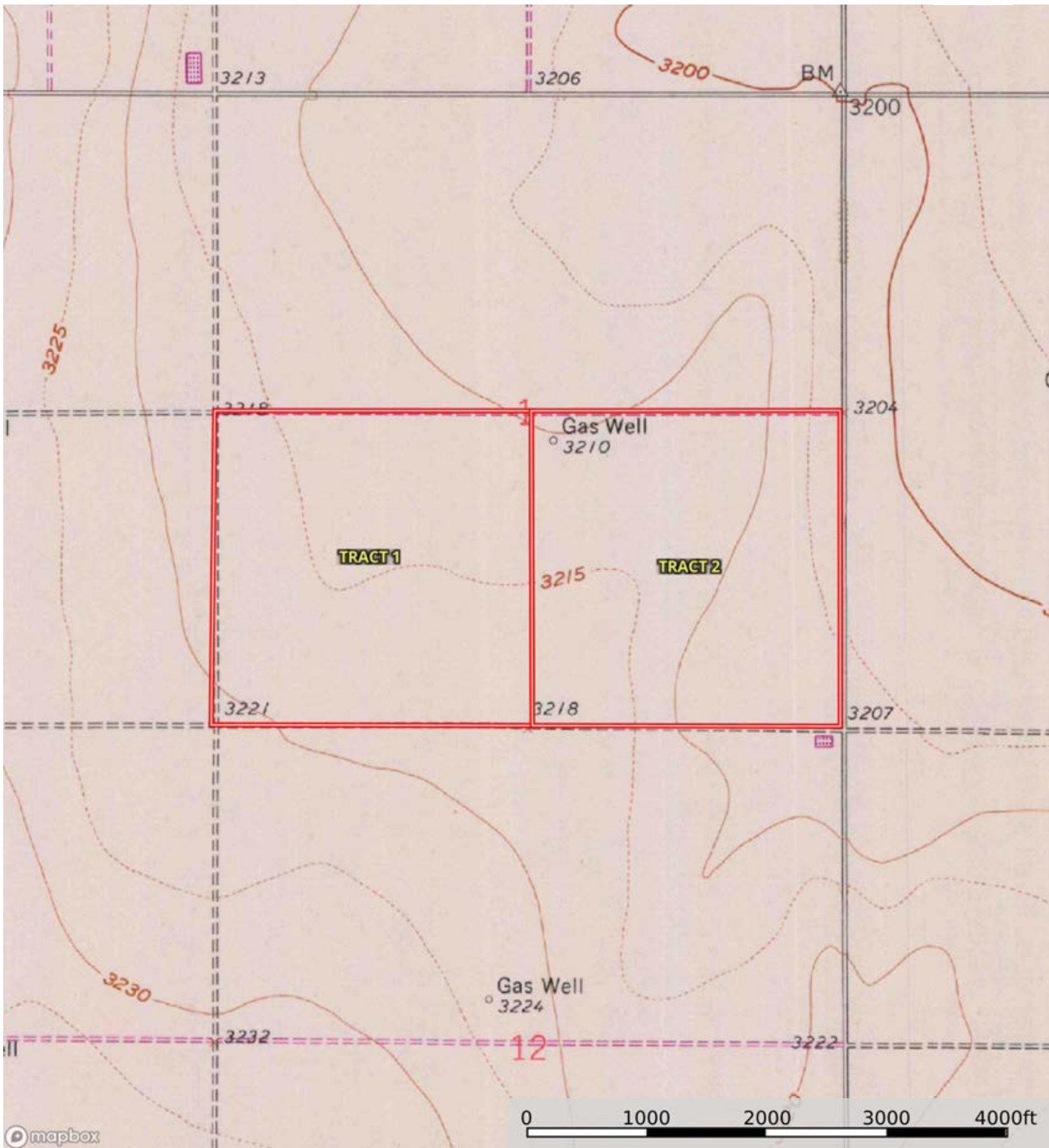
SOIL CODE	SOIL DESCRIPTION	ACRES	%	CPI	NCCPI	CAP
1761	Richfield silt loam, 0 to 1 percent slopes	73.59	47.19	0	66	3c
1856	Ulysses silt loam, 0 to 1 percent slopes	68.27	43.78	0	64	2c
1857	Ulysses silt loam, 1 to 3 percent slopes	14.07	9.02	0	64	3e
TOTALS		155.93(*)	100%	-	64.94	2.56


(*) Total acres may differ in the second decimal compared to the sum of each acreage soil. This is due to a round error because we only show the acres of each soil with two decimal.



L-2400026

Stanton County, Kansas, 320 AC +/-



 Boundary